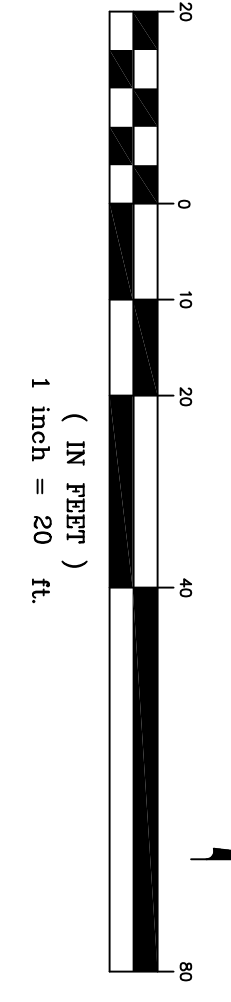
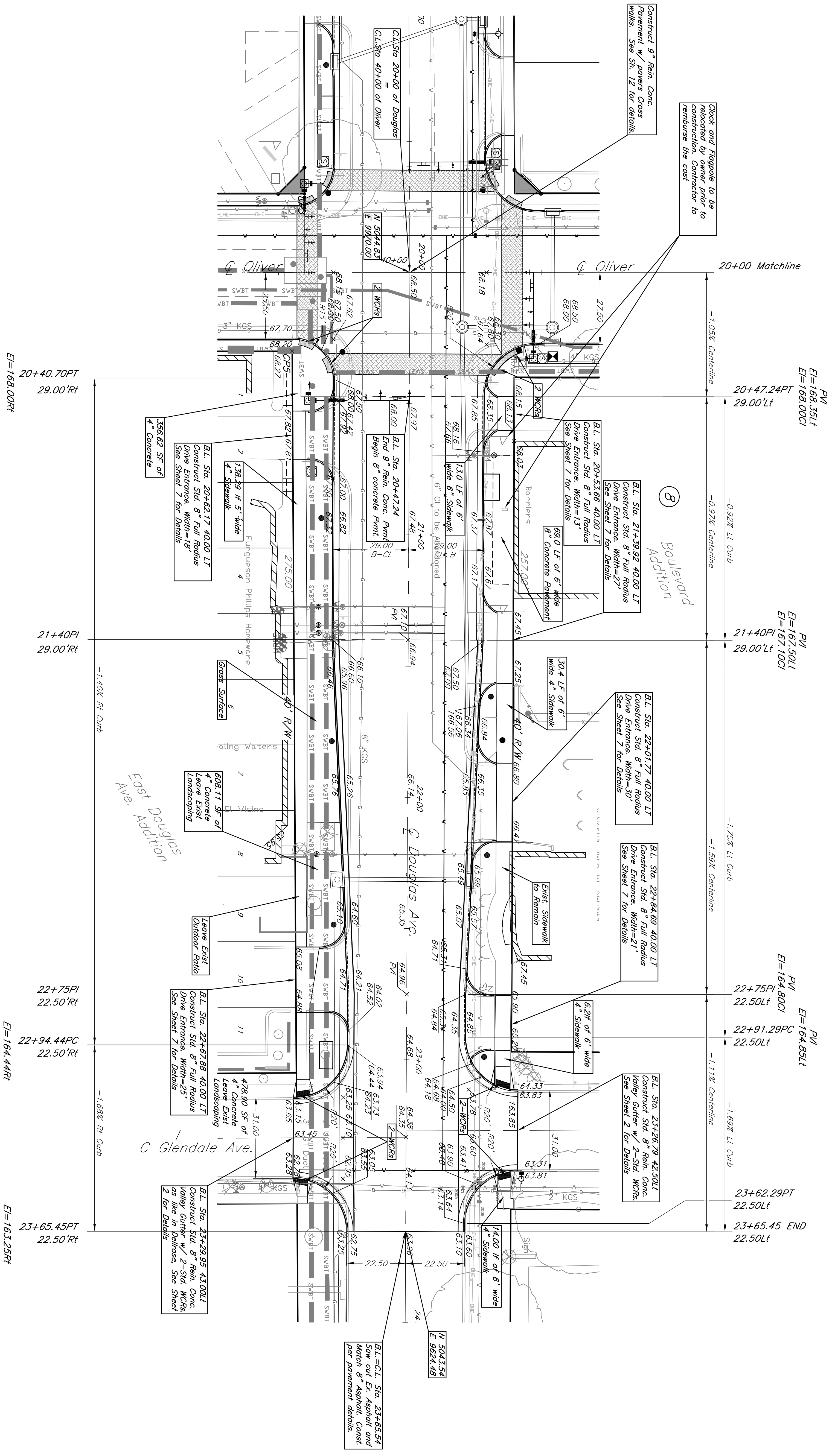



#	Baseline	Offset	Description
CP1	15+45.37	40.04RT	South side of Douglas, 180' West of Dellrose
CP2	17+69.81	40.00RT	SE corner of Douglas & Dellrose
CP3	17+50.07	39.86LT	IP in N. Drieway, East Douglas & Dellrose
CP4	19+69.90	40.00RT	Ex. SW corner of Douglas & Oliver
CP5	39+59.89	29.95LT	SE corner of Douglas & Oliver
CP6	24+87.43	40.03RT	South side of Douglas, 158' East of Glendale
CP7	36+54.71	29.96LT	North corner of Oakland & Oliver
CP8	41+82.29	40.07RT	North corner of Alley on Oliver
CP9	42+82.44	40.07RT	IP east side of Oliver, 282' N of Douglas
CP10	44+17.92	29.93LT	IP west side of Oliver, 418' N of Douglas





**Kemiller**  
engineering

Oliver and Douglas  
Paving Plan Sta. 20+00 to 23+65  
Wichita, KS

DESIGN	DATE	SHEET
FB	7/5/05	9
DRAWN	REVISION	OF
JO	2/15/08	49

PROJECT NUMBER  
472-83155

516 S. Wornell,  
Wichita, KS 67202

316/284-0242