

SHORTENING OF MEDIAN

# Founders Circle

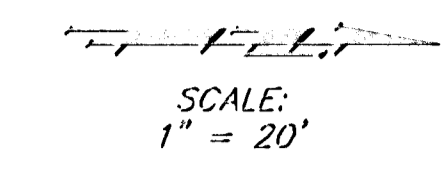
The Collective, Block 1, Lot 1

Private Project Number: 160 PPP (807879)

CITY OF WICHITA, KANSAS

Jim Armour, P.E. Acting City Engineer

October 2004



**Bench Marks:**

- Site Bench Mark.  
"X" Chiseled on Top of Concrete approximately 2' Northeast of the Northeast corner of Lot 1, Block 1, The Collective, an Addition to Wichita, Sedgwick County, Kansas.  
Elev. = 196.01 (City Datum)
- Greenwich and 17th Street North.  
City of Wichita Bench Mark.  
West side of Greenwich in railroad signal base.  
Elev. = 183.19 (City Datum)

**Index**

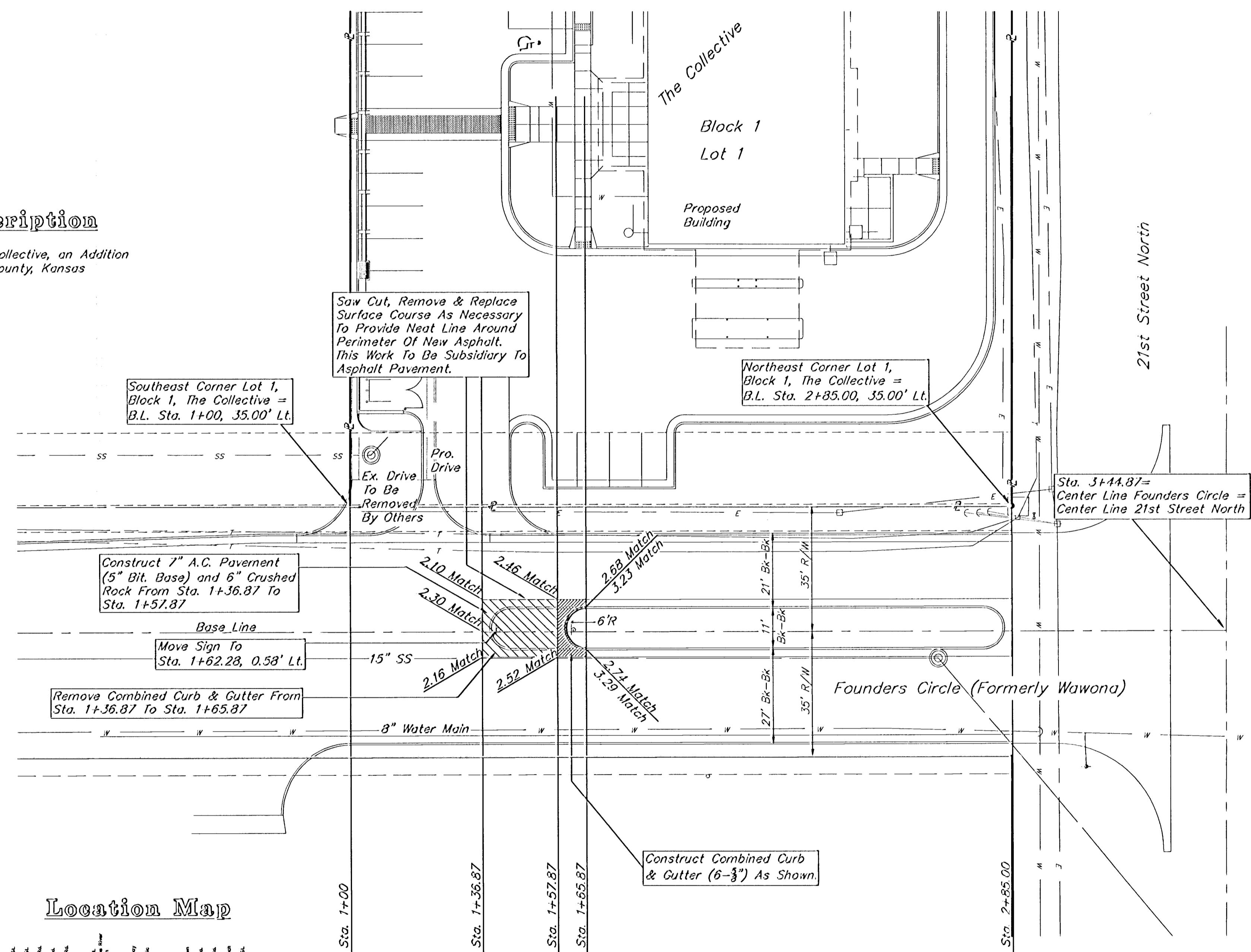
- |                     |   |
|---------------------|---|
| Cover/Plan Sheet    | 1 |
| BMP Erosion Details | 2 |
| Copy Of Plat        | 3 |

**Legal Description**

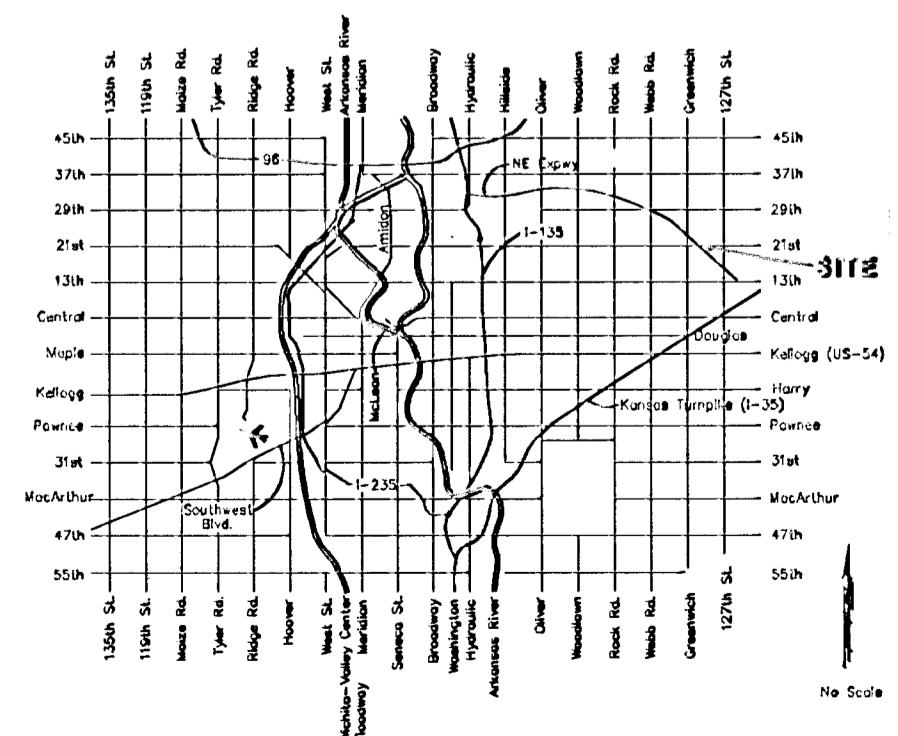
Lots 1, Block 1, The Collective, an Addition to Wichita, Sedgwick County, Kansas

**General Notes**

- Contractor will be required to provide notice to utility companies a minimum of forty-eight (48) hours prior to any excavation, as follows:  
Kansas One-Call 687-2470  
The Contractor must notify the following in case of an emergency:  
Cox Communications 262-4270  
Kansas Gas Service Company 1-888-482-4950  
Westar Energy (Electric) 383-8650  
Aquila Energy (Gas) 1-800-303-0357  
Southwestern Bell Telephone Co. 1-800-286-8313  
City of Wichita Water Dept. (Water) 262-6000  
City of Wichita Sewer Maint. (SS) 262-6000  
City of Wichita Storm Sewer Maint. 263-4090  
City of Wichita Traffic Maint. 263-4034
- Utility service lines, poles, valve boxes, meters, at cetera are to be adjusted as necessary by others prior to construction unless the plans specifically call for their adjustment by the Contractor or unless the plans specifically identify a utility to be adjusted by its owner during construction. Existing utilities and their location, as shown on the plans represent the best information obtainable for design and shall be field verified. The contractor will be required to work around existing utilities within the right-of-way which do not conflict with proposed construction.
- Barriers and detour signage shall be in accordance with the Manual On Uniform Traffic Control Devices.
- Rubble from the removal of miscellaneous structures and excess excavation which is to be wasted shall be disposed of on sites to be provided by the Contractor. These sites shall be approved by the Engineer as to suitability, appearance and site location. Locations that, in the opinion of the Engineer, will leave an unsightly appearance will not be approved. All disposal sites must be approved by the Kansas Department of Health and Environment. Material either stockpiled or disposed of in a flood plain would require a Kansas State Board of Agriculture permit. Any material dumped in waters of the United States or wetlands is subject to U.S. Corps. of Engineers permitting regulations. Any material buried or stockpiled beyond approved construction limits would require additional archeological investigations unless buried in a previously approved borrow location.
- All pavement, curb & gutter shall be installed in accordance with the most recent edition of City of Wichita, Kansas Standard Specifications for the Construction of City Projects.
- Contractor shall not start work on the project until the project inspector is assigned to the project and is present on the site. Contractor shall not start on the project until all necessary bonds and permits have been obtained. Bonds may include but are not limited to Statutory, Performance & Maintenance for areas in public right-of-way and easement. For projects within the City of Wichita contact Tom Mason (263-4574). Any work done without inspection will be required to be uncovered for inspection.



**Location Map**



APPROVED AS NOTED  
BY CITY ENGINEER OF WICHITA

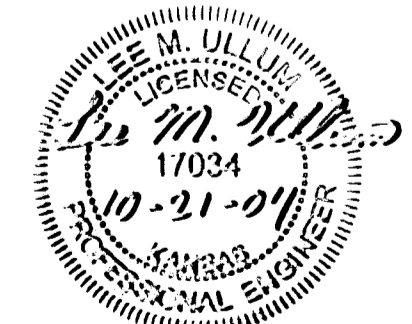
Pavement DRH 10/21/04

NOTE TO CONTRACTORS

Installation, inspection and testing for this project is to be provided by a Licensed Consulting Engineering Firm under contract with the Owner/Developer. Said inspection to be in accordance with the City of Wichita standard construction engineering practices and certified by a Licensed Professional Engineer. No work shall be performed in dedicated easements or public right-of-way by the Contractor without such inspection nor shall any work be commenced without written authorization by the City Engineer. All Construction and Materials shall comply with the City of Wichita Specifications and Standards (on file and available in the City Engineer's Office).

Contractor Shall Follow All Applicable Best Management Practices (BMP) For Erosion Control.

Contractor To Use Extreme Caution When Excavating Near Utility Lines. Contractor To Hand Dig To Expose All Utility Lines Prior To Construction. Verify Depth To Determine Conflict If Any.



Shortening Of Median Founders Circle (Formerly Wawona) The Collective, Block 1, Lot 1	
Baughman Company, P.A. 315 Ellis St., Wichita, KS 67211 F 316.262.7271 F 316.262.0449 ENGINEERING   SURVEYING   PLANNING   LANDSCAPE ARCHITECTURE	
PROJECT NUMBER 160 PPP (807879)	DESIGN LU APPROVED LU SCALE Noted SHEET
REVISIONS:	DRAWN LU DATE 10/04 1 OF 3
Security Savings Bank Median 0410 B071	