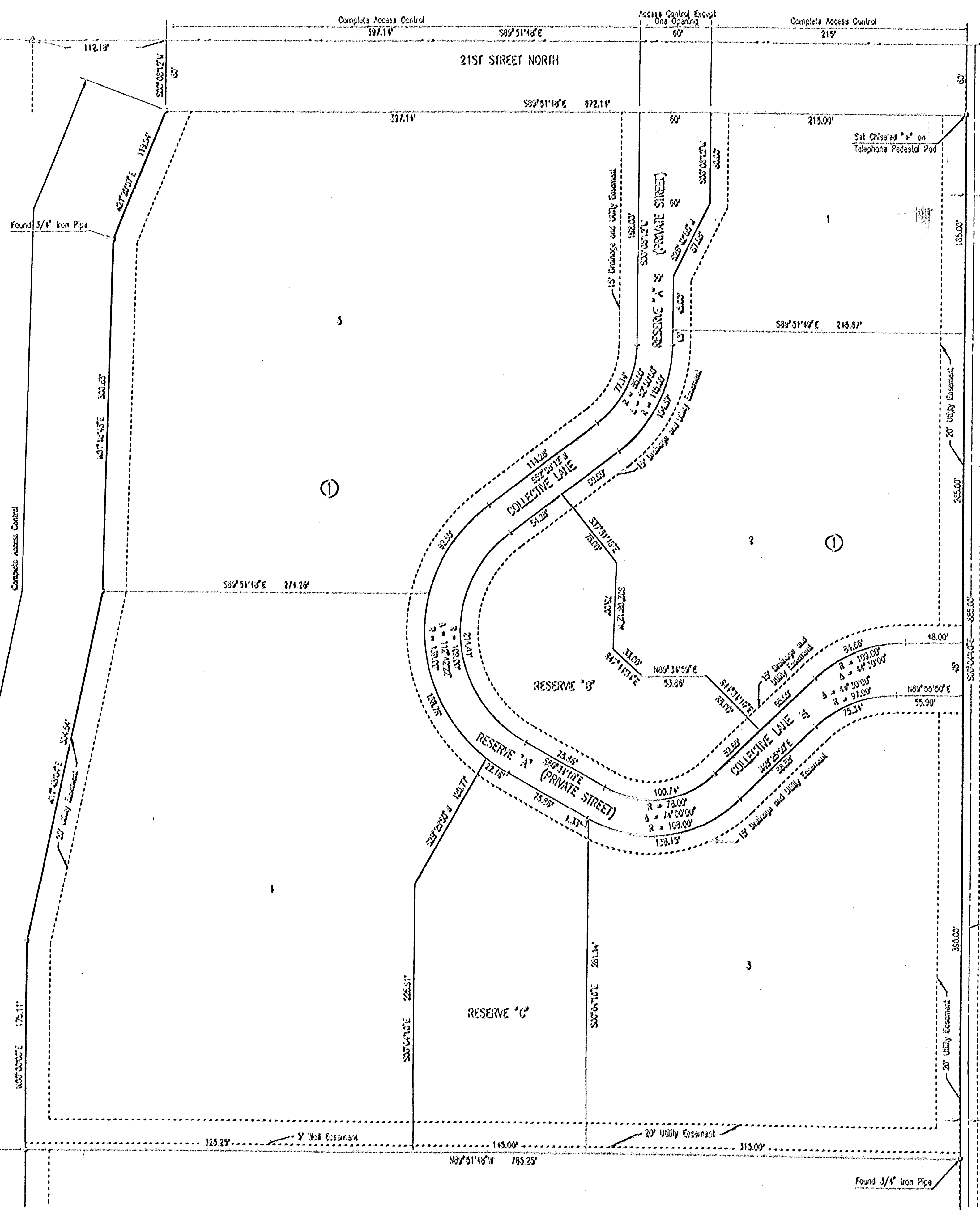


NW Corner, NE 1/4, Sec. 10, T24S, R02E of the 8th P.M. Found 3/4" Bar with Ferris Cap

20.00 cc

K-55 NORTHEAST EXPRESSWAY CONDEMNATION CASE #870-1434



# THE COLLECTIVE

## AN ADDITION TO WICHITA, SEDGWICK COUNTY, KANSAS

SCALE: 1" = 50'

3/4" IRON PIPE 1/2" CAP UNLESS OTHERWISE NOTED

B.M. - STEPPED SPIKE IN NORTH SIDE OF POWER POLE ON SOUTHWEST CORNER OF 21ST STREET NORTH AND WANONA, 77' EAST AND 49' SOUTH OF NORTH 1/4 CORNER, SECTION 10, T24S, R02E.

ELEV. = 1384.72 N.G.V.D.  
ELEV. = 1274.32 (CITY DATUM)

STATE OF KANSAS }  
COUNTY OF SEDGWICK } SS

STATE OF KANSAS }  
COUNTY OF SEDGWICK } SS

WE, PROFESSIONAL ENGINEERING CONSULTANTS, P.A., ENGINEERS AND SURVEYORS IN FORESHO STATE AND COUNTY DO HEREBY CERTIFY THAT ON THIS 9<sup>th</sup> DAY OF SEPTEMBER, 2001, WE HAVE SURVEYED AND PLATTED THE COLLECTIVE, AN ADDITION TO WICHITA, SEDGWICK COUNTY, KANSAS, INTO LOTS, BLOCK AND RESERVES, THE SAME BEING DESCRIBED AS FOLLOWS:

THIS INSTRUMENT WAS ACKNOWLEDGED BEFORE ME ON THIS 9<sup>th</sup> DAY OF SEPTEMBER, 2001, BY J.V. JOHNSON, PRESIDENT OF JELOO, L.L.C.

LOTS 1, 2 AND 3, BLOCK 1, LANZBATH ADDITION TO SEDGWICK COUNTY, KANSAS, EXCEPT THOSE PORTIONS OF SAID LOTS CONDEMNATED FOR HIGHWAY IN DISTRICT COURT CONDEMNATION CASE #870-1434.

NOTARY PUBLIC  
*Sary L. Wiley*  
MY APPOINTMENT EXPIRES: 1/13/05

ALL PORTIONS OF LANZBATH ADDITION TO SEDGWICK COUNTY, KANSAS, WITHIN THE ABOVE DESCRIBED TRACT OF LAND ARE HEREBY VACATED AND REPEALED BY VIRTUE OF K.S.A. 12-312(b) JUDICIAL.

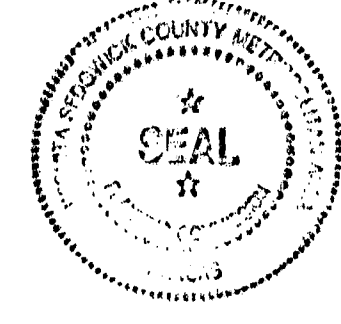
THIS PLAN OF THE COLLECTIVE HAS BEEN SUBMITTED TO AND APPROVED BY THE WICHITA-SEDGWICK COUNTY METROPOLITAN AREA PLANNING COMMISSION, WICHITA, KANSAS.



JAMES R. BECKETT, R.L.S. NO. 832  
PROFESSIONAL ENGINEERING CONSULTANTS, P.A.

DATED THIS 9<sup>th</sup> DAY OF SEPTEMBER, 2001.

WICHITA-SEDGWICK COUNTY METROPOLITAN AREA PLANNING COMMISSION  
*John P. ...* ACTING CHAIRMAN  
*Marvin S. ...* SECRETARY  
MARVIN S. KRUIT



KNOW ALL MEN BY THESE PRESENTS THAT WE, THE UNDERSIGNED PROPERTY OWNERS OF THE LAND AS ABOVE SAID FORTH IN THE SURVEYORS CERTIFICATE, HAVE CAUSED THE LAND TO BE SURVEYED AND PLATTED INTO LOTS, BLOCK AND RESERVES, THE SAME TO BE KNOWN AS THE COLLECTIVE, AN ADDITION TO WICHITA, SEDGWICK COUNTY, KANSAS.

REVIEWED IN ACCORDANCE WITH K.S.A. 58-2003 ON THIS 20<sup>th</sup> DAY OF NOVEMBER, 2001.

EASEMENTS FOR THE CONSTRUCTION AND MAINTENANCE OF PUBLIC UTILITIES AND DRAINAGE ARE HEREBY GRANTED.

*Tricia L. Rosello*  
TRICIA L. ROSELLO, CS #1243  
DEPUTY COUNTY SURVEYOR  
SEDGWICK COUNTY KANSAS

THE 5 FOOT WALL EASEMENT ALONG THE SOUTH LINE OF BLOCK 1 IS HEREBY PLATTED FOR THE CONSTRUCTION AND MAINTENANCE OF A PRIVATE WALL. UTILITIES AND DRAINAGE MAY CROSS THE WALL EASEMENT.

THIS PLAN IS APPROVED AND ALL DEDICATIONS SHOWN HEREON, IF ANY, ARE ACCEPTED BY THE CITY COUNCIL OF THE CITY OF WICHITA, KANSAS, THIS 11<sup>th</sup> DAY OF DECEMBER, 2001.

ALL ADJUTERS RIGHT OF ACCESS TO AND FROM 21ST STREET NORTH AND K-55 NORTHEAST EXPRESSWAY OVER AND ACROSS THE NORTH AND WEST LINE OF BLOCK 1 IS HEREBY GRANTED TO THE CITY OF WICHITA, PROVIDED HOWEVER THAT BLOCK 1 SHALL HAVE ACCESS TO 21ST STREET NORTH AT ONE LOCATION AS SHOWN.

AT THE DIRECTION OF THE CITY COUNCIL  
*Pat Burnett* CITY MANAGER  
*Pat Burnett* CITY CLERK  
PAT BURNETT

RESERVE "A" IS HEREBY PLATTED FOR PRIVATE STREET, DRAINAGE, LANDSCAPING, AND UTILITIES. THE PRIVATE STREET WITHIN RESERVE "A" IS TO PROVIDE ACCESS AND EGRESS TO 21ST STREET NORTH AND WANONA TO LOTS 1 THROUGH 3, BLOCK 1, THE COLLECTIVE. RESERVES "B" AND "C" ARE HEREBY PLATTED FOR PEDESTRIAN IMPROVEMENTS, DRAINAGE, LANDSCAPING AND UTILITIES CONFINED TO EASEMENTS. RESERVES "A", "B" AND "C" SHALL BE OWNED AND MAINTAINED BY AN OWNERS ASSOCIATION TO BE FORMED WITHIN THE COLLECTIVE.

FOR ADDITIONAL INFORMATION AND BUILDING SETBACK LINES SEE OUP 2001-00013 D.P.-258 ON FILE AT THE WICHITA-SEDGWICK COUNTY METROPOLITAN AREA PLANNING DEPARTMENT, WICHITA, KANSAS.

A DRAINAGE PLAN HAS BEEN APPROVED FOR THIS PLAN. ALL DRAINAGE EASEMENTS AND RIGHTS-OF-WAY SHALL REMAIN AT ESTABLISHED GRADES AND UNOBTSTRUCTED TO ALLOW FOR THE CONVEYANCE OF STORM WATER, UNLESS MODIFIED WITH THE APPROVAL OF THE CITY ENGINEER.

MINIMUM FINISH ELEVATIONS (LOWEST OPENING) SHALL BE AS FOLLOWS:

BLOCK	CITY DATUM	NGVD
BLOCK 1		
LOT 2	188.1	1373.5
LOTS 3 & 4	182.0	1367.4
LOT 5	191.1	1376.4

OWNERS:  
RALPH A. LANZBATH REVOCABLE TRUST  
*Ralph A. Lanzbath, Co-Trustee*  
RALPH A. LANZBATH, CO-TRUSTEE  
*Mary K. Lanzbath, Co-Trustee*  
MARY K. LANZBATH, CO-TRUSTEE

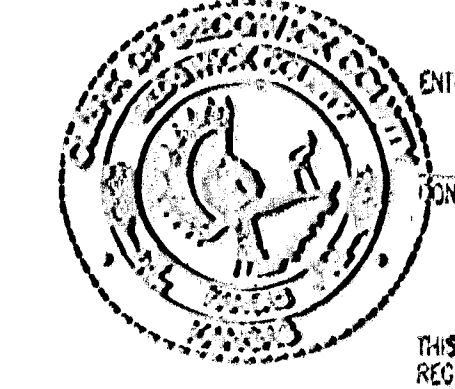
JELOO, L.L.C.

*J.V. Johnson*  
J.V. JOHNSON, PRESIDENT

STATE OF KANSAS }  
COUNTY OF SEDGWICK } SS

THIS INSTRUMENT WAS ACKNOWLEDGED BEFORE ME ON THIS 31<sup>st</sup> DAY OF OCTOBER, 2001, BY RALPH A. LANZBATH AND MARY K. LANZBATH, CO-TRUSTEES OF THE RALPH A. LANZBATH REVOCABLE TRUST.

NOTARY PUBLIC  
*Sary L. Wiley*  
MY APPOINTMENT EXPIRES: 1/13/05



ENTERED ON TRANSFER RECORD THIS 9<sup>th</sup> DAY OF JANUARY, 2002  
*Don Bruce* COUNTY CLERK  
DON BRUCE

THIS IS TO CERTIFY THAT THIS INSTRUMENT WAS FILED FOR RECORD IN THE 6<sup>th</sup> REGISTER OF DEEDS OFFICE AT 2:20 P.M., ON THE TWENTY-NINTH DAY OF JANUARY, 2002  
*Bill Meek* REGISTER OF DEEDS  
*Shirley K. ...* DEPUTY



2045520