

# STORM WATER SEWER TO SERVE Timber Ridge 3rd Addition

Lot 3  
Private Project Number: 1330 PPS (307331)

CITY OF WICHITA, KANSAS

James Armour, P.E. City Engineer

April 2006

**Bench Marks**

Site Bench Mark:  
"□" Chiseled on Top of Curb 131.01'  
East of Northeast Corner of Lot 3,  
Timber Ridge 3rd Addition.  
Elevation = 1347.41 (MSL)

**Index**

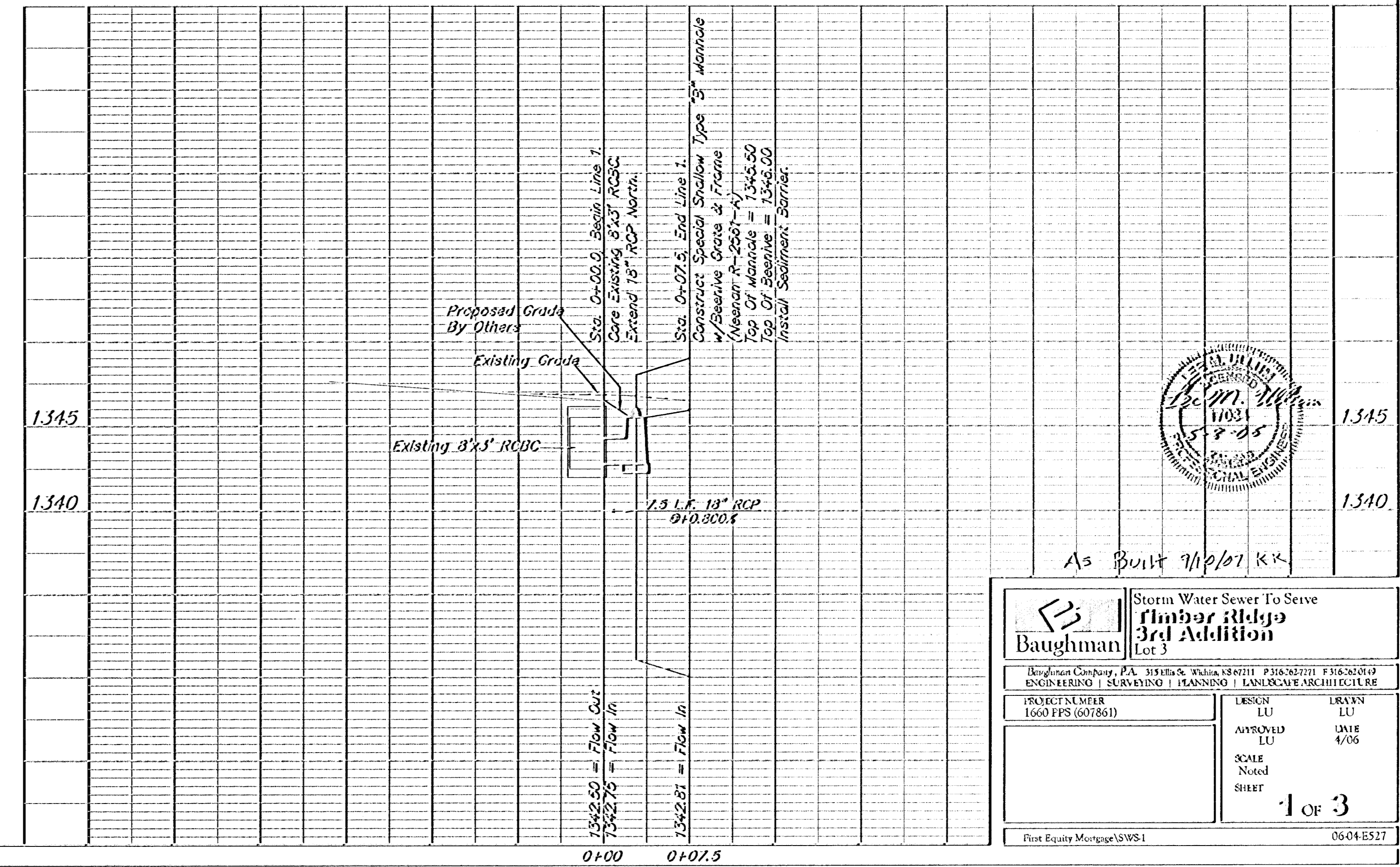
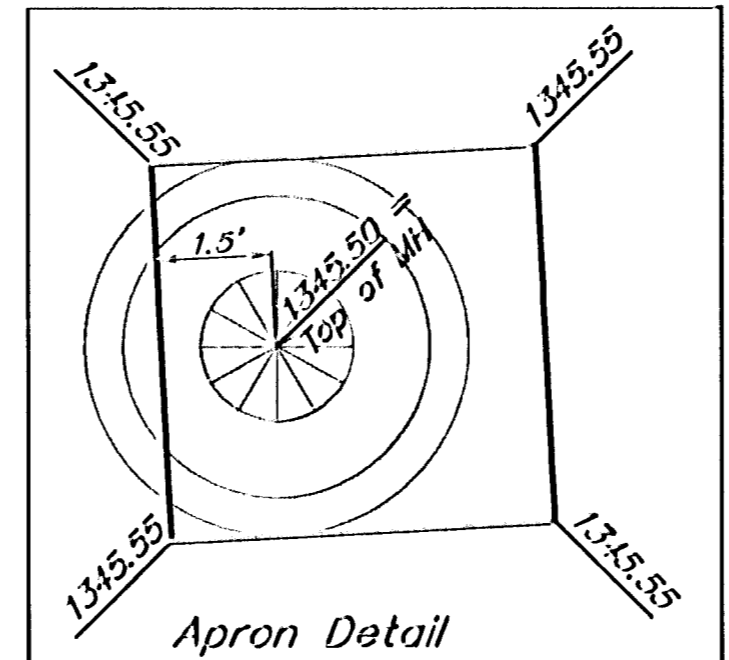
Cover/Plan/Profile Sheet	1
Survey	2
Copy Of Plot	3
Manhole Detail	Available on Request
Frame & Cover Details	Available on Request
BMP Erosion Details	Available on Request

**Legal Description**

Lot 3, Timber Ridge 3rd Addition  
Wichita, Sedgwick County Kansas.

**General Notes**

- Contractor will be required to provide notice to utility companies a minimum of forty-eight (48) hours prior to any excavation, as follows:  
Kansas Gas-Call 687-2470  
The Contractor must notify the following in case of an emergency:  
Cox Communications 262-4270  
Kansas City Service Company 1-888-432-4950  
Western Energy (Electric) 331-2650  
Aquila Energy (Gas) 1-800-303-0357  
Southwestern Bell Telephone Co. 1-800-288-8313  
City of Wichita Water Dept. (Water) 262-6000  
City of Wichita Sewer Maint. (SS) 262-6000  
City of Wichita Storm Saver Maint. 263-1000  
City of Wichita Traffic Maint. 263-1034
- All disturbed R/W areas not intended for pavement or sidewalk construction shall be seeded with Kansas Premium Fescue blend at a rate of 3 lb./1000 Sq. Ft., fertilized with a 16-20-6 ratio at a rate of 4 lb./1000 Sq. Ft., and mulched with Prairie Hay at a rate of 92 lb./1000 Sq. Ft. Mulch shall be "patted" with forks or punched into soil to reduce loss due to wind.
- Utility service lines, poles, valve boxes, meters, at caters are to be adjusted as necessary by others prior to construction unless the plans specifically call for their adjustment by the Contractor or unless the plans specifically identify a utility to be adjusted by its owner during construction. Existing utilities and their location, as shown on the plans represent the best information obtainable for design and shall be field verified. The contractor will be required to work around existing utilities within the right-of-way which do not conflict with proposed construction.
- All storm sewers and appurtenances shall be installed in accordance with the most recent edition of City of Wichita, Kansas Standard Specifications for the Construction of City Projects.
- Manhole, Frame and Cover details and BMP erosion details available from Baughman Company, P.A. Contact Lea Ullum (262-7271)



APPROVED AS NOTED  
BY CITY ENGINEER OF WICHITA

Storm Sewers \_\_\_\_\_

NOTE TO CONTRACTORS

Installation, inspection and testing for this project is to be provided by a Licensed Consulting Engineering Firm under contract with the Owner/Developer. Said inspection to be in accordance with the City of Wichita standard construction engineering practices and certified by a Licensed Professional Engineer. No work shall be performed in dedicated easements or public right-of-way by the Contractor without such inspection nor shall any work be commenced without written authorization by the City Engineer. All Construction and Materials shall comply with the City of Wichita Specifications and Standards (on file and available in the City Engineer's Office).

As Built 7/10/07 KK

Storm Water Sewer To Serve <b>Timber Ridge 3rd Addition</b> Lot 3	
Baughman Company, P.A. 3150 S. W. 10th St. Wichita, KS 67211 P:316-262-0149 ENGINEERING   SURVEYING   PLANNING   LANDSCAPE ARCHITECTURE	
PROJECT NUMBER 1660 PPS (607861)	DESIGN LU APPROVED LU SCALE Noted SHEET
DESIGN LU DATE 4/06 SCALE Noted SHEET	
<b>1 OF 3</b>	
First Equity Mortgage LWS1 0604ES27	

