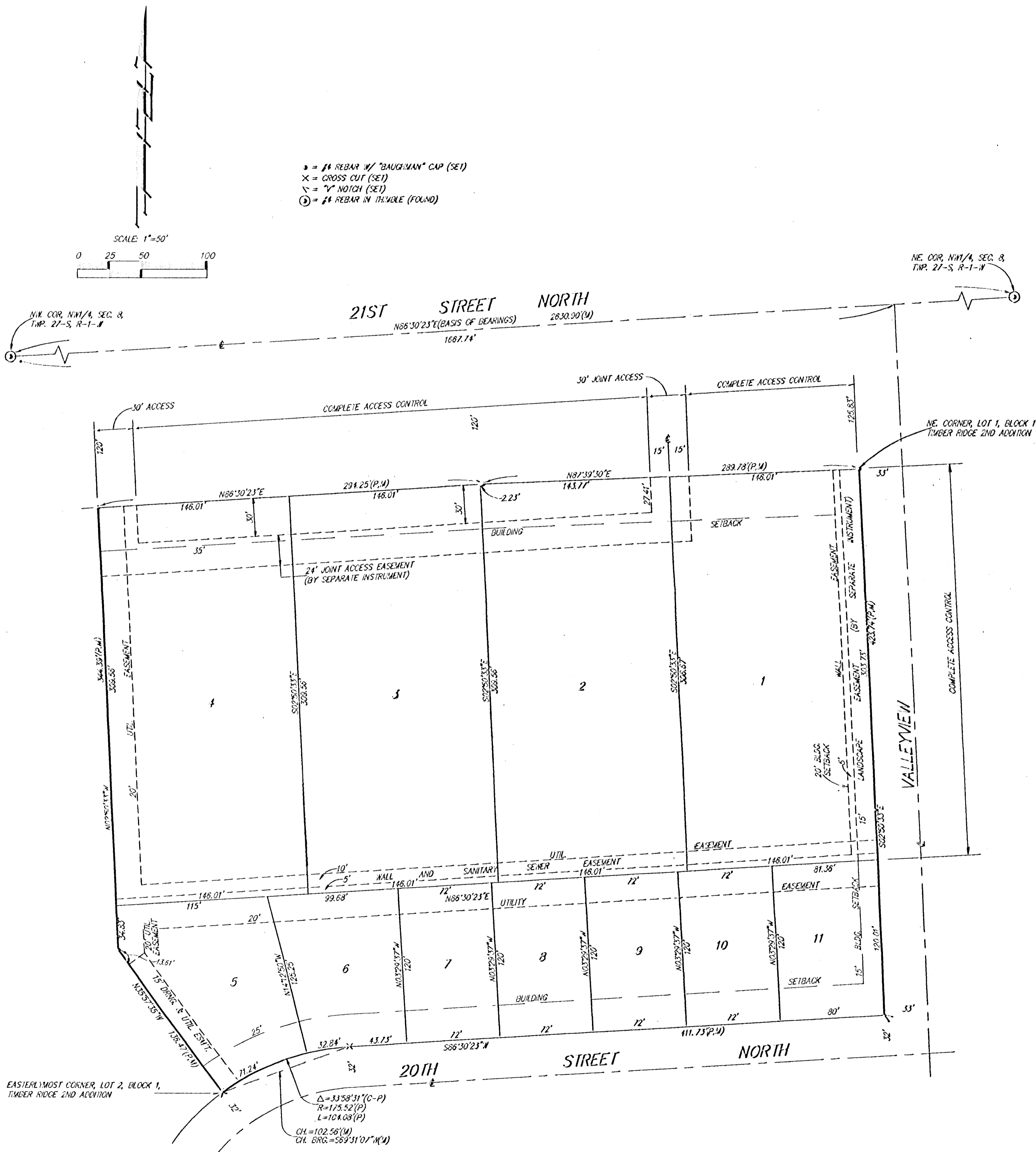


TIMBER RIDGE 3RD ADDITION

WICHITA, SEDGWICK COUNTY, KANSAS



State of Kansas) SS We, Baughman Company, P.A., Surveyors in Sedgwick County and State do hereby certify that we have surveyed and platted "TIMBER RIDGE 3RD ADDITION", Wichita, Sedgwick County, Kansas, and that the accompanying plat is a true and correct exhibit of the property surveyed, described as and being a replat of Lot 1, Block 1, Timber Ridge 2nd Addition, Wichita, Sedgwick County, Kansas.

All being situated in the NW 1/4 of Sec. 8, Twp. 27-S, R-1-W of the 6th P.M., Sedgwick County, Kansas.

Existing public easements and dedications being vacated by virtue of K.S.A. 12-512(b).

Baughman Co., P.A.

Michael G. Conroy, L.S. 1972
 Michael G. Conroy, L.S. 1972 Surveyor

Know all men by these presents that we, the undersigned, have caused the land in the surveyors certificate to be platted into Lots to be known as "TIMBER RIDGE 3RD ADDITION", Wichita, Sedgwick County, Kansas. The utility easements are hereby granted as indicated for the construction and maintenance of all public utilities. The wall easement is hereby granted as indicated for the construction and maintenance of a private wall and utility service lines are allowed to cross this easement. The wall and sanitary sewer easement is hereby granted as indicated for the construction and maintenance of a private wall and utility service lines and sanitary sewer service lines are allowed to cross this easement. The drainage and utility easement is hereby granted as indicated for drainage purposes and for the construction and maintenance of all public utilities. All abutters rights of access shall be as depicted on the face of the plat and are hereby granted to the City of Wichita, Kansas. The permitted entrance locations shall be as determined by the City Engineer of the City of Wichita, Kansas.

B. & E. Investments, Inc.
 Matthias F. Eck, President

T. K. Development, LLC
 J. Kendall Dillehay, Member and Manager

Terry L. Duncan, Member and Manager

State of Kansas) SS The foregoing instrument acknowledged before me, this 8 day of March, 1996, by Matthias F. Eck, President of B. & E. Investments, Inc., on behalf of the corporation.

Theresa Murphy, Notary Public
 My App't. Exp. 8-16-99

State of Kansas) SS The foregoing instrument acknowledged before me, this 8 day of March, 1996, by J. Kendall Dillehay, Member and Manager of T. K. Development, LLC, on behalf of the company.

Theresa Murphy, Notary Public
 My App't. Exp. 8-16-99

We, the undersigned, holders of a mortgage on the above described property do hereby consent to the plat of "TIMBER RIDGE 3RD ADDITION", Wichita, Sedgwick County, Kansas.

First National Bank of Anthony

Richard Cienny, V.P.
 Richard Cienny (Title)

State of Kansas) SS The foregoing instrument acknowledged before me, this 10th day of March, 1996, by Richard Cienny, Vice President of First National Bank of Anthony, on behalf of the bank.

Doris H. McGinnis, Notary Public
 My App't. Exp. 12-12-99

This plat of "TIMBER RIDGE 3RD ADDITION", Wichita, Sedgwick County, Kansas has been submitted to and approved by the Wichita-Sedgwick County Metropolitan Area Planning Commission, Wichita, Kansas.
 Dated this 25th day of January, 1996.
 Wichita-Sedgwick County Metropolitan Area Planning Commission

Susan Osborne-Howes, Chair
 Marvyn Krout, Secretary

This plat approved and all dedications shown hereon accepted by the City Council of the City of Wichita, Kansas, this 9th day of April, 1996.

Bob Knight, Mayor
 Pat Burnett, Deputy City Clerk

Entered on transfer record this 22nd day of July, 1996.
 Susan E. Crockett-Spoon, Deputy Clerk

State of Kansas) SS This is to certify that this plat has been filed for record in the office of the Register of Deeds, this 23rd day of July, 1996, at 10:00 o'clock A.M. and is duly recorded.

Pat Kettler, Register of Deeds
 Ed-Rosa Reyes Hernandez, Deputy
 #1543791

State of Kansas) SS The foregoing instrument acknowledged before me, this 8 day of March, 1996, by Terry L. Duncan, Member and Manager of T. K. Development, LLC, on behalf of the company.

Theresa Murphy, Notary Public
 My App't. Exp. 8-16-99