

Engineer:

Tuttle & Associates, Inc.

9718 E. 55TH Place, Tulsa, OK 74146

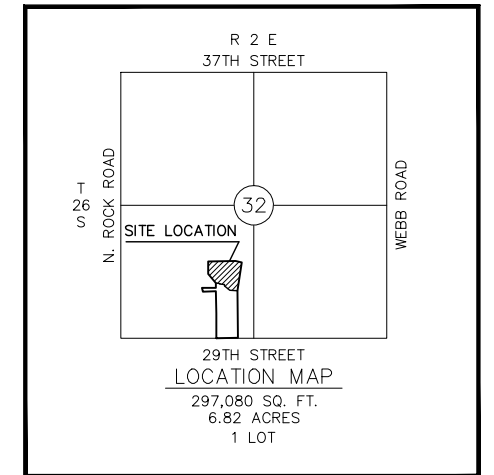
Phone: (918) 663-5567

Owner:

The Villas of Waterford II, LLC

4200 E. Skelly Dr., Tulsa, OK 74133

Phone: (918) 492-1983

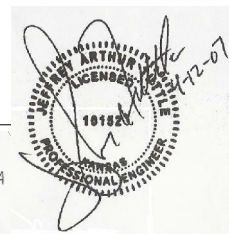


Sheet Index

1	COVER
2	SEWER SITE PLAN
3	SEWER PLAN
4	SEWER PLAN & PROFILE
5-7	DETAILS
8	PLAT OF SURVEY

LEGAL DESCRIPTION
Parcel B

A tract of land being a part of Lot 17, Block 1, Mediterranean Plaza, an Addition to Wichita, Sedgwick County, Kansas, said tract being more particularly described as follows: Commencing at the SE corner of Lot 16, Block 1, Mediterranean Plaza; thence N0°52'20"W along the east line of said Lot 16, 930.00 feet; thence N08°18'04"E along said east line a distance of 4.57 feet to the point of beginning; thence N85°41'28"W a distance of 155.05 feet; thence N52°29'14"W a distance of 132.83 feet; thence N02°36'10"E a distance of 35.16 feet; thence N89°19'42"W a distance of 90.79 feet; thence N 21°30'05" W a distance of 18.87 feet; thence N88°48'23"W a distance of 77.28 feet to a point on the east line of Lot 2, Block 1, Home Design Center Addition, an Addition to Wichita, Sedgwick County, Kansas; thence N00°53'18"W along said east line a distance of 7.90 feet; thence N40°16'28"W along said east line a distance of 228.98 feet; thence N00°53'18"W along said east line a distance of 248.03 feet to a point on the north line of Lot 17, Block 1, Mediterranean Plaza; thence N89°06'42"E along said north line a distance of 550.00 feet; thence S78°10'32"E along said north line a distance of 120.00 feet to the northeast corner of said Lot 17; thence S08°18'04"W along the east line of said Lot 17 a distance of 568.37 feet to the point of beginning. Said tract containing 6.82 acres, more or less.



APPROVED AS NOTED
BY CITY ENGINEER OF WICHITA

Storm Water VRH 4/18/07

NOTE TO CONTRACTORS

Installation, inspection and testing for this project is to be provided by a Licensed Consulting Engineering Firm under contract with the Owner/Developer. Said Inspection to be in accordance with the City of Wichita standard construction engineering practices and certified by a Licensed Professional Engineer. No work shall be performed in dedicated easements or public right-of-way by the Contractor without such inspection nor shall any work be commenced without written authorization by the City Engineer. All Construction and Materials shall comply with the City of Wichita Specifications and Standards (on file and available in the City Engineer's Office).

PROJECT NUMBER: 1763 PPS (607861)

SANITARY SEWER PLANS
FOR
Waterford II Apartments

JAMES L. ARMOUR, P.E., CITY ENGINEER
WICHITA, KANSAS

AS-BUILT PLANS

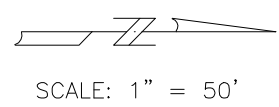
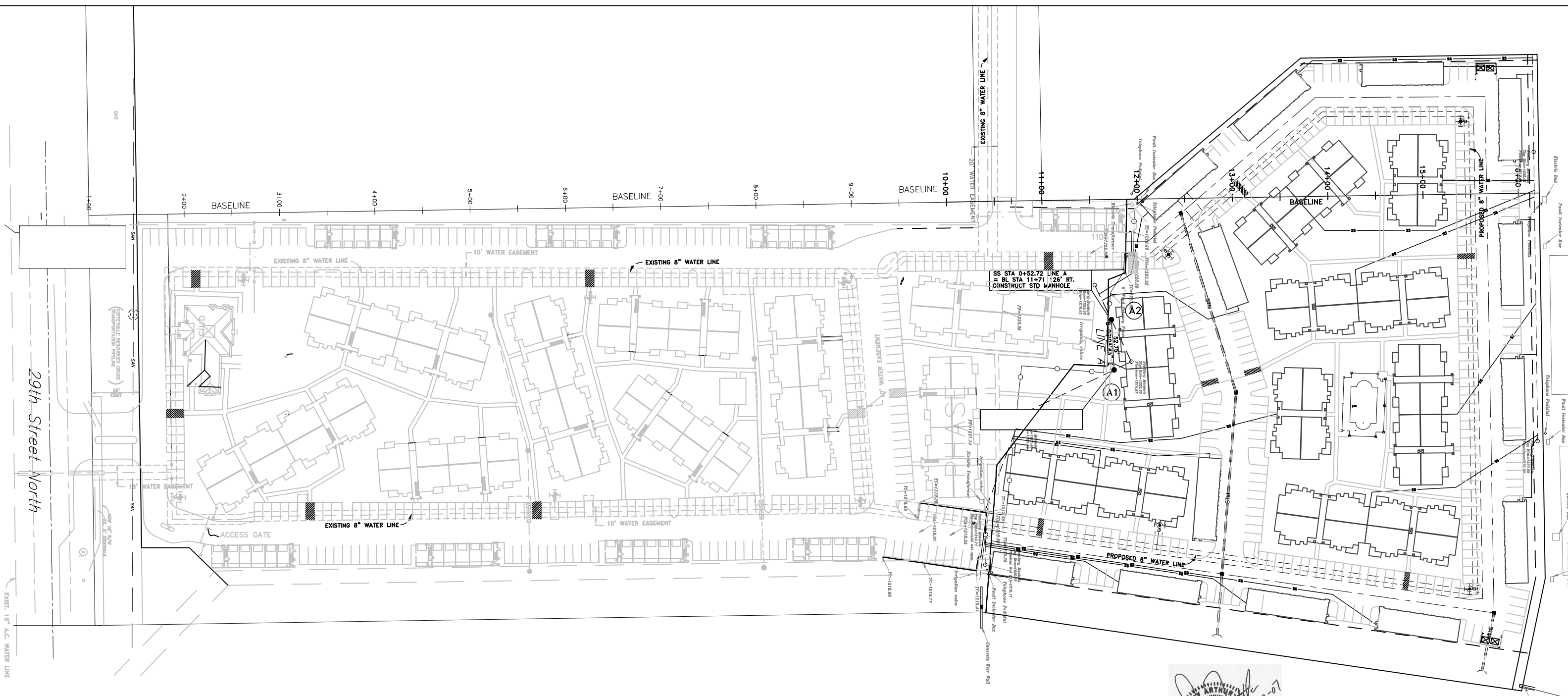
CONTRACTOR : A. & F. EXCAVATING

TUTTLE & ASSOCIATES, INC;
INSPECTOR : BRYAN DEAR

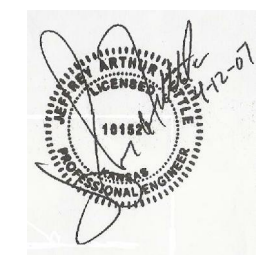
.pdf by : BD 9-25-07

Released 2/20/08
JDL 3/3/08
Note: MH does not meet
CofW specs.

BENCHMARK: CHISELED "□"
W. END N. HW
DOUBLE 3.5'X6' RCB
ELEV. 215.93 (CITY DATUM)



AS-BUILT PLANS
CONTRACTOR: A. & F. EXCAVATING
INSPECTOR: TUTTLE & ASSOCIATES, INC;
BRYAN DEAR
.pdf by: BD 9-25-07



PROJECT NUMBER
 1763 PPS (607861)

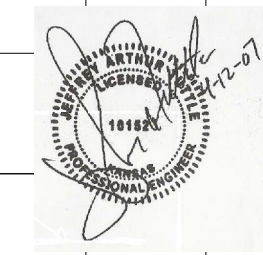
SANITARY SEWER SITE PLAN
WATERFORD II APARTMENTS
 CITY OF WICHITA, KANSAS
 PLANS & ESTIMATES PREPARED BY:
TUTTLE & ASSOCIATES, INC.

REVISION	BY	DATE	PLAN SCALE	APPROVED:	
			1" = 50'	DESIGNED BY: J. TUTTLE DFILE: 4826SEWER SITE RECOMMENDED: DEVELOPMENT SERVICES RECOMMENDED: ENGINEERING SERVICES PUBLIC WORKS DIRECTOR	
			HORIZONTAL		
			1" =		
			VERTICAL		
			1" =		
			FILE	DRAWING	DATE
			ATLAS PAGE NO		SHEET 2 OF 8 SHEETS

9718 E. 55TH PL.
 TULSA, OK. 74146
 918-663-5567



SCALE: 1" = 40'



PROJECT NUMBER
1763 PPS (607861)

SANITARY SEWER PLAN AND PROFILE
WATERFORD II APARTMENTS
CITY OF WICHITA, KANSAS

AS-BUILT PLANS
CONTRACTOR A. & F. EXCAVATING
INSPECTOR BRYAN DEAR
.pdf by: BD 9-25-07

PLANS & ESTIMATES PREPARED BY:
TUTTLE & ASSOCIATES, INC.
9718 E. 55TH PL.
TULSA, OK. 74146
918-663-5567

BY	REVISION	DATE	PLAN SCALE	DESIGNED BY:	APPROVED:
			1" = 40'	DFILE: 4826SEWERP&P	
			PROFILE SCALE	RECOMMENDED:	
			HORIZONTAL	DEVELOPMENT SERVICES	
			VERTICAL	RECOMMENDED:	
			1" = 40'	ENGINEERING SERVICES	PUBLIC WORKS DIRECTOR
			1" = 5'		
			FILE	DRAWING	DATE
			ATLAS PAGE NO		SHEET 4 OF 8 SHEETS

