

SANITARY SEWER EXTENSION LATERAL 12, MAIN 6, CIS SOUTHWEST PASSAGE PHASE 1

**PROJECT NO. 468-84228
OCA # 744209**

BENCH MARK

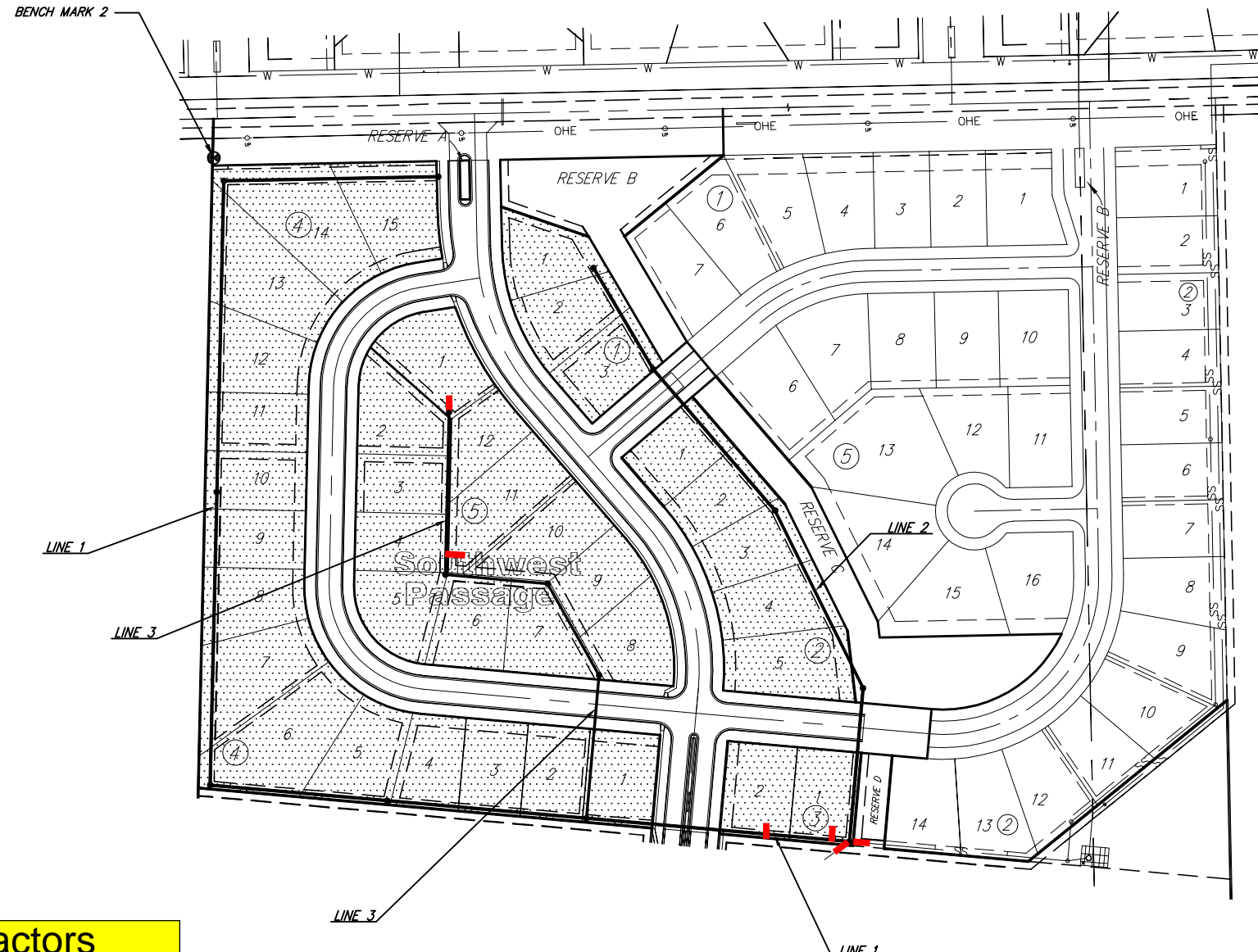
- BENCHMARK 1** BENCHMARK: COW BENCHMARK, NE CORNER, INTERSECTION OF 135TH WEST AND PANNEE, SOUTHWEST CORNER OF CONCRETE BASE FOR HLP. ELEV. 1359.65 M.S.L.
- BENCHMARK 2** ON-SITE BENCH MARK: TOP OF RUGGLES & BOHM BRASS DISK SET IN CONCRETE 1112' W. & 50' S. OF THE NE CORNER, NW1/4, SECTION 1-T285-R2W. ELEV = 1337.84 M.S.L.

GENERAL NOTES

- 1) Contractor will be required to provide a minimum advance notice of seventy-two (72) hours to utility companies prior to starting any excavation as follows:

Kansas One-Call	687-2470
-----------------	----------
- 2) The Contractor must notify the following in case of an emergency:

Cox Communications	262-0661
Kansas Gas Service	383-8600
Westar	383-8600
Aquila	1-800-303-0357
SBC	1-800-286-8313
City of Wichita Water Department	262-6000
City of Wichita Sewer Maintenance	262-6000
- 3) Underground utility service lines and overhead utility pole lines are to be adjusted as necessary by others prior to construction unless the plans specifically call for their adjustment by the Contractor or unless the plans specifically identify a utility to be adjusted by its owner during construction. Existing utilities and their location, as shown on the plans, represent the best information obtainable for design. Location information has been obtained from the various utility companies and is either from company record drawings or company-provided field locations. The Contractor will be required to work around existing utilities within the right-of-way which do not conflict with proposed construction.
- 4) Rubble from the removal of miscellaneous structures and excess excavation which is to be wasted shall be disposed of on sites to be provided by the Contractor. These sites shall be approved by the Engineer as to suitability, appearance and site location. Locations that, in the opinion of the Engineer, will leave an unsightly appearance will not be approved.
- 5) All disposal sites must be approved by the Kansas Department of Health and Environment. Material either stockpiled or disposed of in a flood plain would require a Kansas State Board of Agriculture permit. Any material dumped in waters of the United States or wetlands is subject to U.S. Corps permitting regulations. Any material buried or stockpiled beyond approved of Engineers construction limits would require additional archeological investigations unless buried in a previously approved borrow location.
- 6) The Contractor shall give all property owners and/or tenants of developed property directly abutting the construction of this project a minimum of ten (10) days advance notice prior to start of construction.
- 7) The Contractor shall be responsible for preserving property irons. The Contractor will be required to re-establish any property irons which are damaged or destroyed by his construction operations. Such irons shall be re-established by a licensed land surveyor in accordance with state laws.
- 8) NOTE: Easment grading to be done by others. Contractor shall place protective fill around manholes.
See Detail, Sheet 10

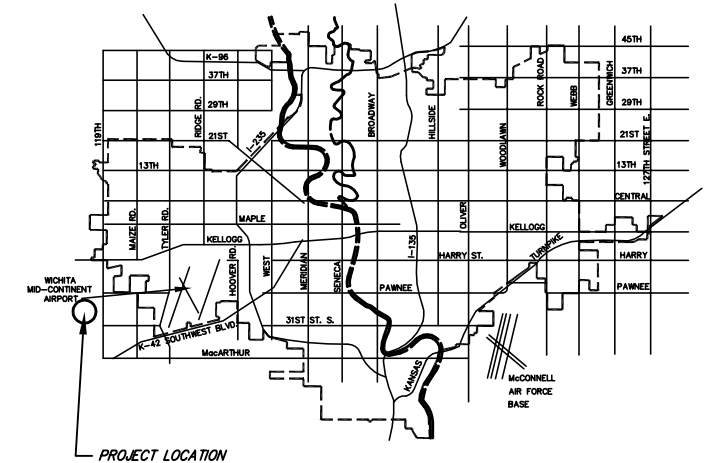


INDEX OF SHEETS

1. TITLE SHEET
- 2-5. SANITARY SEWER PLAN/PROFILE
6. TYPE 'P' MANHOLE DETAIL
7. MANHOLE RING & COVER DETAIL
8. RISER DETAILS
9. EROSION CONTROL PLAN
- 10-14. SOIL EROSION BMP'S
15. KEY MAP
16. FINAL PLAT



Scale: 1" = 100'



VICINITY MAP

Utility Contractors, Inc. - Contractors
 Kelly, R&B - Inspector
 Released 11/5/07
 As-Built
 Risers & Stubs
 .pdf by JDL 2/12/08



BENEFIT DISTRICT



IMPROVEMENT DISTRICT

CITY OF WICHITA, KANSAS

JAMES L. ARMOUR, P.E. - CITY ENGINEER



Ruggles & Bohm, P.A.

Engineering, Surveying, Land Planning
 924 North Main (316) 264-8008
 Wichita, Kansas 67203 (316) 264-4621 fax
 www.rbkansas.com E-mail: info@rbkansas.com