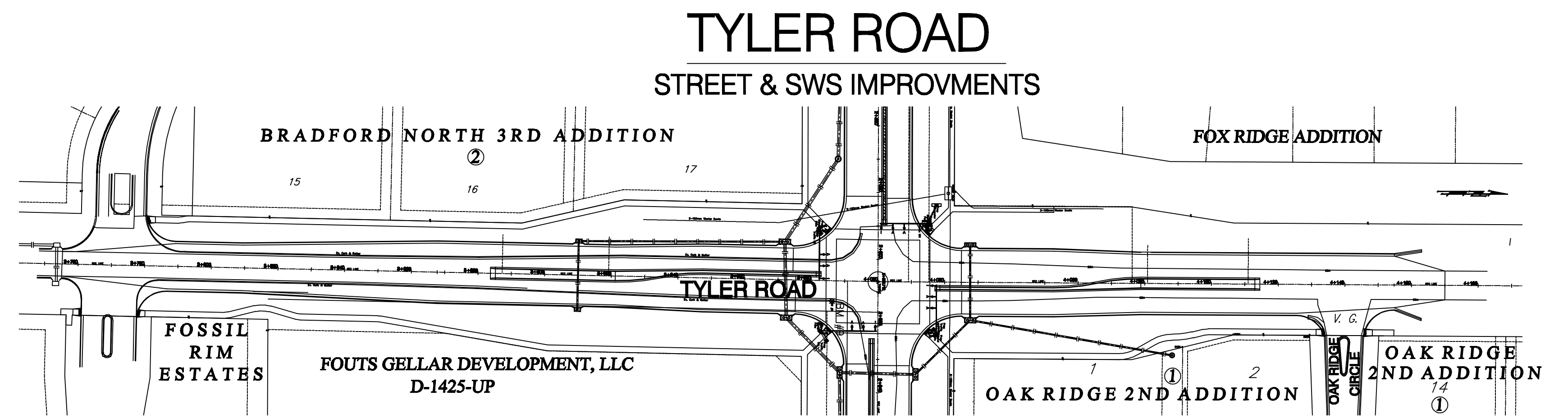
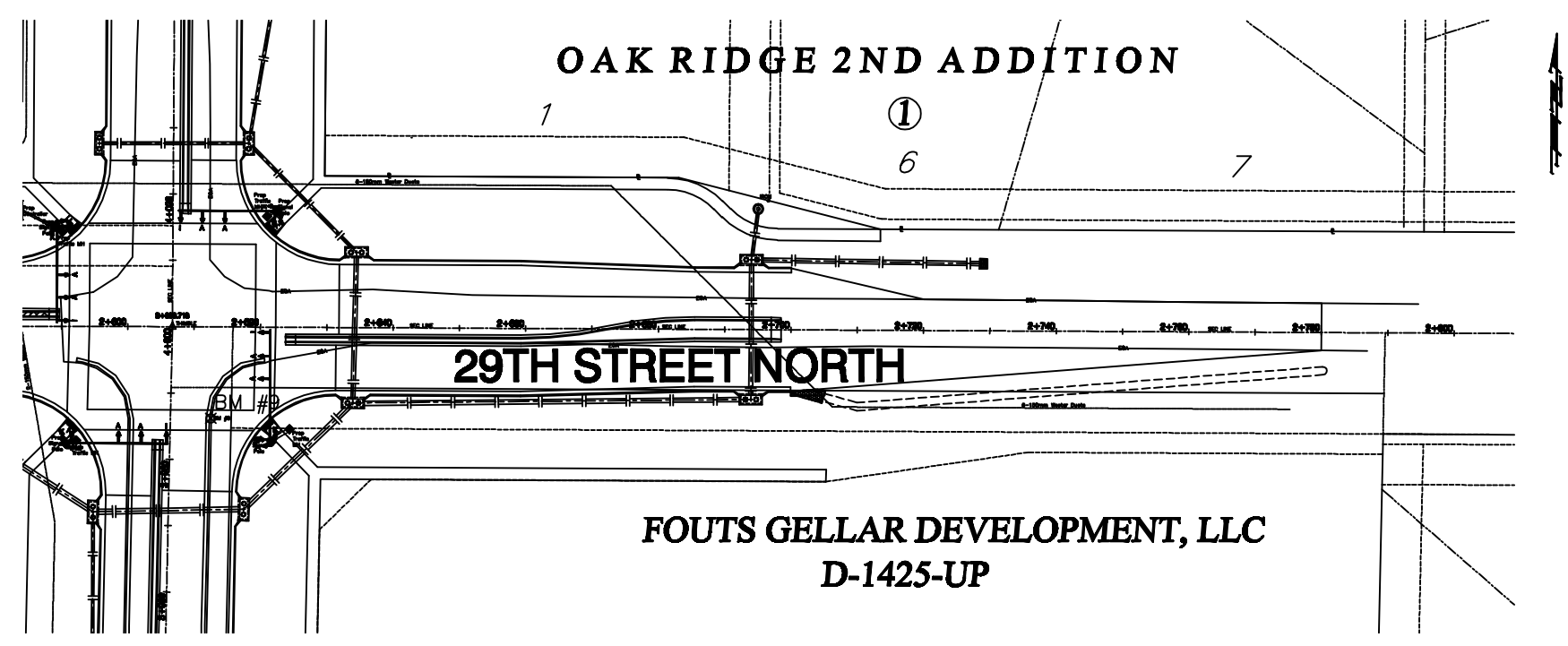
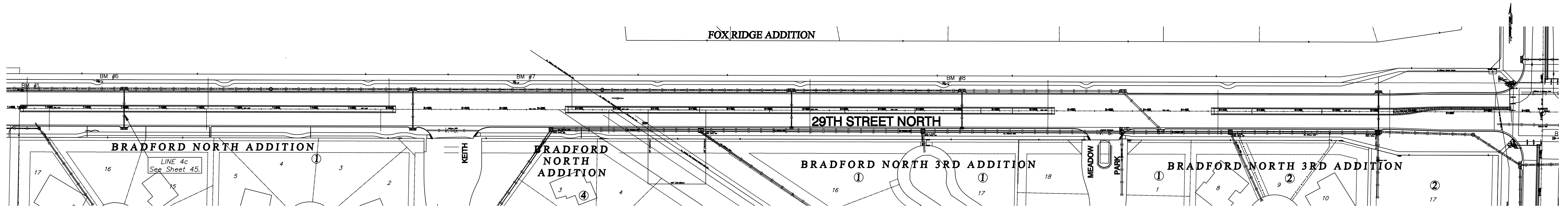
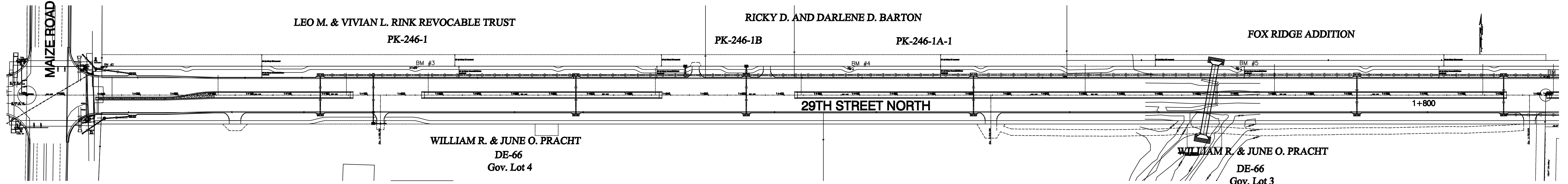


29th STREET NORTH

STREET & SWS IMPROVMENTS



BENCHMARKS:

- BM #1 - City of Wichita Disc Located .5 Mile East of Maize Road North of 29th Street North.
Sta. 1+803.63, 9.61m Lt.
Elev. 410.950 SI Units (1348.26 MSL)
- BM #2 - RR Spike in the South Face of Power Pole at the Northeast Corner of Maize Road and 29th Street South.
Sta. 1+039.59, 14.74m Lt.
Elev. 411.678 SI Units (1350.65 MSL)
- BM #3 - Small RR Spike in the South Face of the 4th Power Pole East of Maize Road on the North Side of 29th Street North.
Sta. 1+205.18, 14.69m Lt.
Elev. 412.090 SI Units (1352.00 MSL)
- BM #4 - 1/2" Rebar in the South Face of the 8th Power Pole East of Maize Road on the North Side of 29th Street North.
Sta. 1+434.14, 14.36m Lt.
Elev. 412.013 SI Units (1351.75 MSL)
- BM #5 - 80d Spike in the South Face of the 11th Power Pole East (3/8 mile) of Maize Road on the North Side of 29th Street North.
Sta. 1+639.15, 14.28m Lt.
Elev. 410.880 SI Units (1348.03 MSL)
- BM #6 - RR Spike in the South Face of the 3rd Power Pole West of Keith on the North Side of 29th Street North.
Sta. 1+843.42, 14.83m Lt.
Elev. 411.379 SI Units (1349.67 MSL)
- BM #7 - Small RR Spike in the South Face of the 1st Power Pole East of Keith on the North Side of 29th Street North.
Sta. 2+063.40, 14.84m Lt.
Elev. 411.437 SI Units (1349.86 MSL)
- BM #8 - Small RR Spike in the South Face of the 2nd Power Pole West of Meadow Park on the North Side of 29th Street North.
Sta. 2+290.26, 14.61m Lt.
Elev. 412.352 SI Units (1352.86 MSL)
- BM #9 - "□" on the Top of Curb at the South End of the Curb Return at the Southeast Corner of Tyler Road and 29th Street North.
Sta. 2+612.58, 13.78m Rt.
Elev. 415.765 SI Units (1364.06 MSL)

PROJECT NUMBER 472-83863a		SHEET NAME LS02		ENGINEERING DIRECTORY E:\29th-Tyler to Maize\scope\		CAPITAL IMPROVEMENT PROJECT KEYSHEET		BAUGHMAN COMPANY, P.A. ENGINEERING, SURVEYING, & PLANNING 316-262-7271 • 316 ELLIS • WICHITA, KANSAS 67211		SHEET A.1
DESIGN NLS	DRAWN NLS	APPROVED BDT	DATE April 07	SCALE 1:10	BAUGHMAN NO 02-02-E232	29TH STREET NORTH - MAIZE ROAD to TYLER ROAD				OF 18