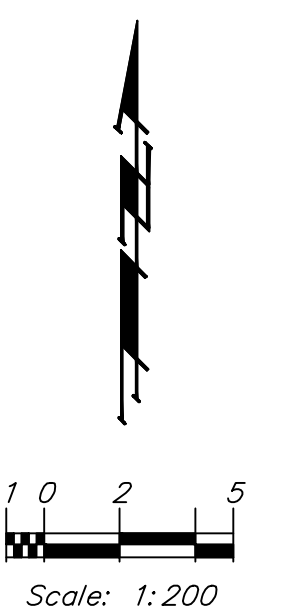
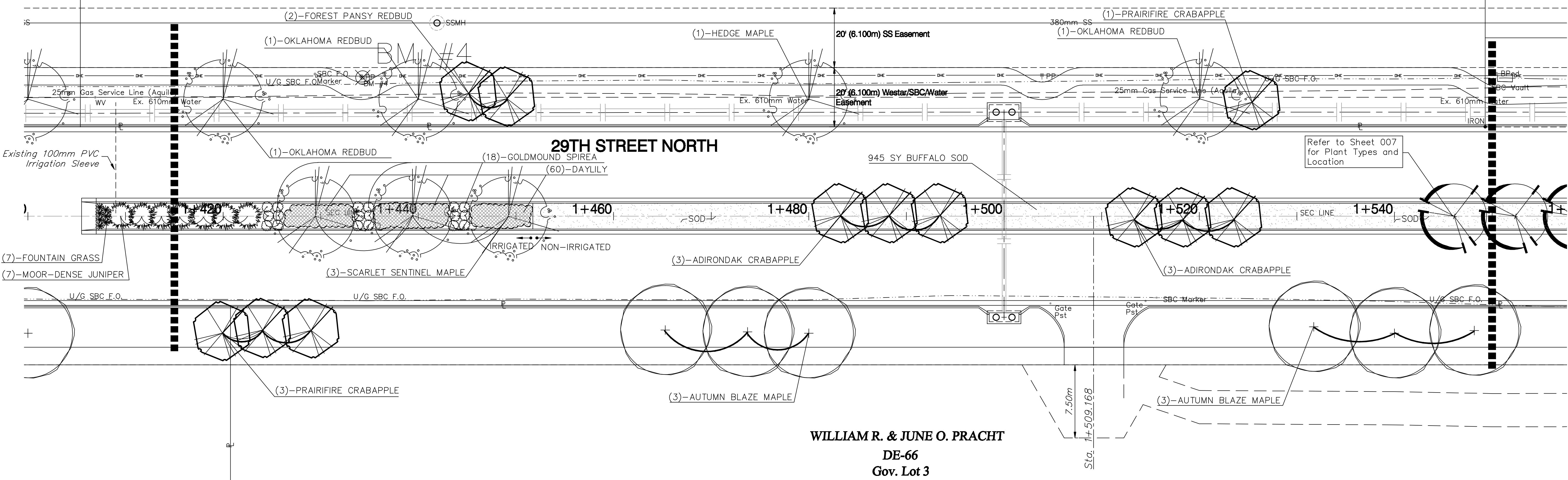


**BENCHMARK:**

BM #4 - 1/2" Rebar in the South Face of the 8th Power Pole East of Maize Road on the North Side of 29th Street North.  
Sta. 1+434.14, 14.36m Lt.  
Elev. 412.013 SI Units (1351.75 MSL)



**RICKY D. AND DARLENE D. BARTON**  
PK-246-1A-1



**WILLIAM R. & JUNE O. PRACHT**  
DE-66  
Gov. Lot 3

**PLANT SCHEDULE**

| QTY | BOTANICAL NAME                           | COMMON NAME                 | SIZE    | CONDITION | REMARKS            |
|-----|--|-----------------------------|---------|-----------|--------------------|
| 1   | <i>Acer campestre</i>                    | Hedge Maple                 | 2" Cal. | B&B       | Single Stem Only   |
| 6   | <i>Acer fremanii</i> 'Autumn Blaze'      | Autumn Blaze Maple          | 2" Cal. | B&B       | Single Stem Only   |
| 3   | <i>Acer rubrum</i> 'Scarsen'             | Scarlet Sentinel Maple      | 2" Cal. | B&B       | Single Stem Only   |
| 2   | <i>Cercis canadensis</i> 'Forest Pansy'  | Forest Pansy Redbud         | 2" Cal. | B&B       | Single Stem Only   |
| 3   | <i>Cercis reniformis</i> 'Oklahoma'      | Oklahoma Redbud             | 2" Cal. | B&B       | Single Stem Only   |
| 6   | <i>Malus</i> 'Adirondak'                 | Adirondak Crabapple         | 2" Cal. | B&B       | Single Stem Only   |
| 4   | <i>Malus</i> 'Prairifire'                | Prairifire Crabapple        | 2" Cal. | B&B       | Single Stem Only   |
| 7   | <i>Juniperus sabina</i> 'Monard'         | Moor-Dense Juniper          | 2-Gal.  | Container | Full & Healthy     |
| 18  | <i>Spirea japonica</i> 'Goldmound'       | Goldmound Spirea            | 2-Gal.  | Container | Full & Healthy     |
| 60  | <i>Hemerocallis</i> 'Stella de Oro'      | Stella De Oro Daylily       | 1-Gal.  | Container | Triangular Spacing |
| 7   | <i>Pennisetum alopecuroides</i> 'Hameln' | Dwarf Hameln Fountain Grass | 1-Gal.  | Container | Triangular Spacing |

|                                     |              |                    |   |                |  |  |   |                          |
|-------------------------------------|--------------|--------------------|---|----------------|--|--|---|--------------------------|
| PROJECT NUMBER<br><b>472-83863a</b> |              | SHEET NAME<br>LS06 | ENGINEERING DIRECTORY<br>E:\29th - Tyler to Maize |                | CAPITAL IMPROVEMENT PROJECT<br>29TH STREET NORTH LANDSCAPING<br>Sta. 1+410.000 to Sta. 1+550.0 |  | <b>BAUGHMAN COMPANY, P.C.</b><br>ENGINEERING, SURVEYING, & PLANNING<br>316-282-7271 • 315 ELLIS • WICHITA, KANSAS 67211 | SHEET<br>A.6<br>OF<br>18 |
| DESIGN<br>NLS                       | DRAWN<br>NLS | APPROVED<br>BDT    | DATE<br>April 07                                  | SCALE<br>Noted | BAUGHMAN NO<br>02-02-E232  |  |   |                          |