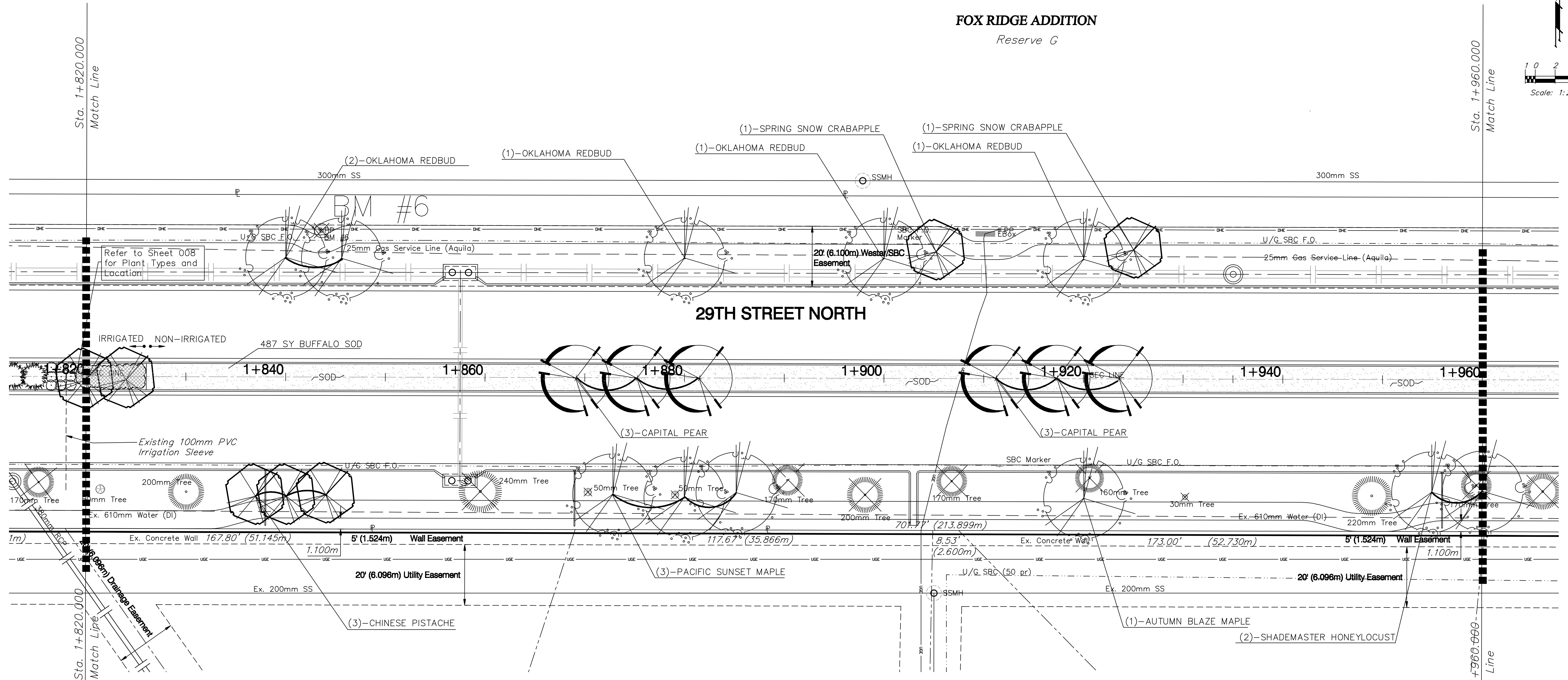
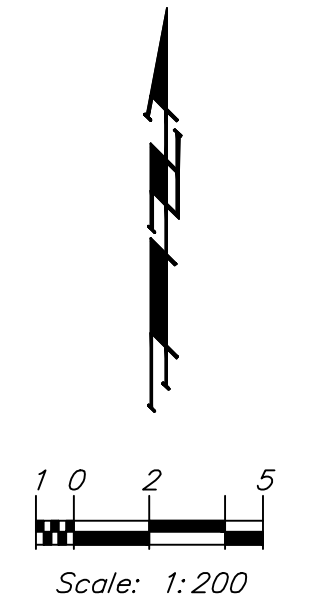


BENCHMARK:
 BM #6 - RR Spike in the South Face of the 3rd Power Pole West of Keith on the North Side of 29th Street North.
 Sta. 1+843.42, 14.83m Lt.
 Elev. 411.379 SI Units (1349.67 MSL)



PLANT SCHEDULE

QTY	BOTANICAL NAME	COMMON NAME	SIZE	CONDITION	REMARKS
1	<i>Acer fremanii</i> 'Autumn Blaze'	Autumn Blaze Maple	2" Cal.	B&B	Single Stem Only
3	<i>Acer truncatum</i> x <i>A. platanoides</i> 'Warrenred'	Pacific Sunset Maple	2" Cal.	B&B	Single Stem Only
5	<i>Cercis reniformis</i> 'Oklahoma'	Oklahoma Redbud	2" Cal.	B&B	Single Stem Only
2	<i>Gleditsia triacanthos</i> 'Shademaster'	Shademaster Honeylocust	2" Cal.	B&B	Single Stem Only
2	<i>Malus</i> 'Spring Snow'	Spring Snow Crabapple	2" Cal.	B&B	Single Stem Only
3	<i>Pistacia chinensis</i>	Chinese Pistache	2" Cal.	B&B	Single Stem Only
6	<i>Pyrus calleryana</i> 'Capital'	Capital Pear	2" Cal.	B&B	Single Stem Only

Note:
 Trees/Shrubs to be removed are marked thus:

PROJECT NUMBER 472-83863a		SHEET NAME LS09	ENGINEERING DIRECTORY E: 29th - Tyler to Maize Lscope\	CAPITAL IMPROVEMENT PROJECT 29TH STREET NORTH PAVING Sta. 1+820.000 to Sta. 1+950.000 29TH STREET NORTH - MAIZE ROAD to TYLER ROAD		BAUGHMAN COMPANY, P.A. ENGINEERING, SURVEYING, & PLANNING 316-282-7271 • 315 ELLIS • WICHITA, KANSAS 67211	SHEET A.9 OF 18
DESIGN NLS	DRAWN NLS	APPROVED BDT	DATE April 07	SCALE Noted	BAUGHMAN NO 02-02-E232		