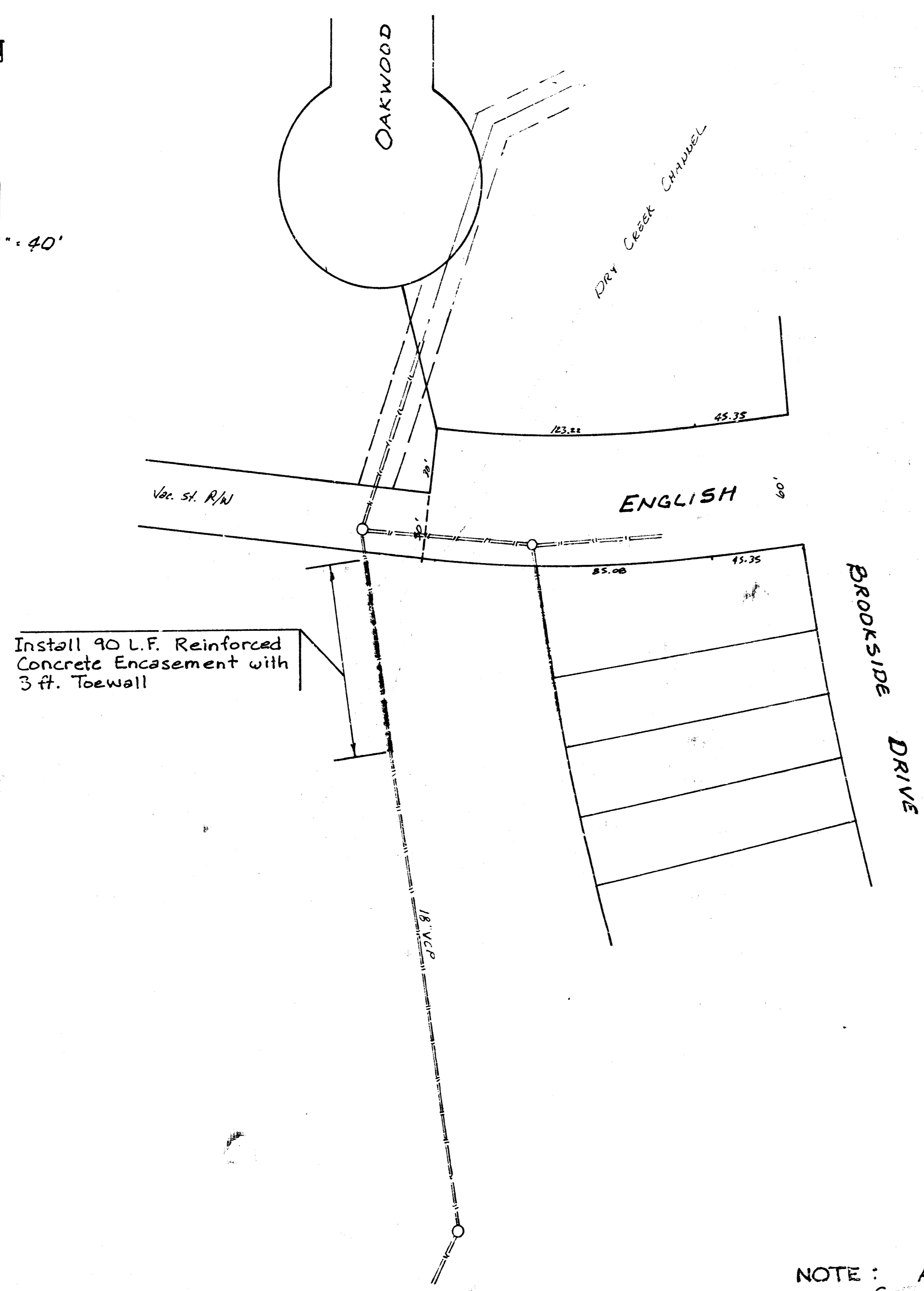
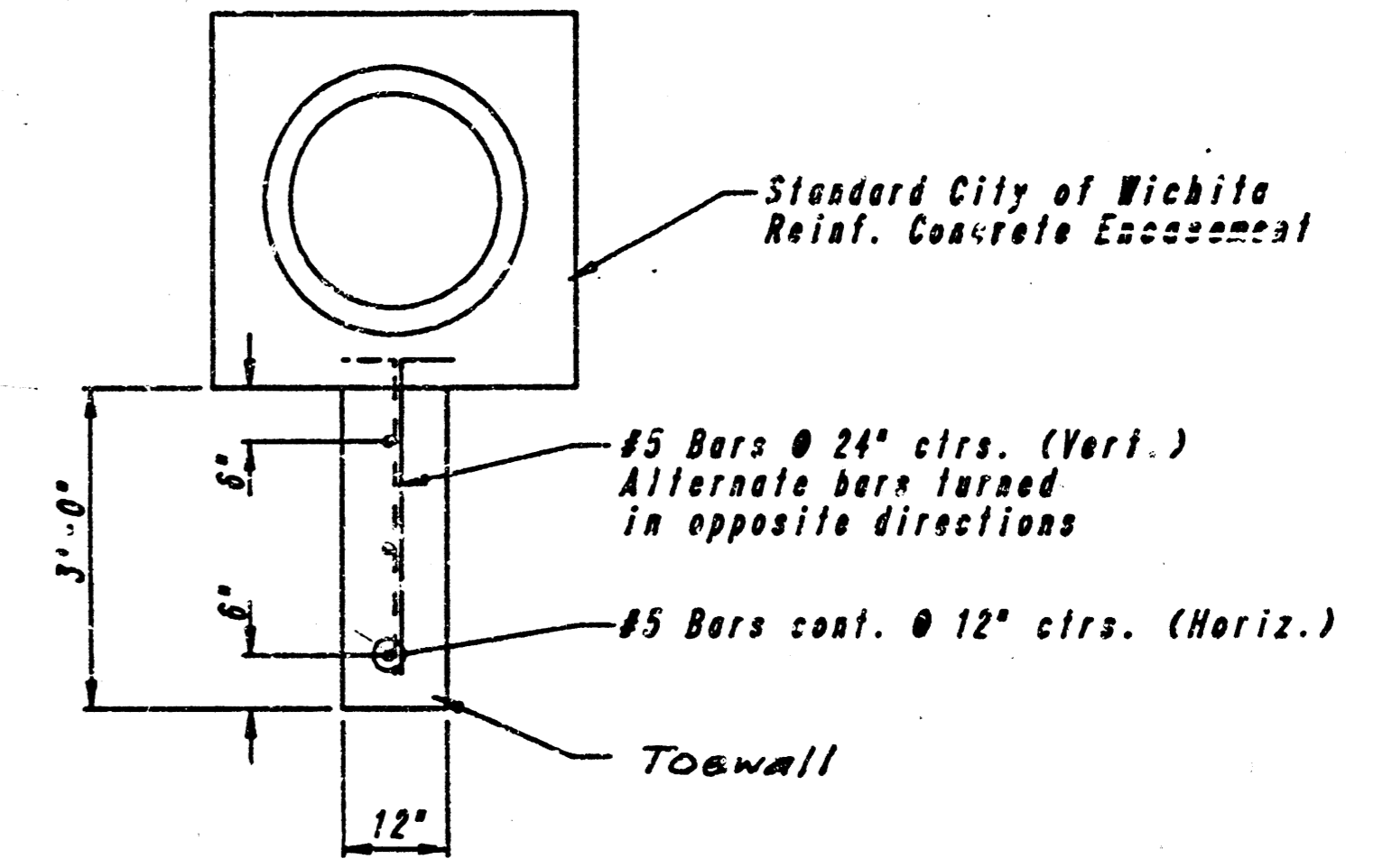
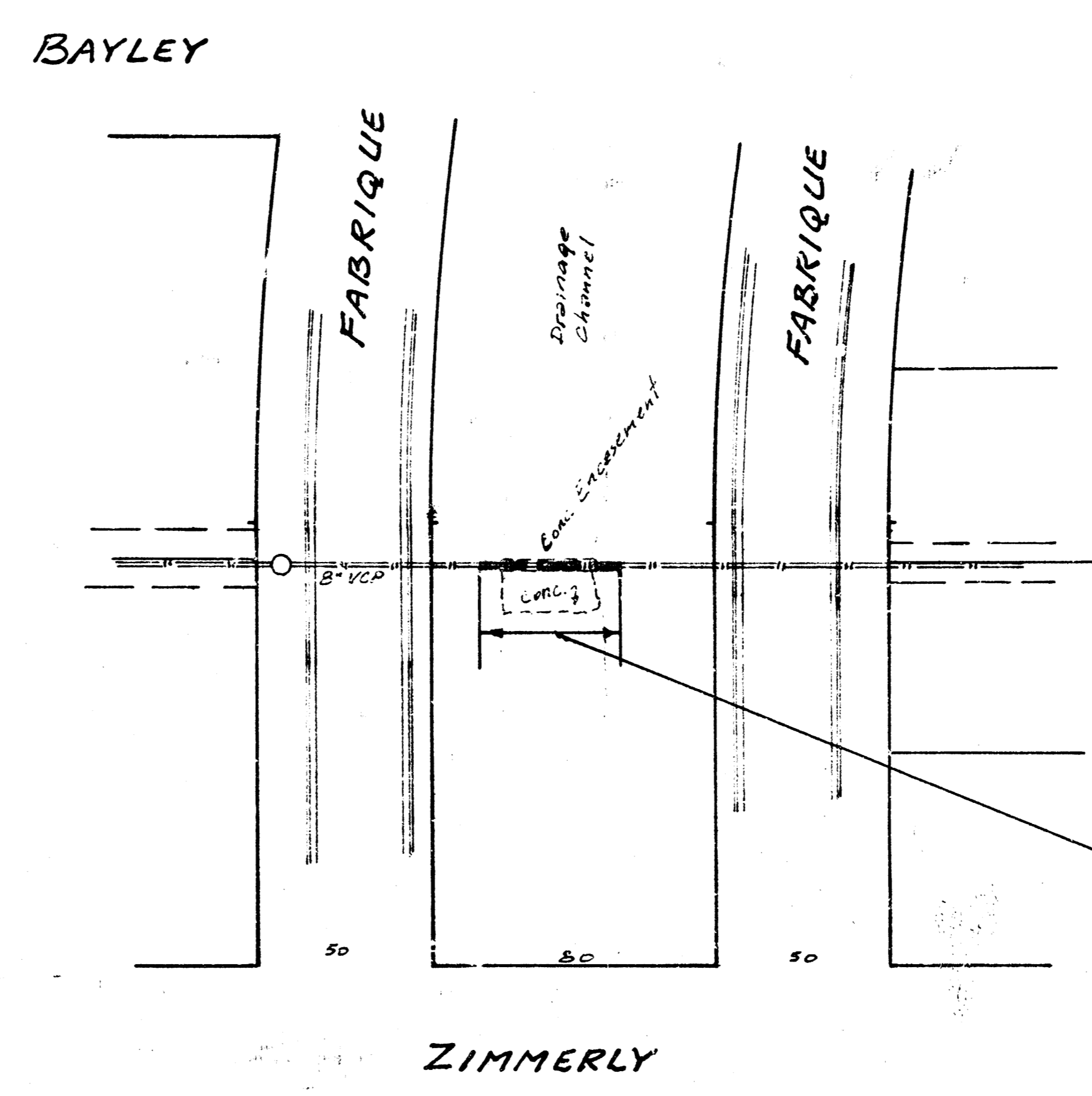


SCALE 1"=40'



Install 90 L.F. Reinforced Concrete Encasement with 3 ft. Toewall

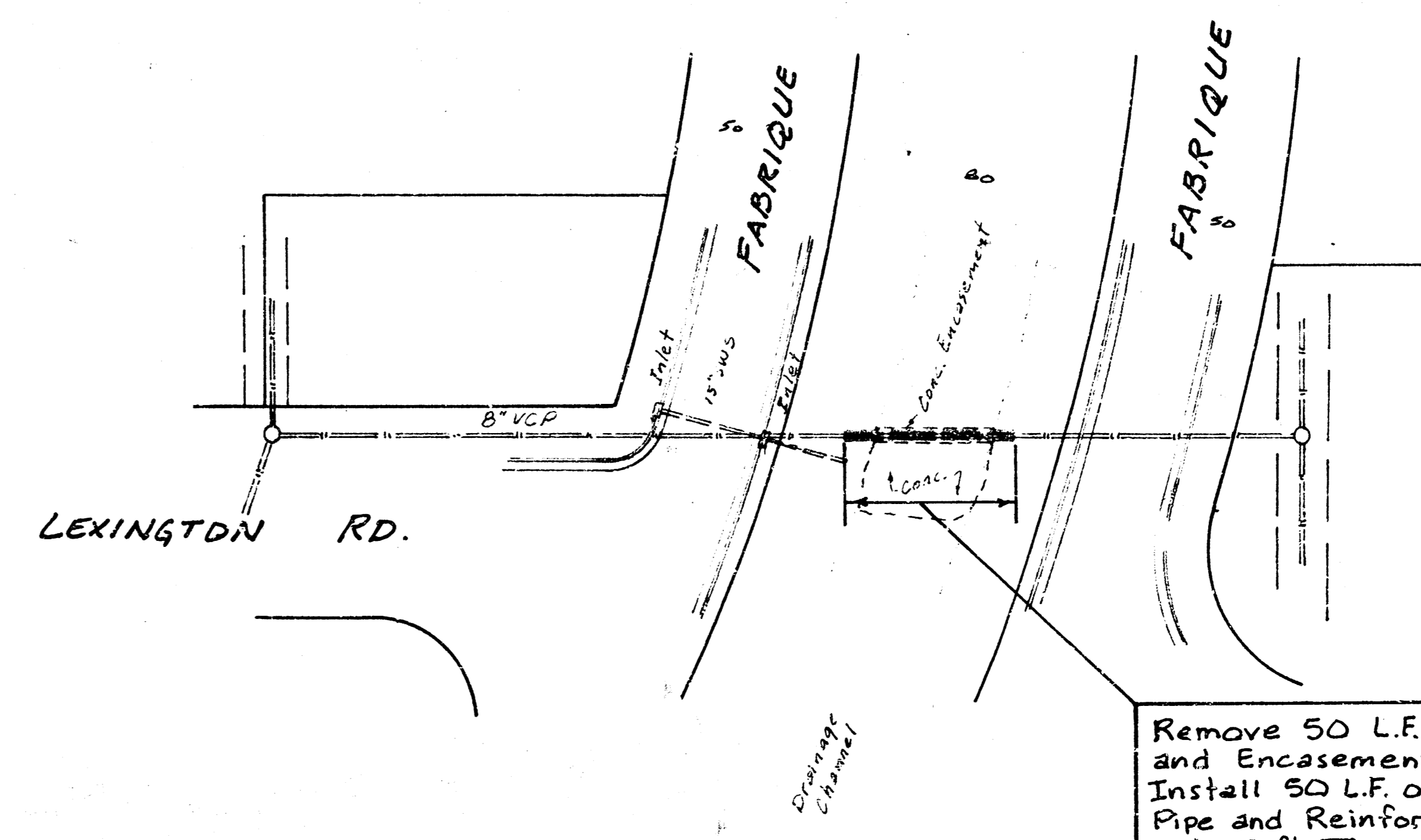
SCALE 1"=40'



CONCRETE TOEWALL DETAIL

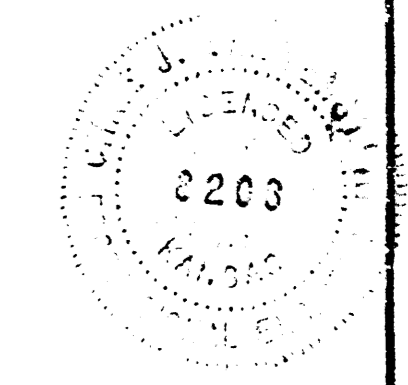
Remove 40 L.F. of Existing Pipe and Encasement. Install 40 L.F. of 8" Lined Ductile Iron Pipe and Reinforced Concrete Encasement with 3 ft. Toewall.

SCALE 1"=40'



Remove 50 L.F. of Existing Pipe and Encasement. Install 50 L.F. of 8" Lined Ductile Iron Pipe and Reinforced Concrete Encasement with 3 ft. Toewall.

NOTE: ALL CREEK CROSSING REPAIRS TO BE CENTERED ON EXISTING CHANNELS.



PROJECT DESCRIPTION
1991 SANITARY SEWER RECONSTRUCTION OR REHABILITATION PROGRAM - Part 2
PROJECT NUMBER
INDEX No. 630491