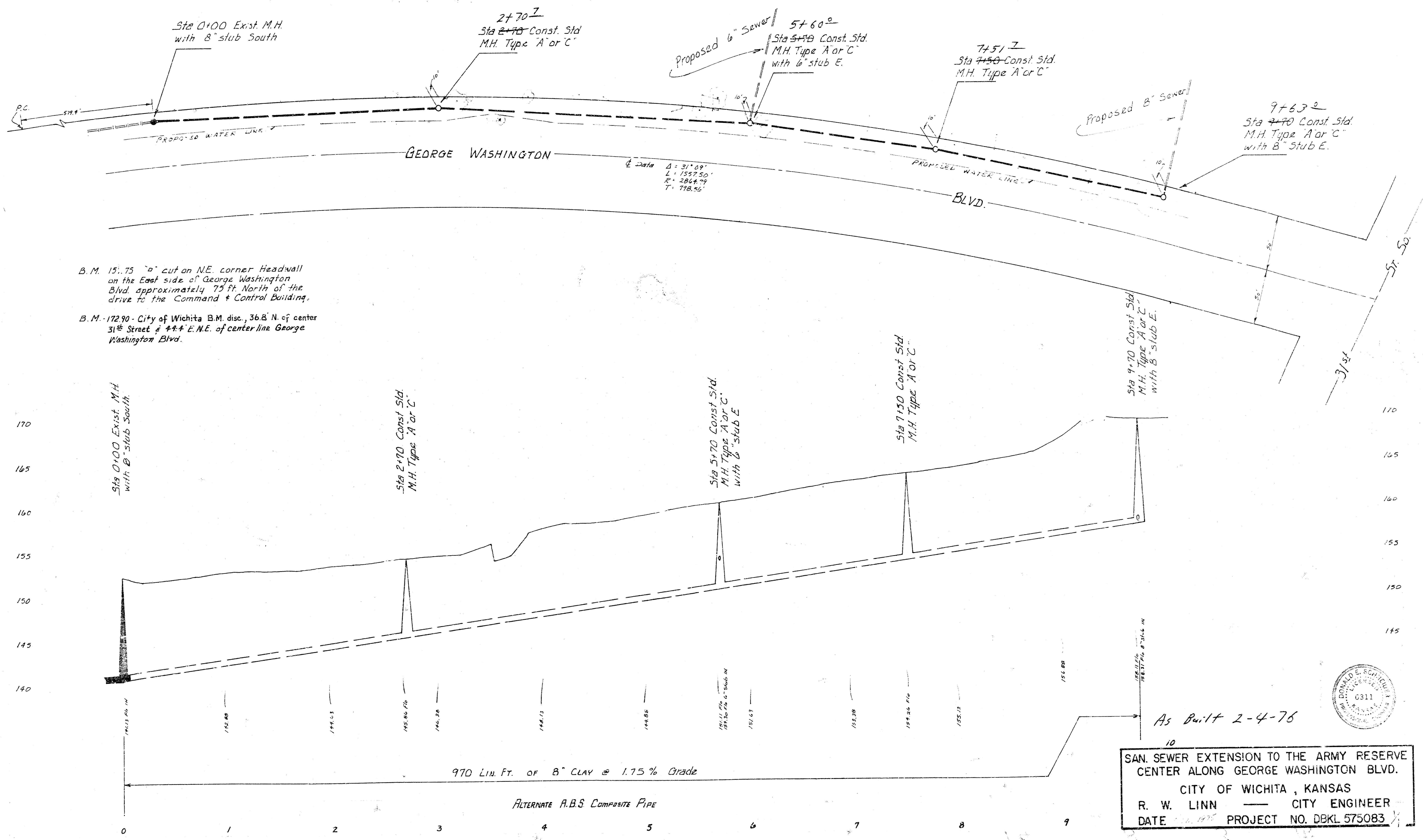


Scale Plan 1"=40'
Profile 1"=10' Horiz.
1"=5' Vert.

L.S. & Loomis



B.M. 15.75 "0" cut on N.E. corner Headwall on the East side of George Washington Blvd approximately 75 ft North of the drive to the Command & Control Building.

B.M. 17290 - City of Wichita B.M. disc, 36 B' N. of center 31st Street & 44.4' E.N.E. of center line George Washington Blvd.

Curve Data
 $\Delta = 91^{\circ} 09'$
 $L = 1557.50'$
 $R = 2864.79'$
 $T = 718.56'$

As Built 2-4-76

10

SAN SEWER EXTENSION TO THE ARMY RESERVE CENTER ALONG GEORGE WASHINGTON BLVD.
 CITY OF WICHITA, KANSAS
 R. W. LINN — CITY ENGINEER
 DATE 2/4/76 PROJECT NO. DBKL 575083

