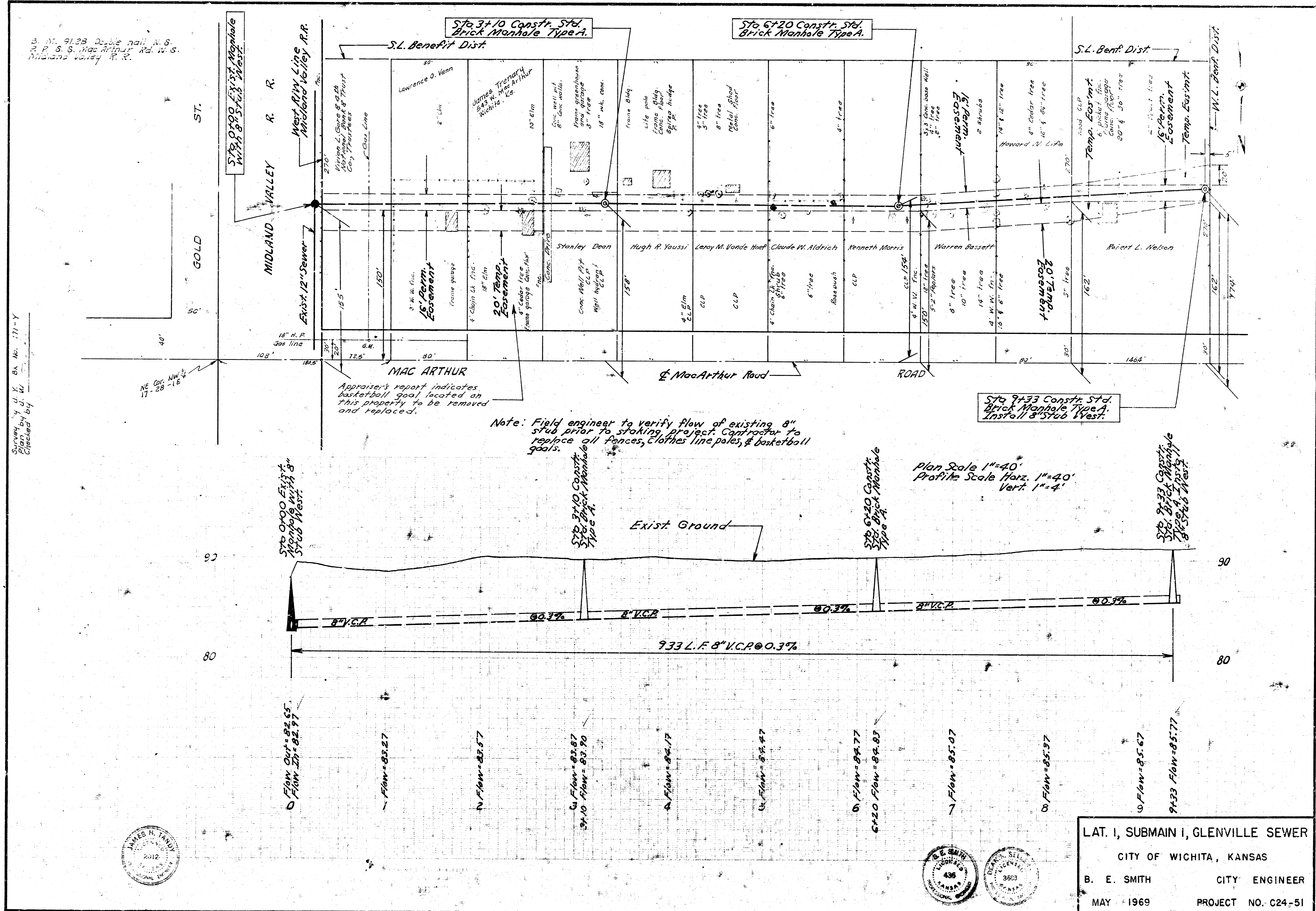


3. N. 91.23 23.22 rail N.S.
 2. P. S. S. MacArthur Rd. W.S.
 Midland Valley R.R.

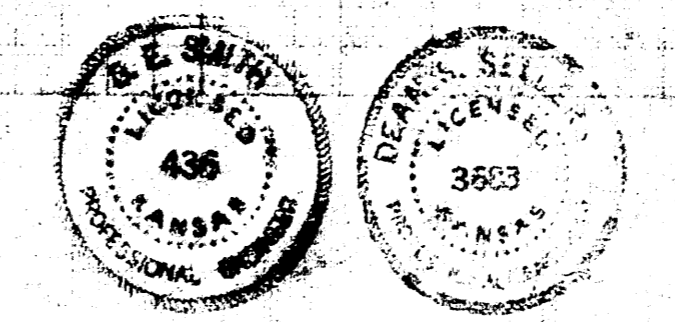
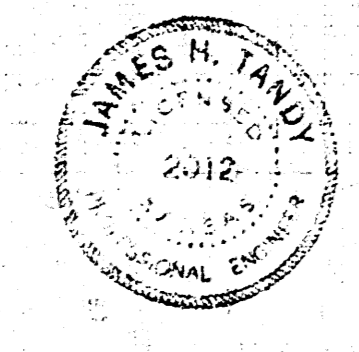
Survey by J. V. Ba. No. 171-Y
 Plan by J. W.
 Checked by



Appraiser's report indicates basketball goal located on this property to be removed and replaced.

Note: Field engineer to verify flow of existing 8" stub prior to staking project. Contractor to replace all fences, clothes line poles, & basketball goals.

Plan Scale 1"=40'
 Profile Scale Horz. 1"=40'
 Vert. 1"=4'



LAT. I, SUBMAIN I, GLENVILLE SEWER
 CITY OF WICHITA, KANSAS
 B. E. SMITH CITY ENGINEER
 MAY 1969 PROJECT NO. C24-51