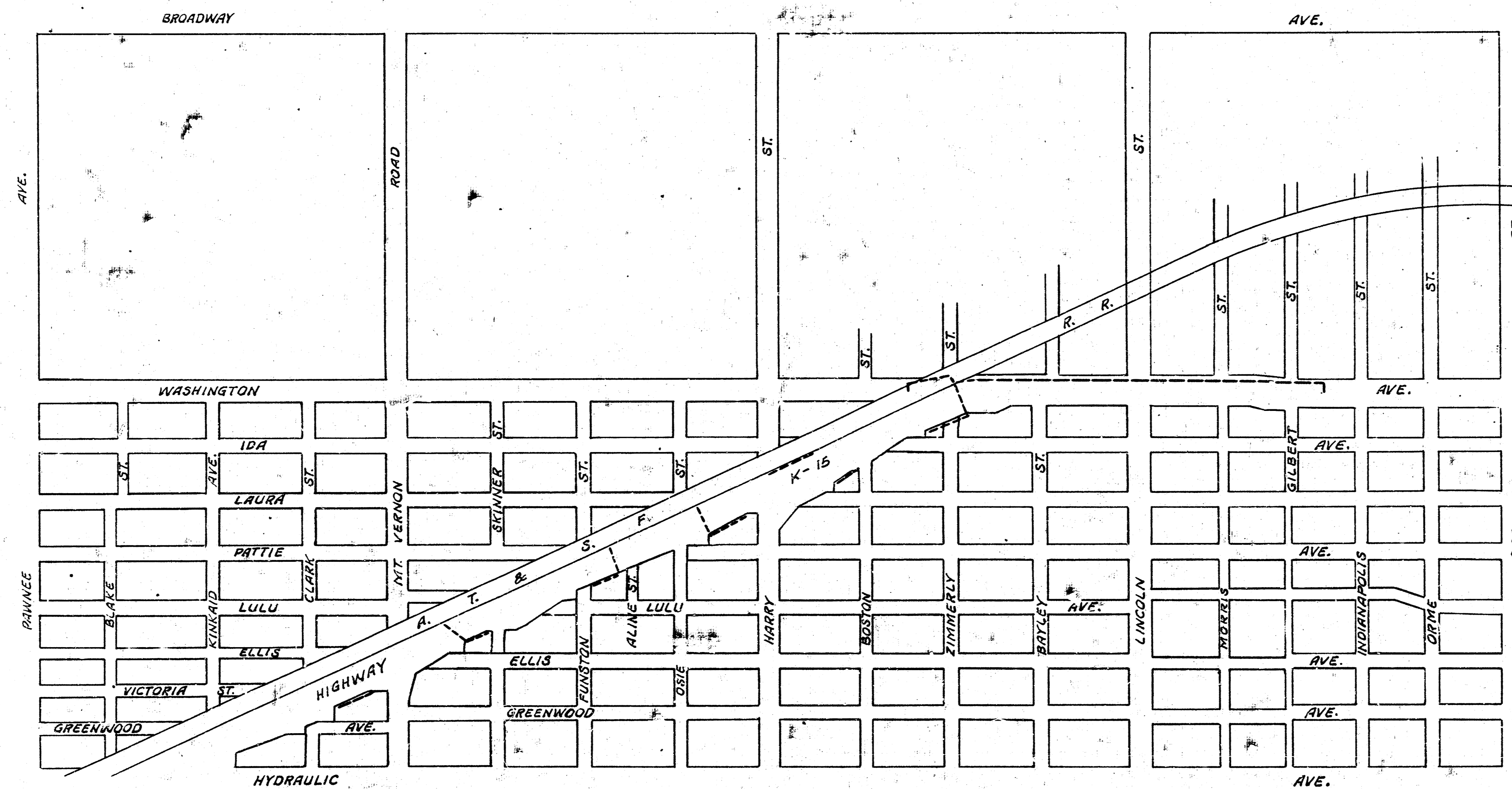


PLAN FOR  
MOVING AND ADJUSTING PIPE LINES  
IN CONNECTION WITH IMPROVEMENT OF  
**HIGHWAY K-15**  
HYDRAULIC AVE. TO GILBERT ST.

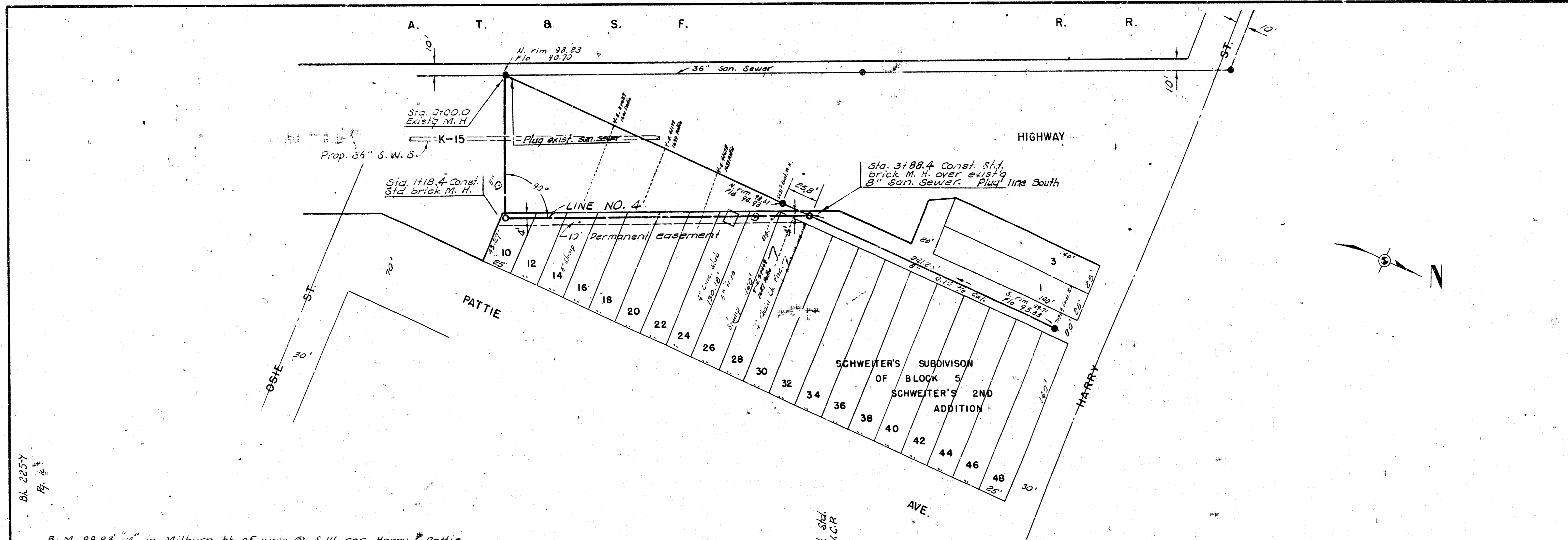
CITY OF WICHITA, KANSAS

B. E. SMITH CITY ENGINEER

PROJECT NO. C6-5

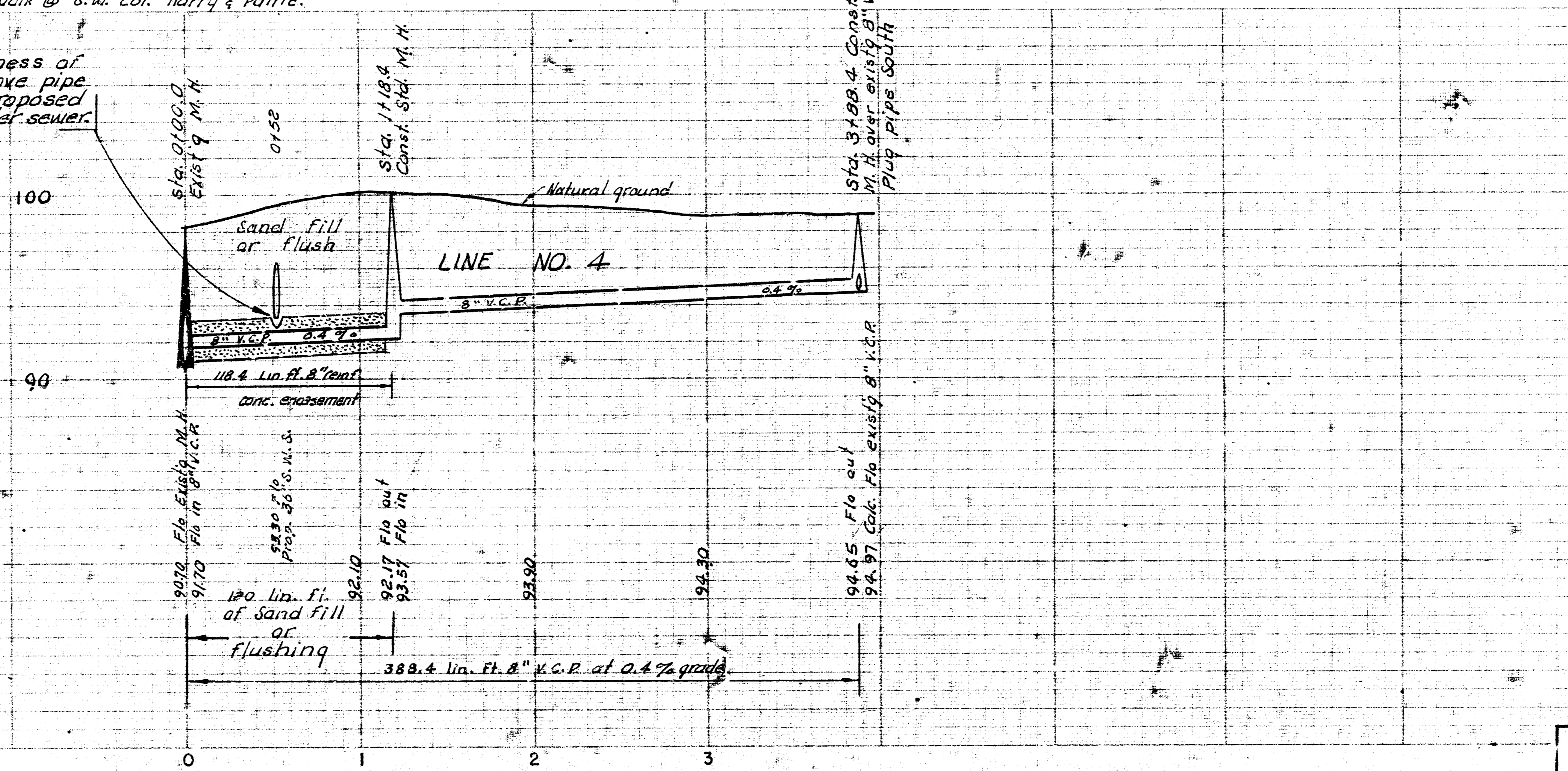




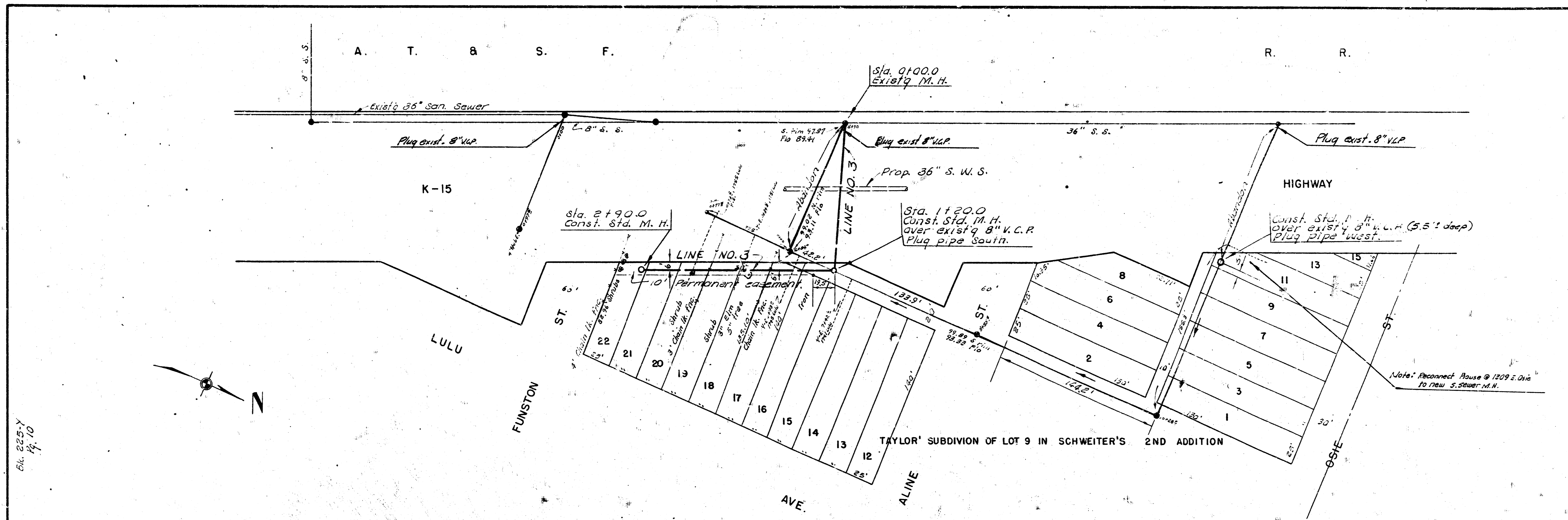


B. M. 99.83 "1" in Milburn bk of walk @ S.W. cor. Harry & Pattie.

**NOTE:**  
Decrease thickness of encasement above pipe to 4" under proposed 36" storm water sewer.

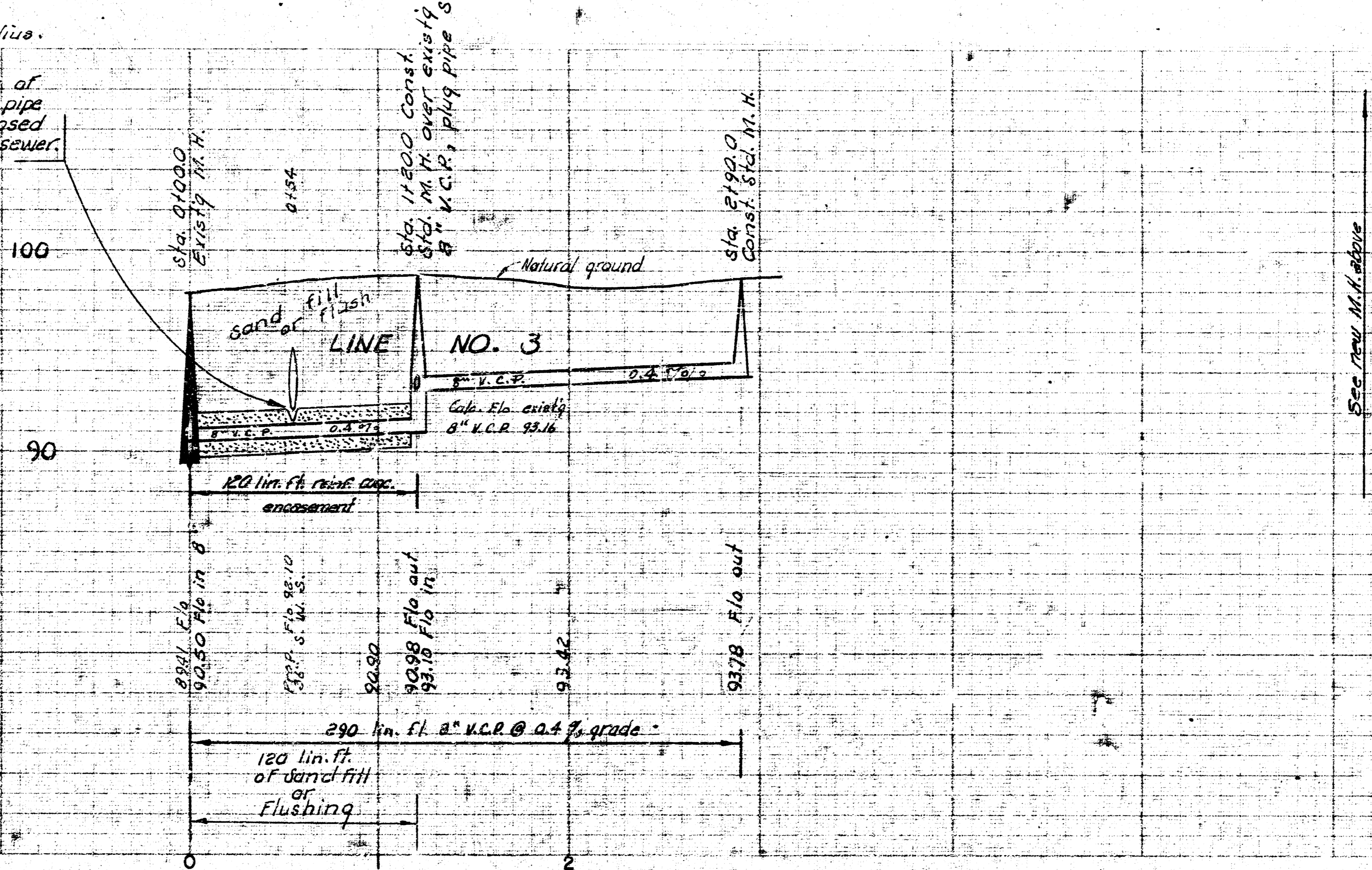


MOVING AND ADJUSTING PIPE LINES  
IN CONNECTION WITH IMPROVEMENT OF  
HIGHWAY K-15  
HYDRAULIC AVE. TO GILBERT ST.  
PROJECT NO. C6-5  
SHEET NO. 4 OF 8



B.M. 99.77 4" in Globe N. of Funston @ EL Lulu on E end radius.

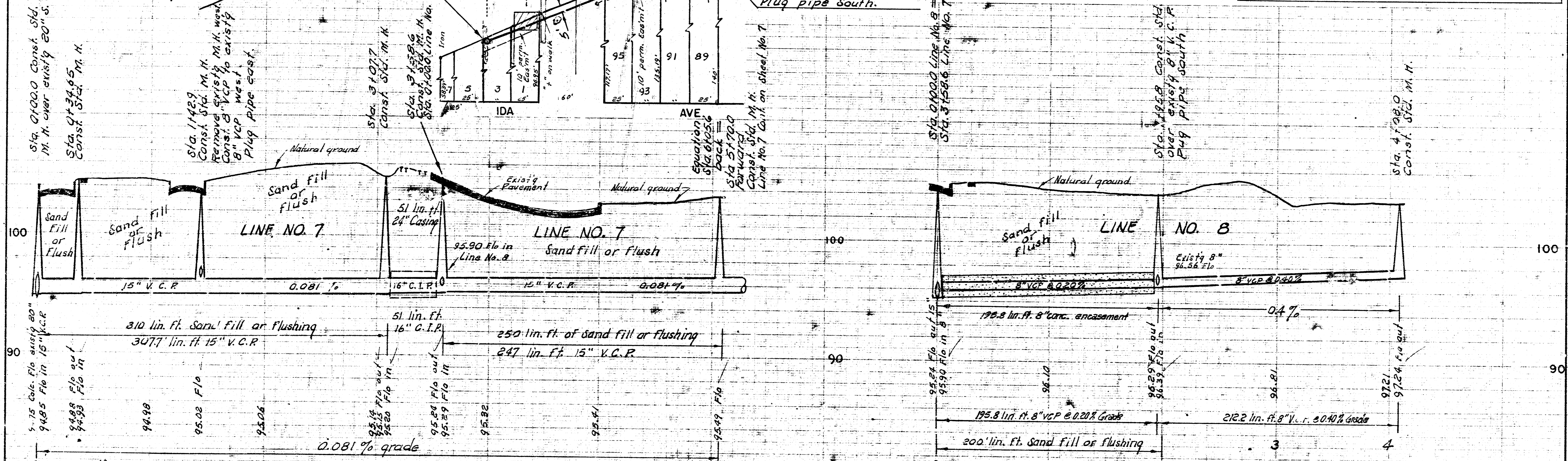
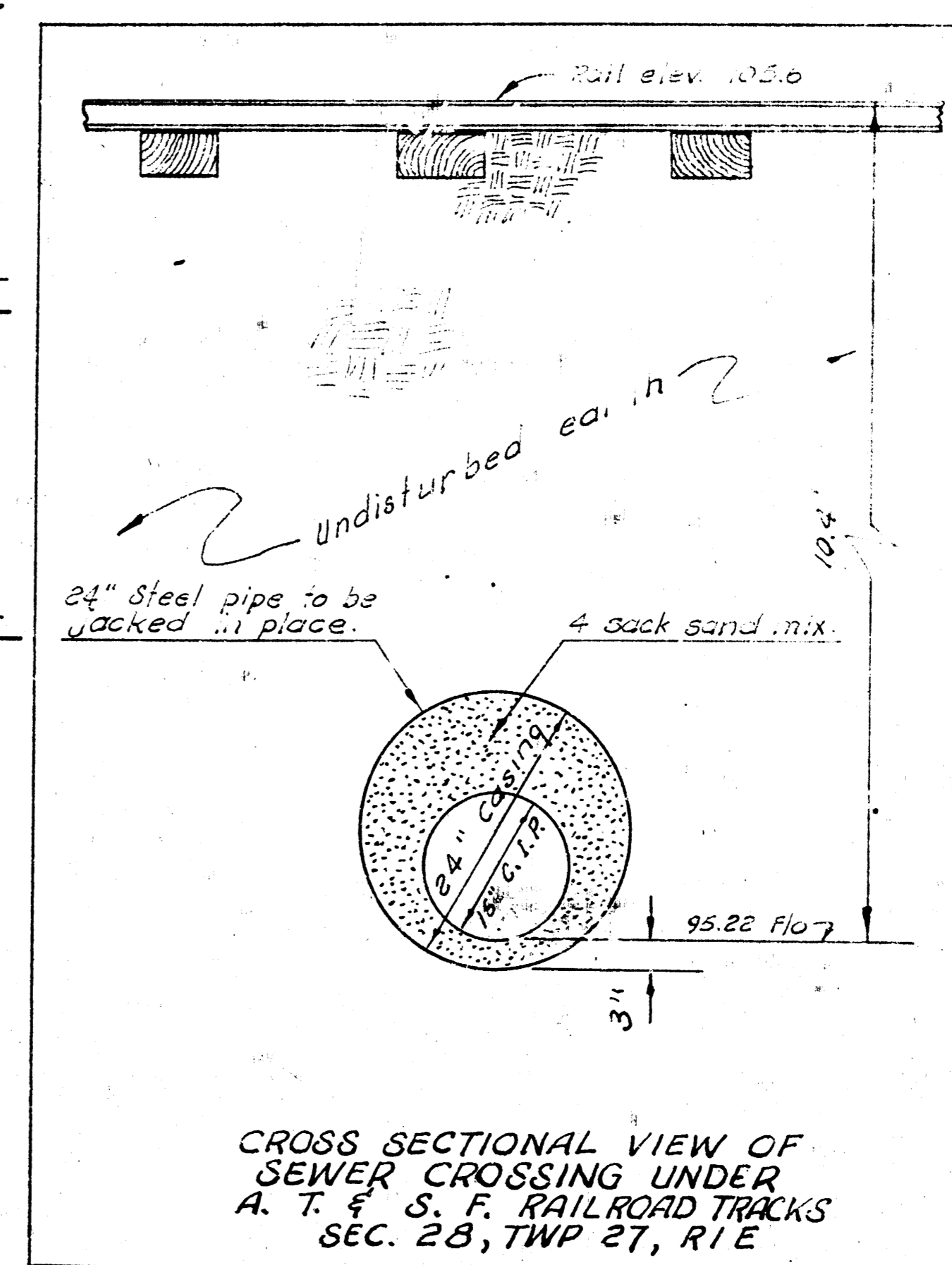
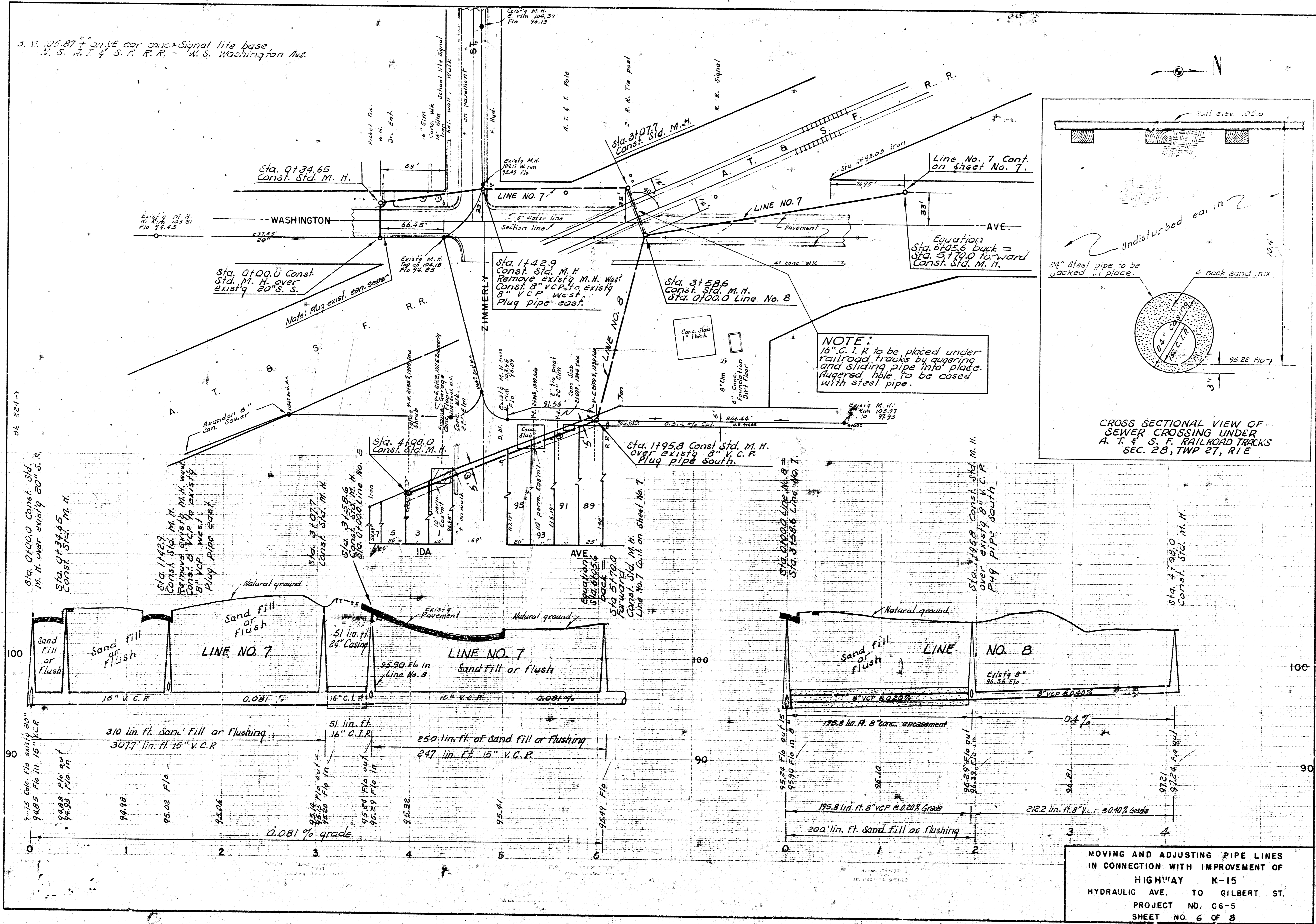
NOTE:  
Decrease thickness of encasement above pipe to 4" under proposed 36" storm water sewer.

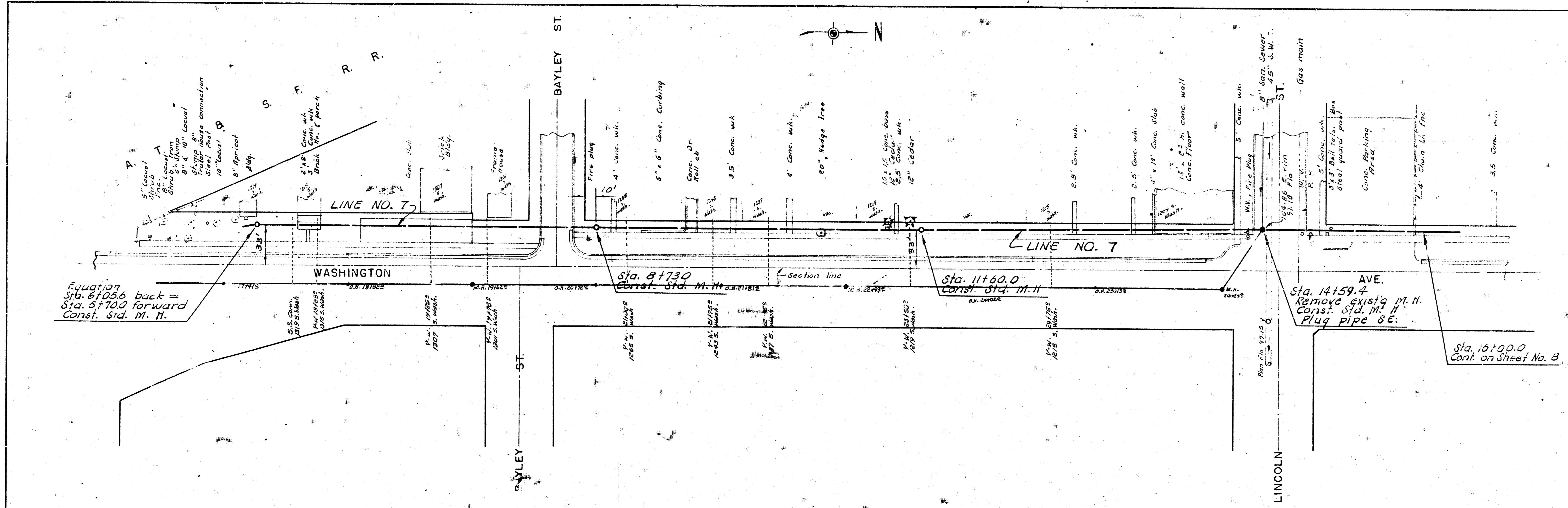


MOVING AND ADJUSTING PIPE LINES  
IN CONNECTION WITH IMPROVEMENT OF  
HIGHWAY K-15  
HYDRAULIC AVE. TO GILBERT ST.  
PROJECT NO. C6-5  
SHEET NO. 3 OF 8

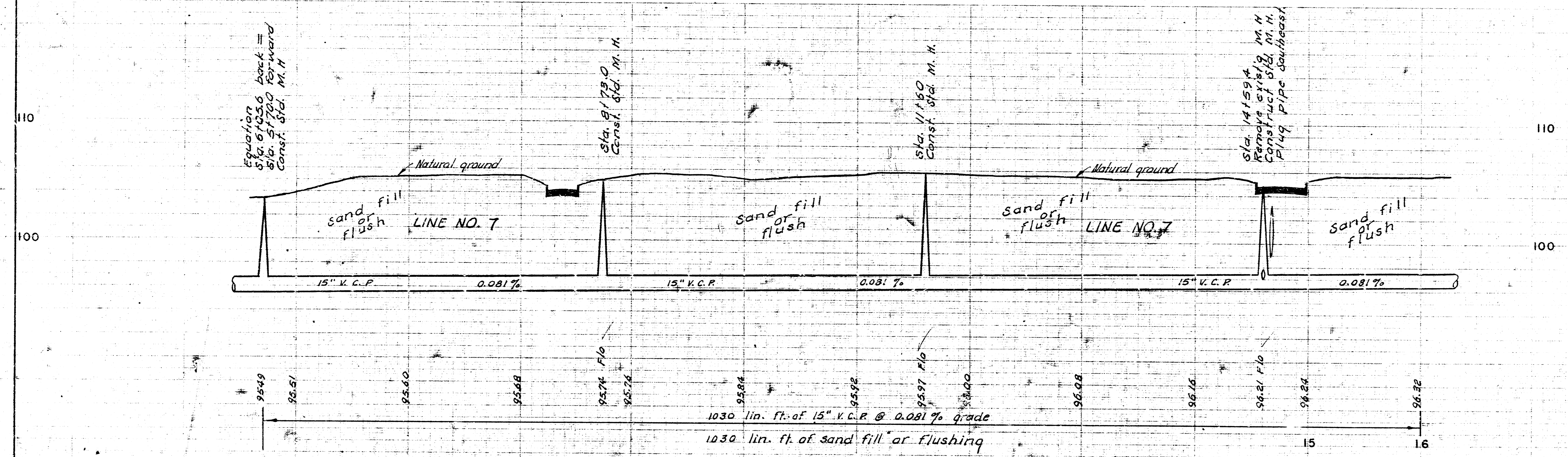


3. 11. 05. 27 + on SE cor conc. Signal lite base  
N. S. A. T. & S. F. R. R. - W. S. Washington Ave.





B. M. 104755 Stand. 325' N. & 34' W. of 1/4 Sec. cor. thimble.



MOVING AND ADJUSTING PIPE LINES  
IN CONNECTION WITH IMPROVEMENT OF  
HIGHWAY K-15  
HYDRAULIC AVE. TO GILBERT ST.  
PROJECT NO. C6-5  
SHEET NO. 7 OF 8

