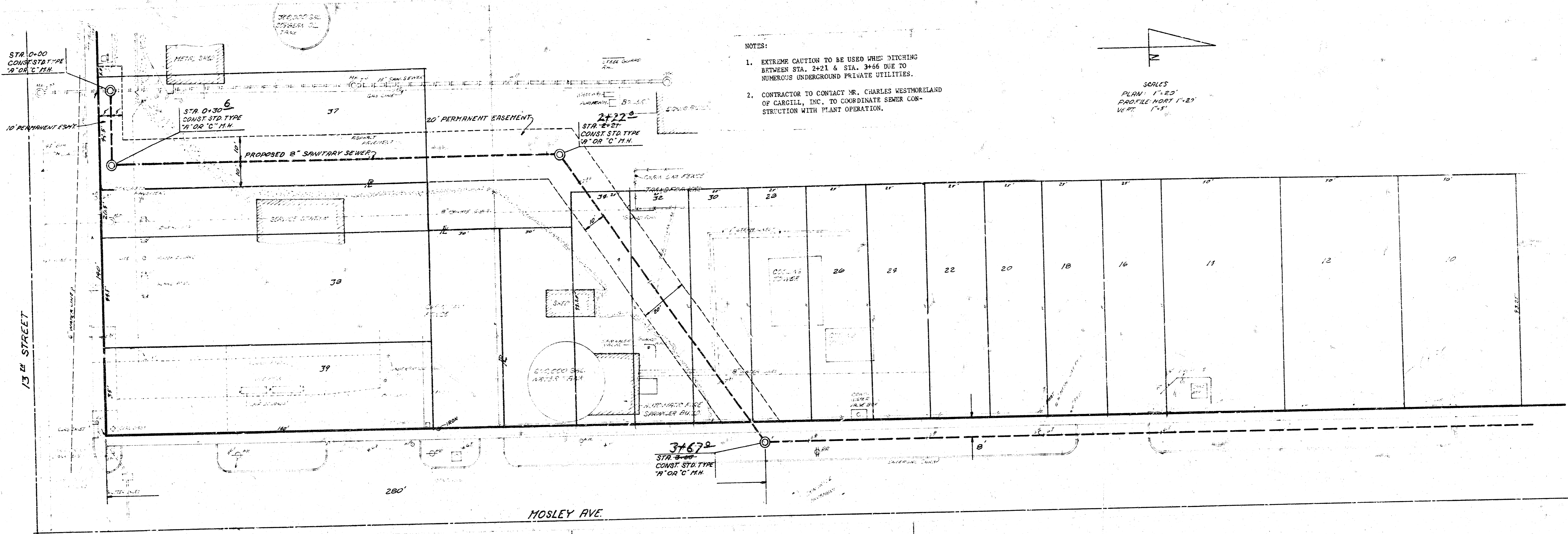
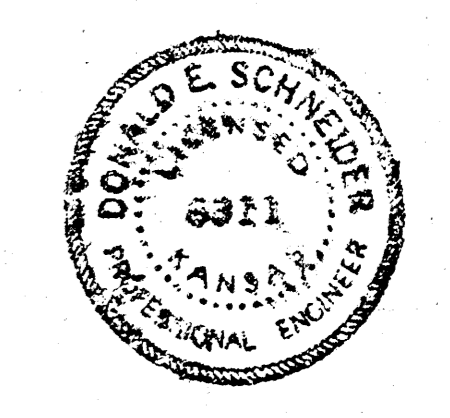
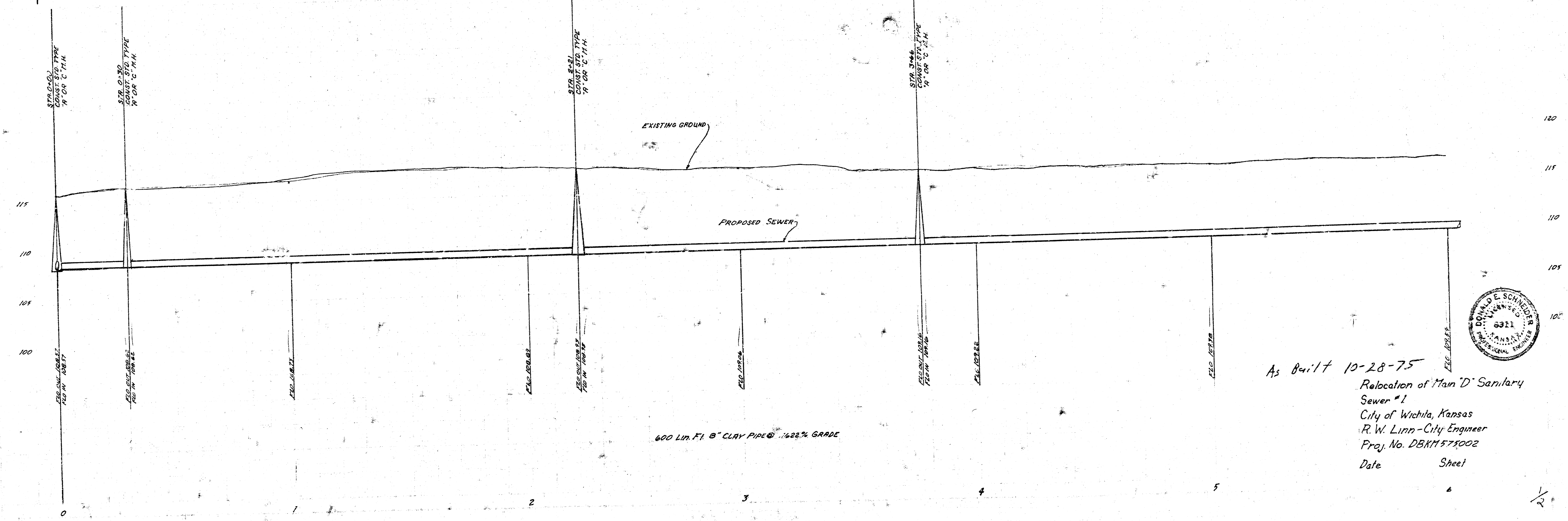


B.M. 116.18 City and 32' S of E 26' W of E Washington 1310



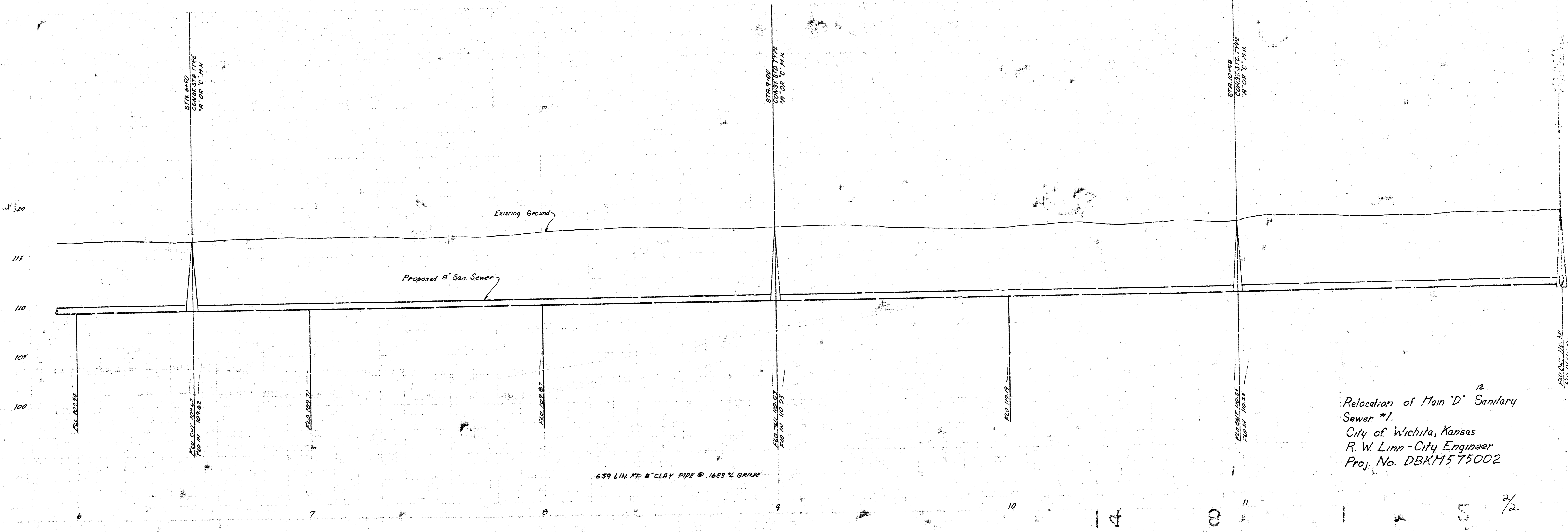
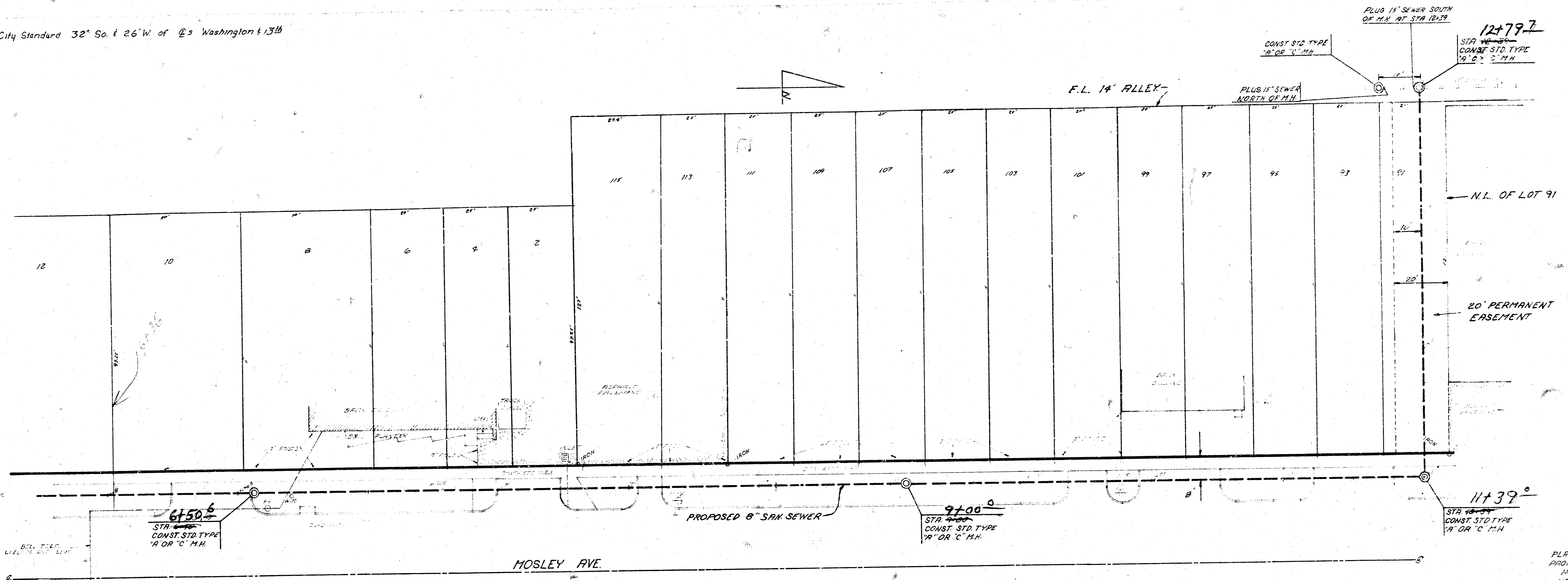
- NOTES:
1. EXTREME CAUTION TO BE USED WHEN DITCHING BETWEEN STA. 2+21 & STA. 3+66 DUE TO NUMEROUS UNDERGROUND PRIVATE UTILITIES.
  2. CONTRACTOR TO CONTACT MR. CHARLES WESTMORELAND OF CARGILL, INC. TO COORDINATE SEWER CONSTRUCTION WITH PLANT OPERATION.

SCALES  
 PLAN: 1"=20'  
 PROFILE: HORIZ 1"=20'  
 VERT: 1"=5'



As Built 10-28-75  
 Relocation of Main 'D' Sanitary Sewer #1  
 City of Wichita, Kansas  
 R.W. Linn - City Engineer  
 Proj. No. DBM1571002  
 Date Sheet

B.M. 116.18 City Standard 32° So. & 26° W. of @'s Washington & 13th



SCALE  
PLAN: 1"=20'  
PROFILE: 1"=20'  
VERT: 1"=5'

Relocation of Main 'D' Sanitary Sewer #1.  
City of Wichita, Kansas  
R. W. Linn - City Engineer  
Proj. No. DBKM575002