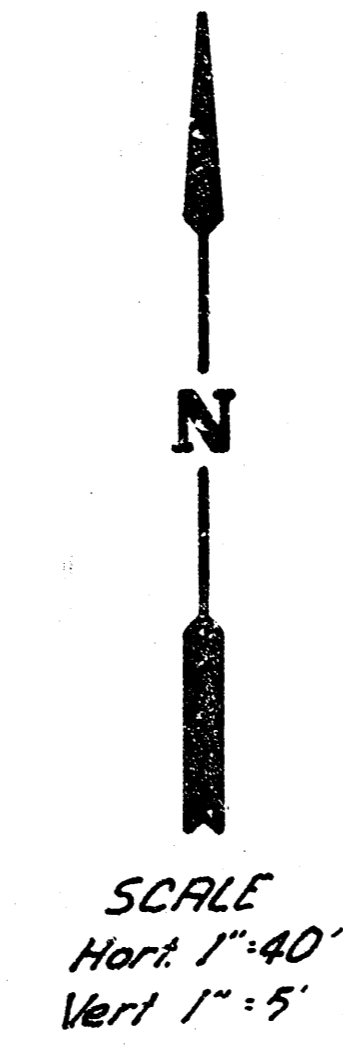
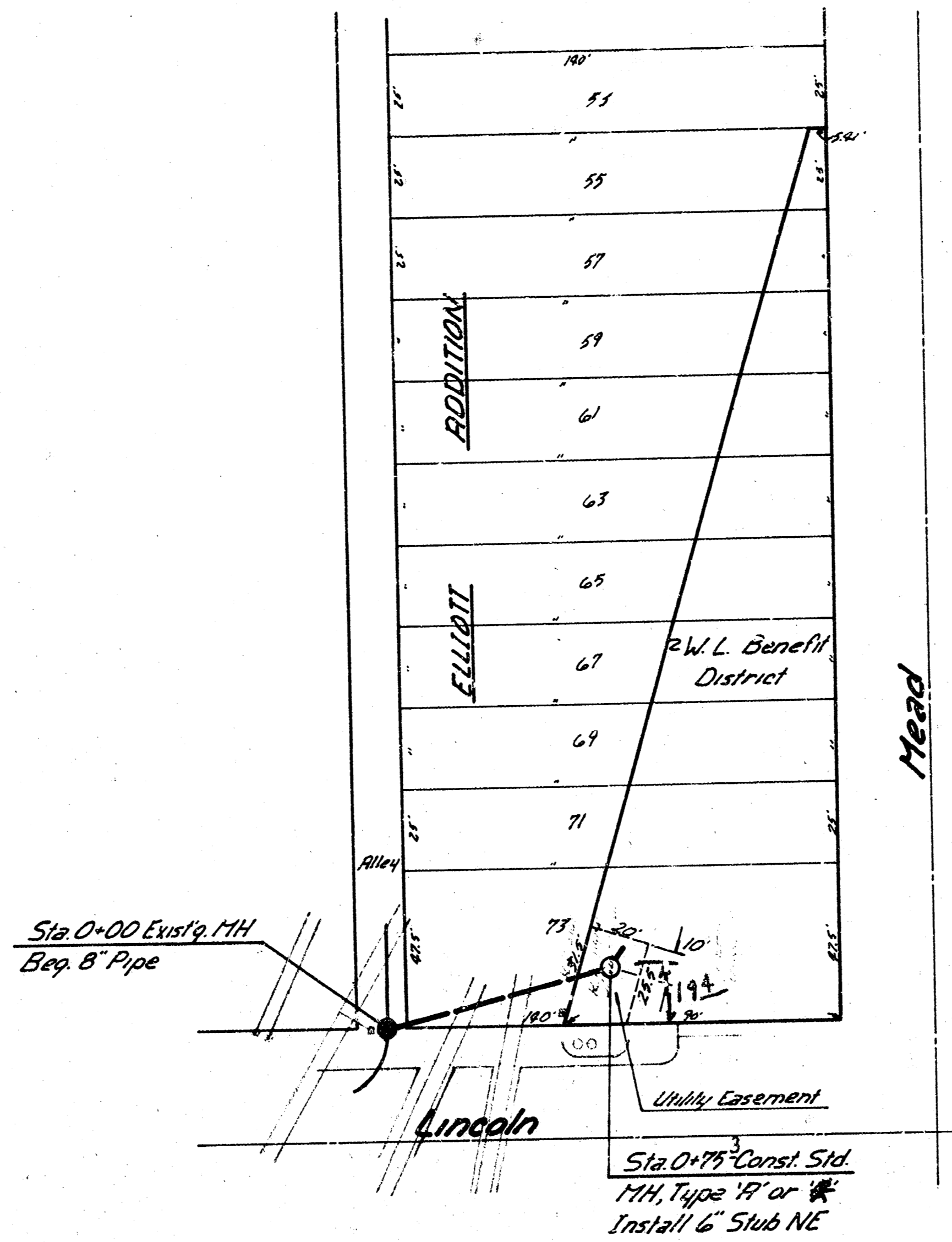
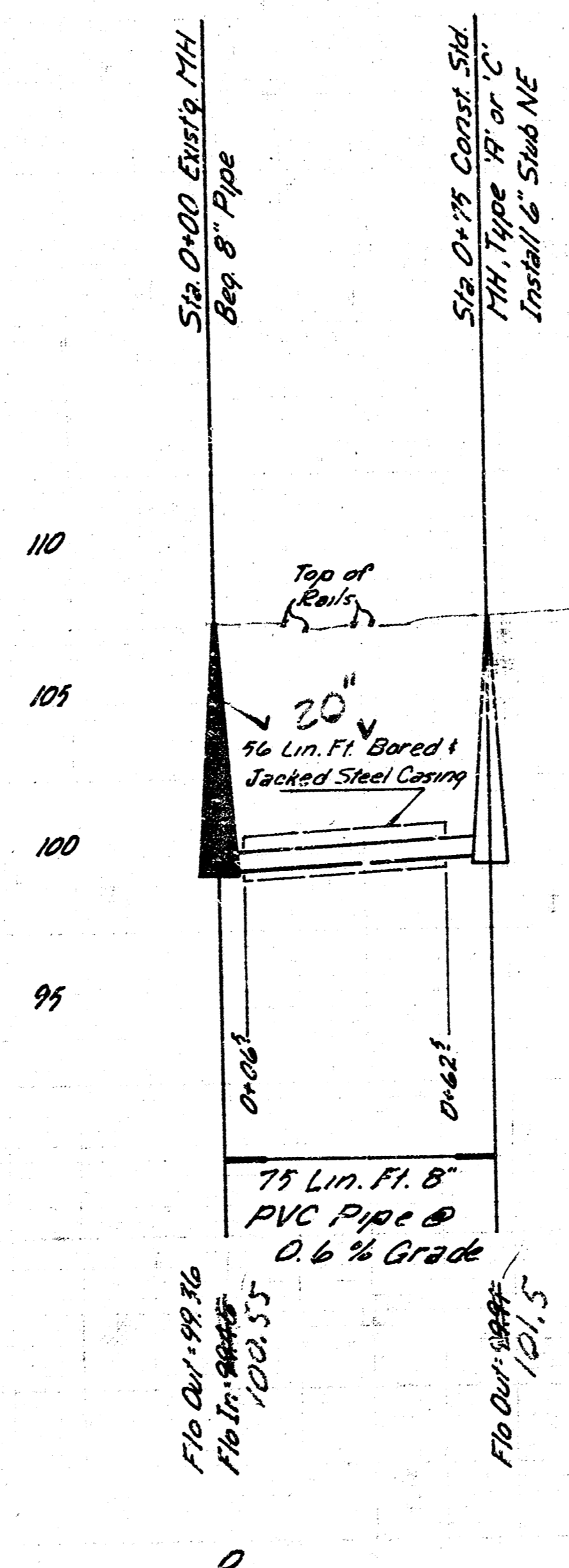


NOTE: CONTRACTOR SHALL NOTIFY SANTA FE RAILROAD COMPANY'S DIVISION OFFICE AT NEWTON, KANSAS, PHONE NO. (316) 233-7505, AT LEAST 48 HOURS PRIOR TO STARTING CONSTRUCTION ON THIS PROJECT.



B.M. 10476 City Sid 32.5 No. + 34' W. of Q's Washington + Lincoln

Size of Casing to be Determined by Contractor, Subject to Standard Construction Methods + Engineer's Approval.



As Built after
2006 J.S.

**Sanitary Sewer Extension to Lat N,
East Submain 'C' at Lincoln St.
Sanitary Sewer No. 1
468-76-245-80824-000-000-001**

City of Wichita, Kansas
Dept. of Public Works - Eng. Div.
Dean S. Sellers - Acting City Engineer

Date _____