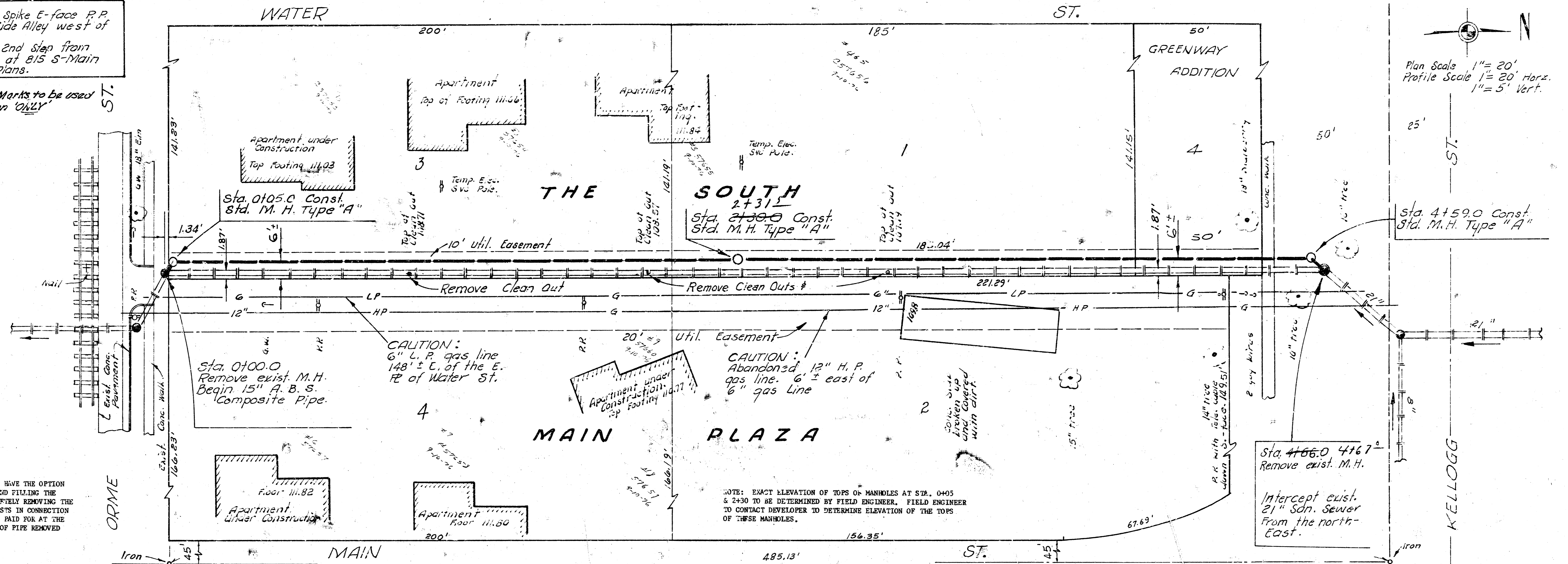


B. M. 109.35 R.R. Spike E-face P.P.
S-Side Orme E-Side Alley west of
Main.
B. M. 110.20 NE cor. 2nd Step from
bottom to House at 815 S-Main
from Main St. Plans.

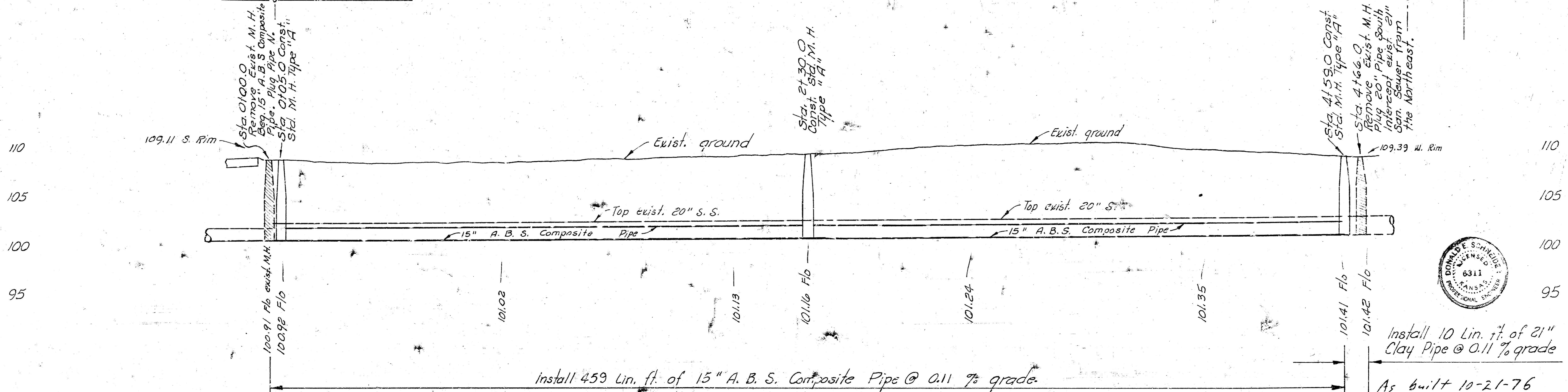
*Note: Bench Marks to be used
on this Plan ONLY



Plan Scale 1" = 20'
Profile Scale 1" = 20' Horiz.
1" = 5' Vert.

NOTE: CONTRACTOR SHALL HAVE THE OPTION
BETWEEN PLUGGING AND SAND FILLING THE
ABANDONED PIPE OR COMPLETELY REMOVING THE
ABANDONED PIPE. ALL COSTS IN CONNECTION
WITH THIS WORK SHALL BE PAID FOR AT THE
PRICE BID PER LIN. FT. OF PIPE REMOVED
OR SAND FILLED.

NOTE: EXACT ELEVATION OF TOPS OF MANHOLES AT STA. 0405
& 2430 TO BE DETERMINED BY FIELD ENGINEER. FIELD ENGINEER
TO CONTACT DEVELOPER TO DETERMINE ELEVATION OF THE TOPS
OF THESE MANHOLES.



install 459 Lin. ft. of 15" A. B. S. Composite Pipe @ 0.11 % grade.

Install 10 Lin. ft. of 21" Clay Pipe @ 0.11 % grade

As built 10-21-76

RECONSTRUCTION OF A PART OF
MAIN A, SAN SEWER NO. 1
BETWEEN MAIN ST. AND WATER ST.
FROM ORME ST. TO KELLOGG ST.
CITY OF WICHITA, KANSAS
R. W. LINN — CITY ENGINEER
JUNE 1976 PROJECT NO. DBKMS 76 032

FILMED FROM THE BEST AVAILABLE COPY