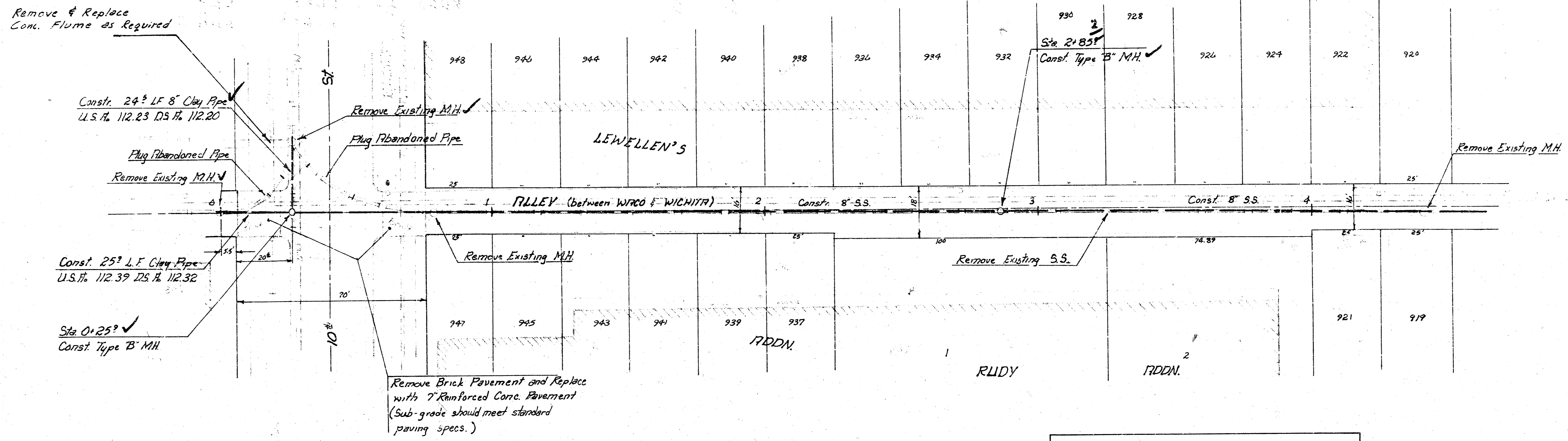


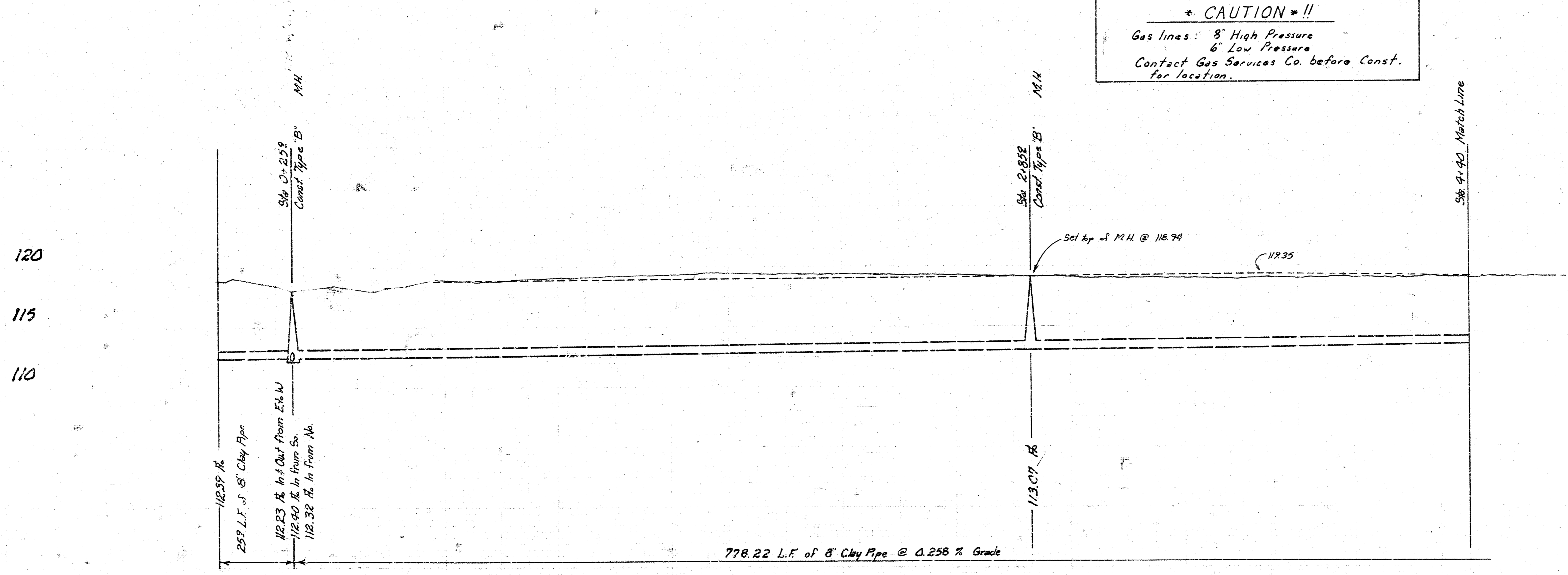
NOTE: CONTRACTOR'S METHOD FOR HANDLING SEWAGE FLOWS DURING CONSTRUCTION OF THIS PROJECT SHALL BE APPROVED BY THE ENGINEER.

B.M. 117.39 R.R. Spk. NW face of Tele. Pole = 305' So. of E. of 8th St. E. of WACO.



*** CAUTION * !!**
 Gas lines: 8" High Pressure
 6" Low Pressure
 Contact Gas Services Co. before Const. for location.

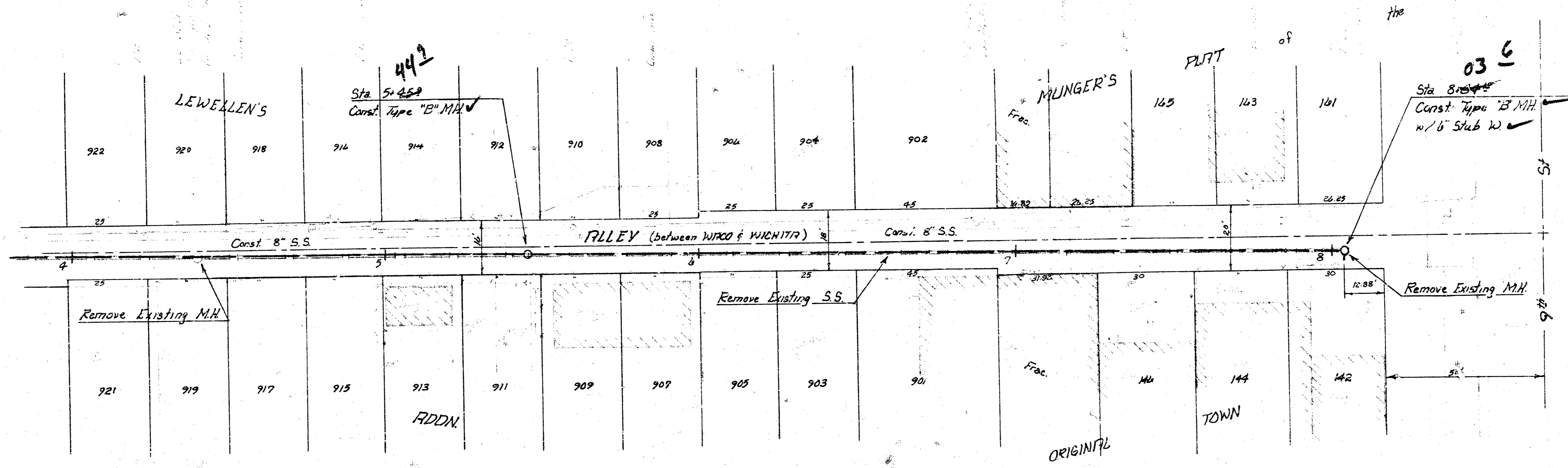
* SCALE *
 PLAN 1" = 20'
 PROFILE 1" = 5'



As Built
 10/51



Reconstruct a portion of Lat. N. & S. W. Submain R., S.S.#1 in the Alley between Waco & Wichita from 9th to 10th
 City of WICHITA, KANSAS
 R.W. Bruggeman - City Engineer
 DATE _____ Sheet 1 of 2
 Proj. No.: 542-80-245-80006-000-000-001



SCALE
 PLAN 1" = 20'
 PROFILE 1" = 20'
 Vert. 1" = 5'

