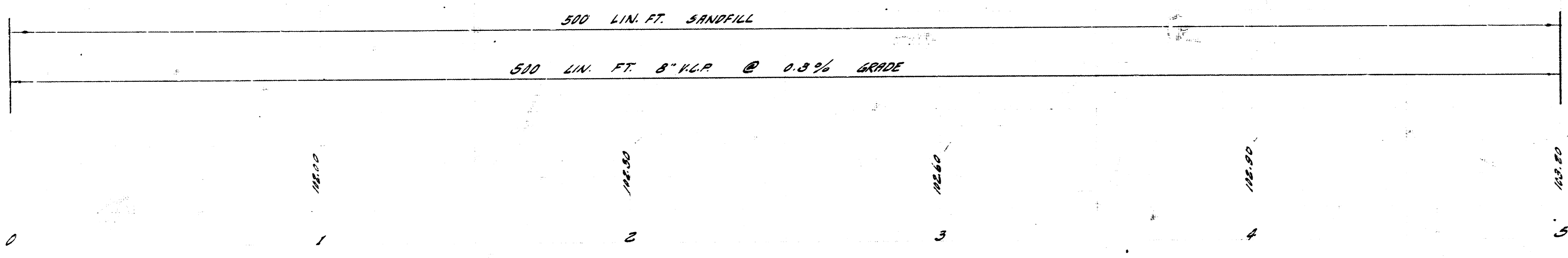
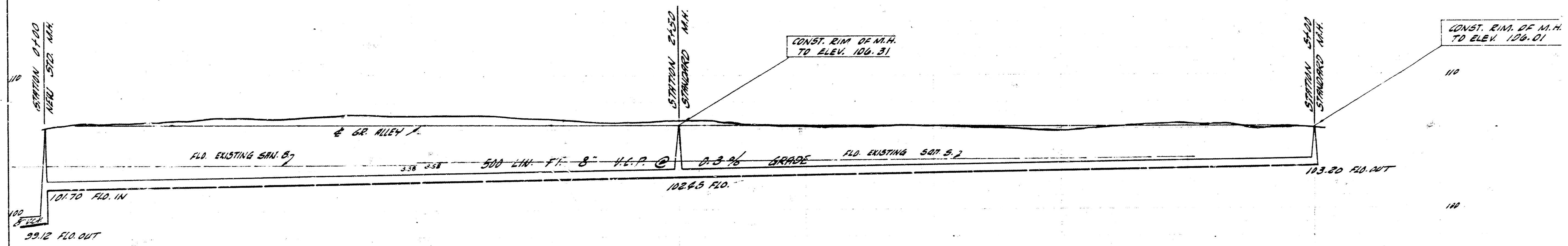


S.M. 106.78 2" IN DIA. OF SOUTH WALK WATERMAN & ALLEY NORTH.
 S.M. 107.13 7" DIA. NORTH CO. WATERMAN & ALLEY SO.



PLAN SCALE 1"=20'
 PROFILE SCALE 1"=20' HOR., 1"=4' VERT.



RECONSTRUCTION OF LAT. 14 S. 5. 4
 CITY OF WICHITA, KANSAS
 B. E. SMITH, CITY ENGINEER
 PROJ. NO. C 29-63 DATE: JULY 1959