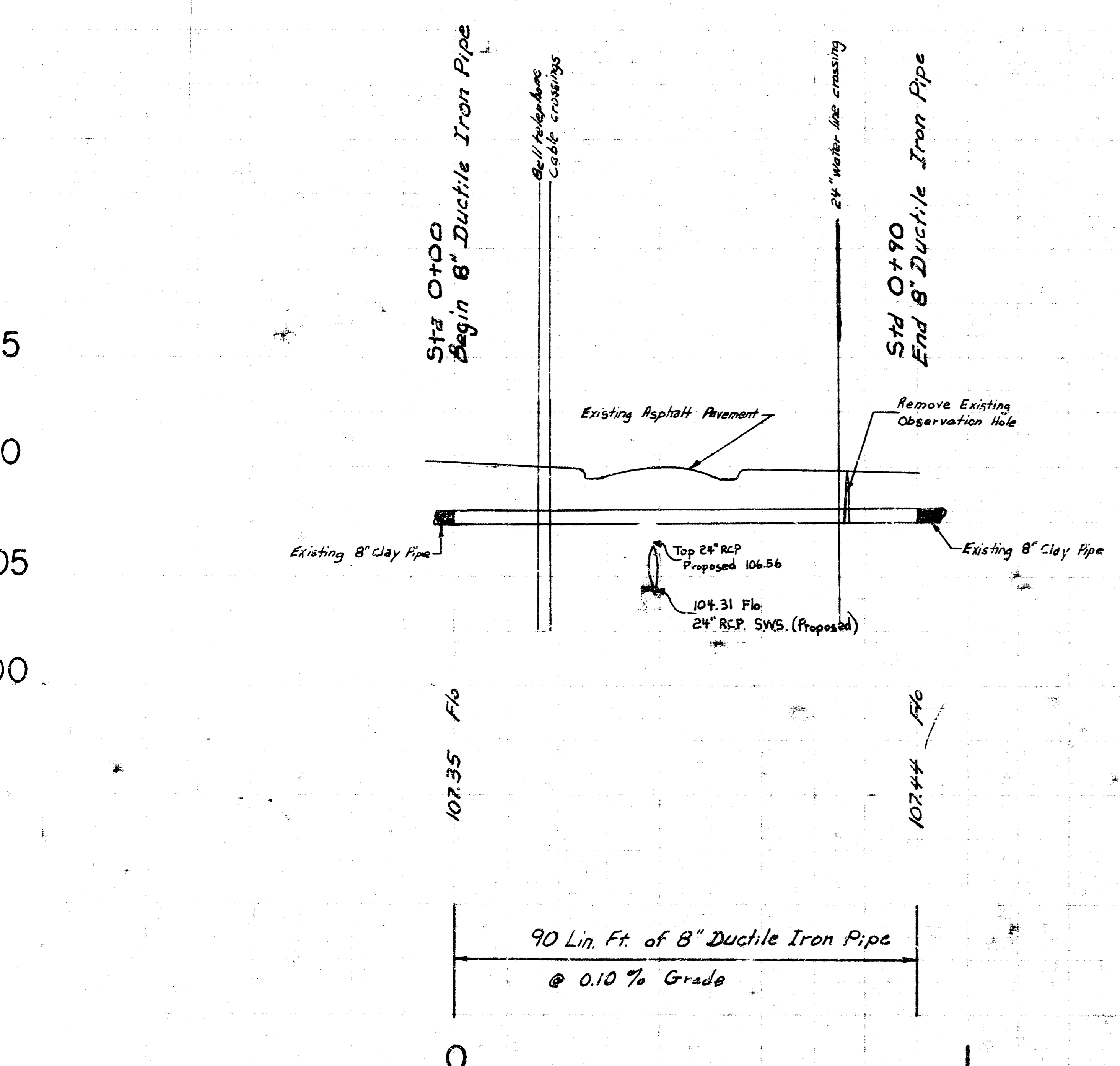
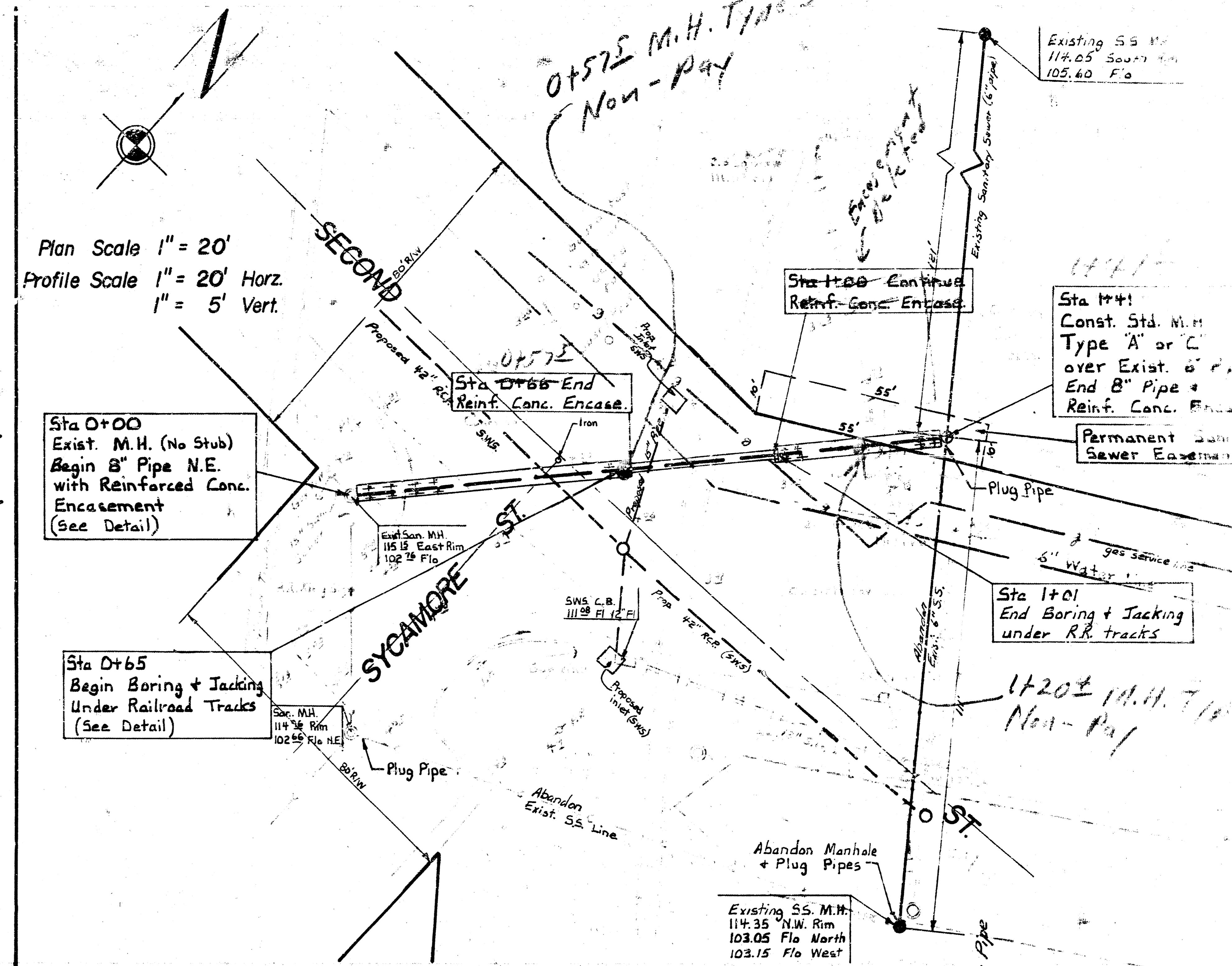


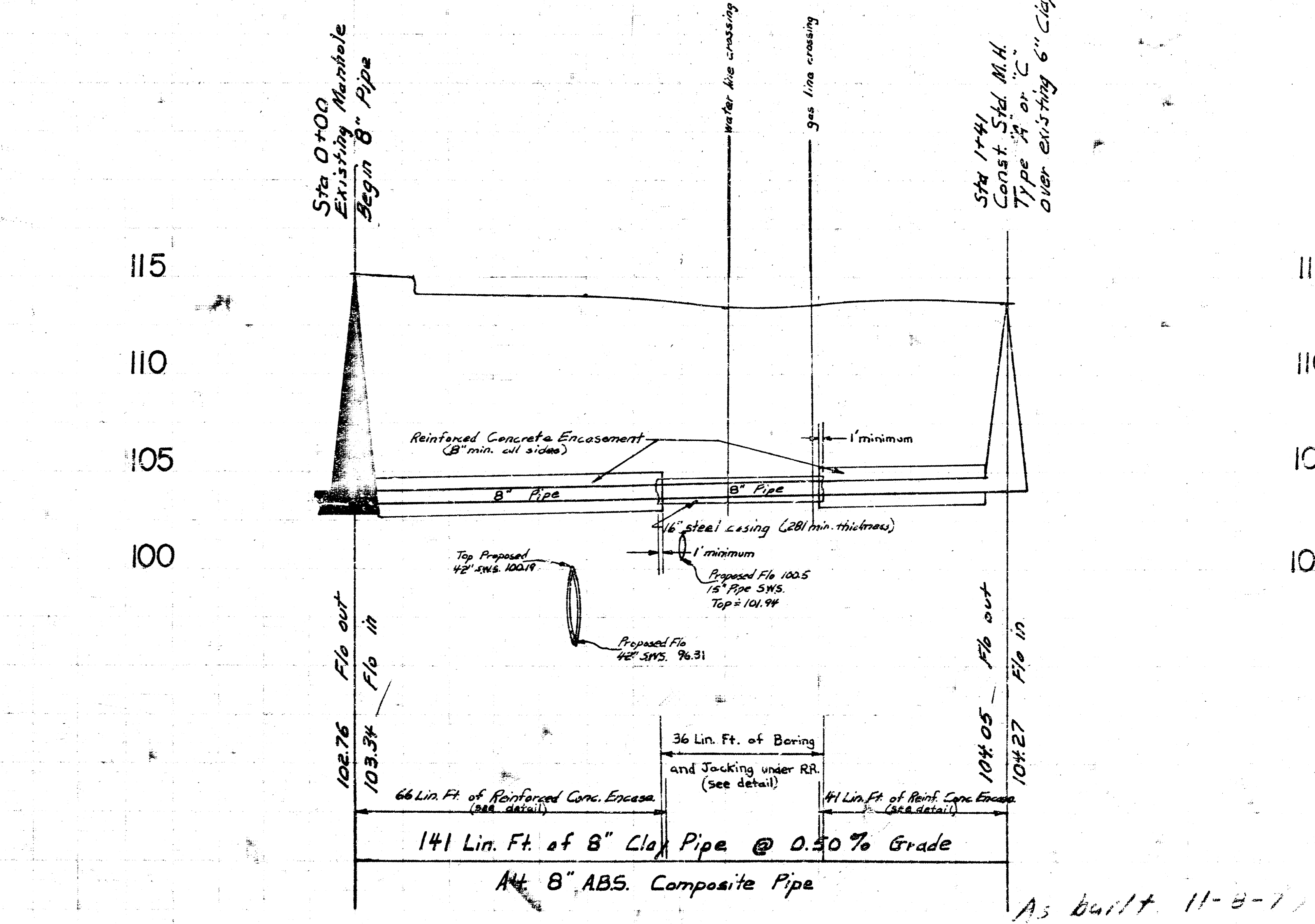
Plan Scale 1" = 20'  
 Profile Scale 1" = 20' Horz.  
 1" = 5' Vert.



Reconstruct a sewer to supplement part of Sanitary Sewer No. 8 and Sanitary Sewer No. 21 in Second Street between McLean & Dodge  
 CITY OF WICHITA, KANSAS  
 R. W. LINN, CITY ENGINEER



Plan Scale 1" = 20'  
 Profile Scale 1" = 20' Horz.  
 1" = 5' Vert.



As built 11-8-71

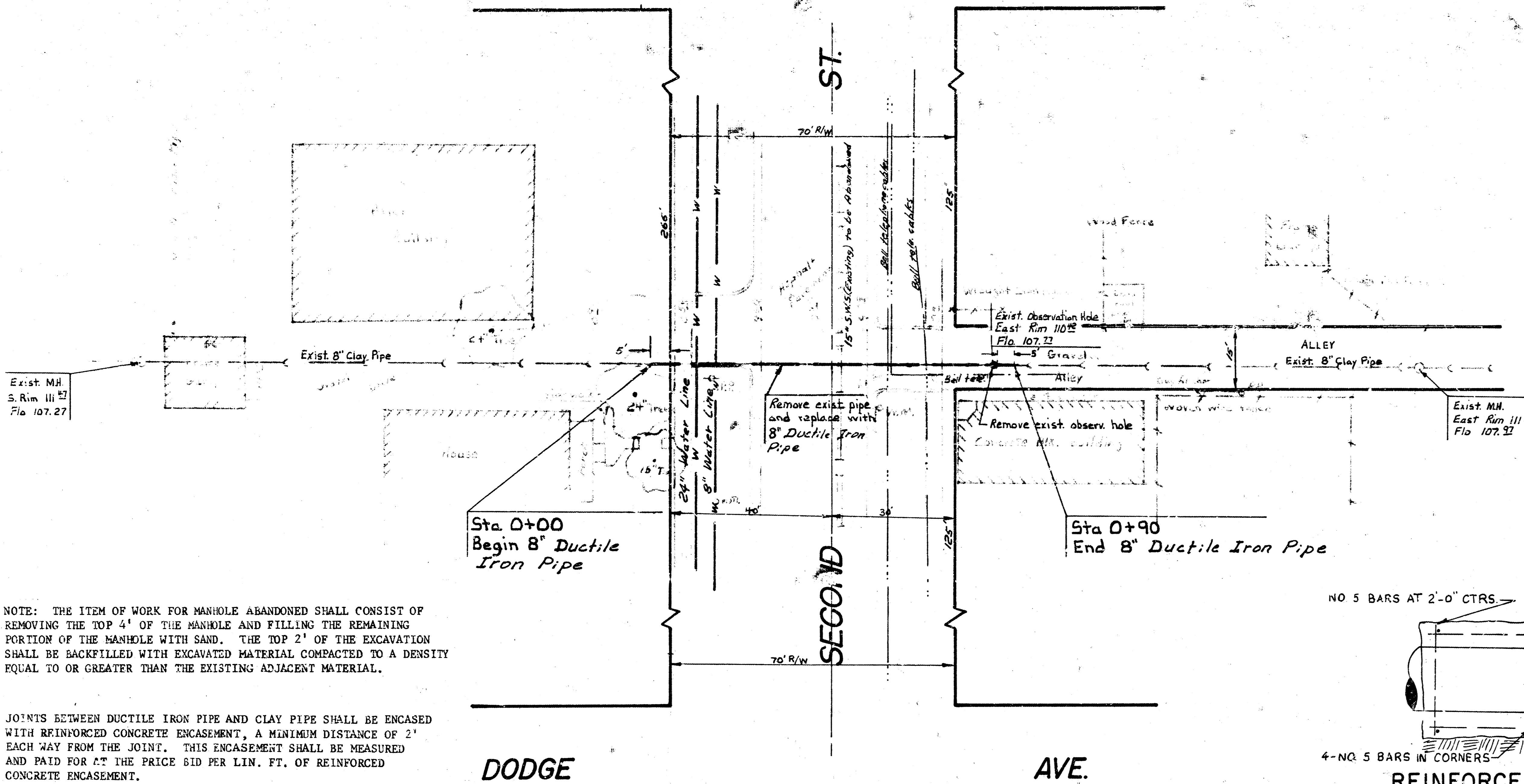
SENECA

STREET

BM 114.45 N. Rim Bell MH. S.S. Second St. approx. 30' W. of NE Corner Watkins Inc. Bldg.

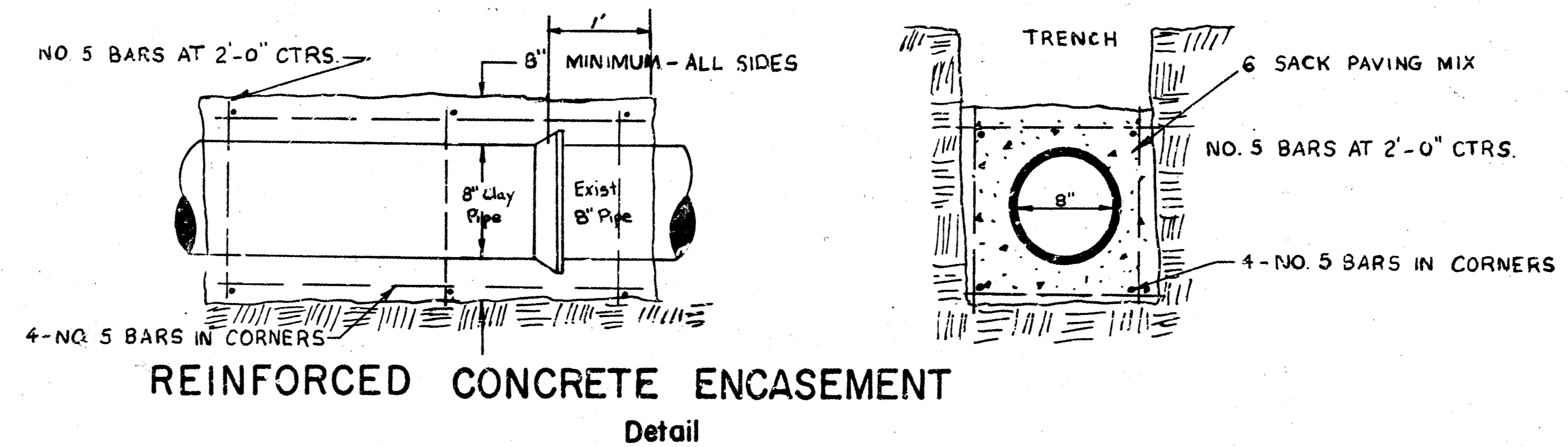
BM 109.70 City Std. S.W. Cor. 2nd & Seneca, Brass Rod 29' W. & 18.5' S. of  $\odot$  Both.

BM 115.46 " " at Top W. Cb. Sycamore 164' S. of  $\odot$  2nd



NOTE: THE ITEM OF WORK FOR MANHOLE ABANDONED SHALL CONSIST OF REMOVING THE TOP 4' OF THE MANHOLE AND FILLING THE REMAINING PORTION OF THE MANHOLE WITH SAND. THE TOP 2' OF THE EXCAVATION SHALL BE BACKFILLED WITH EXCAVATED MATERIAL COMPACTED TO A DENSITY EQUAL TO OR GREATER THAN THE EXISTING ADJACENT MATERIAL.

JOINTS BETWEEN DUCTILE IRON PIPE AND CLAY PIPE SHALL BE ENCASED WITH REINFORCED CONCRETE ENCASEMENT, A MINIMUM DISTANCE OF 2' EACH WAY FROM THE JOINT. THIS ENCASEMENT SHALL BE MEASURED AND PAID FOR AT THE PRICE BID PER LIN. FT. OF REINFORCED CONCRETE ENCASEMENT.

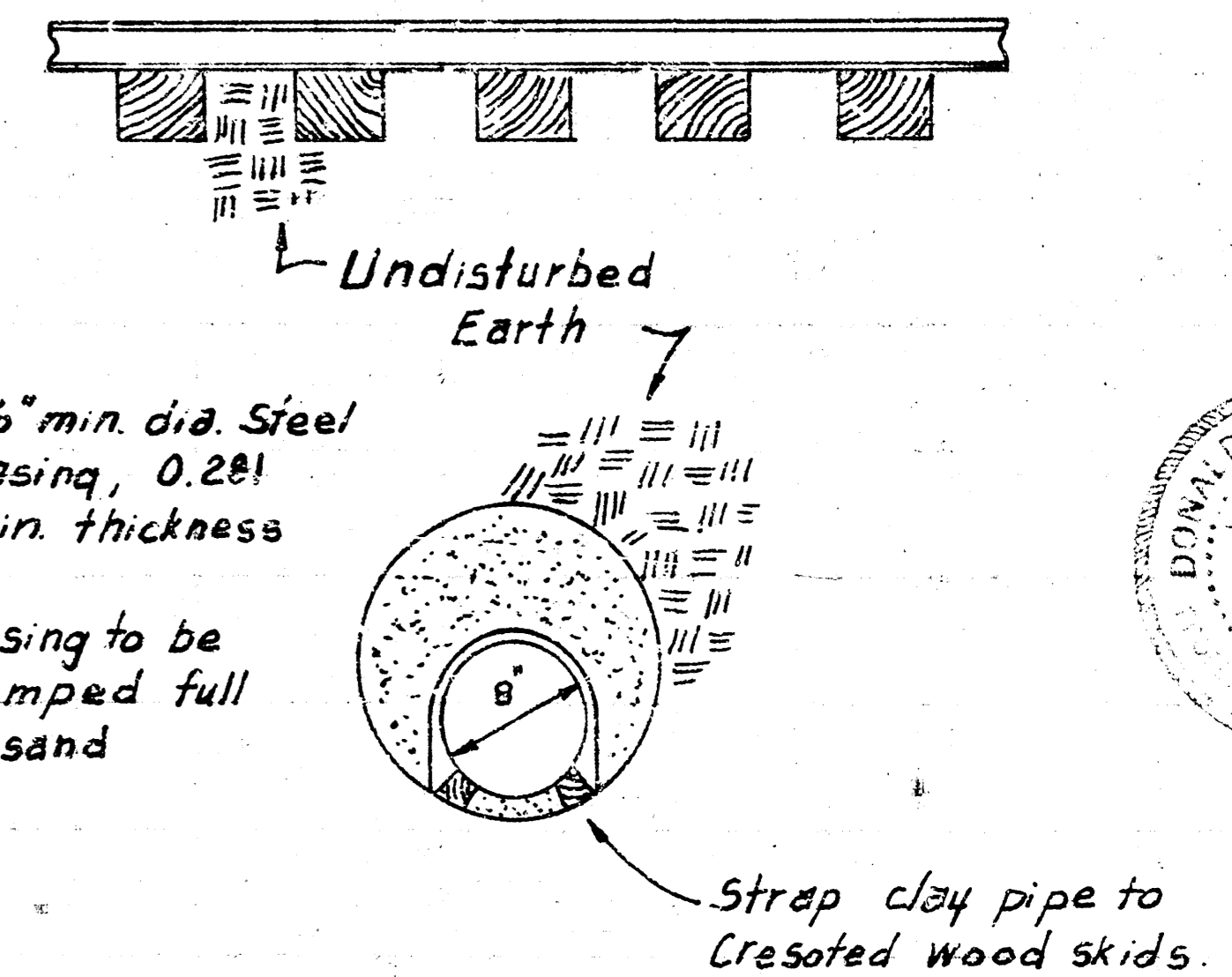


BORING AND JACKING UNDER RAILROAD TRACKS

Detail

Note:

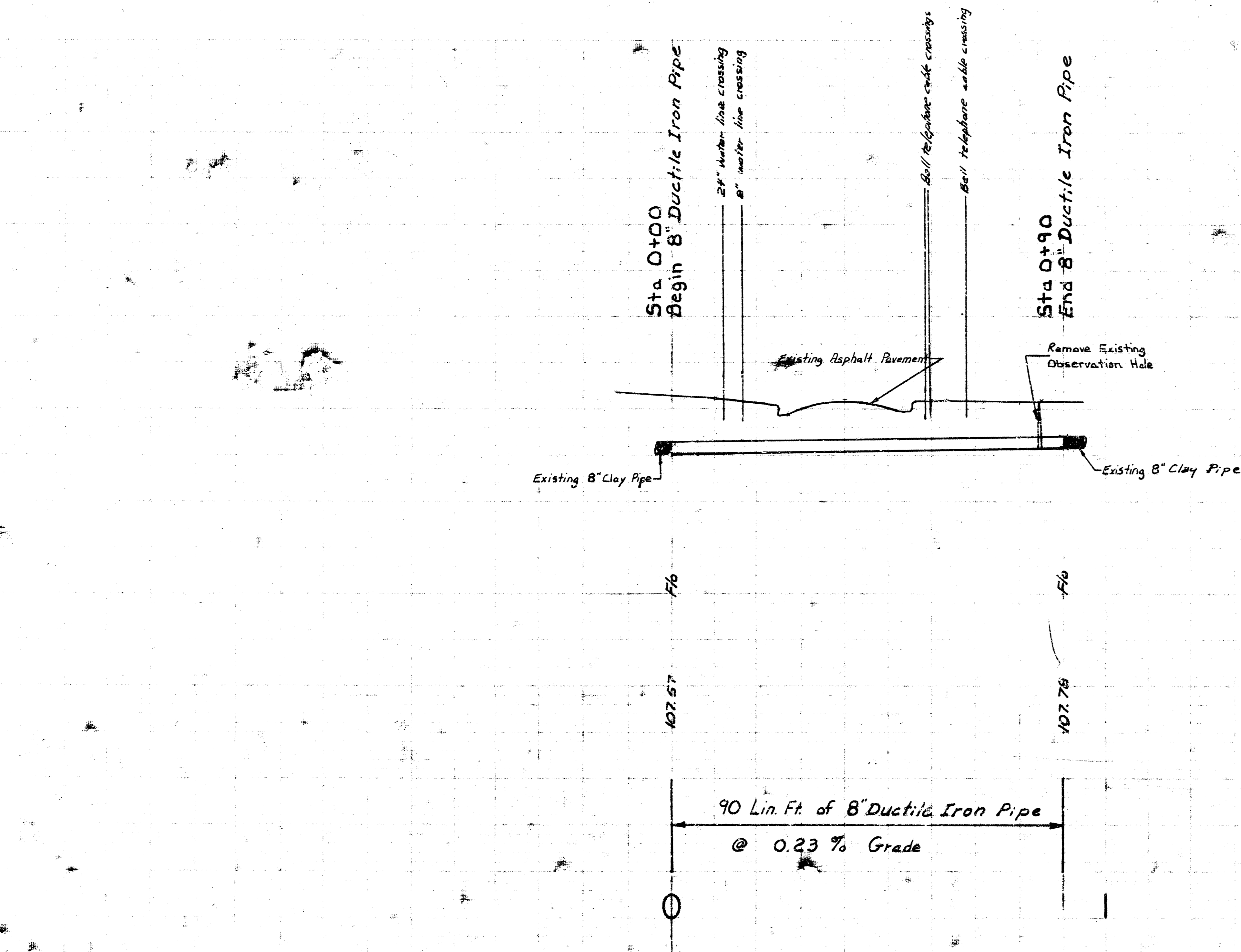
1. The 8" clay pipe to be placed under Rail Road by boring and jacking 16" diameter 0.281 welded steel pipe and threading the 8" clay pipe through the 16" steel casing.
2. All costs of labor and materials for boring and jacking 16" diameter 0.281 welded steel pipe shall be included in the bid price of lin. ft. of 16" steel casing.
3. All costs of labor and materials for pumping 16" steel casing full of sand shall be included in the bid price of lin. ft. of 16" steel casing.
4. Lin. ft. of 8" clay pipe placed in 16" steel casing shall be paid by lin. ft. of 8" clay pipe.



TYPICAL SECTION

Tunnel under Railroad Tracks from Sta. 0+66 to Sta. 1+01

Note: 16" Steel pipe to be placed in augered hole. Good used Steel pipe may be used when approved by the Field Engineer. 8" Clay pipe to be slid into place on crosot wood skids.



Reconstruct a sewer to supplement part of Sanitary Sewer No. 8 and Sanitary Sewer No. 21 in Second Street between McLean & Dodge  
 CITY OF WICHITA, KANSAS  
 R. W. LINN — CITY ENGINEER  
 Project Number: 25K1572064