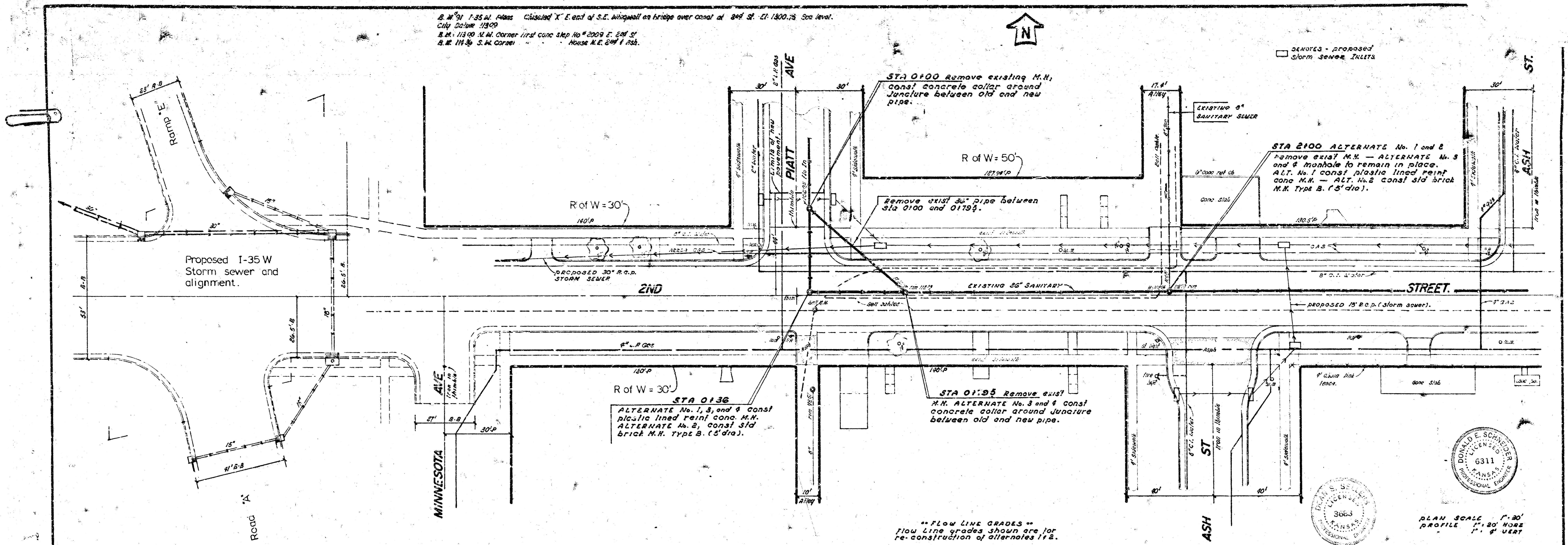


B.M. 113.00 1.35 W. Floor Calculated X E. end of S.E. wingwall on bridge over canal at 2nd St. El. 1300.75 Sea level.
 City Datum 1989
 B.M. 113.00 N.W. Corner first conc. strip No. 2009 E. 2nd St.
 B.M. 114.30 S.W. Corner House A.E. 244 1 St.

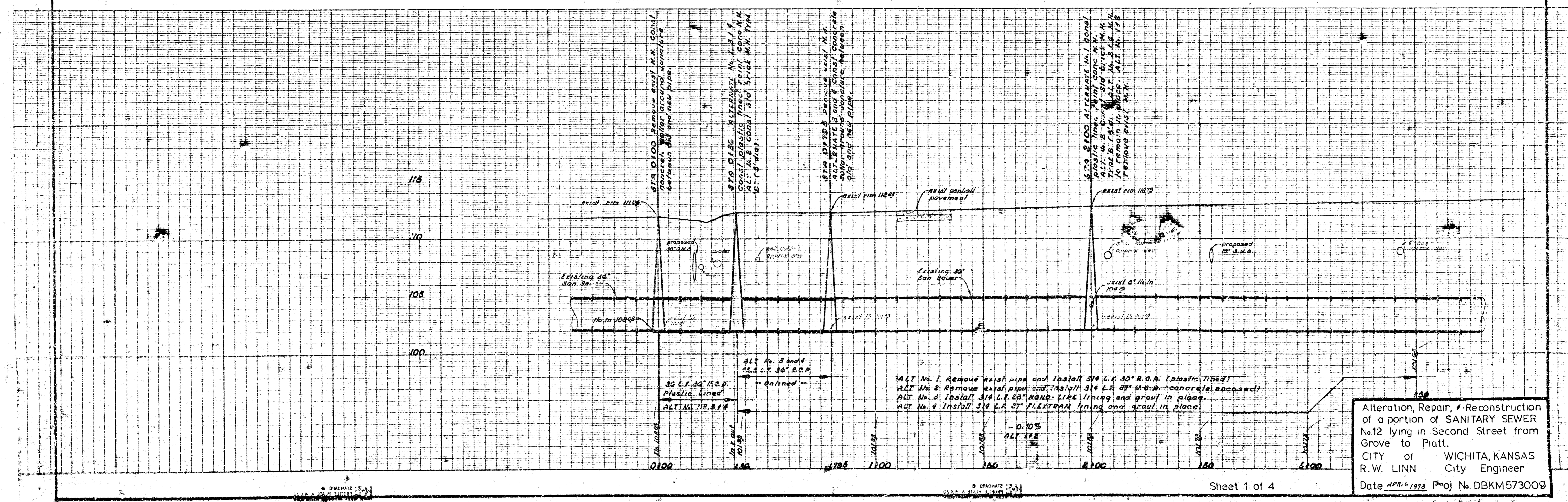


□ DENOTES - PROPOSED
 Storm Sewer Inlets



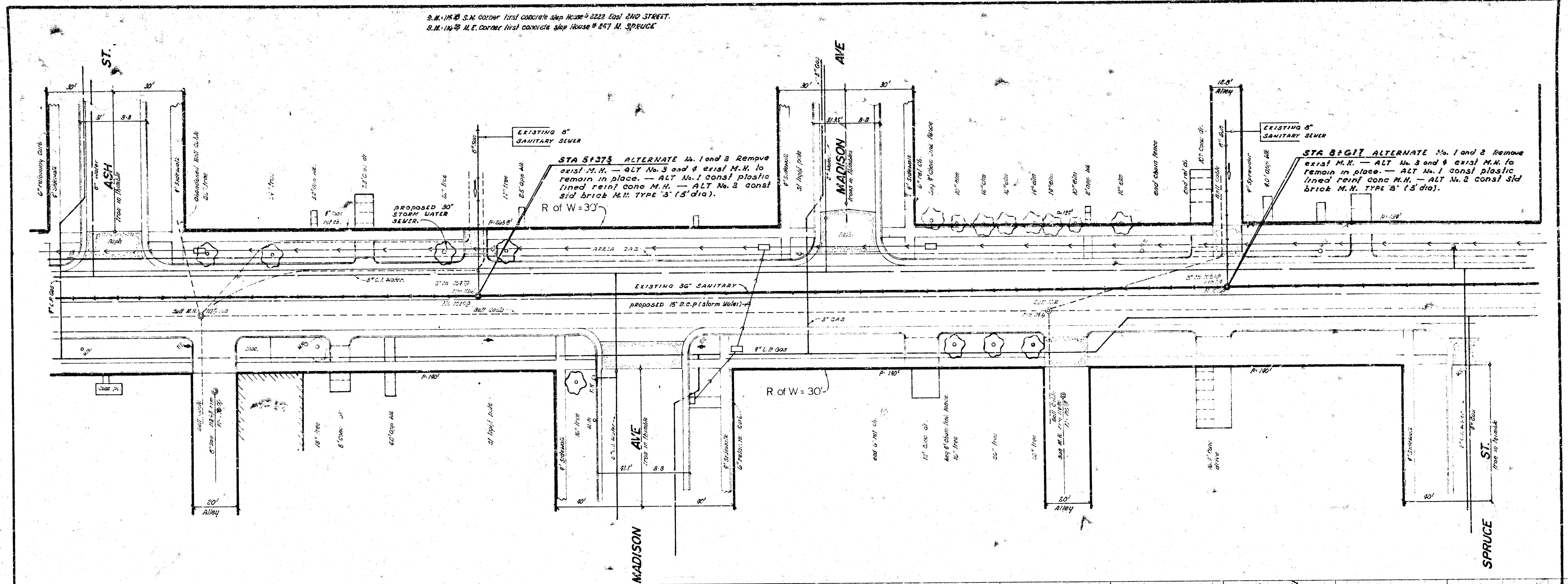
** FLOW LINE GRADES **
 Flow Line grades shown are for re-construction of alternates 1 & 2.

DOUGLAS E. SCHNEIDER
 LICENSED PROFESSIONAL ENGINEER
 6311
 KANSAS
 PLAN SCALE 1" = 30'
 PROFILE 1" = 20' VERT



Alteration, Repair, & Reconstruction of a portion of SANITARY SEWER No. 12 lying in Second Street from Grove to Platt.
 CITY of WICHITA, KANSAS
 R.W. LINN City Engineer
 Date APRIL 1979 Proj. No. DBKM573009

S.M. 114 1/2 S.W. Corner first concrete step House # 2222 East 2ND STREET.
 S.M. 114 1/2 N.E. Corner first concrete step House # 2471 N. SPRUCE



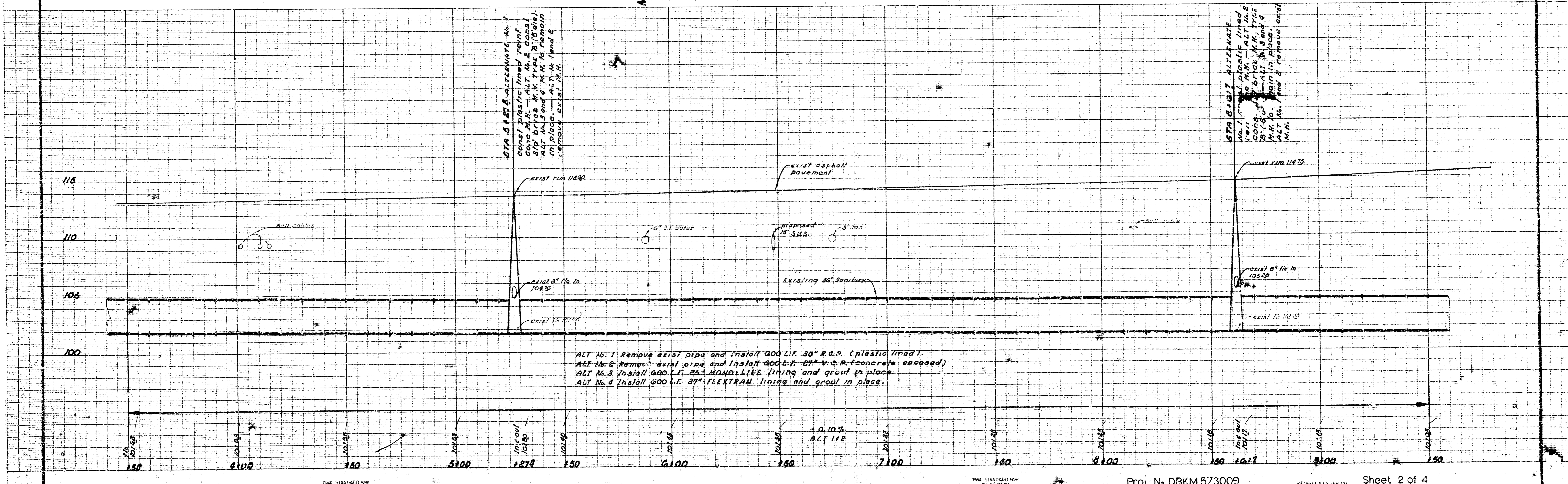
STA 5+37.5 ALTERNATE No. 1 and 2 Remove exist. M.H. — ALT No. 3 and 4 exist M.H. to remain in place. — ALT No. 1 const plastic lined reinf conc M.H. — ALT No. 2 const sid brick M.H. TYPE 'B' (5' dia).
 R of W = 30'

STA 8+61.7 ALTERNATE No. 1 and 2 Remove exist M.H. — ALT No. 3 and 4 exist M.H. to remain in place. — ALT No. 1 const plastic lined reinf conc M.H. — ALT No. 2 const sid brick M.H. TYPE 'B' (5' dia).

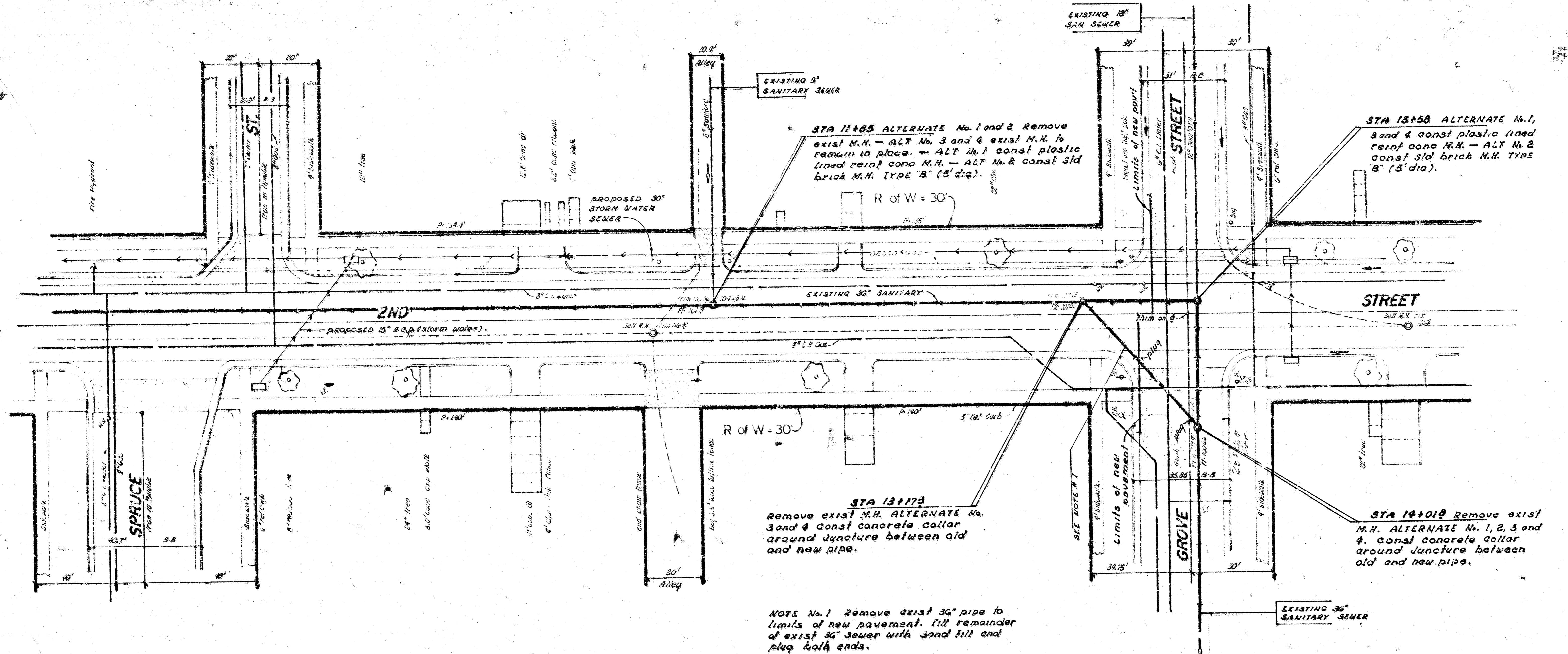
STA 5+37.5 ALTERNATE No. 1 const plastic lined reinf conc M.H. — ALT No. 2 const sid brick M.H. TYPE 'B' (5' dia). — ALT No. 3 and 4 exist M.H. to remain in place. — ALT No. 1 and 2 remove exist. M.H.

STA 8+61.7 ALTERNATE No. 1 const plastic lined reinf conc M.H. — ALT No. 2 const sid brick M.H. TYPE 'B' (5' dia). — ALT No. 3 and 4 exist M.H. to remain in place. — ALT No. 1 and 2 remove exist. M.H.

ALT No. 1 Remove exist pipe and install 600 L.F. 36" R.C.P. (plastic lined).
 ALT No. 2 Remove exist pipe and install 600 L.F. 27" V.C.P. (concrete encased)
 ALT No. 3 Install 600 L.F. 25" MONO-LINE lining and grout in place.
 ALT No. 4 Install 600 L.F. 27" FLEXTRAN lining and grout in place.



R.M. 11908 U.S. Corner first cone stop House of S. at corner 240 and GROVE.
 S. 2529 East 240 STREET.



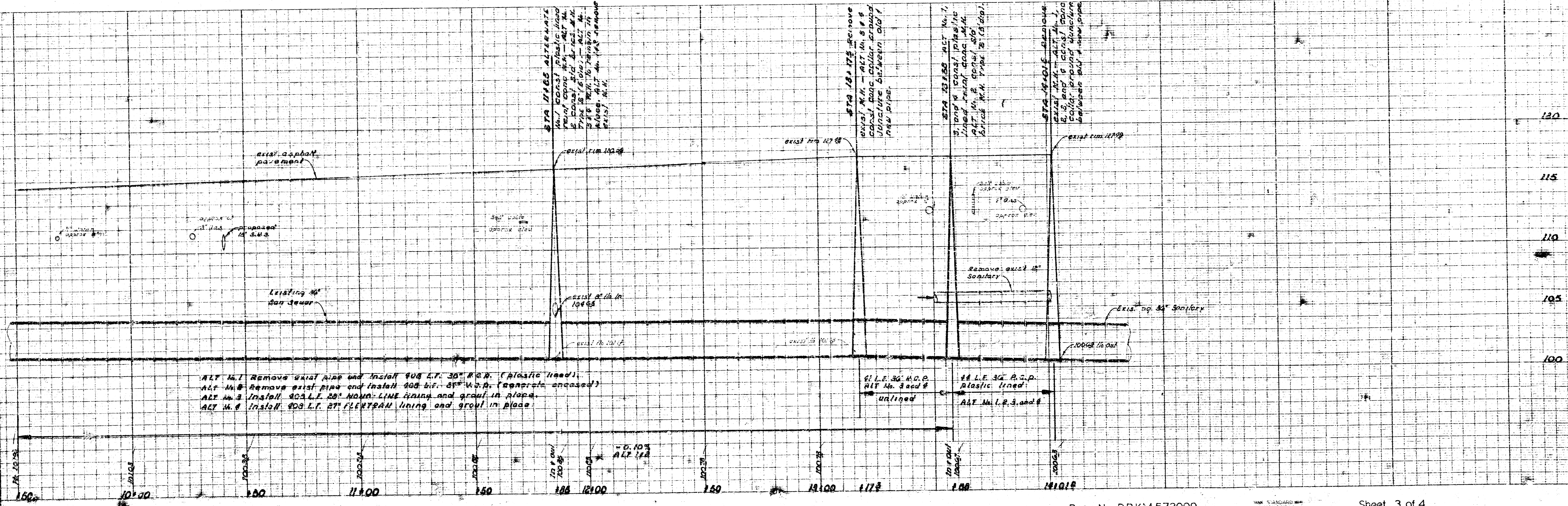
STA 12+85 ALTERNATE No. 1 and 2 Remove exist M.H. - ALT No. 3 and 4 exist M.H. to remain in place. - ALT No. 1 const plastic lined reinf conc M.H. - ALT No. 2 const std brick M.H. (type B' (5' dia).
 R of W = 30'

STA 13+58 ALTERNATE No. 1, 3 and 4 const plastic lined reinf conc M.H. - ALT No. 2 const std brick M.H. TYPE 'B' (5' dia).

STA 13+175 Remove exist M.H. ALTERNATE No. 3 and 4 const concrete collar around juncture between old and new pipe.

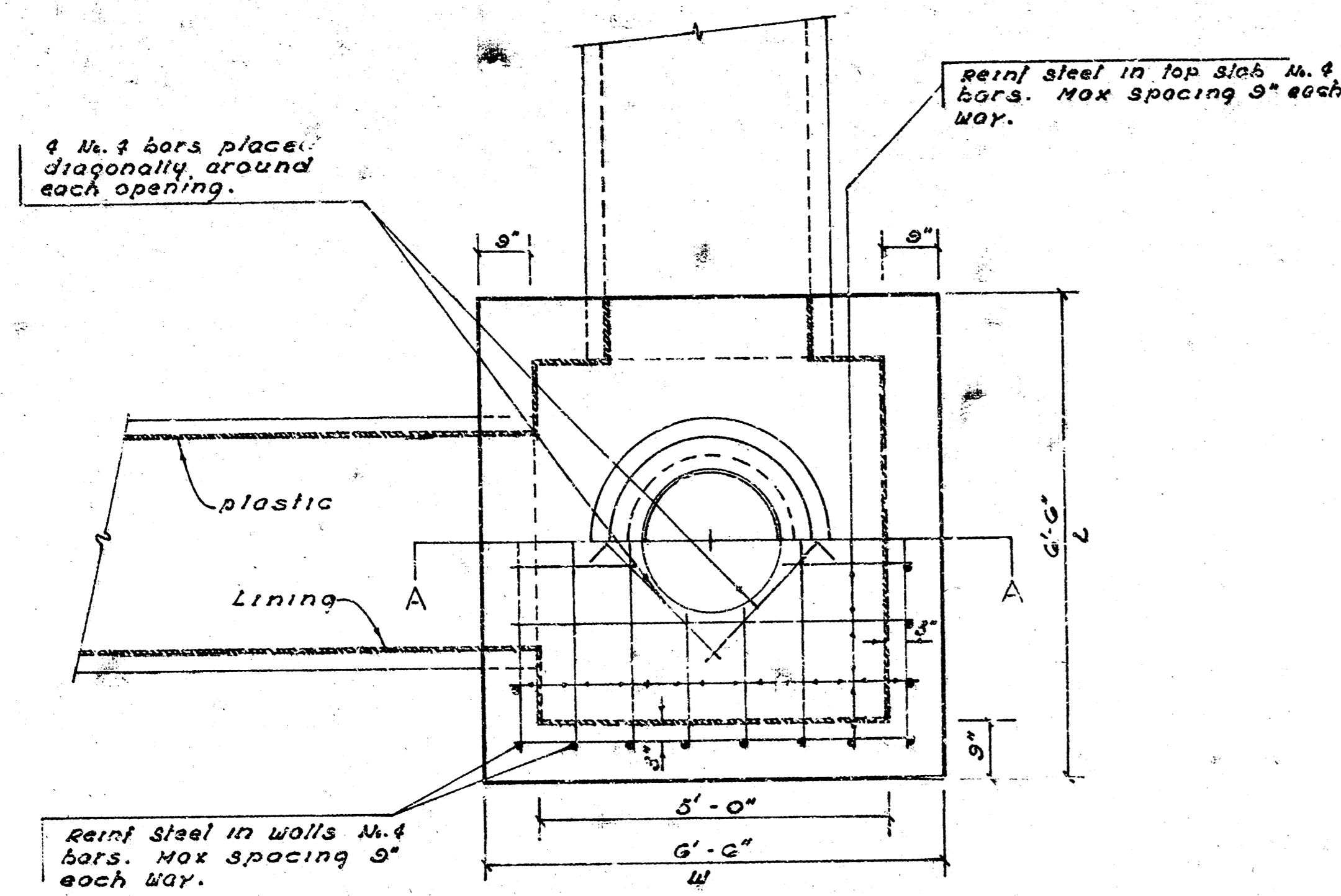
STA 14+018 Remove exist M.H. ALTERNATE No. 1, 2, 3 and 4 const concrete collar around juncture between old and new pipe.

NOTE No. 1 Remove exist 30" pipe to limits of new pavement. Fill remainder of exist 30" sewer with sand fill and plug both ends.



ALT No. 1 Remove exist pipe and install 30" P.C.P. (plastic lined).
 ALT No. 2 Remove exist pipe and install 30" P.C.P. (concrete encased).
 ALT No. 3 Install 30" L.F. 20' MONOLINE lining and gravel in place.
 ALT No. 4 Install 30" L.F. 20' FLEXTAN lining and gravel in place.

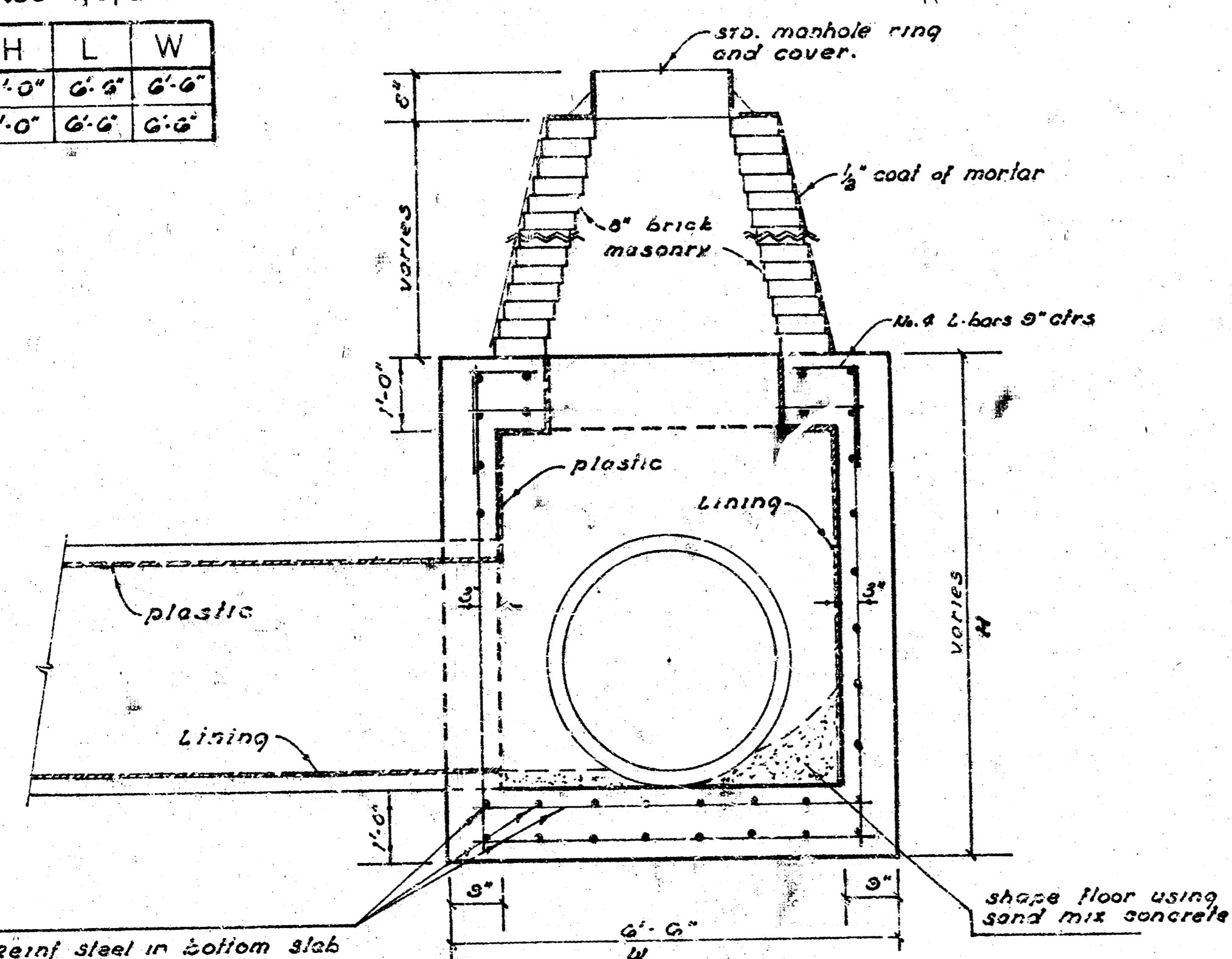
31 L.F. 30" R.C.P. ALT No. 3 and 4 unlined
 28 L.F. 30" R.C.P. plastic lined
 ALT No. 1, 2, 3, and 4



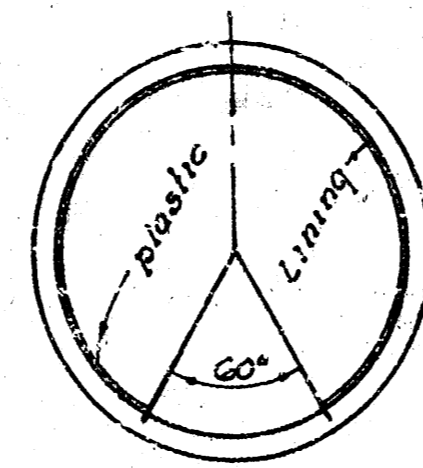
PLAN

REINF CONC MANHOLES
Alternates 1, 3, and 4

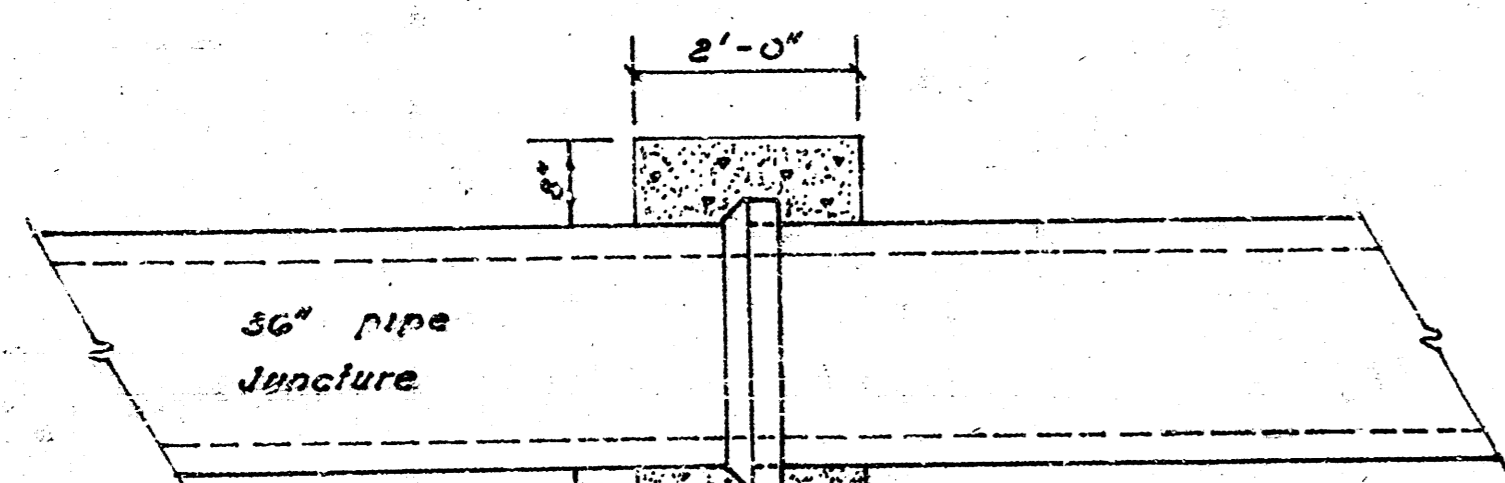
Station	H	L	W
0+36	7'-0"	6'-6"	6'-6"
13+58	8'-0"	6'-6"	6'-6"



SECTION A - A
(no scale)



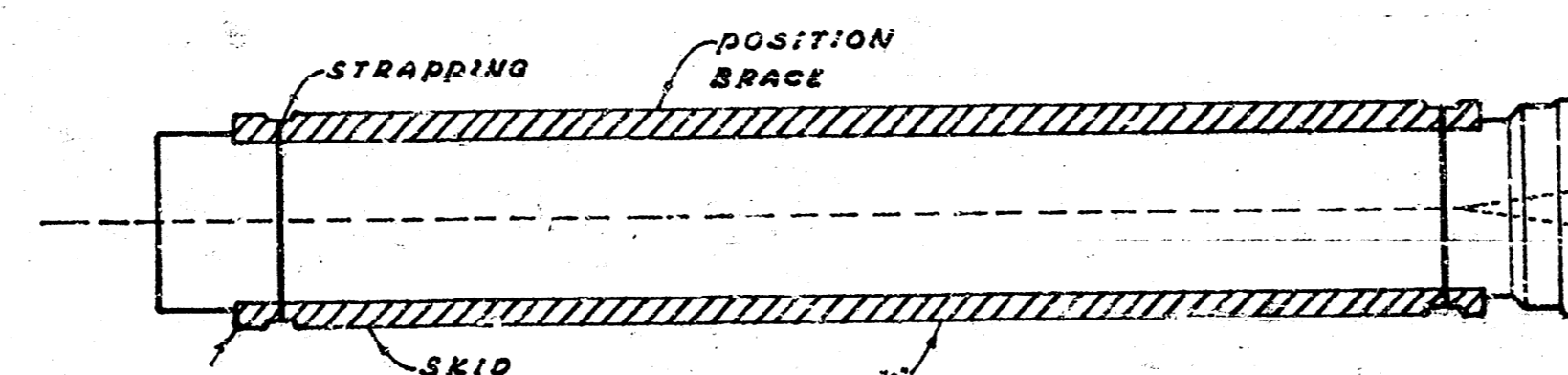
DETAIL: R.C.P. (plastic lining)



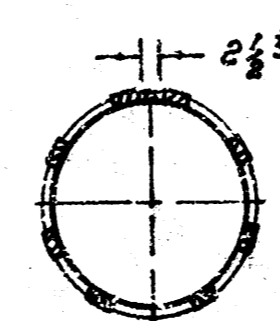
CONCRETE COLLAR DETAIL

Sta 0+00 Alternate 1, 2, 3, and 4
Sta 0+79.5 Alt 3 and 4
Sta 13+17.5 Alt 3 and 4
Sta 14+01.8 Alternate 1, 2, 3, and 4

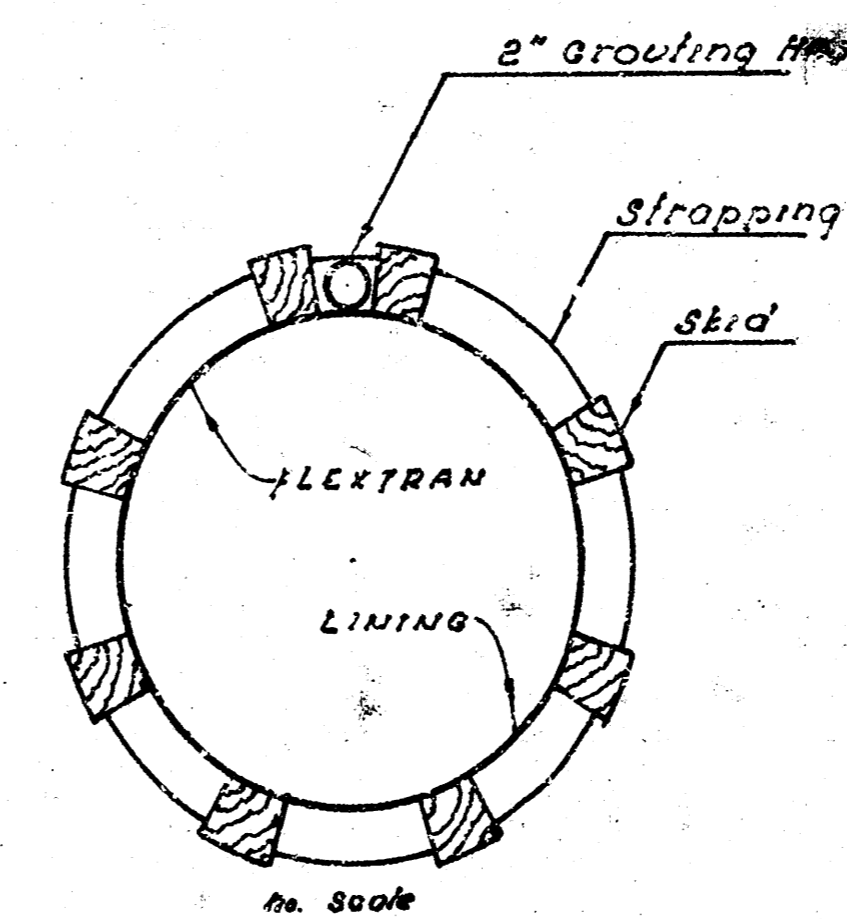
NOTE: contractor is to utilize Bell and Barrel Juncture between old & new pipe if at all possible.



Alternate No. 4 - 27" FLEXTRAN LINING DETAIL



NOTE: The leading or forward ends of the skids should be rounded as shown for 'A' above. Skids should not be less than 8' shorter than the pipe being installed. Care should be taken to install the bottom skids parallel to the ϕ of the pipe to prevent rolling of pipe in casing. Watch skids for strapping. Strapping should be spaced according to diagram.



NOTE: 95' O SKID SPACING except for two skids.