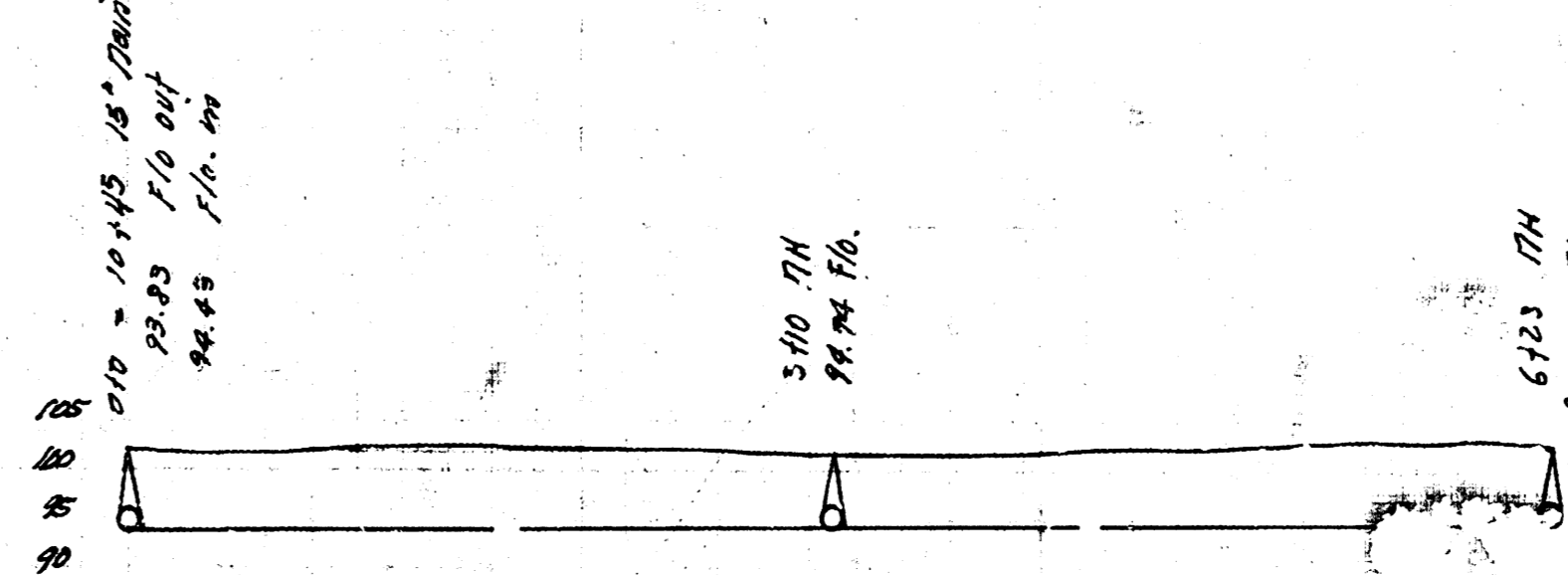
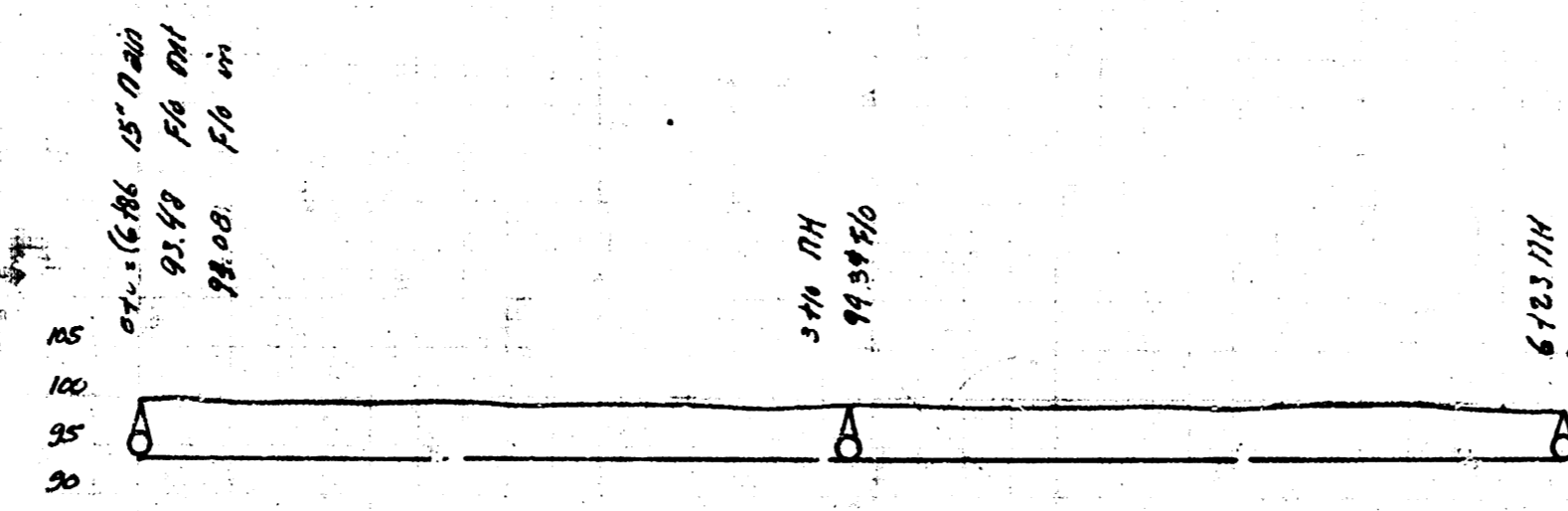
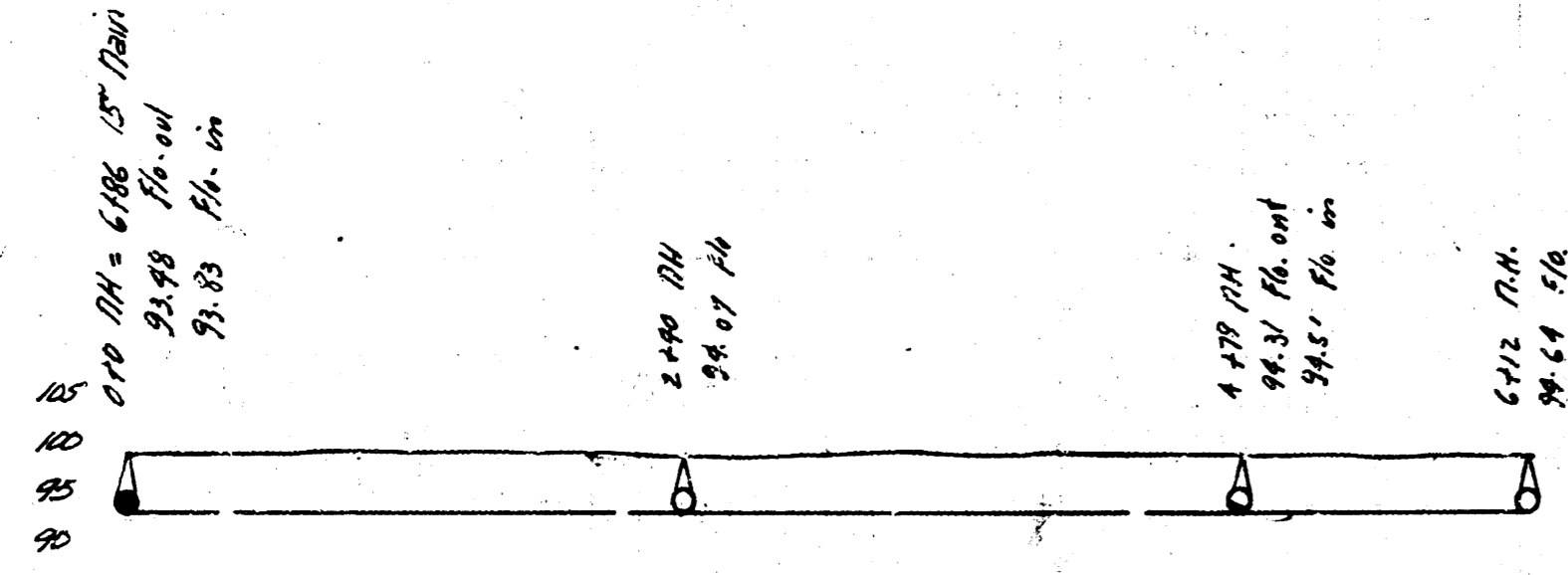


Lot 3, Subman W, SS #12

Lot 7, Dist. AS, SS #12

Lot 1, Subman W, SS #12

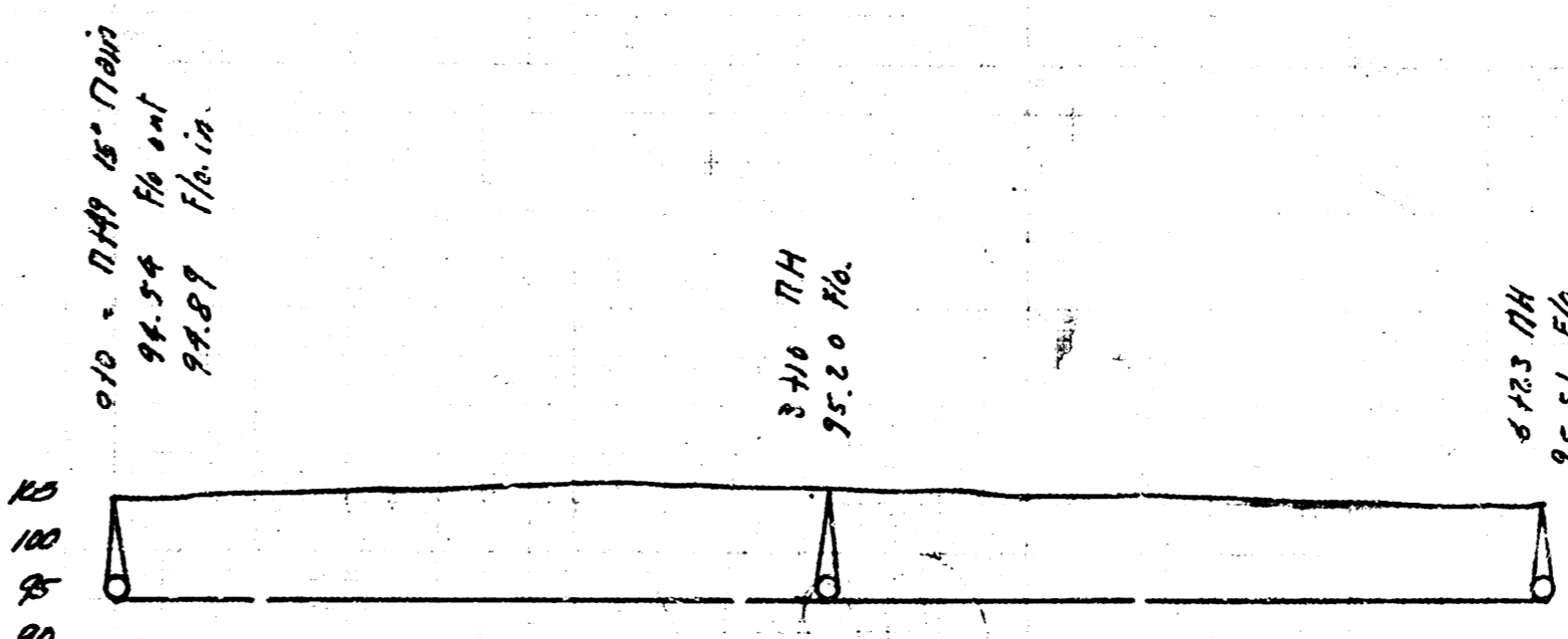
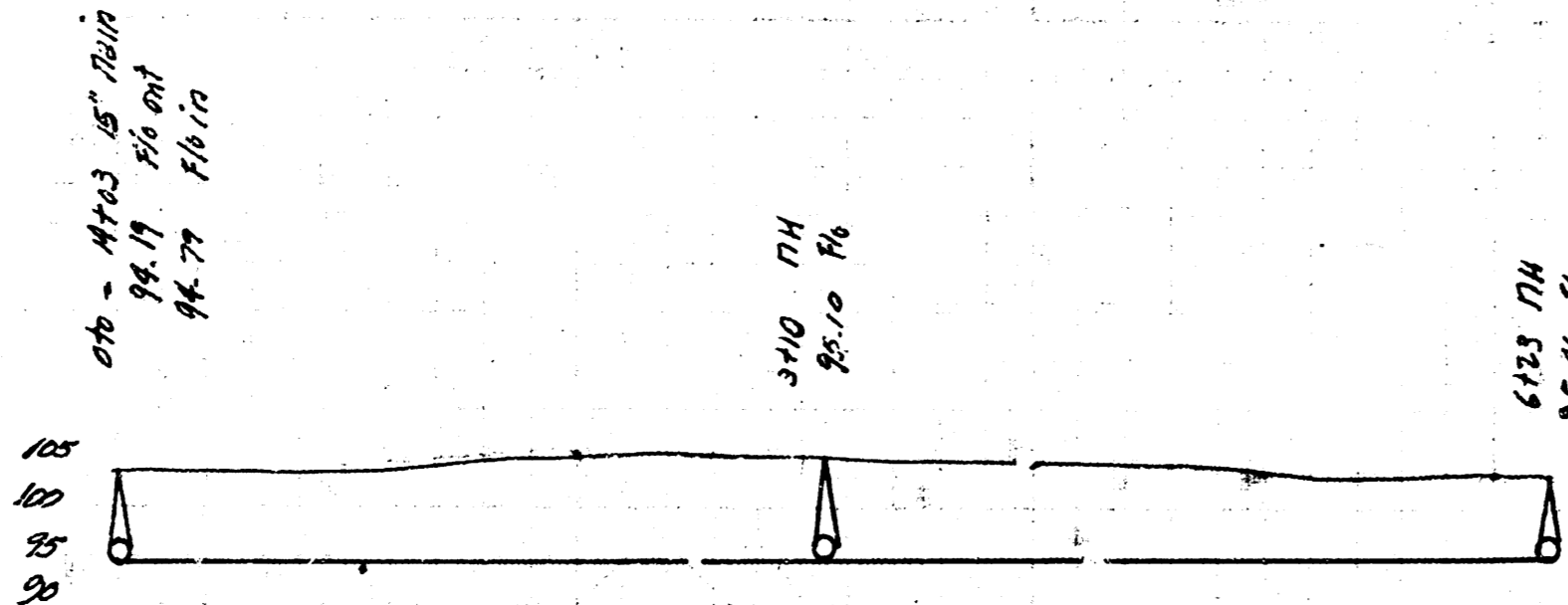
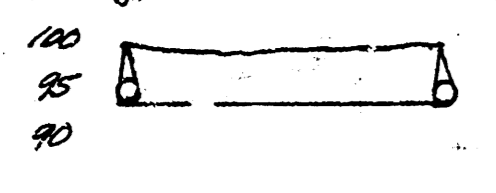


LINE I  
8" VCP, 10.10%  
LAT. 3, Subman W, SS #12.

LINE I  
8" VCP, 10.10%

LAT. 7, DIST. AS, SS #12

LINE II  
8" VCP, 10.10%



LINE I-A  
8" VCP, 10.10%

8" VCP, 10.10%  
LAT. 1, Subman W, SS #12

8" VCP, 10.10%

371.105 TO 200 Spike in N.S. Transformer Pole 20' S. of S.L. Cor. bet. Volutzia & Erie.  
200.105 TO 200 Spike in S.S. Elm Tree NW Cor. Estelle & Corne.

Lot 3, Subman W, SS #12  
Lot 7, Dist. AS, SS #12  
Lot 1, Dist. W, SS #12  
City of Wichita, Kansas  
L.K. White City Engineer  
May 1949