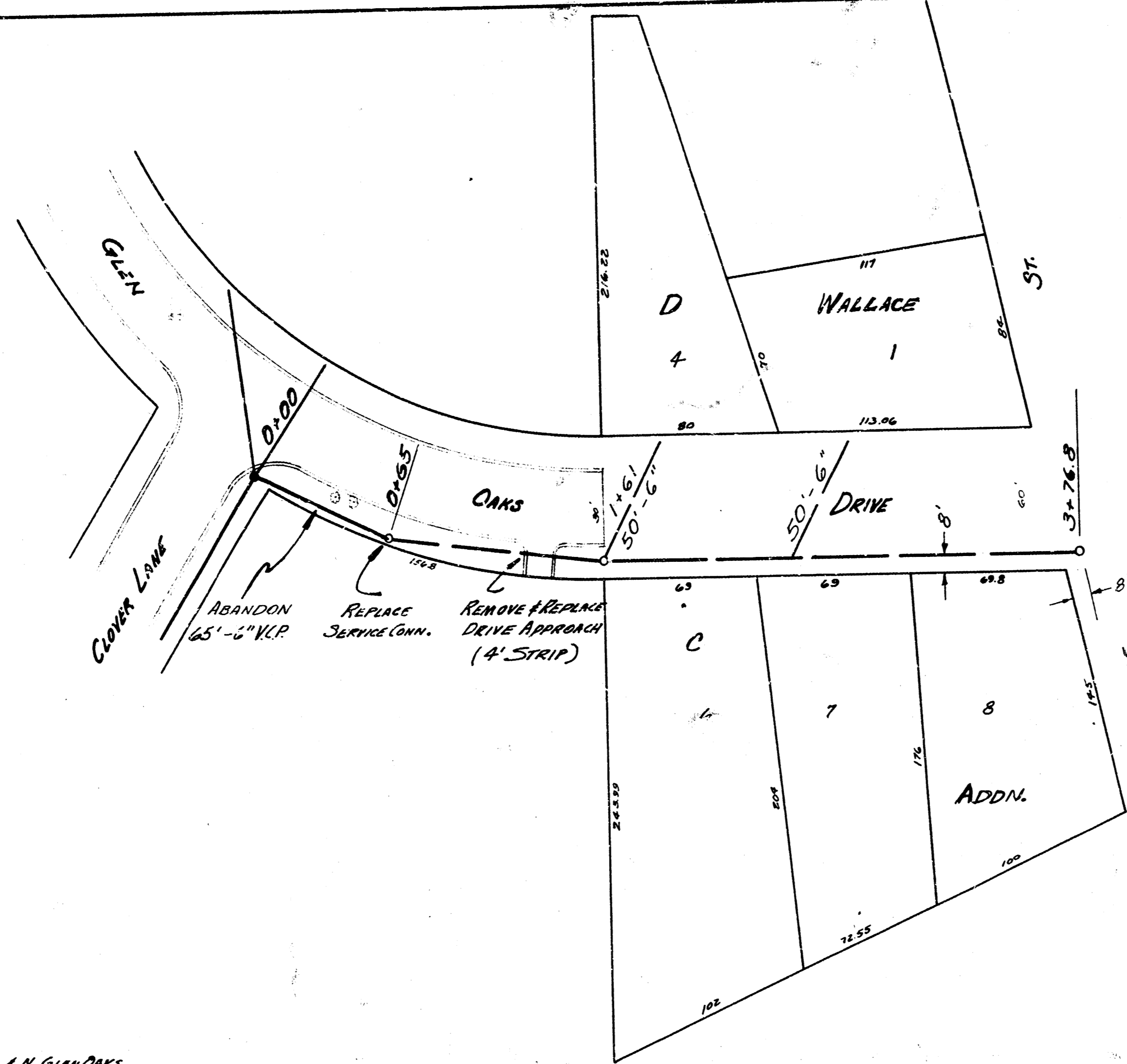
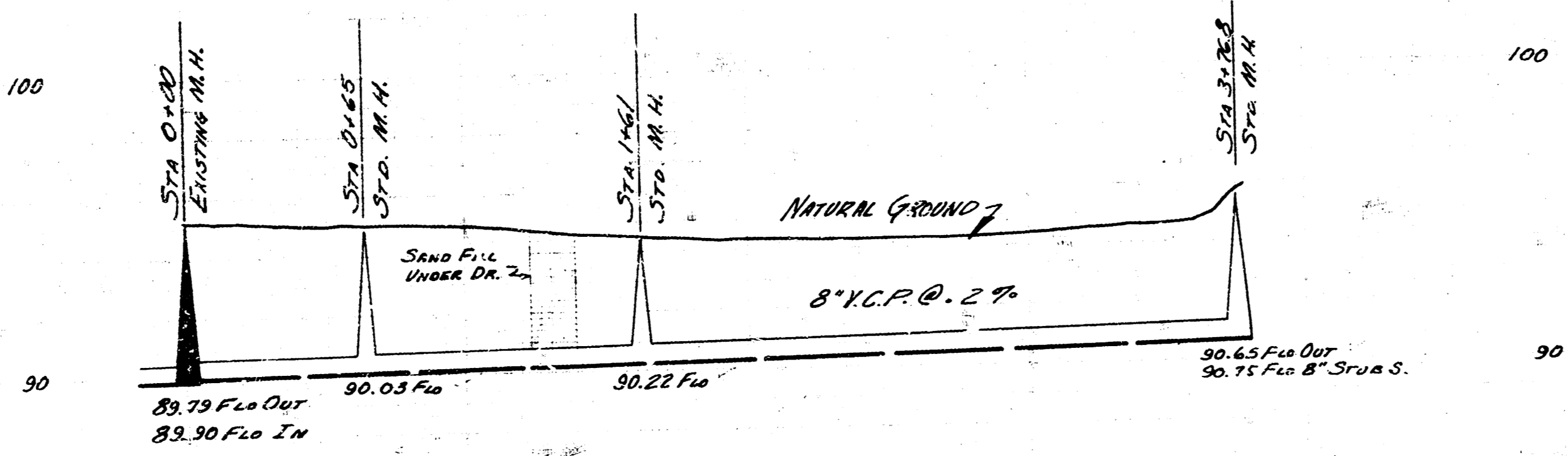


SURVEY C. MILLS Notebook K-27
 PLAN D. SULLIVAN
 DATE: SEPT. 1955

B.M. 97.22 SPIRES IN POWER POLE #211 E. BANK CANAL IN GLEN OAKS



PLAN GRADE 1"=40'
 PROFILE GRADE 1"=40' HOR. 1"=4' VERTICAL



376.8 LIN. FT. 8" V.C.P. @ .2%

LAT. 21 DIST. AS S.S. 12
 CITY OF WICHITA, KANSAS
 E. S. SMITH CITY ENGINEER
 SEPT. 1955 PROJ. NO. C25-57