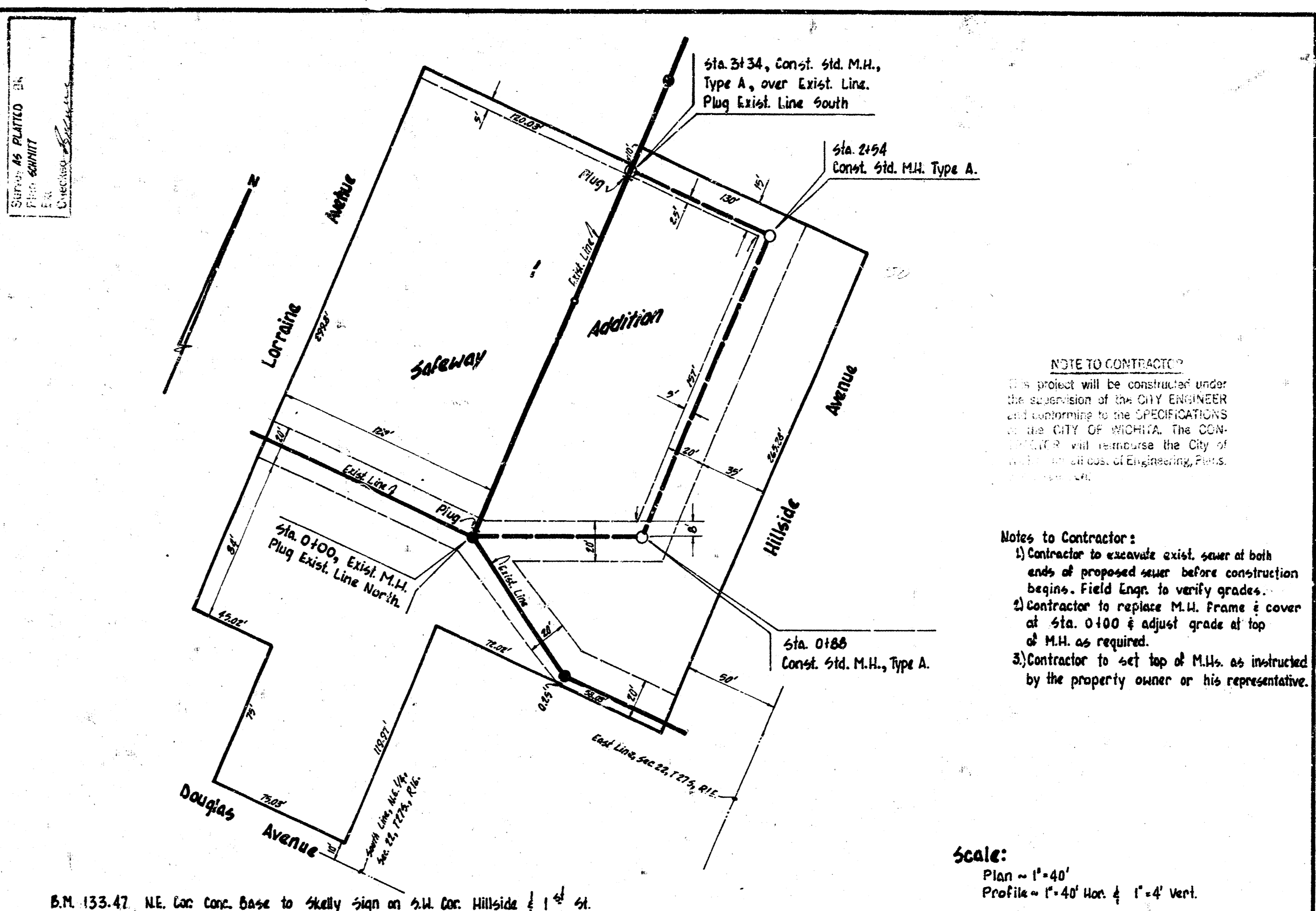


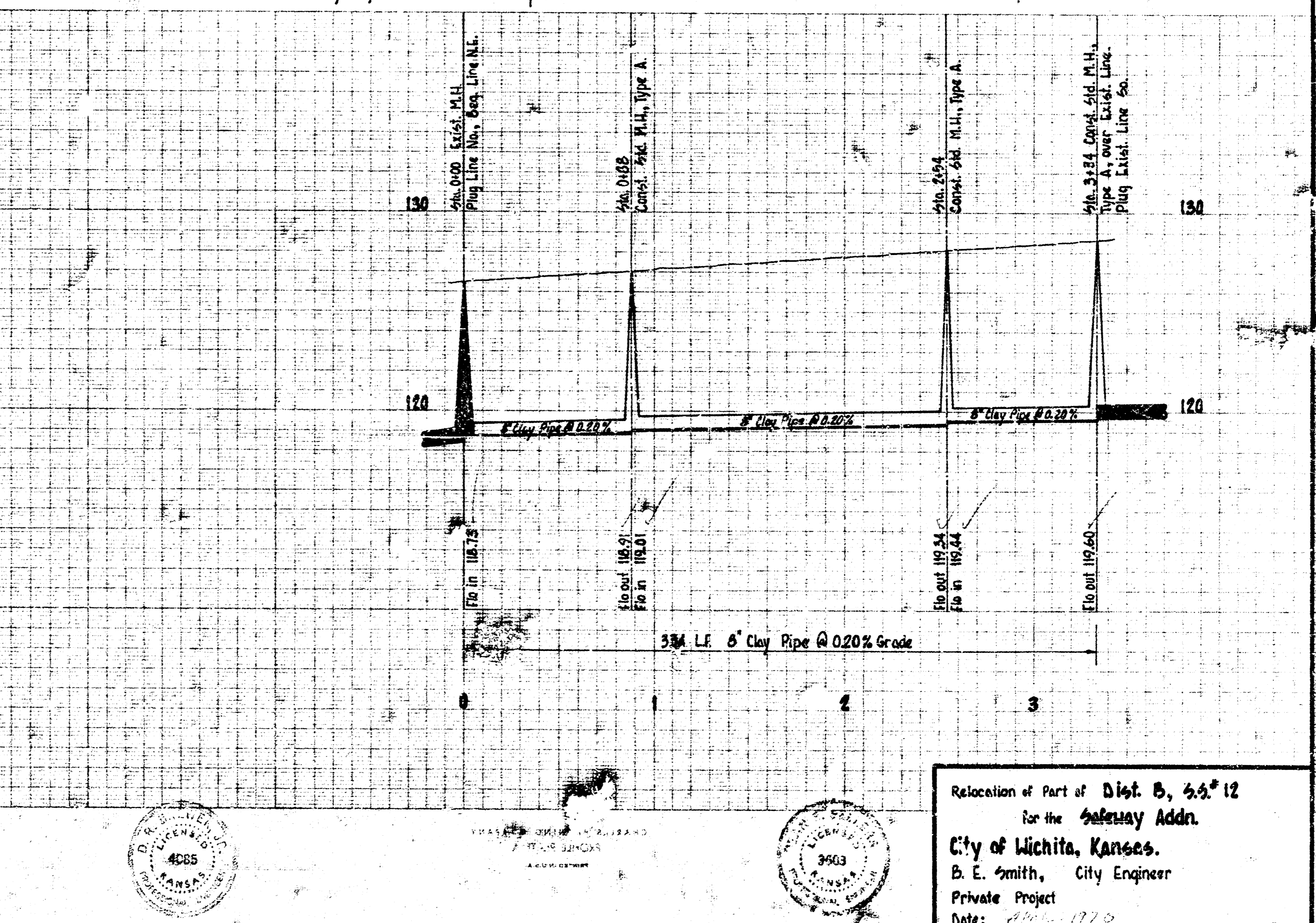
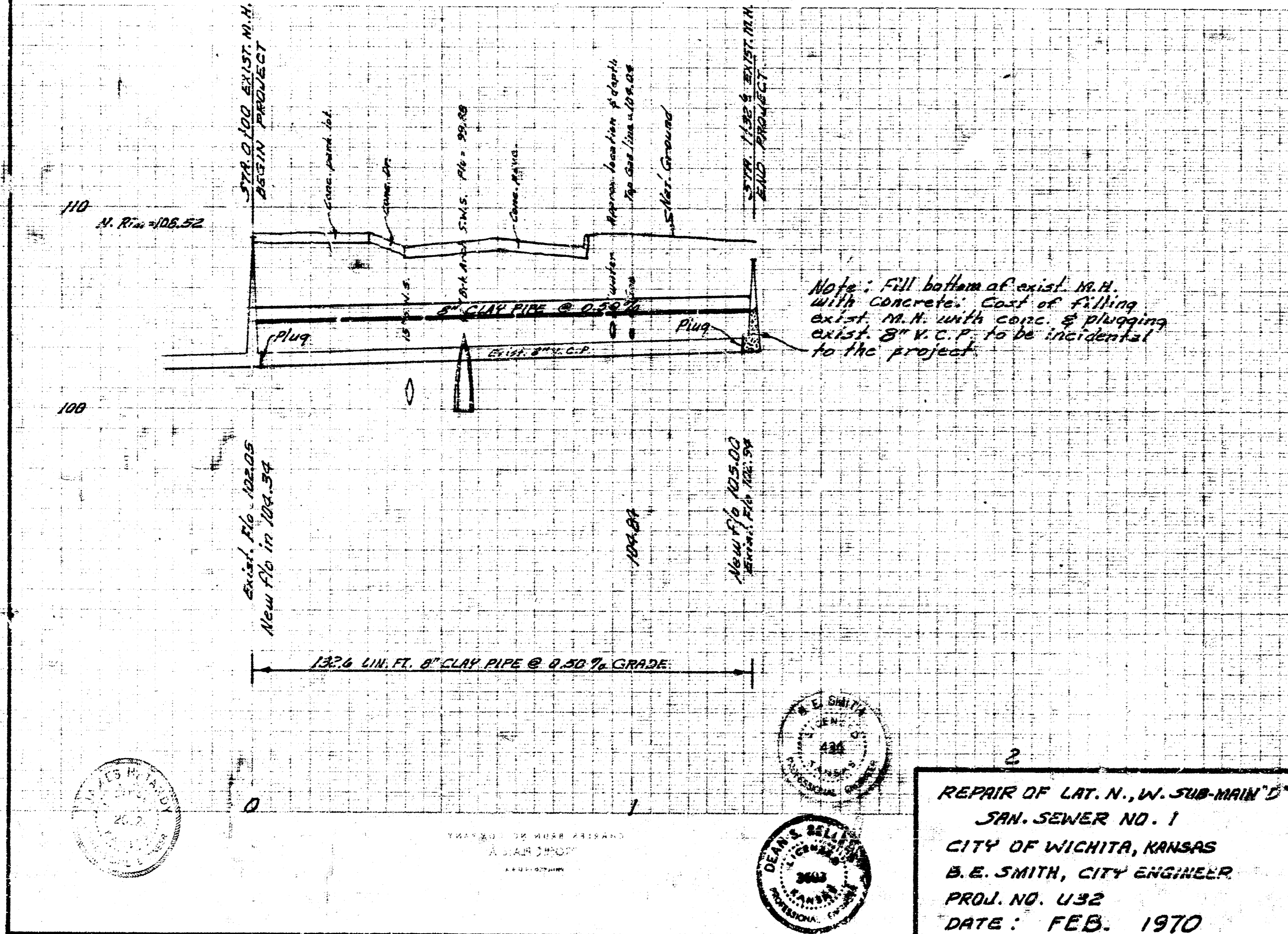
B.M. 109.75 "Standard" N.W. Washington & Lincoln 32 1/4' N. & 39' W. of Iron in G



B.M. 133.47 NE. Cor. Conc. Base to Skelly sign on S.W. Cor. Hillside | 1' 4" H.

NOTE TO CONTRACTOR
This project will be constructed under the supervision of the CITY ENGINEER and conforming to the SPECIFICATIONS of the CITY OF WICHITA. THE CONTRACTOR SHALL reimburse the City of Wichita for the cost of Engineering, Plans, etc.

Notes to Contractor:
1) Contractor to excavate exist. sewer at both ends of proposed sewer before construction begins. Field Eng. to verify grades.
2) Contractor to replace M.H. frame & cover at Sta. 0100 & adjust grade at top of M.H. as required.
3) Contractor to set top of M.H.s as instructed by the property owner or his representative.



REPAIR OF LAT. N., W. SUB-MAIN'S
SAN. SEWER NO. 1
CITY OF WICHITA, KANSAS
B. E. SMITH, CITY ENGINEER
PROJ. NO. U32
DATE: FEB. 1970

Relocation of Part of Dist. B, 35° 12'
for the **Safeway** Addn.
City of Wichita, Kansas.
B. E. Smith, City Engineer
Private Project
Date: Feb. 1970