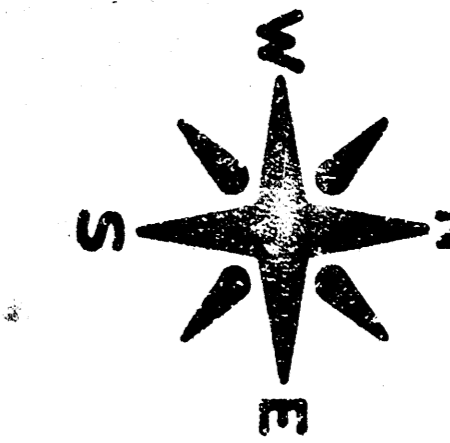
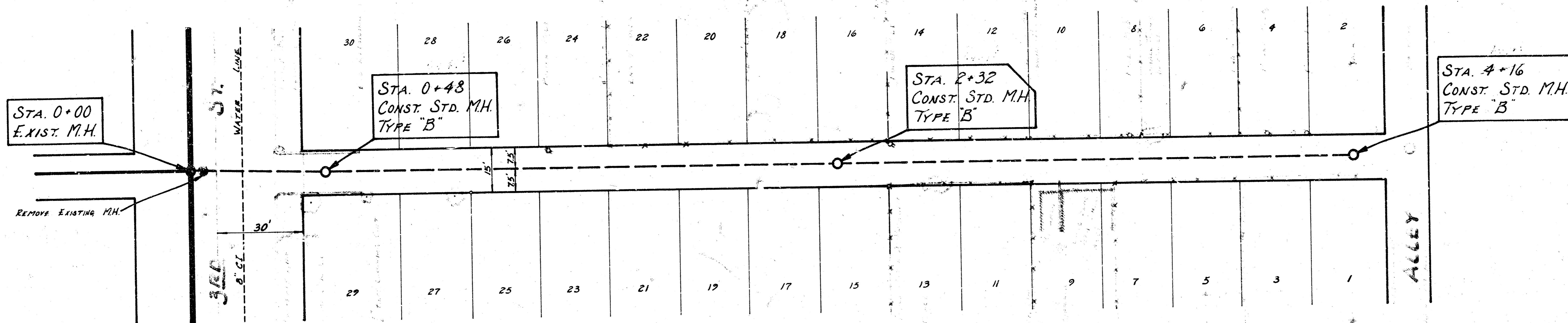


B.M. 143.06 "C" CUT E. END RETURN, NE CORNER
CENTRAL & LORRAINE



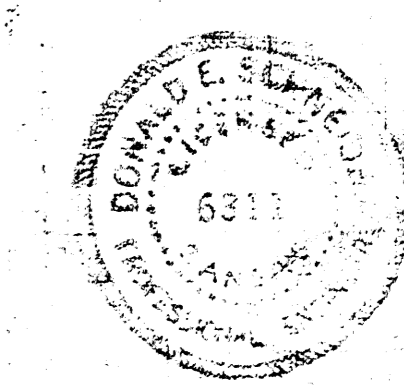
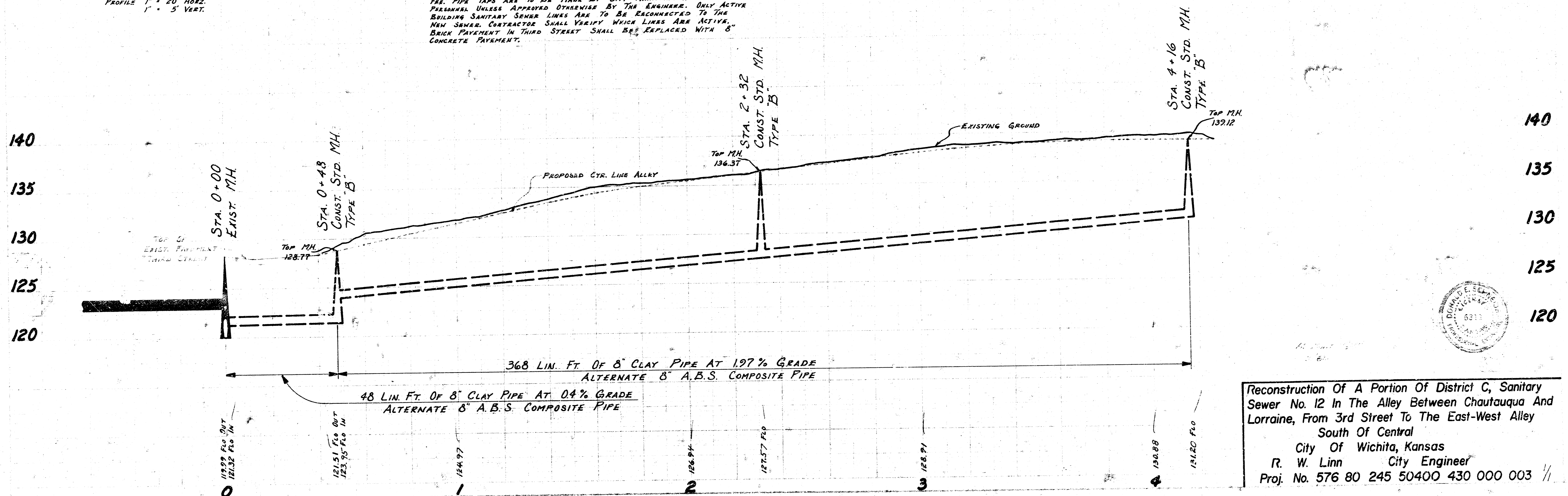
MAPLE



GROVE

SCALE " 1" = 20'
PLAN " 1" = 20' HORIZ.
PROFILE " 1" = 5' VERT.

NOTE: CONTRACTOR'S METHOD FOR HANDLING SEWAGE FLOWS DURING CONSTRUCTION OF THIS PROJECT SHALL BE APPROVED BY THE ENGINEER. CONTRACTOR WILL BE REQUIRED TO OBTAIN PERMITS FROM PUBLIC WORKS ADMINISTRATION BEFORE RECONNECTING BUILDING SERVICE LINES. PERMIT FEE WILL BE WAIVED. BID ITEM FOR SERVICE CONNECTIONS SHALL COVER ALL COST FOR FURNISHING AND INSTALLING SADDLE INCLUDING TAPPING FEE. PIPE TAPS ARE TO BE MADE BY CITY MAINTENANCE DEPARTMENT PERSONNEL UNLESS APPROVED OTHERWISE BY THE ENGINEER. ONLY ACTIVE BUILDING SANITARY SEWER LINES ARE TO BE RECONNECTED TO THE NEW SEWER. CONTRACTOR SHALL VERIFY WHICH LINES ARE ACTIVE. BRICK PAVEMENT IN THIRD STREET SHALL BE REPLACED WITH 8" CONCRETE PAVEMENT.



Reconstruction Of A Portion Of District C, Sanitary Sewer No. 12 In The Alley Between Chautauqua And Lorraine, From 3rd Street To The East-West Alley
South Of Central
City Of Wichita, Kansas
R. W. Linn City Engineer
Proj. No. 576 80 245 50400 430 000 003 //

14 3 4 5