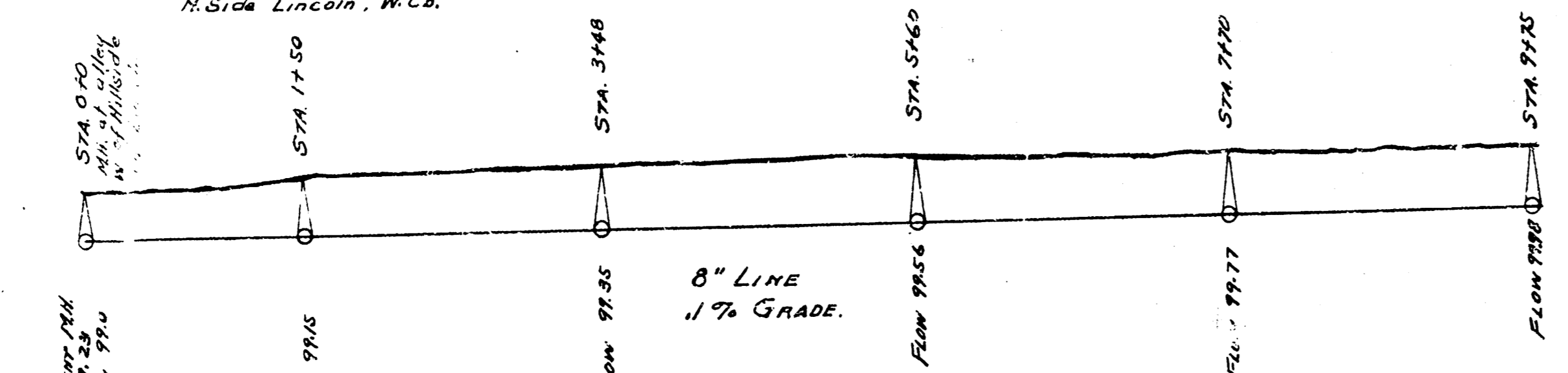
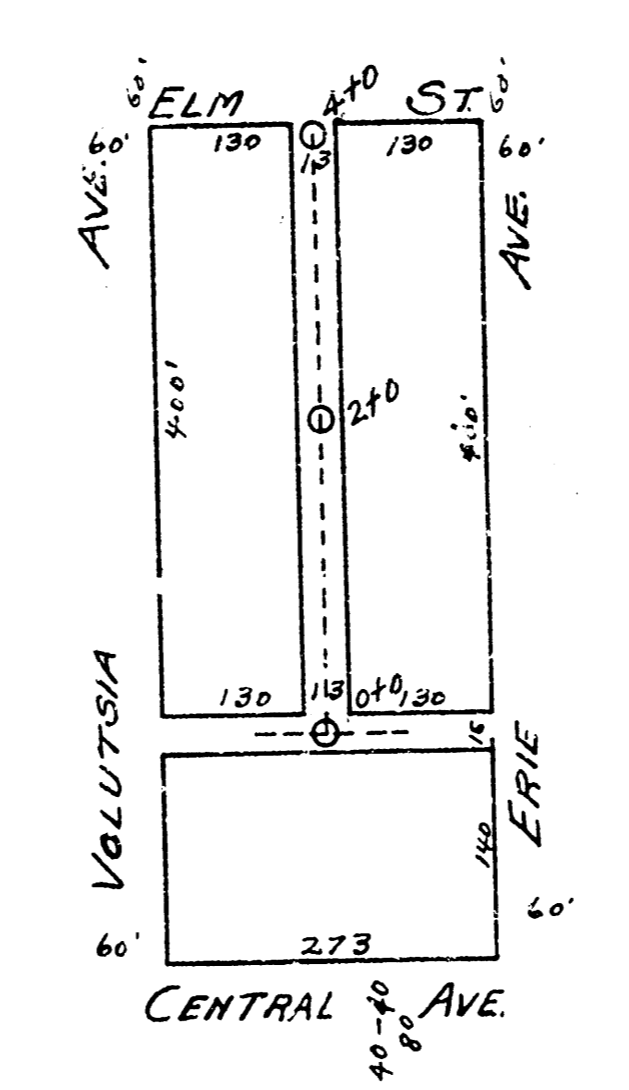


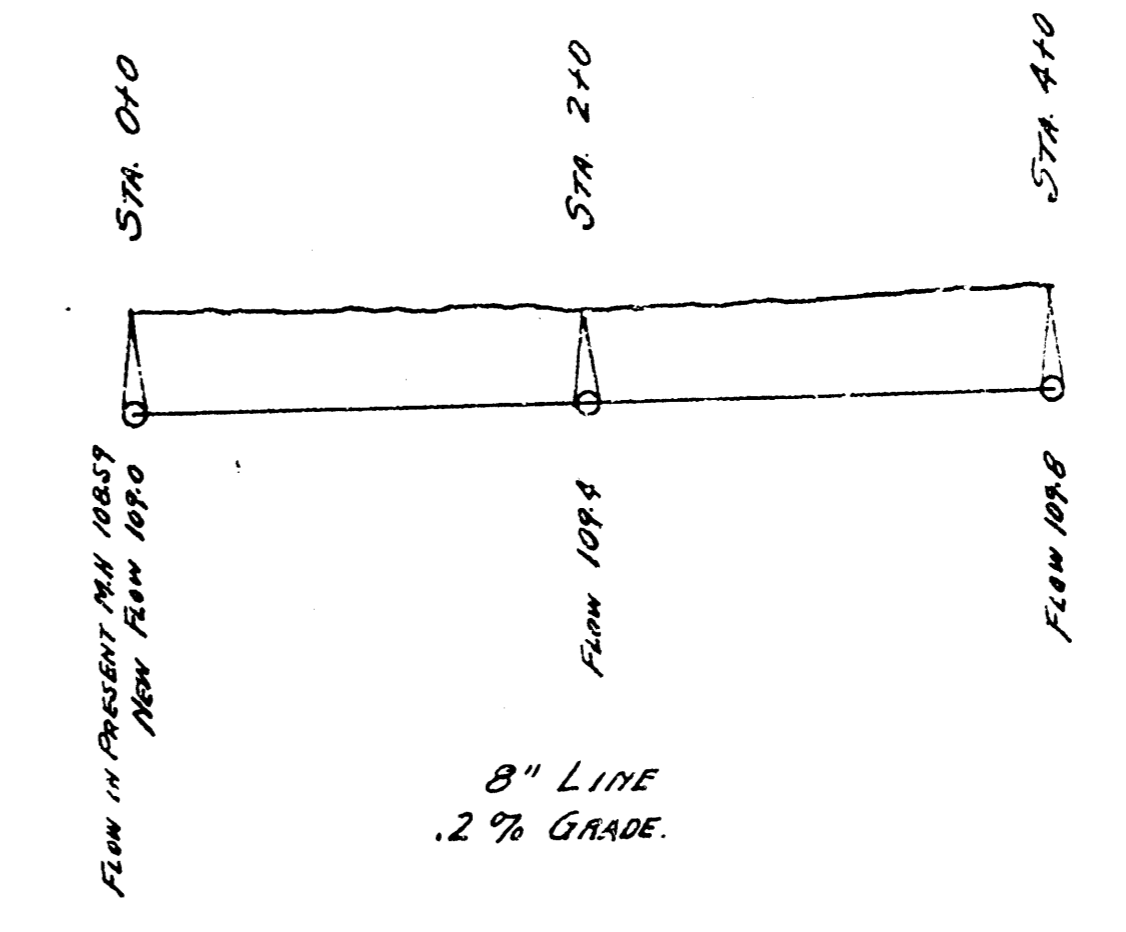
B.M. 107.80 B. in Buckridge N. Side Lincoln, W.Cb.



LAT. A., DIST. 4.
S.S. No. 12

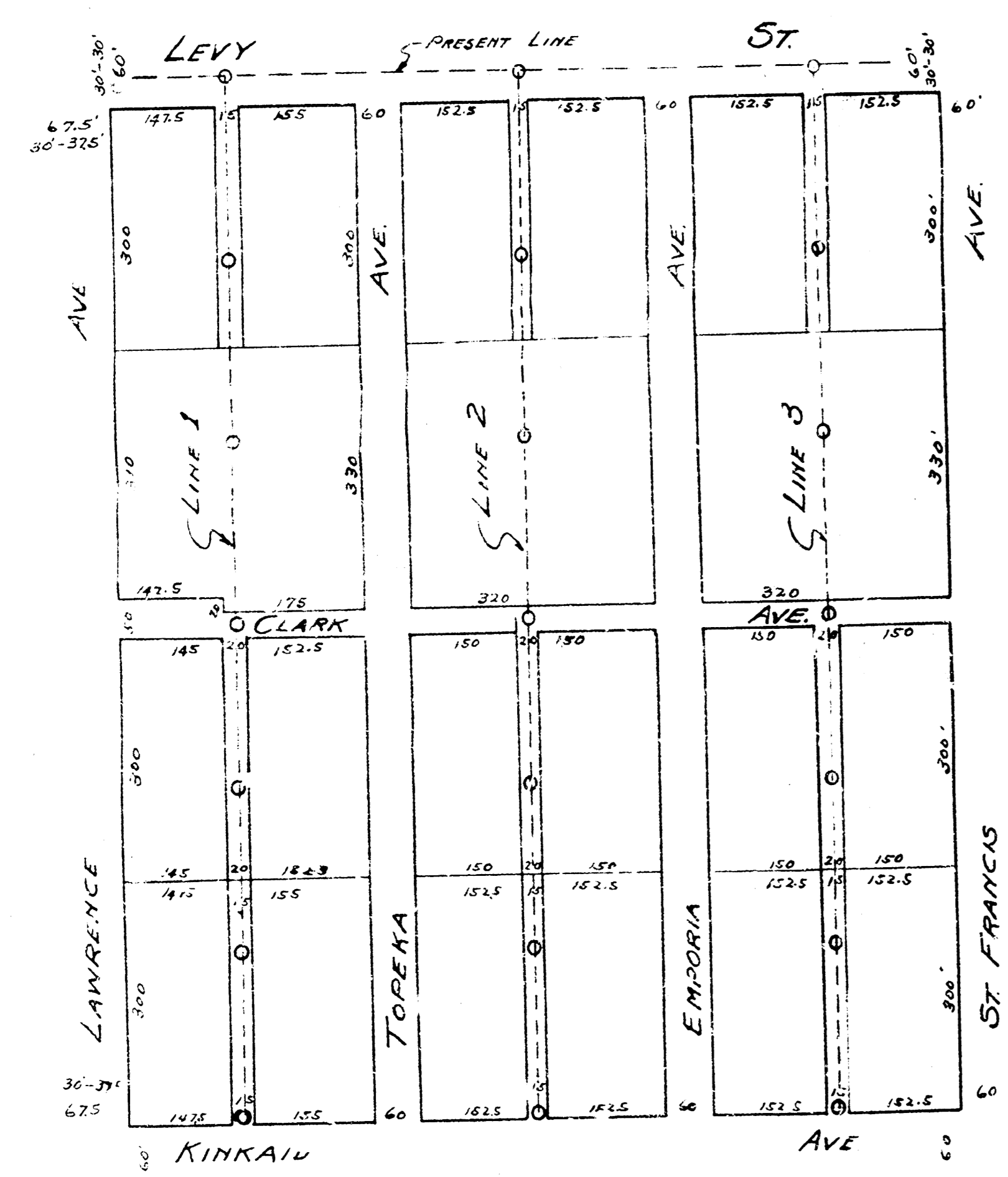


B.M. 122.73 K in Kensler, c/c. walk W. SW. cor. Volutia & Central.



LAT. R., DIST. D,
S.S. No. 12

B.M. 99.60 Stand. R.W. cor. Lawrence & Levy.



LAT. 11, DIST. C.,
S.S. No. 20.

