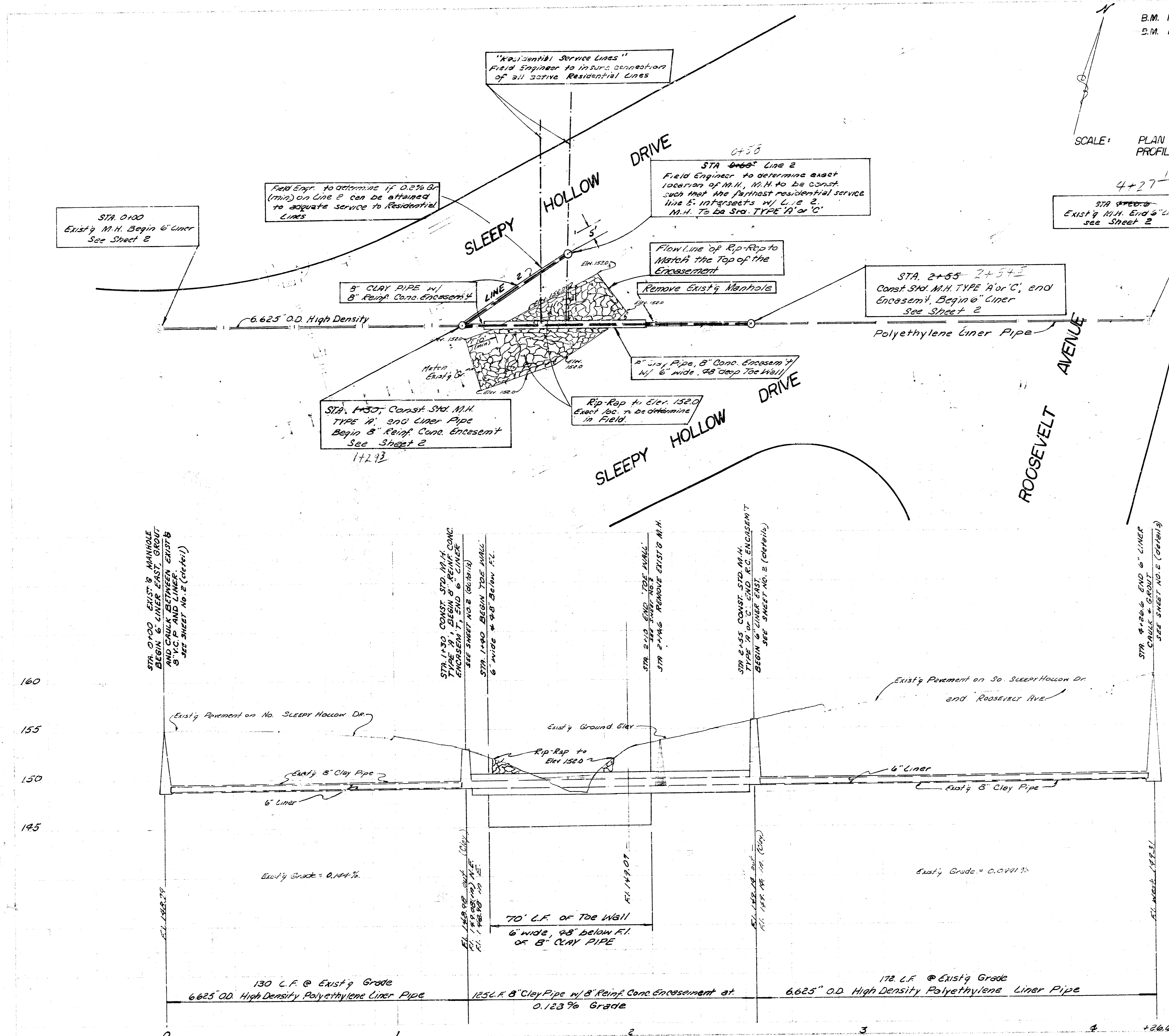


B.M. 15256 NW corner, bottom of conc. step, west side of house, 3402 E. Elm Ave,  
 B.M. 15753 SW corner, bottom of conc. step at house 3712 Sleepy Hollow Drive,

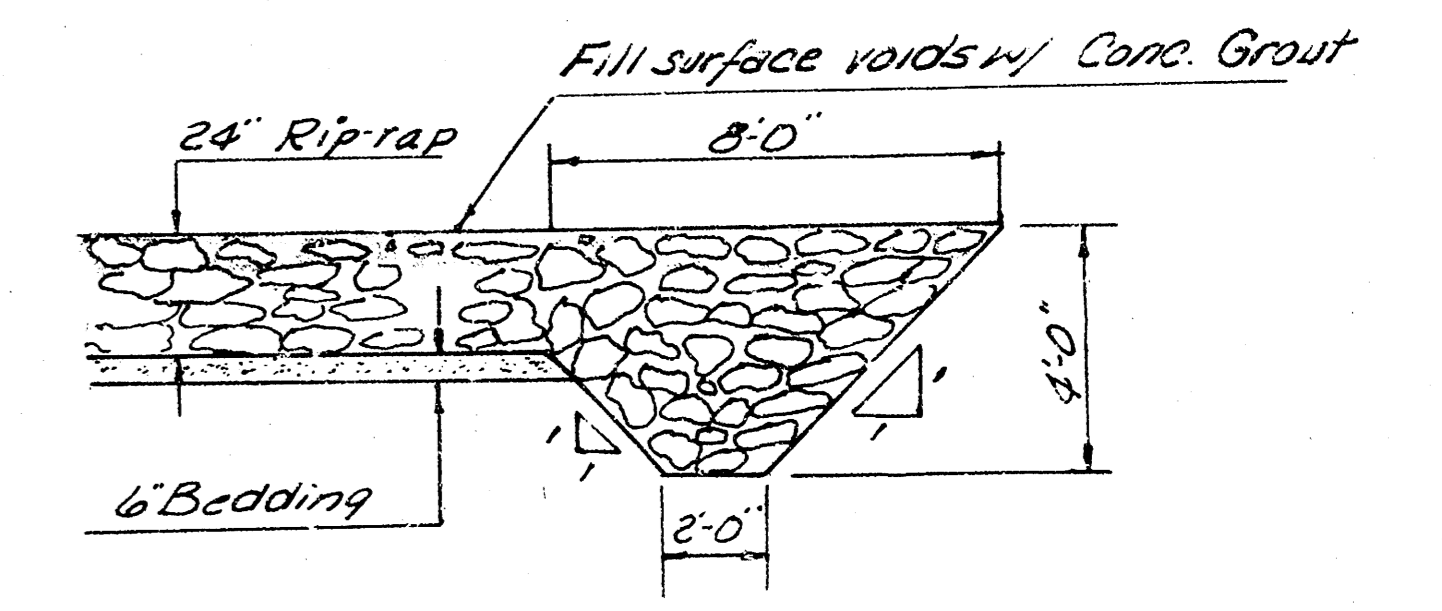
SCALE: PLAN 1" = 20'  
 PROFILE 1" = 5' Vert.  
 1" = 20' Horz.



Backfill in Channel Area to be Excavated Material Compacted to Original Density. This work will not be paid for directly but shall be included in Unit Price Bid for the Pipe.

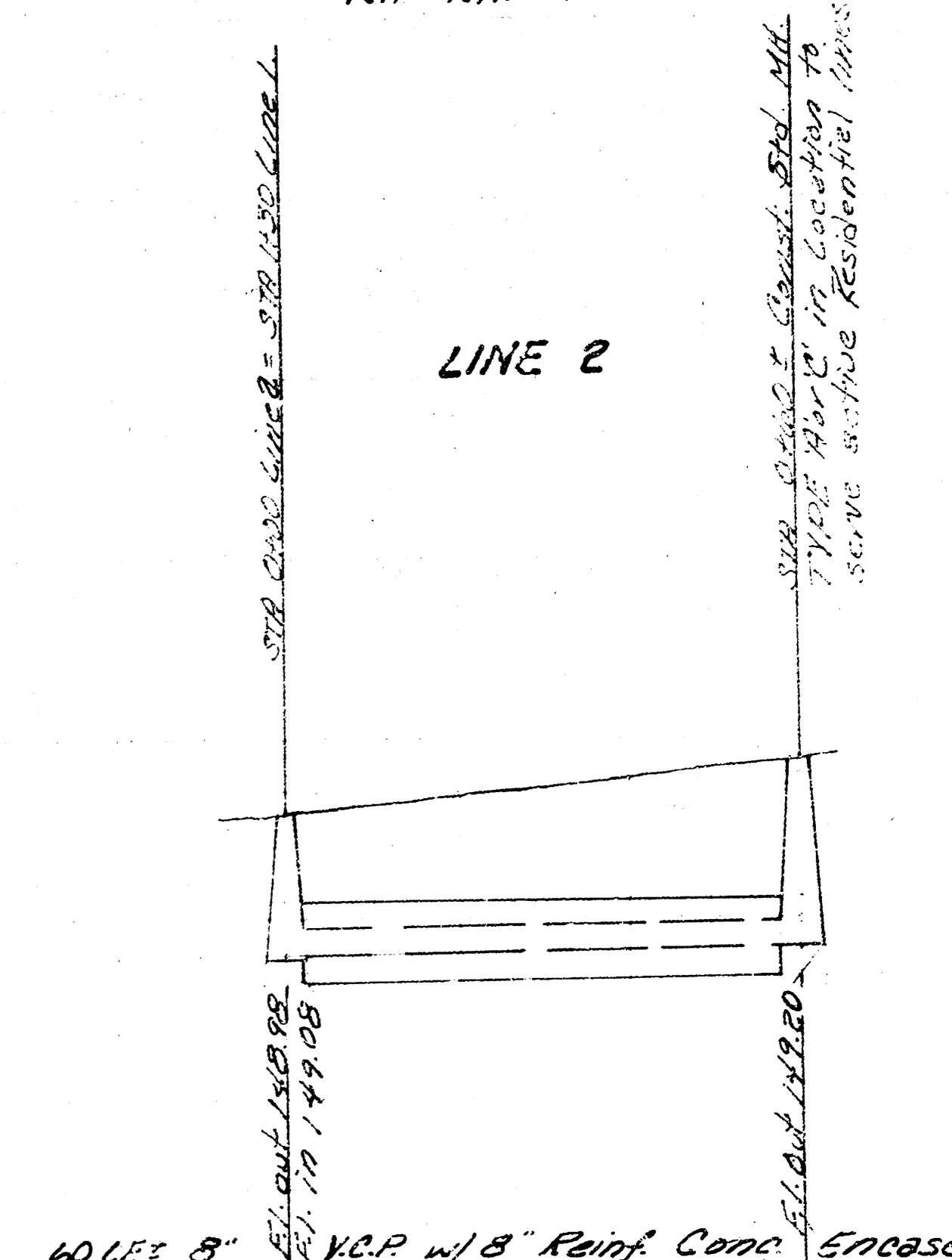
Rip-Rap to be const. to an elev. of 152.0 at this length of 10' on downstream + 5' on up stream side. Rip-rap to parallel channel. Approx. 230 sq. yds. rip-rap required.

Rock use to be constructed on "upstream" & "downstream" end of rip-rap. Rock use will not be paid for directly and shall be considered as "subsidiary" to price bid/sq. yd. of Rip-Rap.



RIP-RAP DETAIL

LINE 2



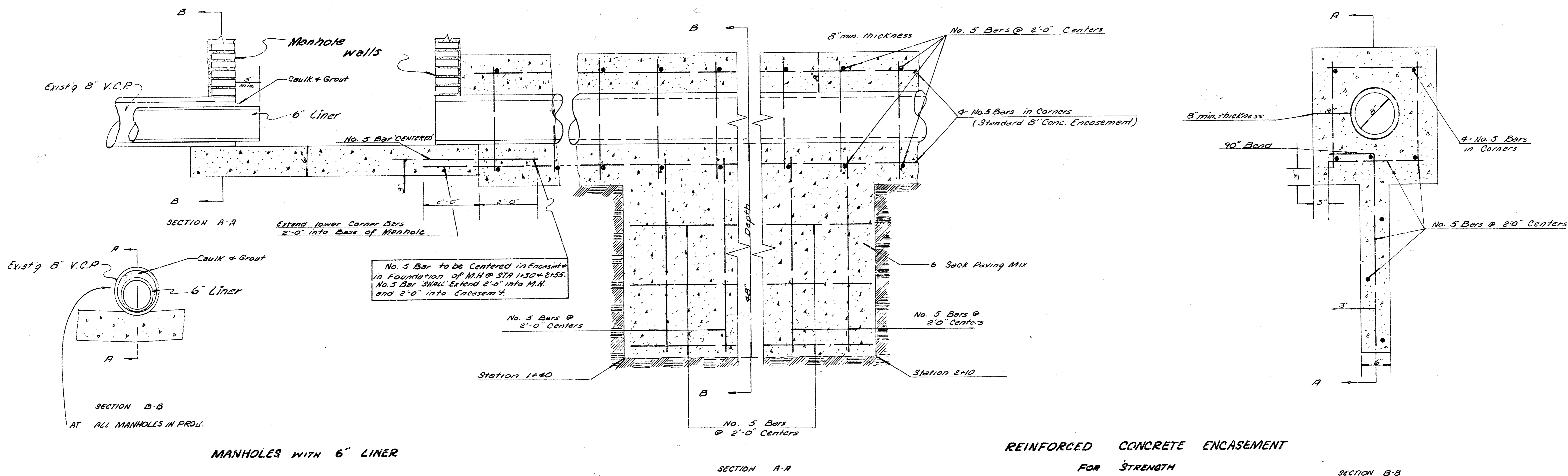
60 L.F. 8\"/>
 0 @ 0.20% Grade + 60

note - Field Engineer to determine if 0.20% gr. can be obtained w/ service for active RES. LINES.

As built 3-2-77 sheet 1 of 2

RECONSTRUCTION of a PORTION of  
**LAT. 8, DISTRICT D, S.S. NO. 12**  
 IN SLEEPY HOLLOW DRIVE BETWEEN YALE AVE. AND ROOSEVELT AVE.  
**CITY OF WICHITA, KANSAS**  
 R. W. LINN CITY ENGINEER  
 DATE \_\_\_\_\_ PROJ. NO. DBKL 575062

D.L. KRUGER  
 256



MANHOLES WITH 6" LINER

REINFORCED CONCRETE ENCASEMENT FOR STRENGTH

Reconst of Portion of  
 LAT 8, DIST. D. S.S. NO. 12  
 Proj. No. DBL 575062  
 sheet 2 of 2

No Scale