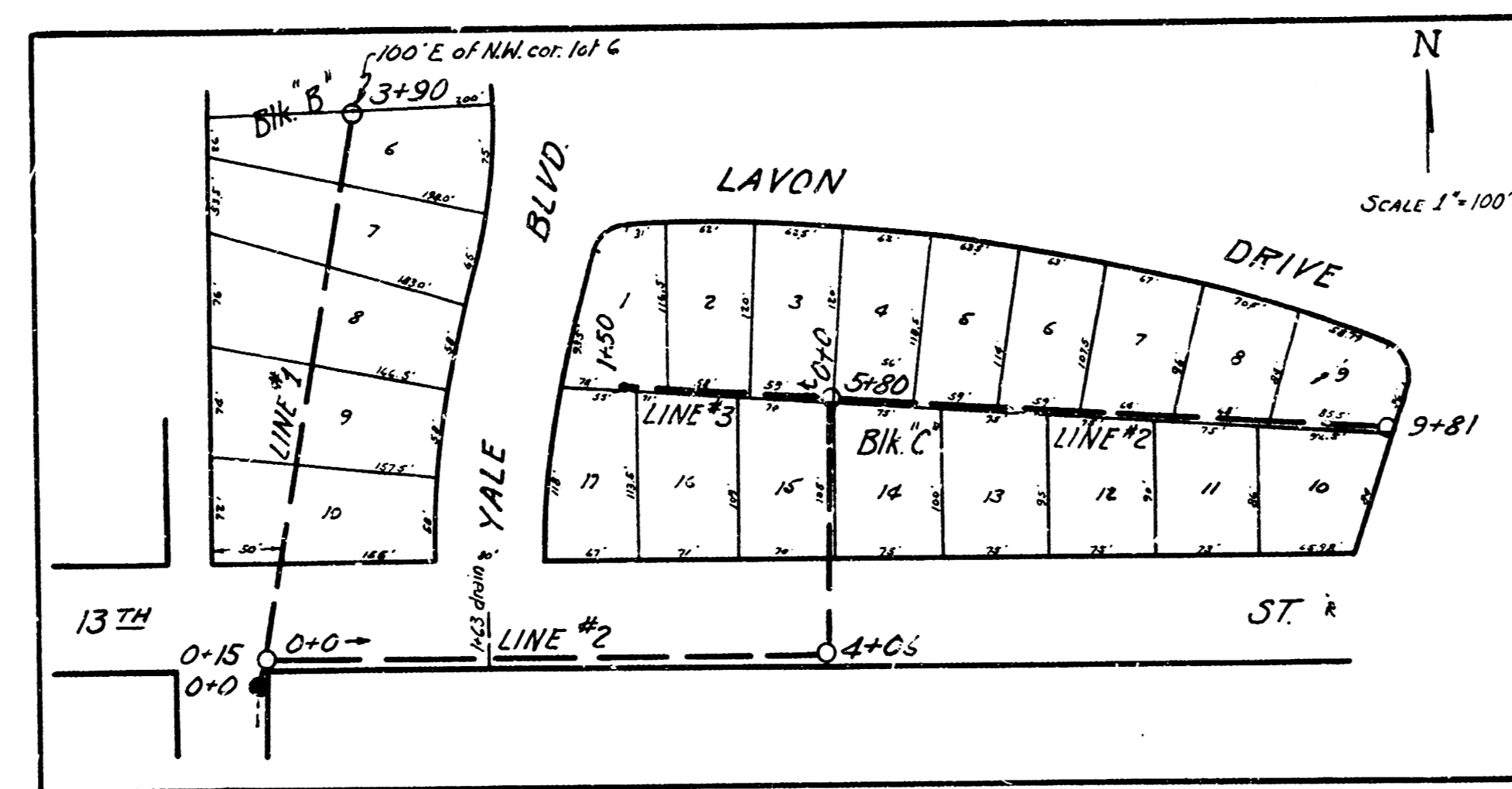
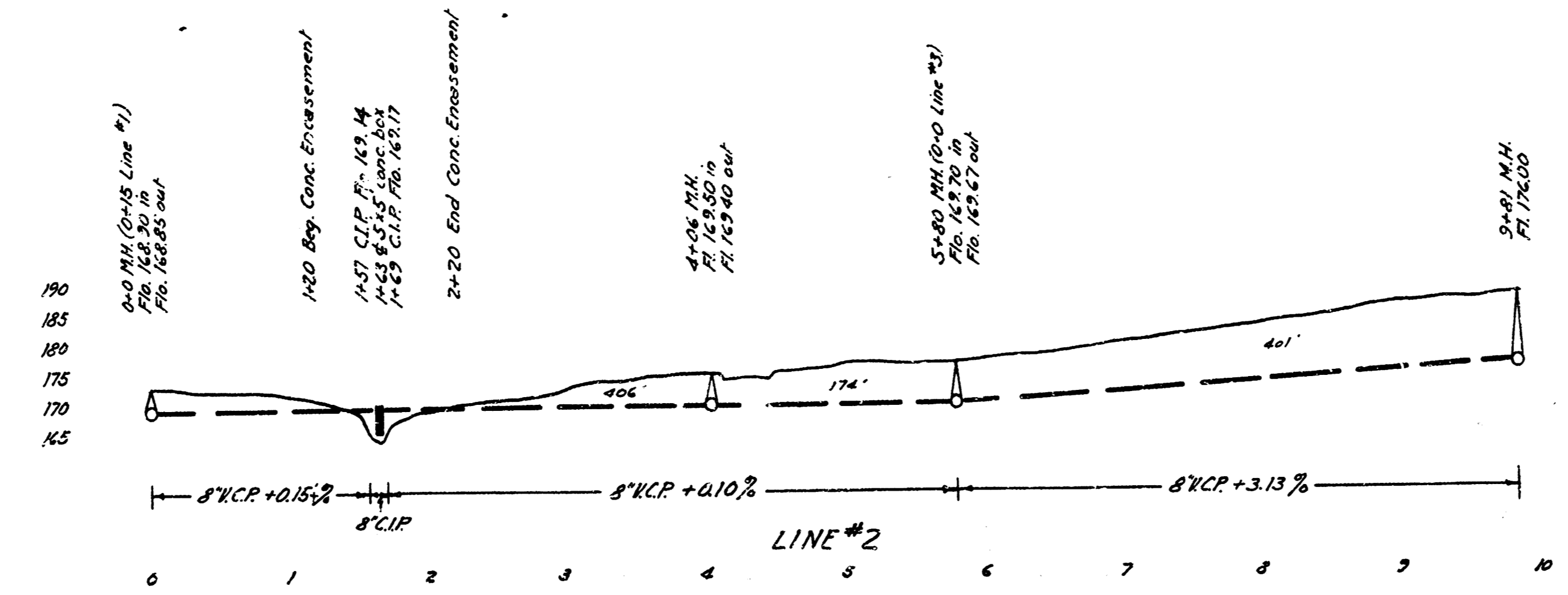
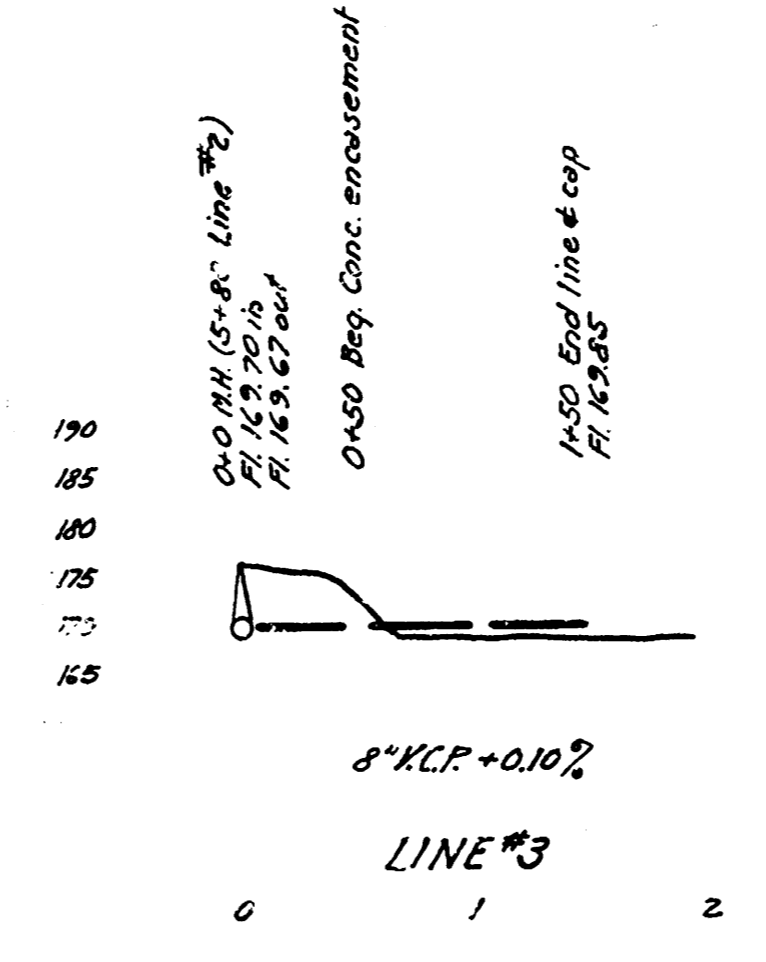
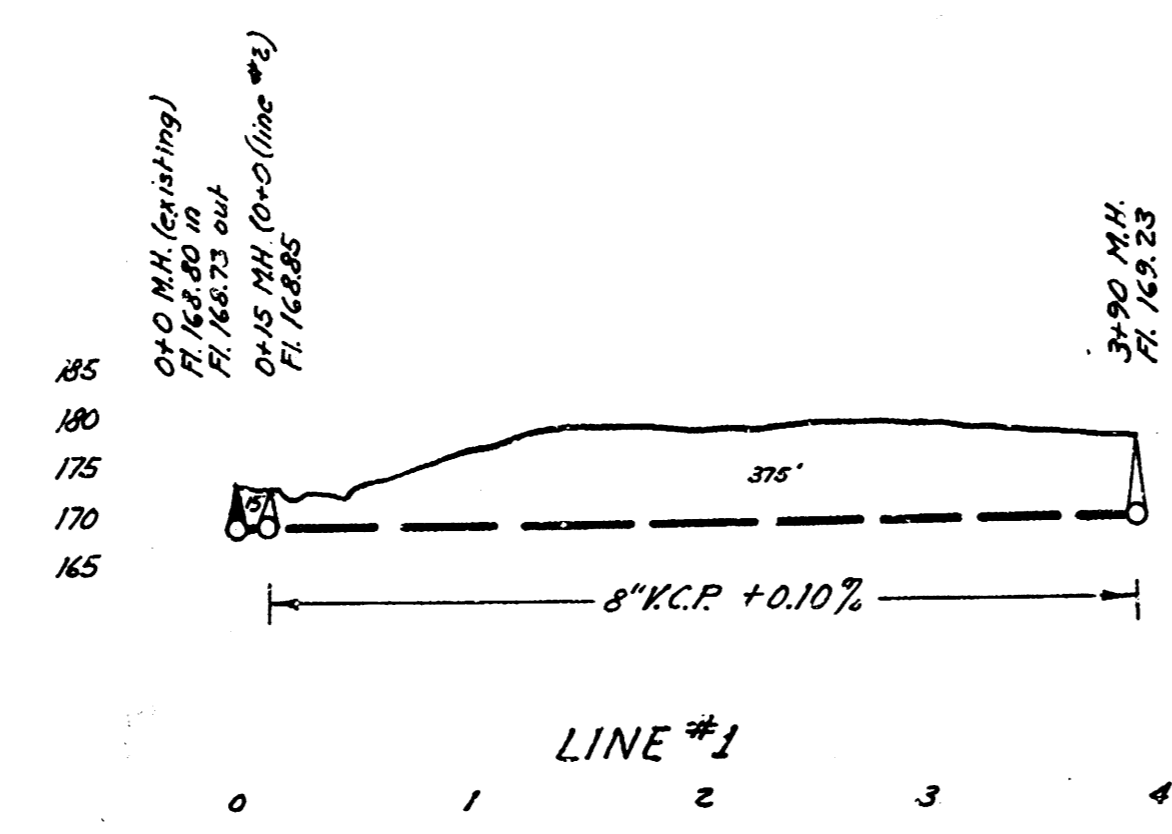


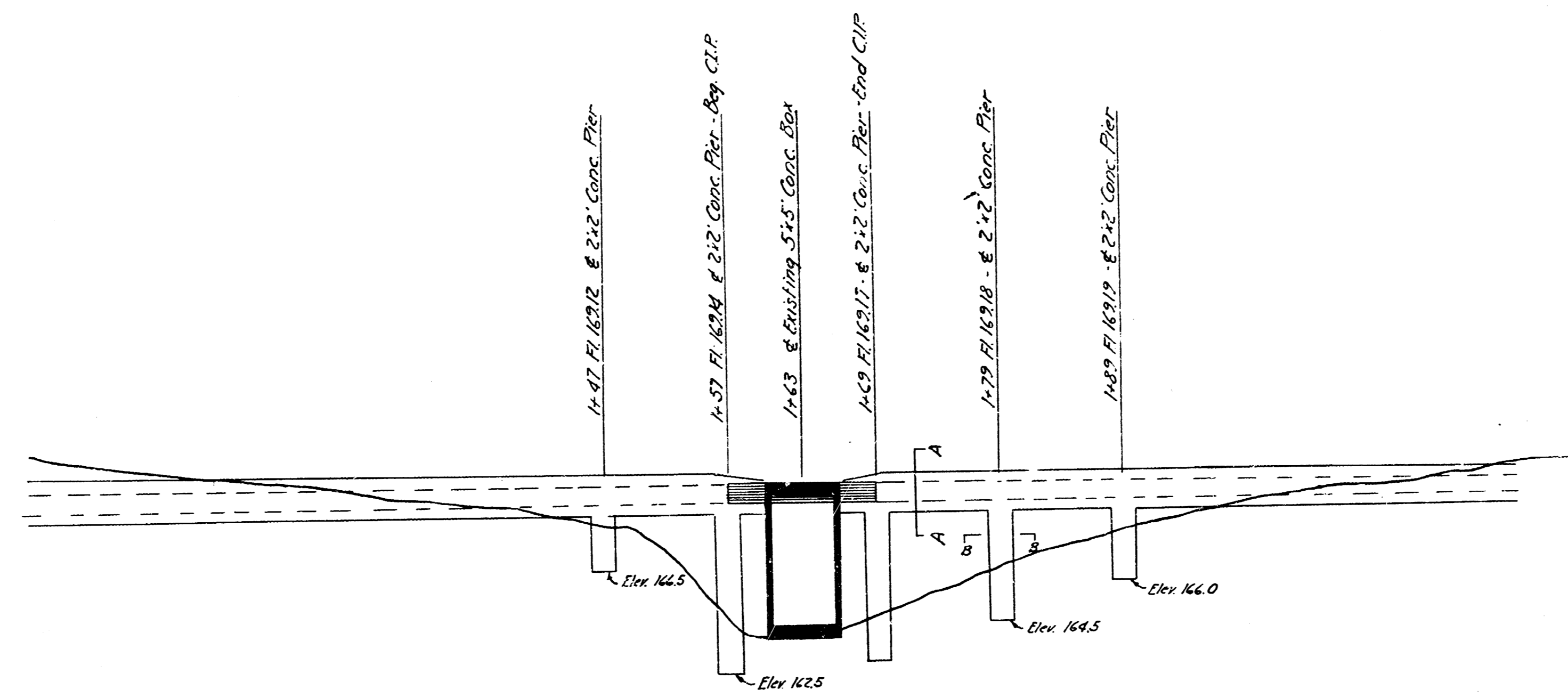
B.M. Elev. 169.80 N.E. cor. of N. end of Conc. 5'x5 Box



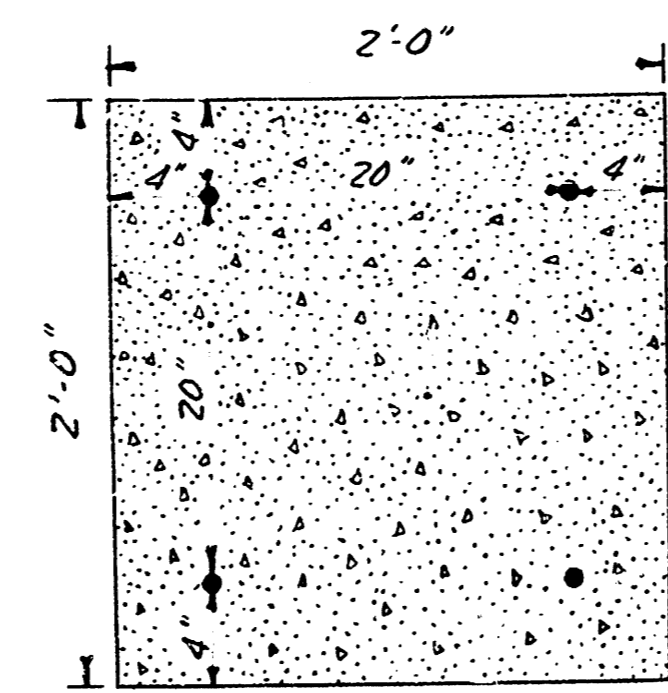
LAT. P. DIST. E, SS #12
 WICHITA, KANSAS
 ENGINEERING DEPARTMENT
 P.L. BROCKWAY - CITY ENGINEER
 JULY 1942



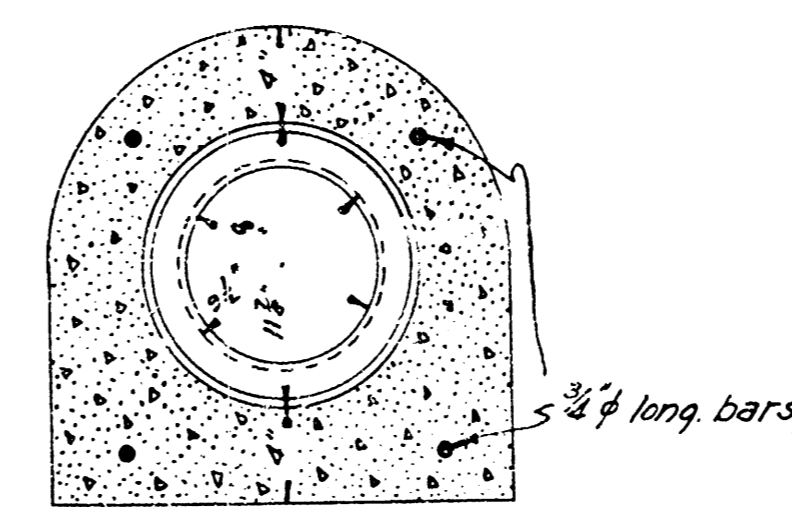
LAT. P. DIST. E. S.S. #12
WICHITA, KANSAS



ELEVATION OF CREEK CROSSING
STA. 1+63 - LINE #1
SCALE $\frac{1}{4}$ " = 1' VERT.
SCALE $\frac{1}{8}$ " = 1' HORIZ.



SECTION B-B
SCALE $\frac{1}{8}$ " = 1"



SECTION A-A
SCALE $\frac{1}{4}$ " = 1"
LINE #1 Sta. 1+20 to Sta. 2+20
LINE #3 Sta. 0+50 to Sta. 1+50