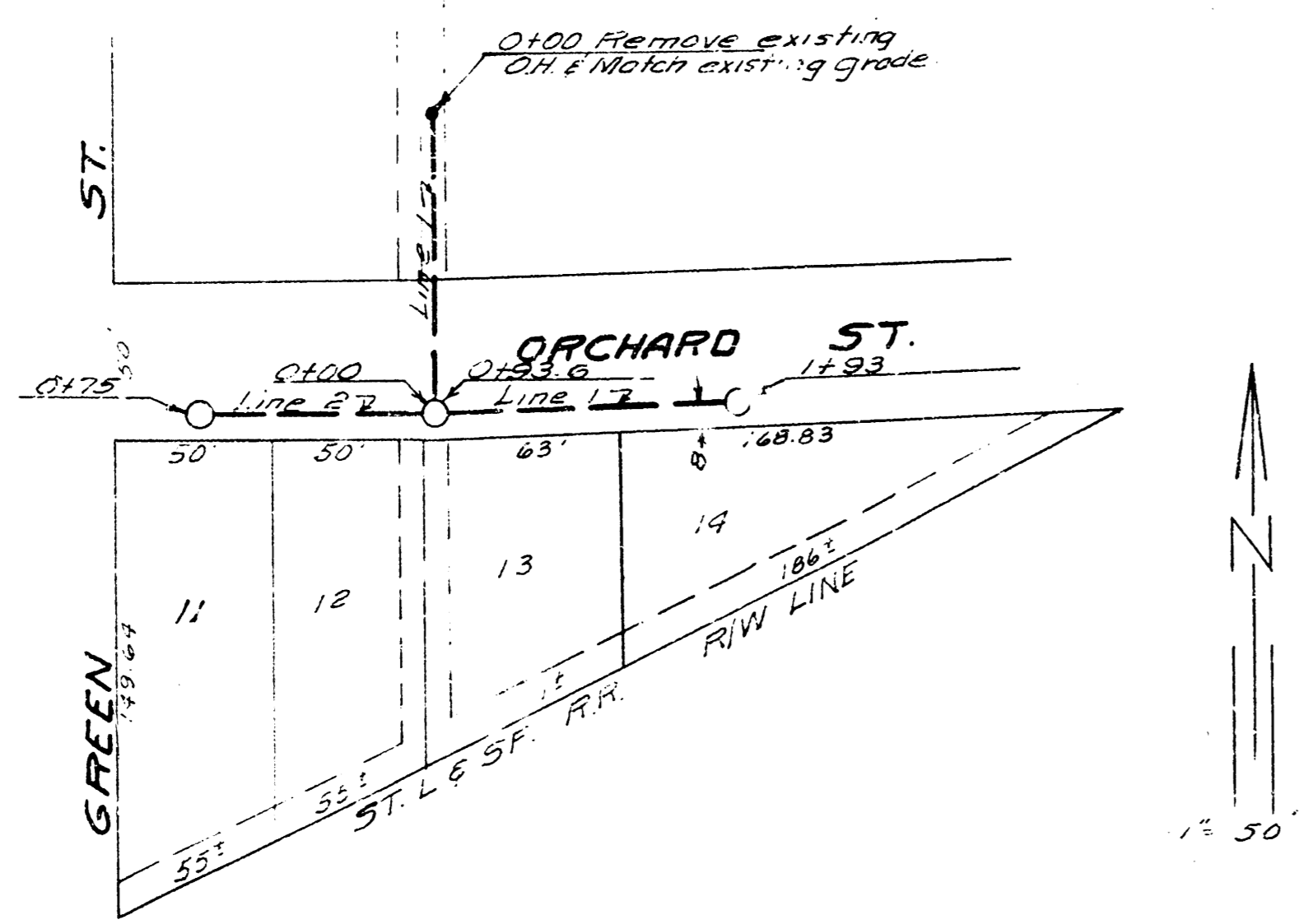
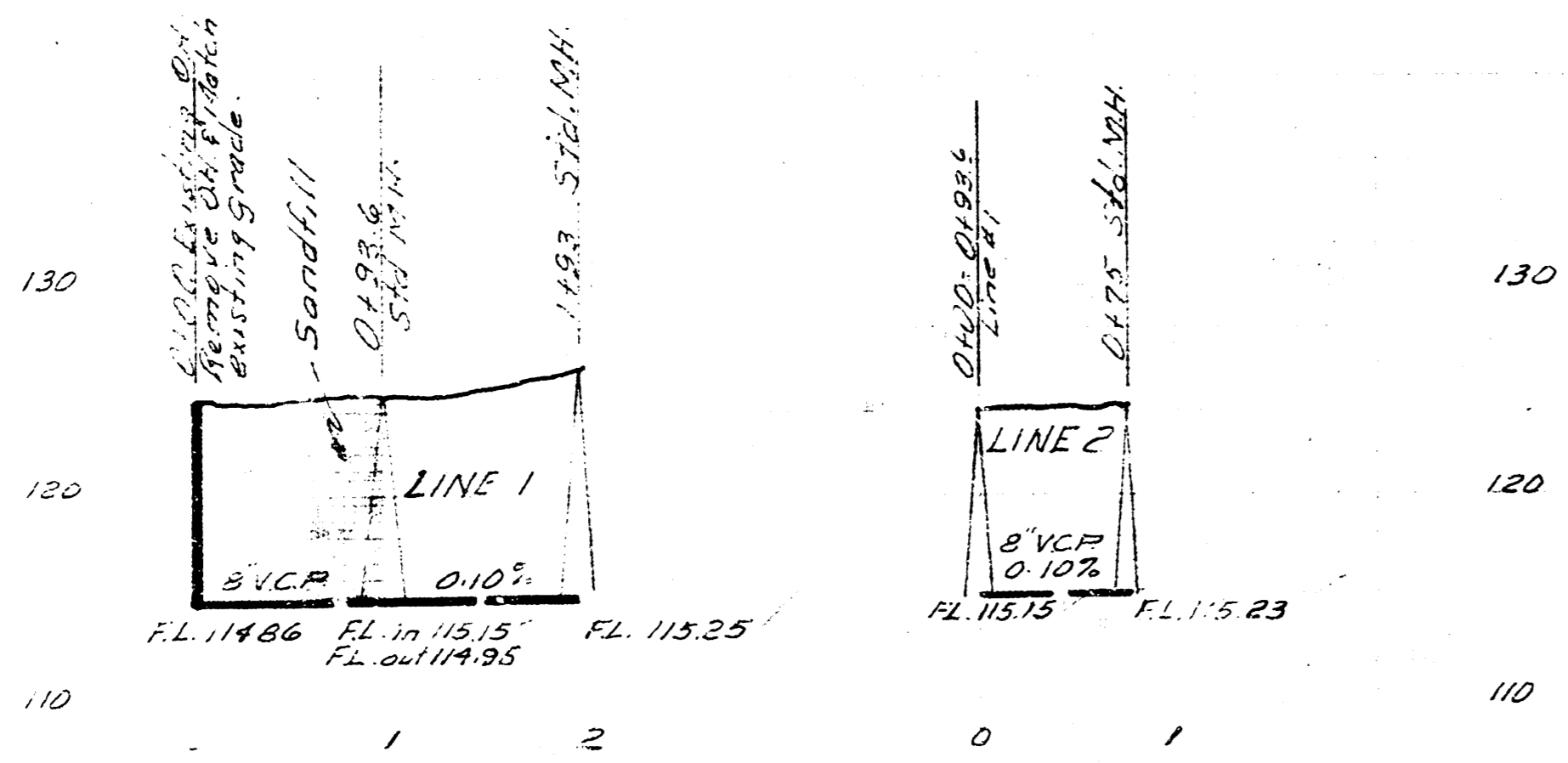


PART OF C.F. FOWLER ADD.



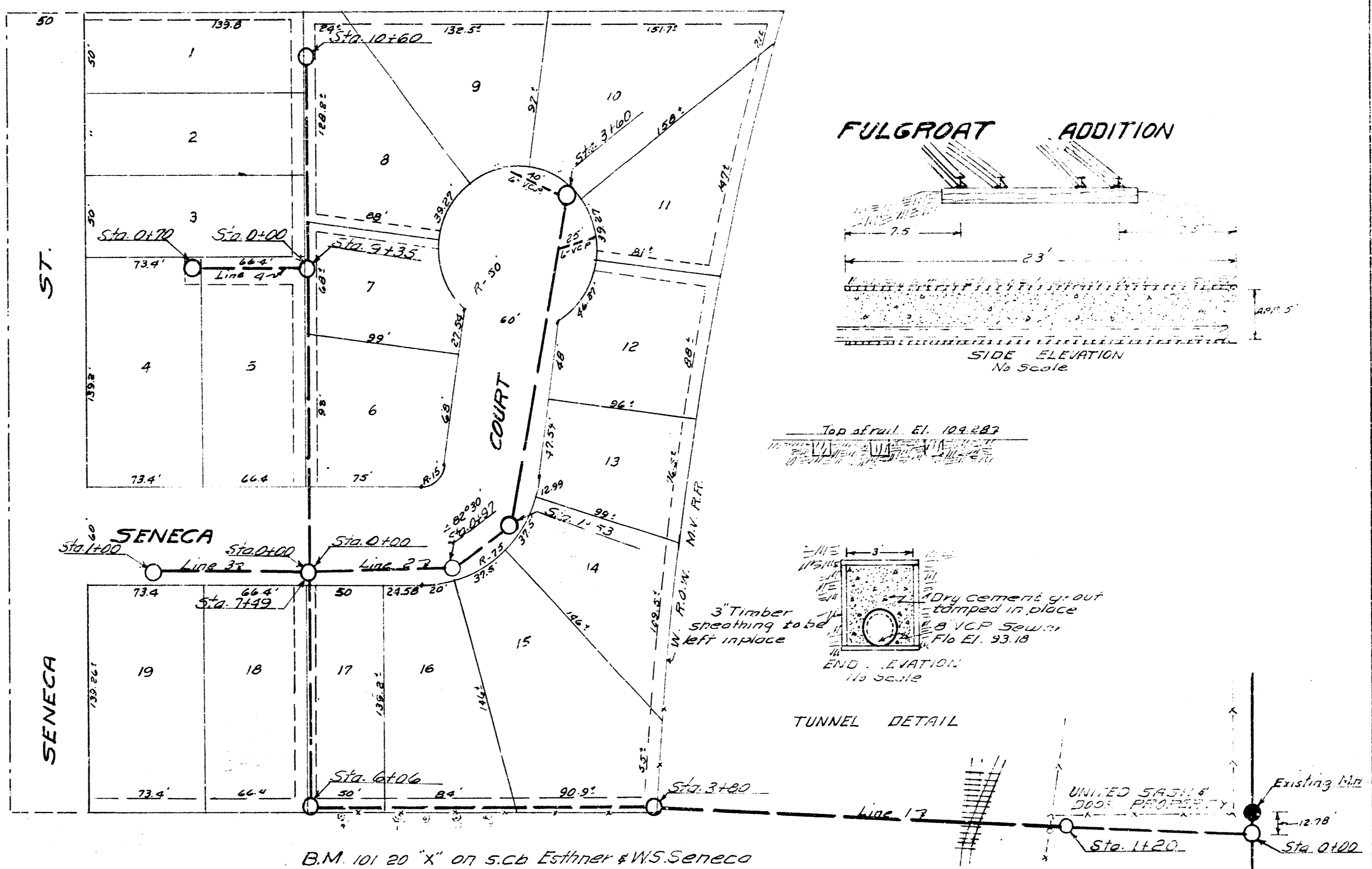
B.M. 123.98 NE cor. conc. walk to house
827 No Green

C. 24-54
D. 24-54
McClain
C. 24-54
McClain
C. 24-54
McClain

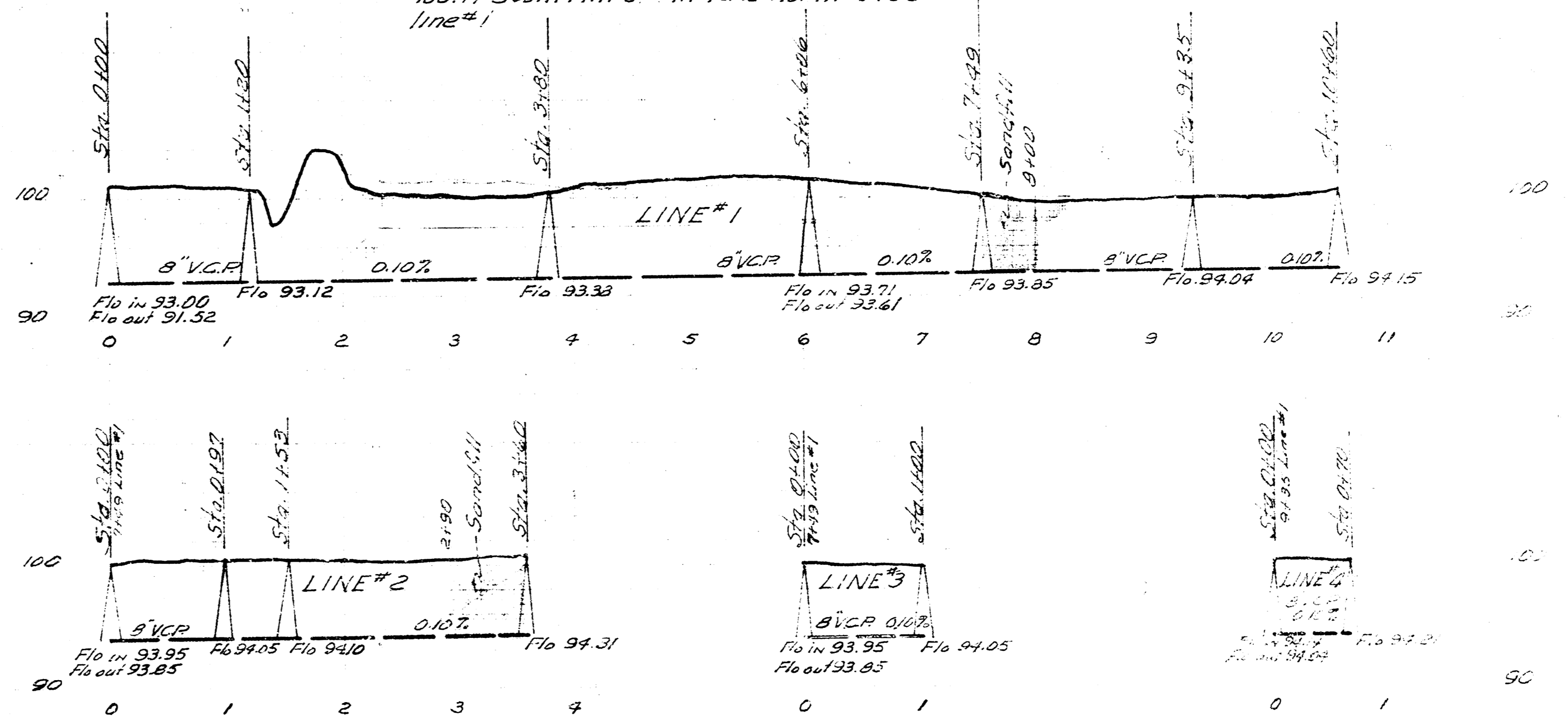


C. 24-54
D. 24-54
McClain
C. 24-54
McClain
C. 24-54
McClain

LAT 25 DIST. E. SS. 12
CITY OF WICHITA KANSAS
B.E. SMITH CITY ENGINEER
Proj. No. C. 24-46



B.M. 101.20 "x" on s.c.b. Esthler & W.S. Seneca
100.73 South rim of M.H. 12.78 north of 0100
line #1



LAT 4 SS 21
CITY OF WICHITA KANSAS
B.E. SMITH CITY ENGINEER
Proj. No. C. 24-52