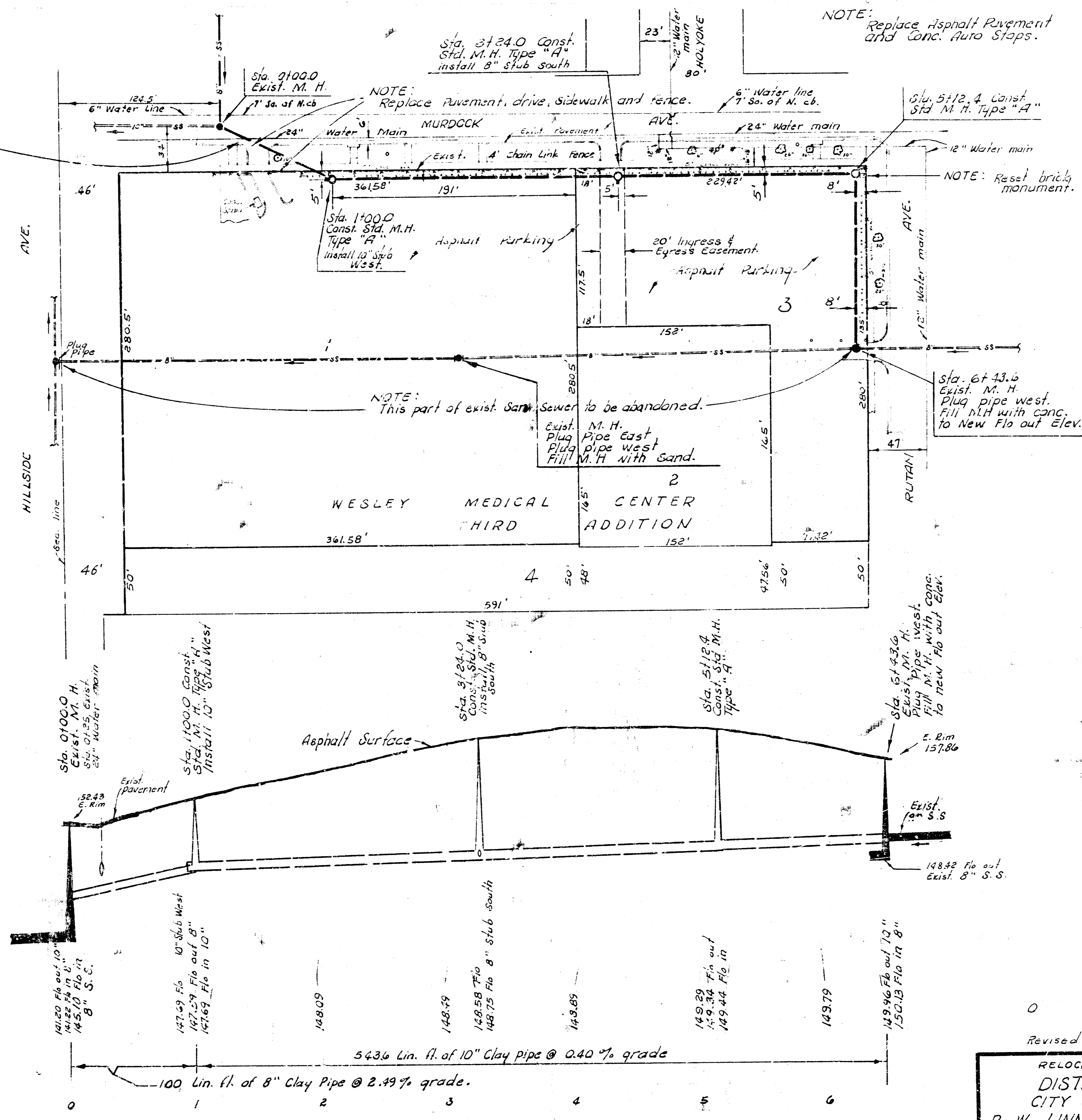


3. M. 151.31 NE cor. conc. Porch Allergy Clinic 611 N. Hillside.  
 3. M. 149.60 NE cor. conc. C.O.F.W. M.H. S.E. Hillside & Murdock.

**NOTE TO CONTRACTOR:**  
 Contractor is to excavate at Sta. 0+25 prior to construction so that Field Engineer can determine elevation of existing 24" water main.



Plan Scale 1" = 40'  
 Profile Scale 1" = 4' Horiz.  
 1" = 5' Vert.

**NOTE TO CONTRACTOR:**  
 This project will be constructed under the supervision of the CITY ENGINEER and conforming to the SPECIFICATIONS of the CITY OF WICHITA. THE CONTRACTOR will reimburse the City of Wichita for all cost of Engineering, Plans, and Inspection.

10-9-74

APPROVED FOR THE CITY ENGINEER  
 D.E.T.



Revised 10-2-74  
**RELOCATION OF A PART OF  
 DIST. M, S. S. NO. 12  
 CITY OF WICHITA, KANSAS**  
 R. W. LINN — CITY ENGINEER  
 DEC. 1973 PROJECT NO. BHK503069

S. Hillside

69

160

155

150

145

140

160

155

150

145

140

14 2 5 5