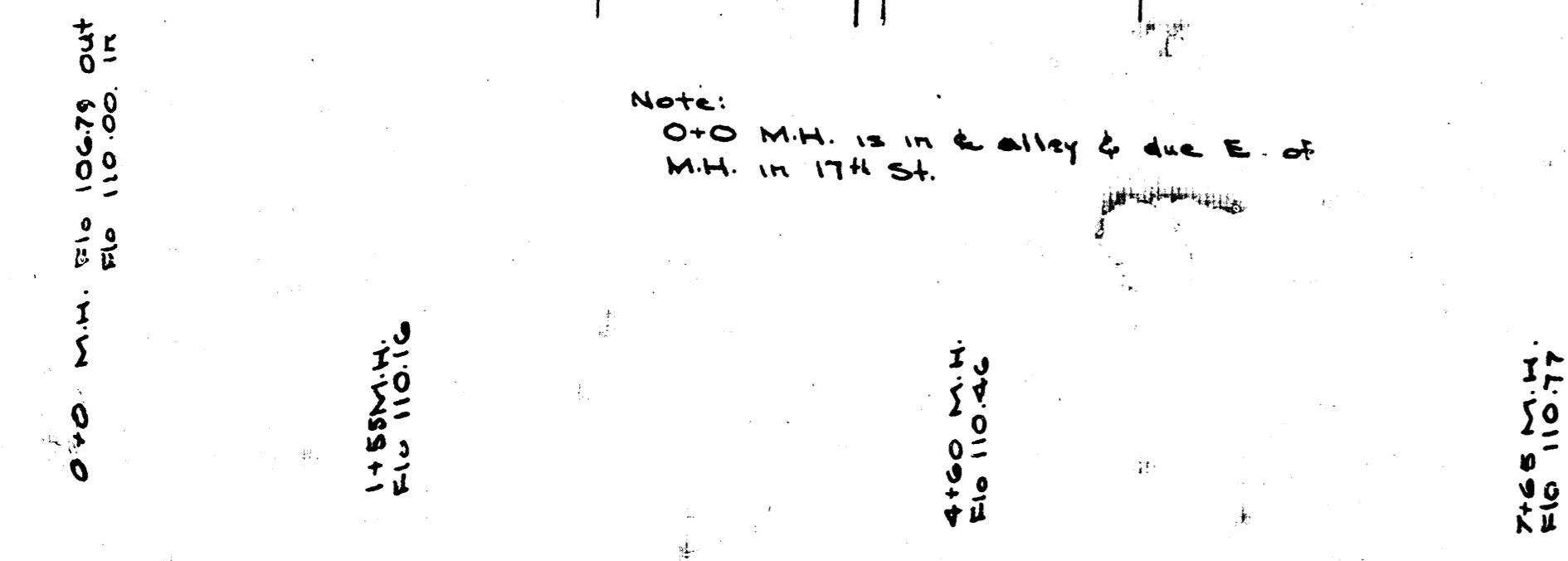
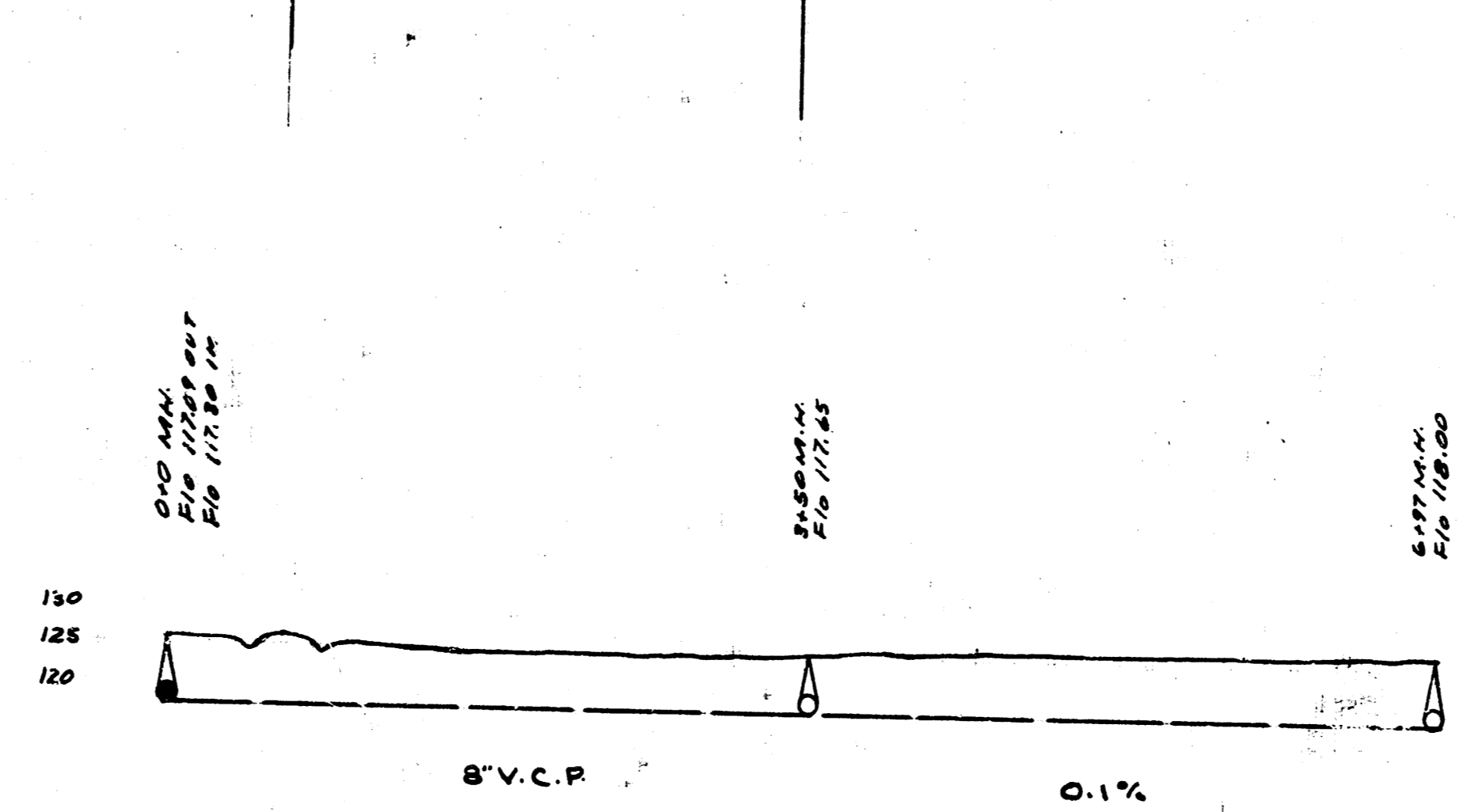
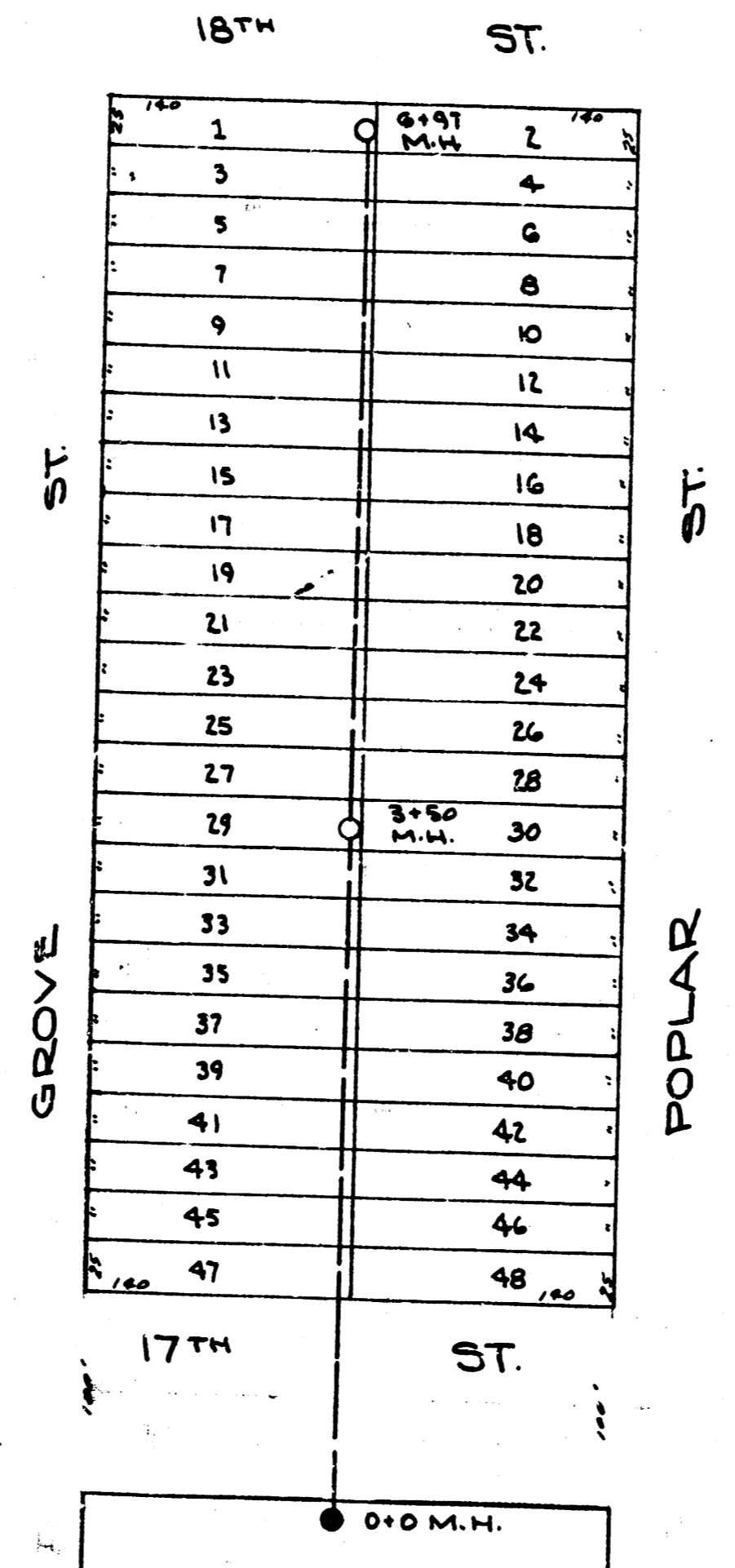


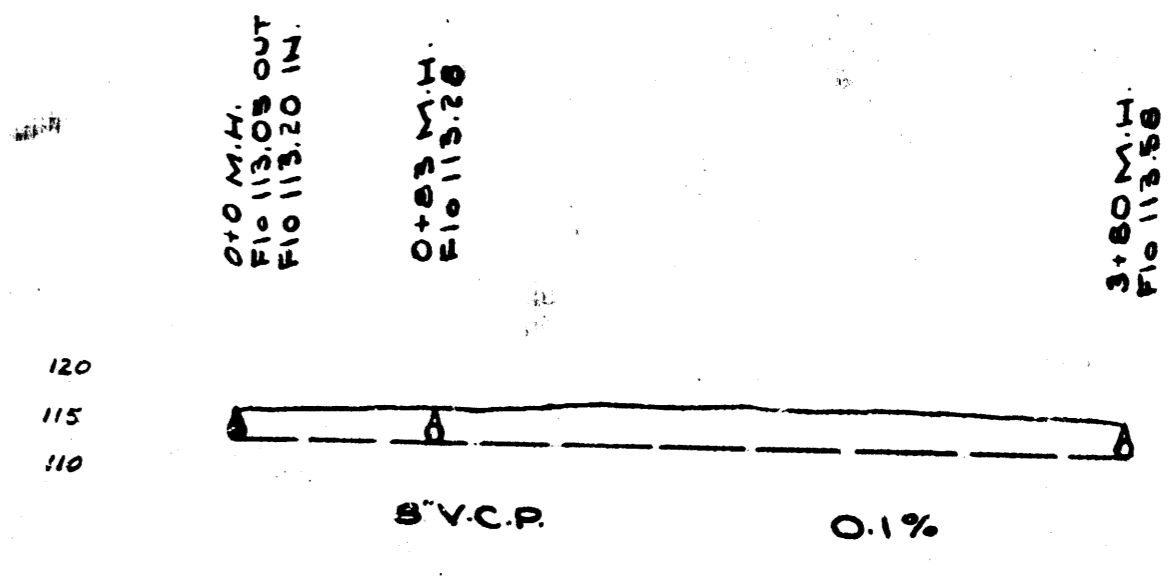
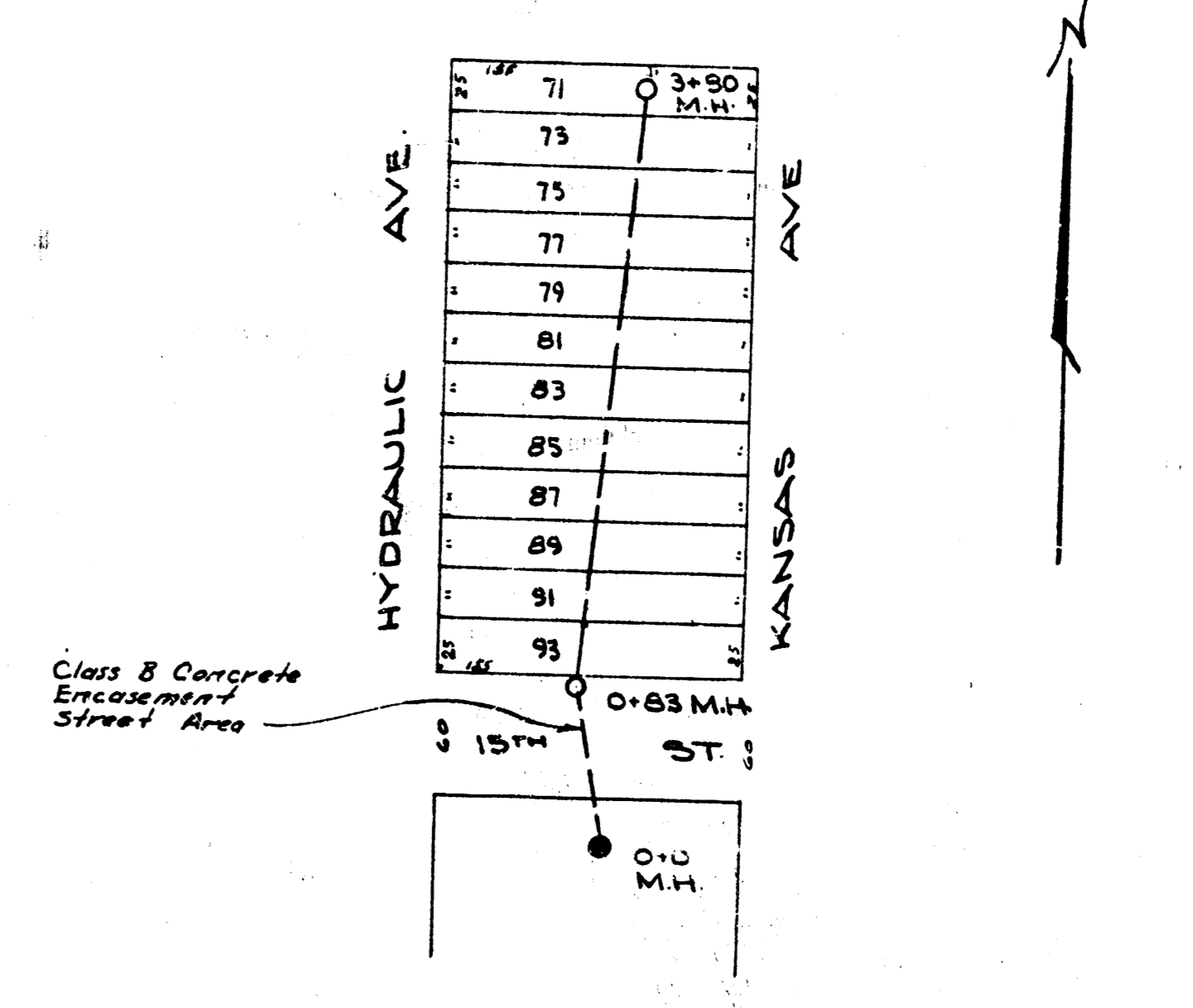
Note:
 0+0 M.H. is in E. alley & due E. of
 M.H. in 17th St.



BM 118.93 'K' in Keeler Ctr. Wk. So. NE Cor. 17th & Mosley
 BM 119.50 Step bench in P.P. N.S. 18th & E.S. Alley W. Mosley
 LAT. 29, S.S. #20



BM 120.80 R.R. Spike W.S. P.P. S.S. 17th Bet. Grove & Poplar
 BM 128.60 SW. Cor. Conc. Headwall Cave Entrance Rear Ho. 1856 Grove.
 LAT. 5, DIST. T, S.S. #12



BM 118.44 Top Thim C Hyd. & 15th
 LAT. E, DIST. R, S.S. #12

DEPARTMENT of SERVICE
 CITY of WICHITA, KANSAS
 ENGINEERING DIVISION
 L.K. WHITE - CITY ENGINEER
 SANITARY SEWER
 SCALE 1"=80' APRIL 1941
 LAT. 29, S.S. #20
 LAT. E, DIST. R, S.S. #12
 LAT. 5, DIST. T, S.S. #12