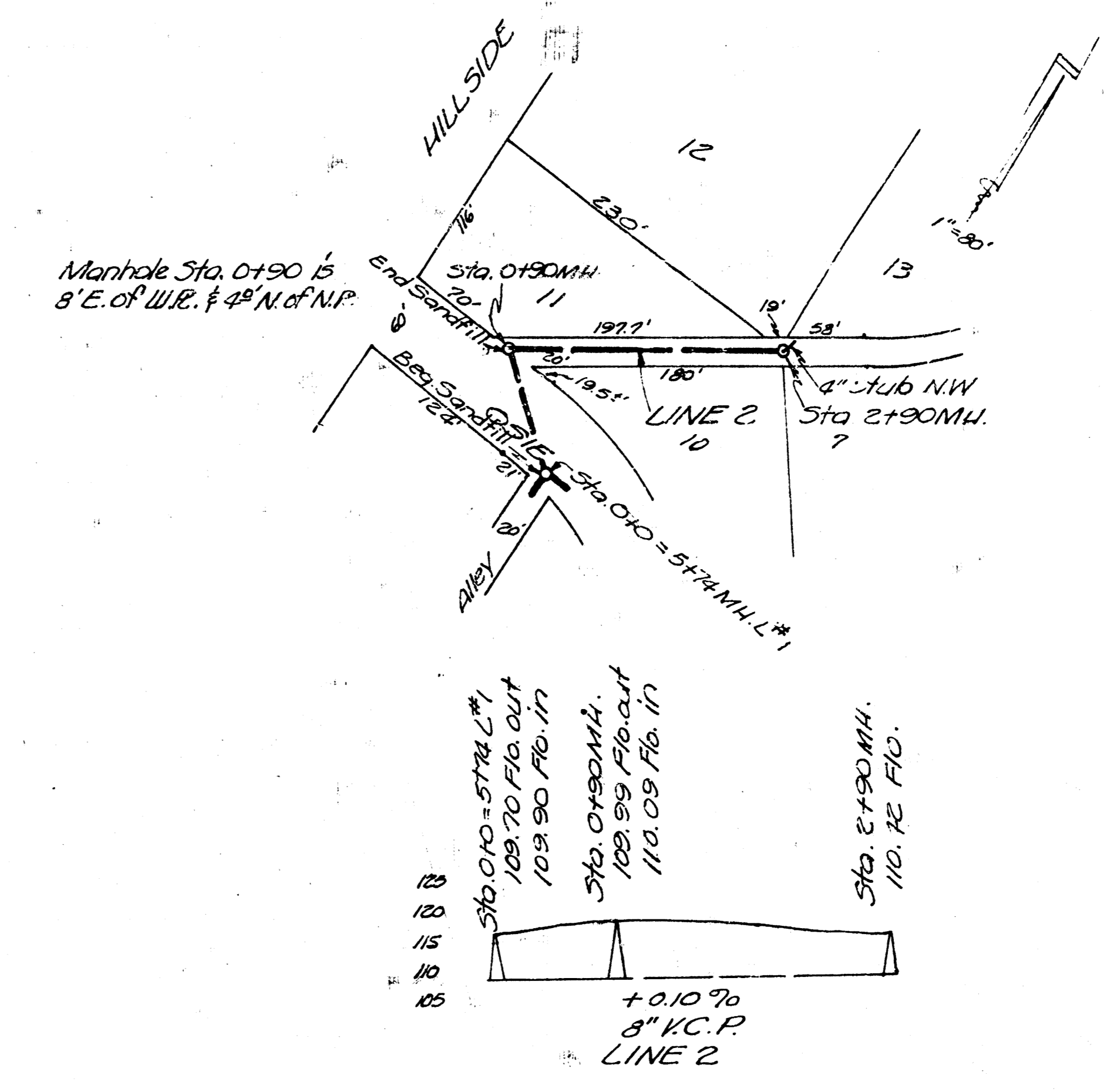
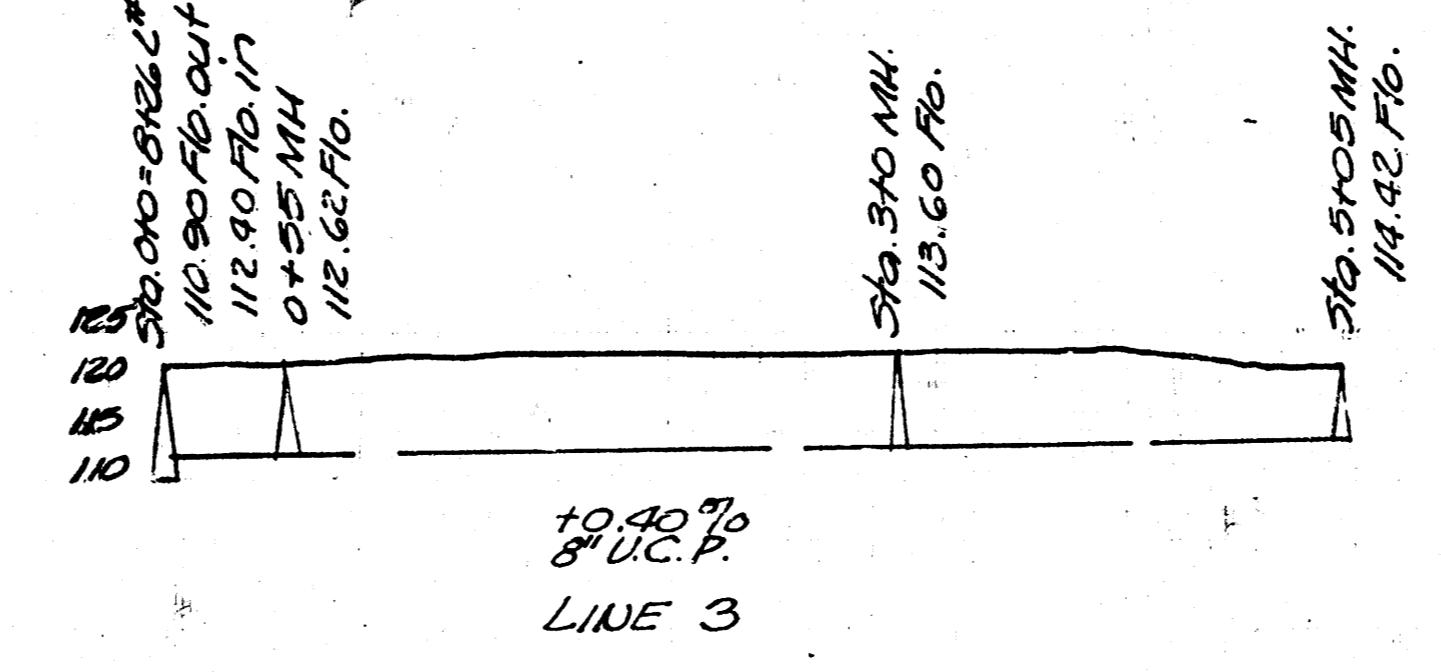
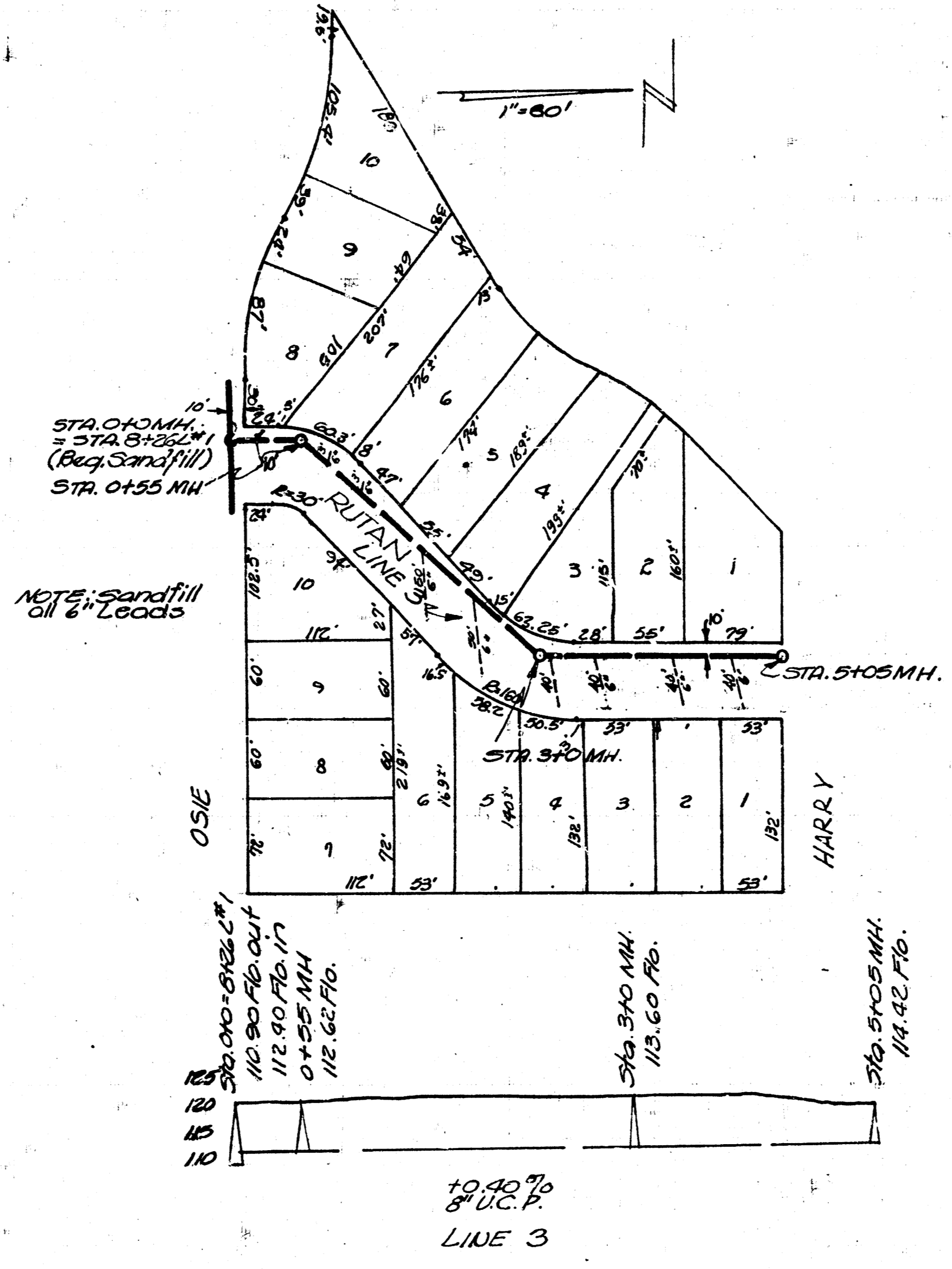
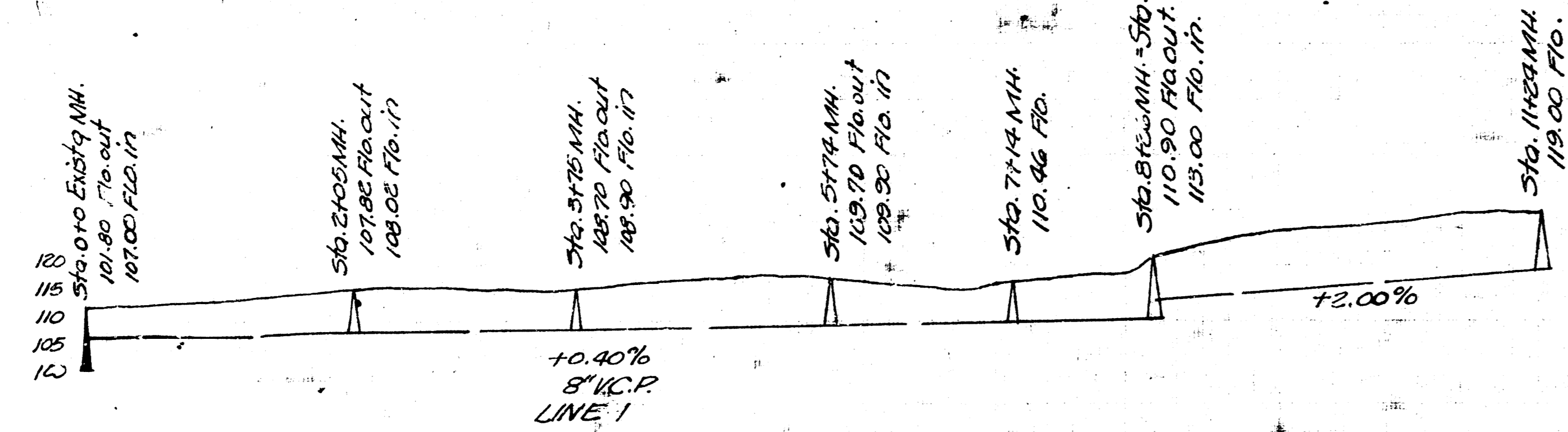


Note: 2" Gas main 19' West of Prop. Line &
 16" Gas main 4' East of E.C.B.
 Power Poles 12' West of E.L.
 Sta. 010 to Sta. 012 MH. (Beg. Pavement Cut & Sandfill)
 (End Pavement Cut Sta. 0109)
 (End Sandfill Sta. 0109)



LAT. 7, SUBMAIN W, SANITARY SEWER #12
CITY OF WICHITA, KANSAS
 L.K. WHITE CITY ENGINEER
 DATE: 9-20-50 PROJ. NO. C20-63