

# SANITARY SEWER IMPROVEMENTS LATERAL 10, DISTRICT 1, SANITARY SEWER NO. 12 TO SERVE SUNNYSIDE VILLAGE ADDITION LOT 2

**CITY OF WICHITA, KANSAS**  
**MICHAEL E. LINDEBAK, P.E. - CITY ENGINEER**  
**PROJECT NO. 468-82850**  
**INDEX CODE 743792**

**GENERAL NOTES**

Contractor will be required to provide a minimum advance notice of twenty-four (24) hours to utility companies prior to starting any excavation as follows:

Kansas One-Call	687-2470
The Contractor must notify the following in case of an emergency:	
Call Center	262-4270 or 263-2061
K.G.&E. Gas	383-8650
K.G.&E. Electric	383-8600
Peoples Natural Gas Company	942-8350 or 263-8161
Southwestern Bell Telephone Company	1-571-2611
City of Wichita Water Department	268-4908
City of Wichita Sewer Maintenance	268-4071

Contractor shall not start work on the project until the project inspector is assigned to the project and is present on the site. Any work done without inspection will be required to be uncovered for inspection.

Rubble from the removal of miscellaneous structures and excess excavation which is to be wasted shall be disposed of on sites to be provided by the Contractor. These sites shall be approved by the Engineer as to suitability, appearance and site location. Locations that, in the opinion of the Engineer, will leave an unsightly appearance will not be approved.

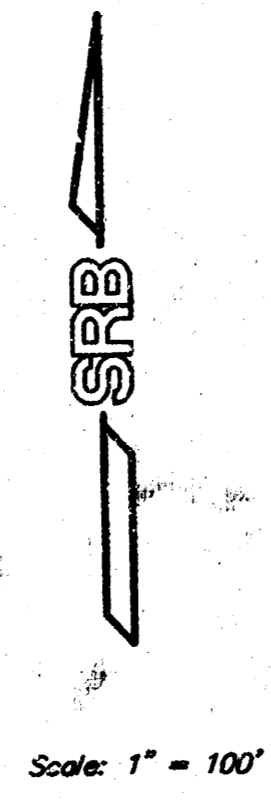
The Contractor shall be responsible for preserving property irons. The Contractor will be required to re-establish any property irons which are damaged or destroyed by his construction operations. Such irons shall be re-established by a licensed land surveyor in accordance with state laws.

The Contractor shall be responsible for maintaining continuous flow of sewage through construction. Contractor's proposed method for maintaining sewage flow shall be approved by the Engineer. Cost of maintaining flow of sewage through construction will not be paid for directly and this cost shall be considered subsidiary to other pay items of work.

All construction involving the 8" sewer system shall be in accordance with City of Wichita Standard Specifications dated March 1998.

Backfill above a depth of 12" over top of sewer pipe shall be compacted to 95% of standard density.

Traffic will not be affected by this project.



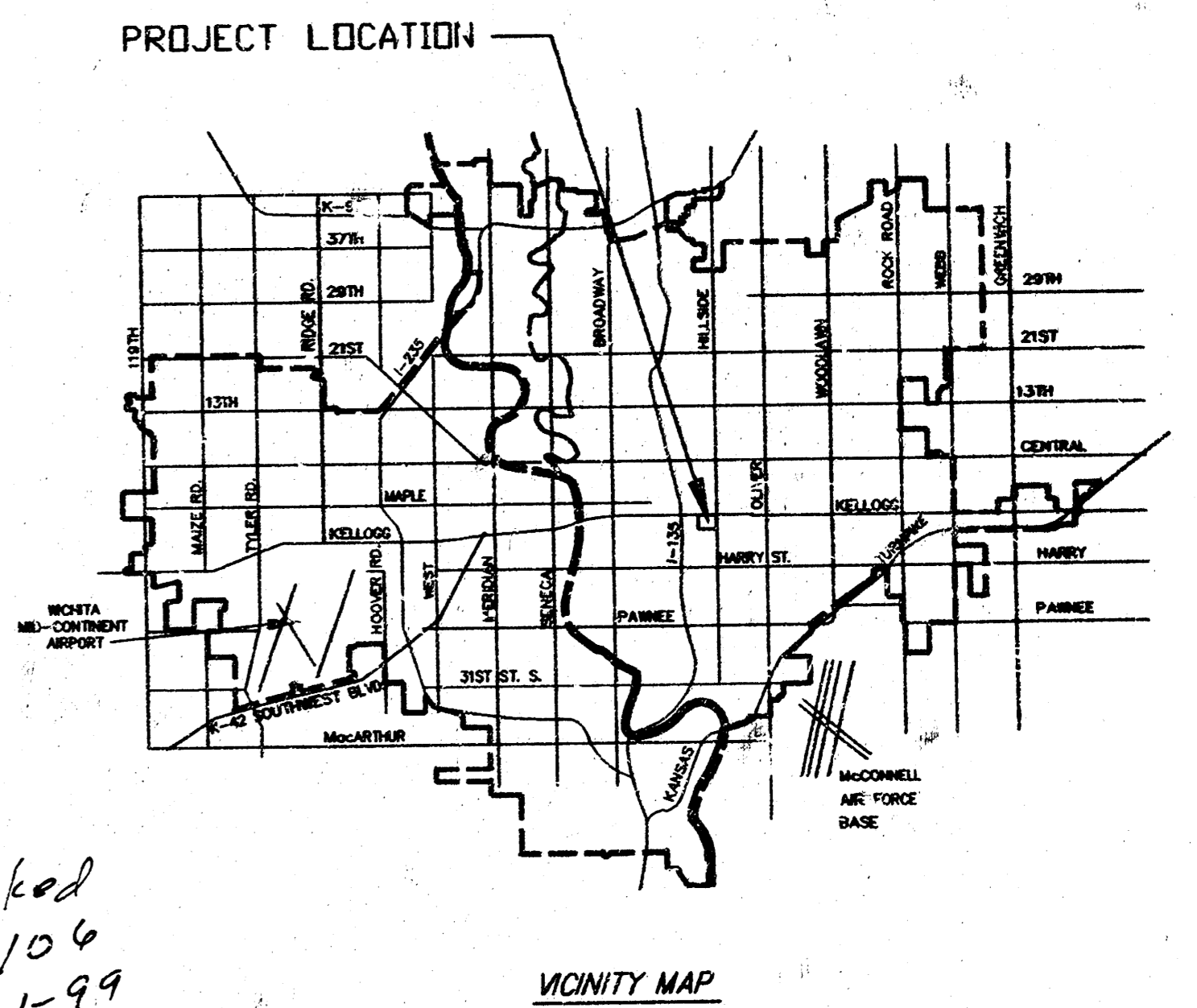
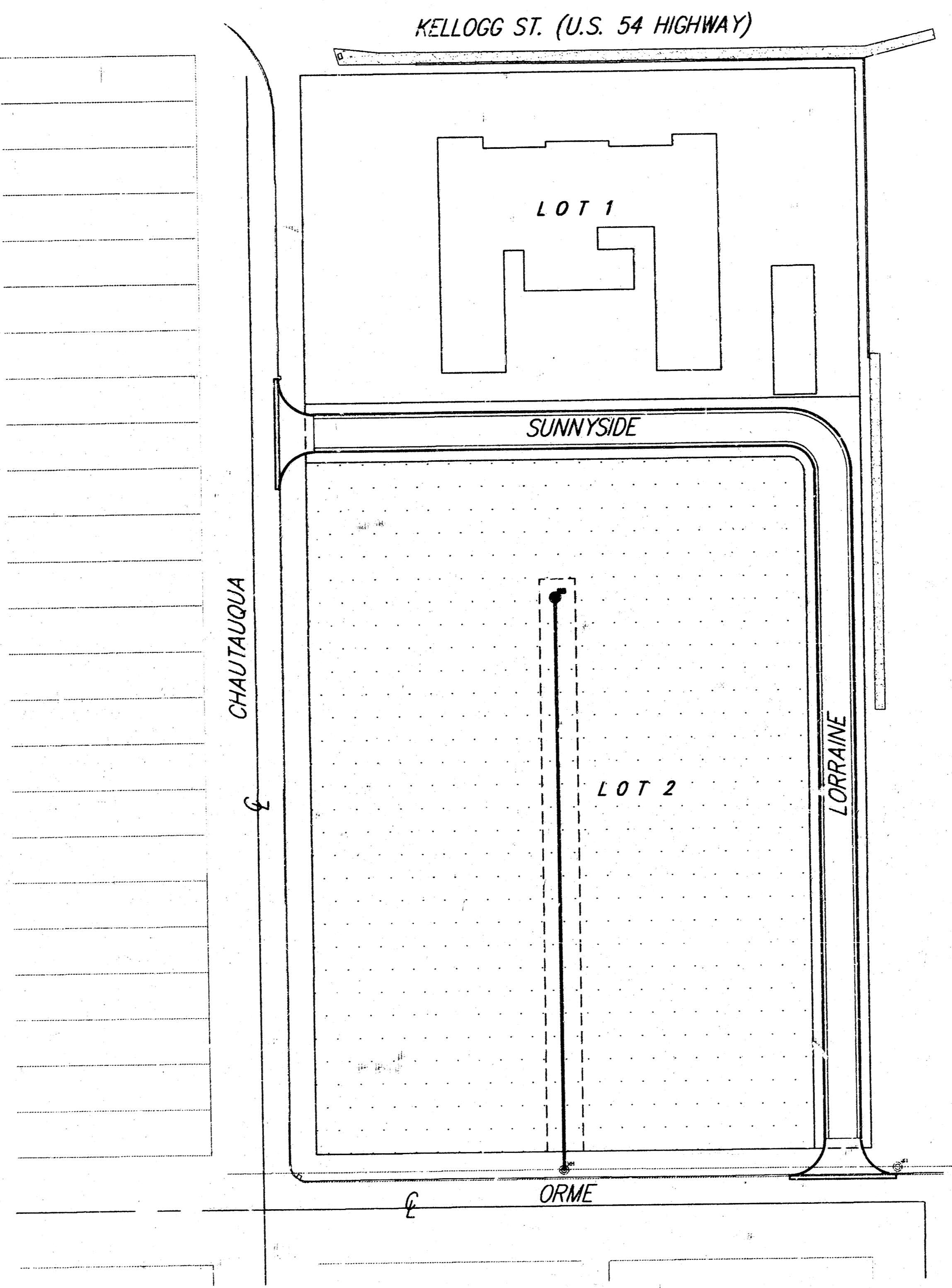
**BENCHMARKS**

CITY OF WICHITA BENCH MARK  
NORTHEAST CORNER OF INTERSECTION  
OF HILLSIDE AND ORME (SOUTH OF KELLOGG)  
CONCRETE BASE FOR SCHOOL CROSSING  
LIGHT POLE.

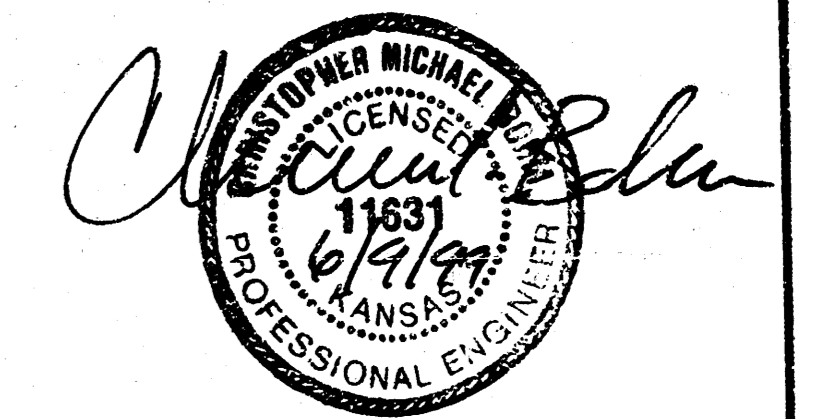
ELEVATION: 110.80 (CITY DATUM)

**INDEX**

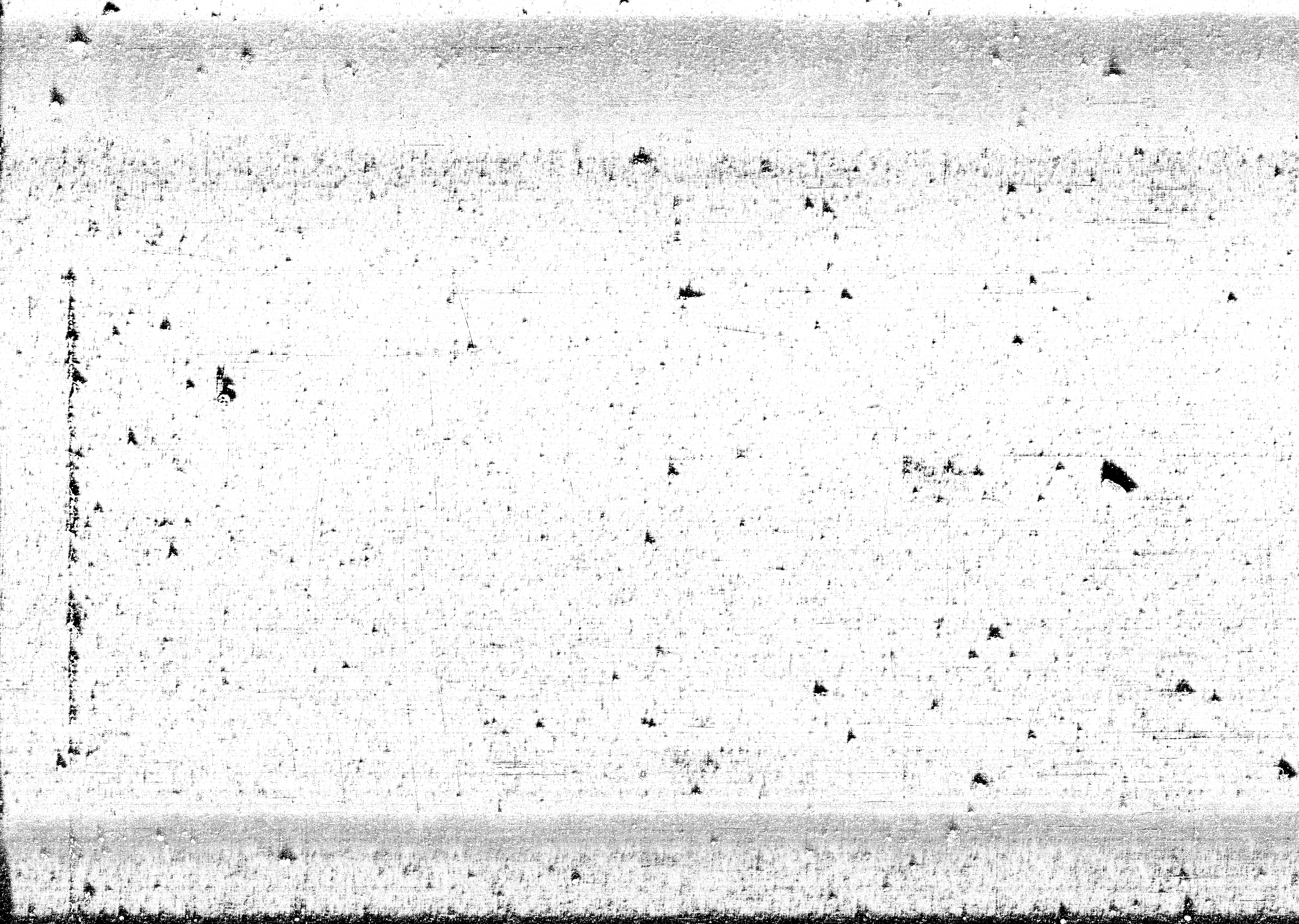
1. TITLE SHEET
2. PLAN/PROFILE
3. TYPE 'P' MANHOLE DETAIL
4. MANHOLE FRAME AND COVER
5. FINAL PLAN



**IMPROVEMENT DISTRICT**



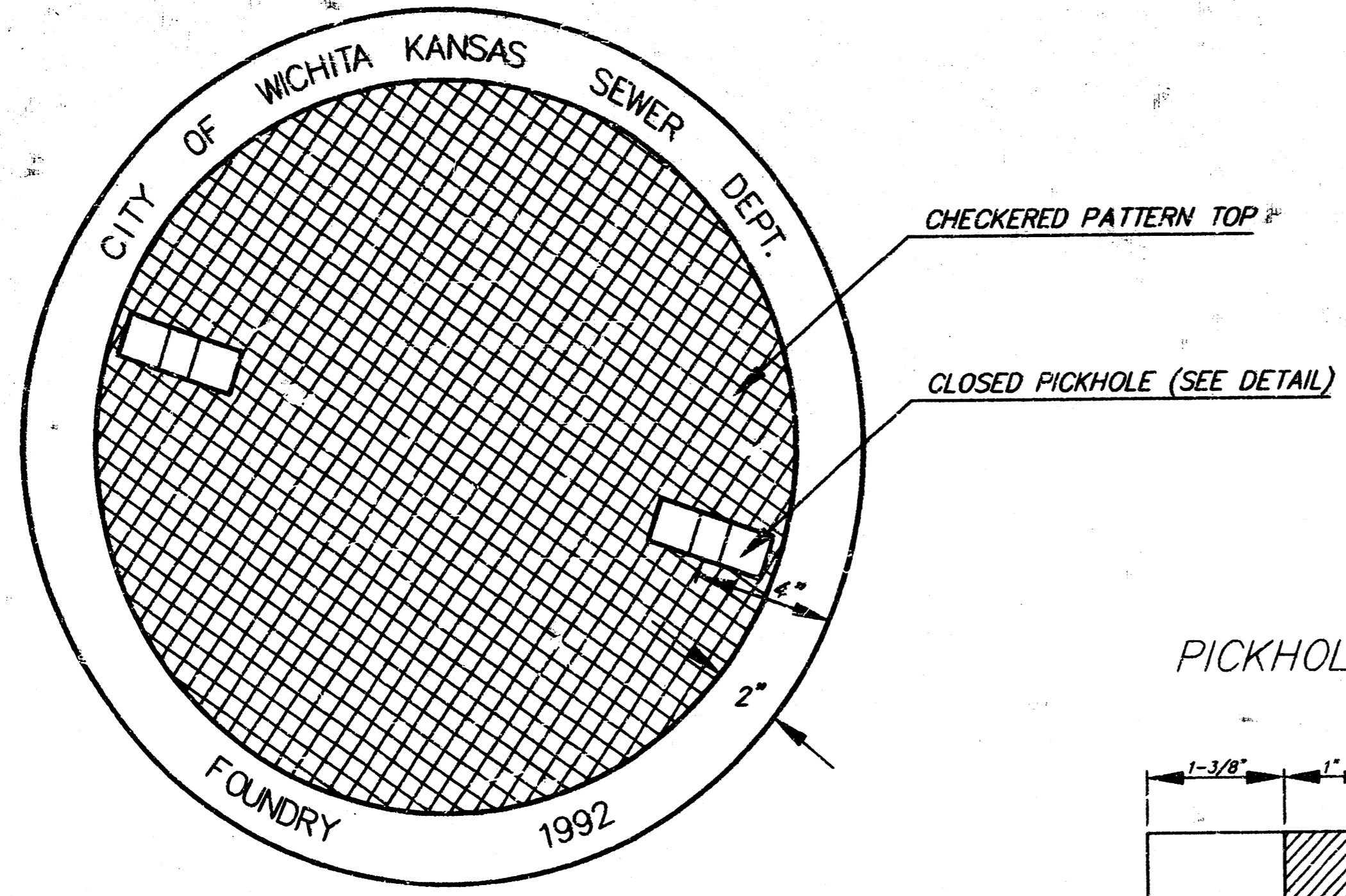
**SRB** 924 NORTH MAIN WICHITA, KANSAS 67203 316-264-8008 FAX 264-4621  
**SAVOY, RUGGLES & BOHM, P. A.**  
ENGINEERING & SURVEYING



MANHOLE COVER  
Weight = 180 Lbs.

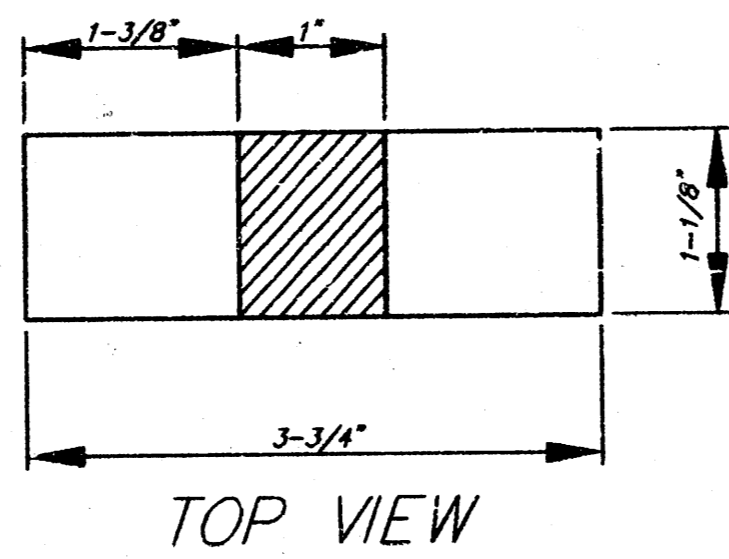
# MANHOLE FRAME AND COVER DETAIL

ADOPTED AS STANDARD DESIGN BY  
CITY OF WICHITA, KANSAS

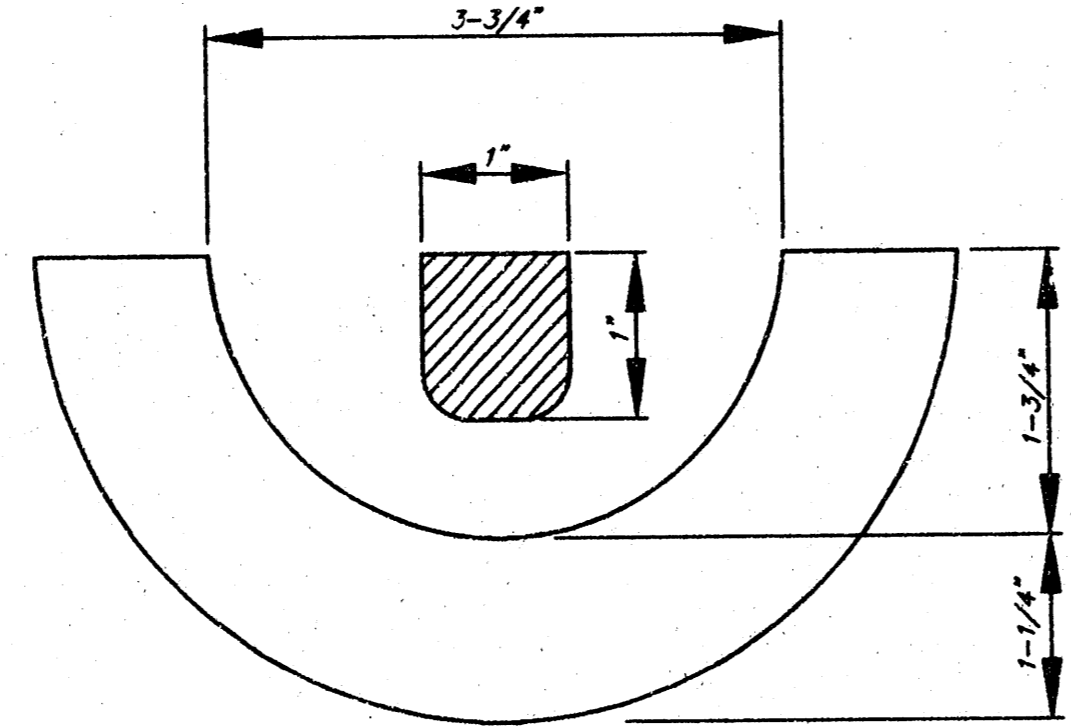


TOP VIEW

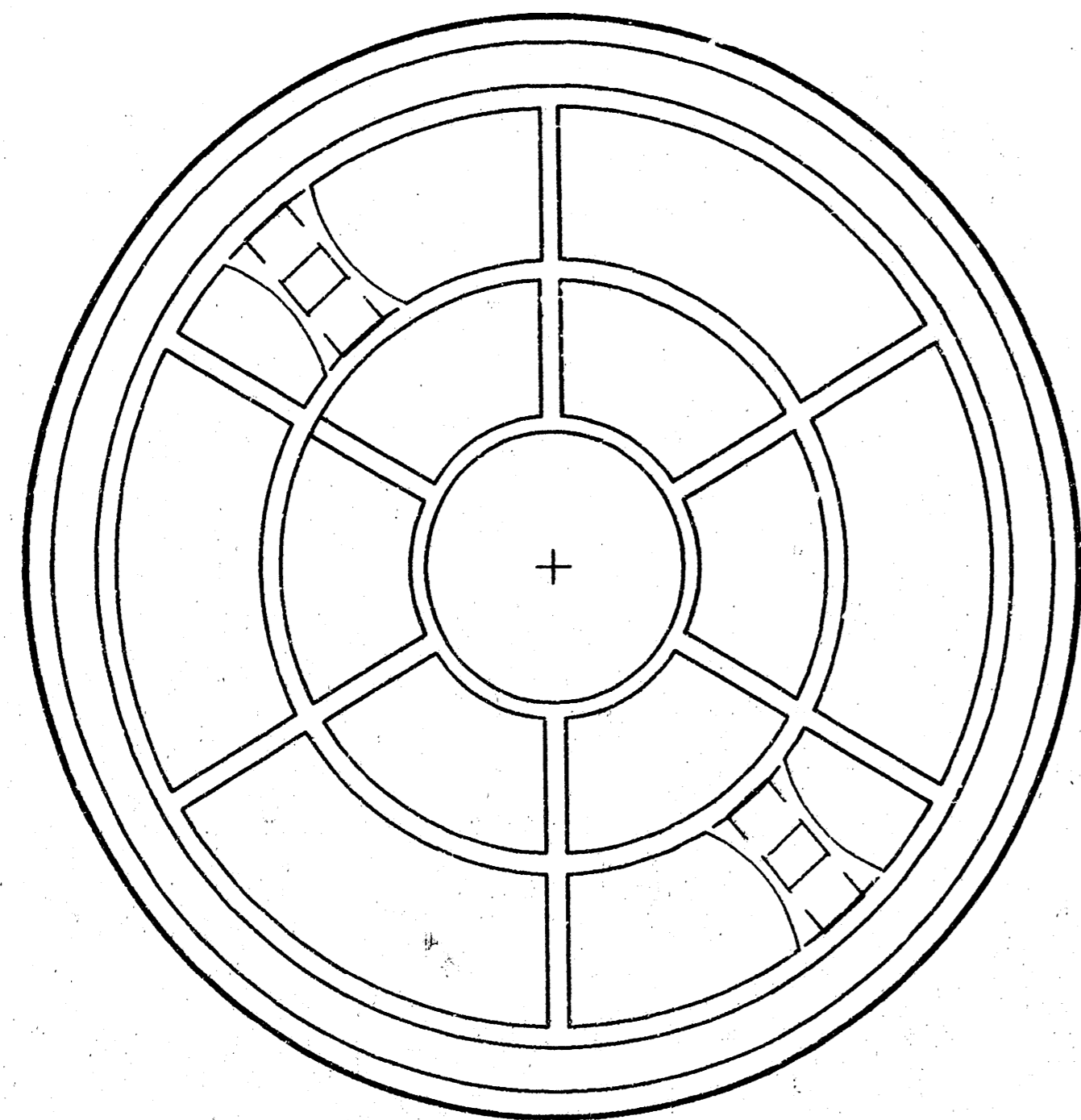
PICKHOLE DETAIL



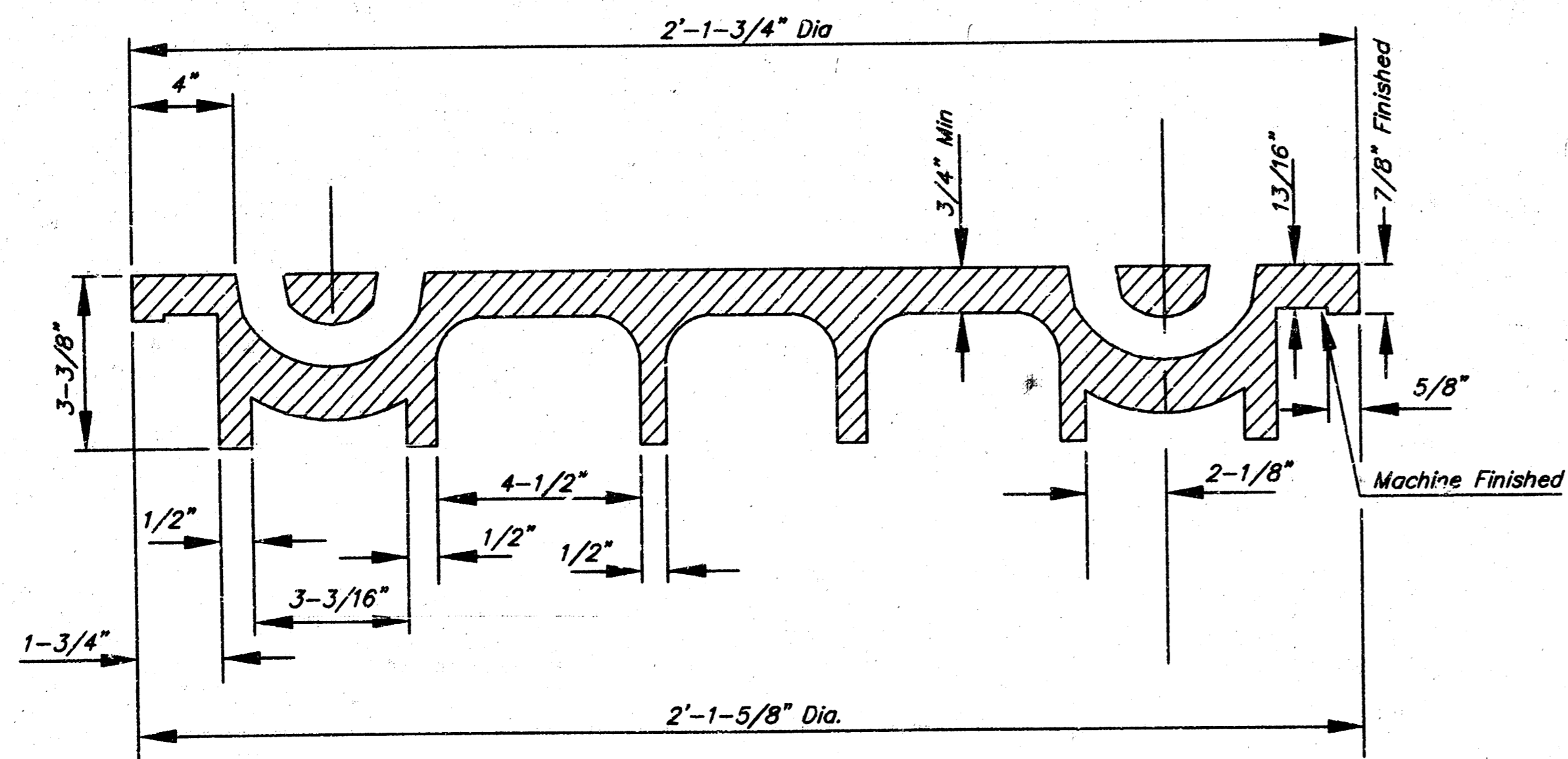
TOP VIEW



SECTION VIEW

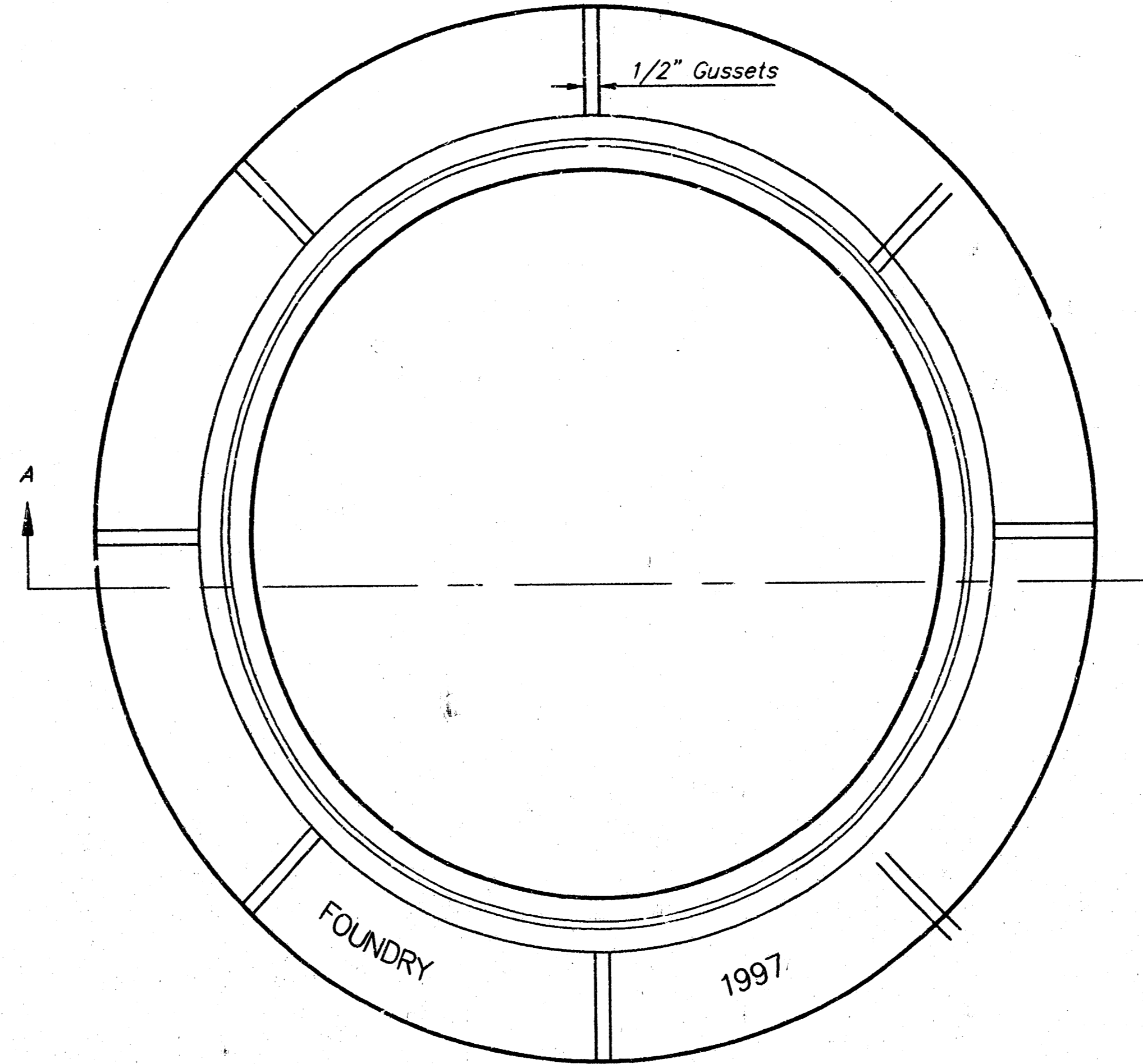


BOTTOM VIEW

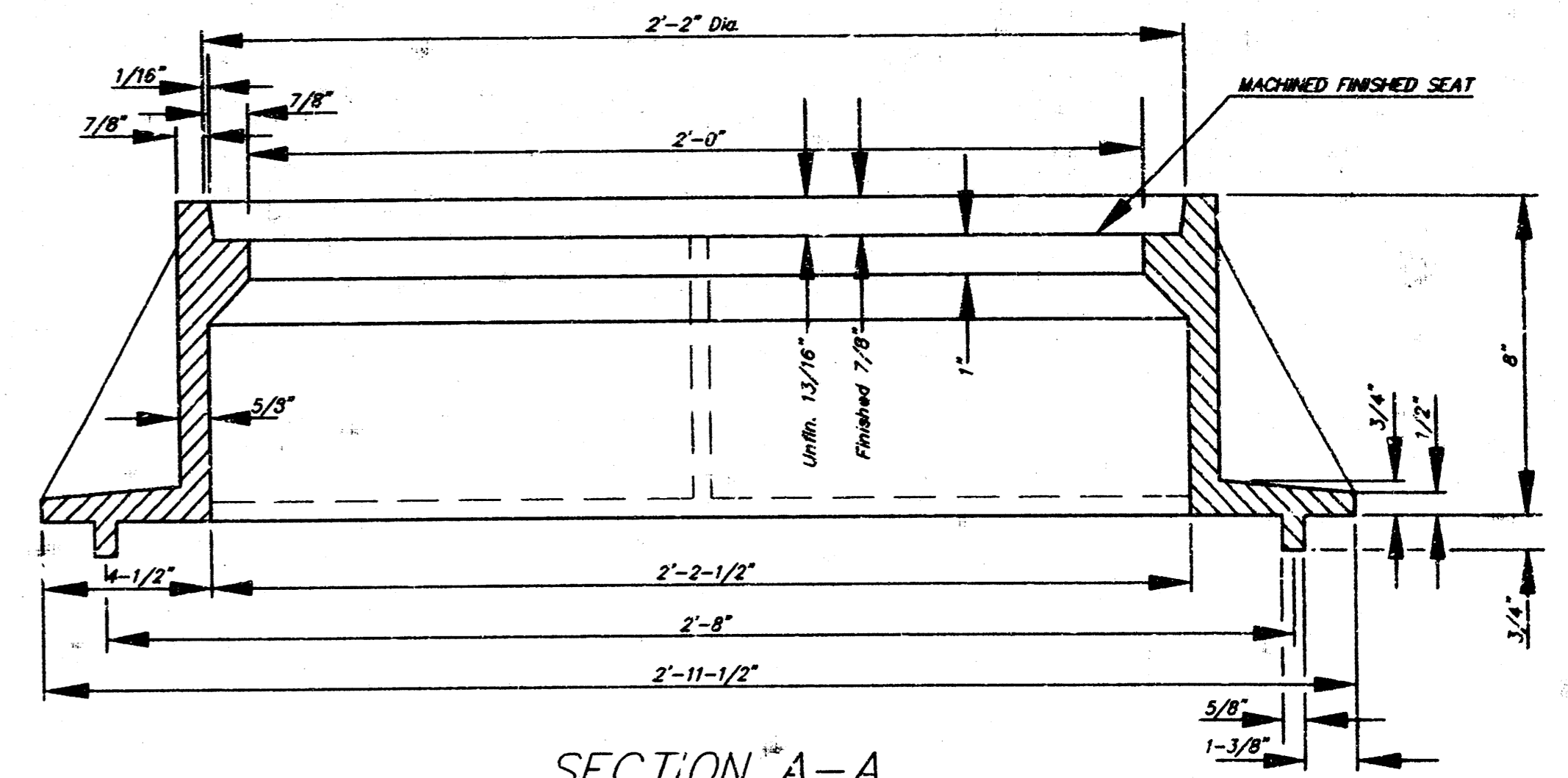


SECTION VIEW

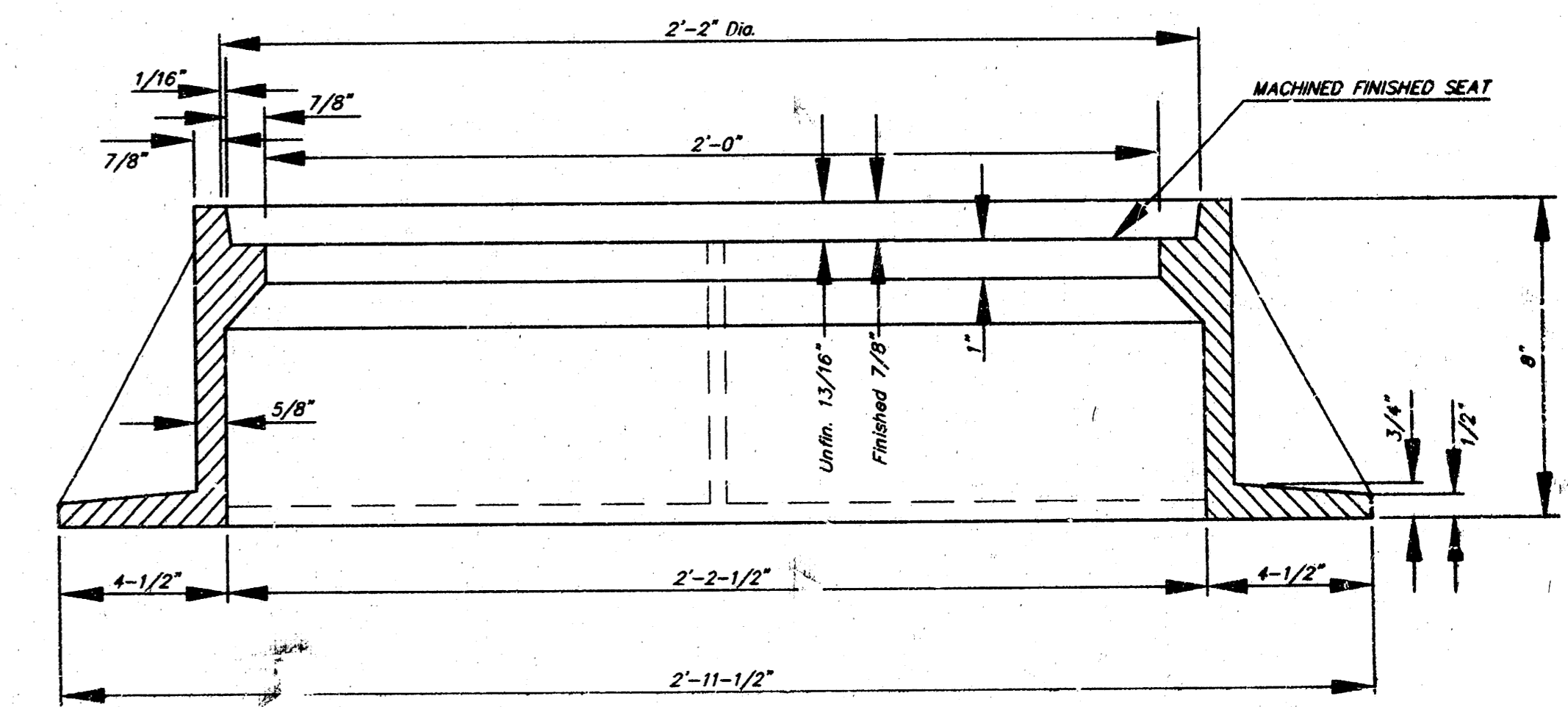
MANHOLE FRAME  
Weight = 240 Lbs.



TOP VIEW



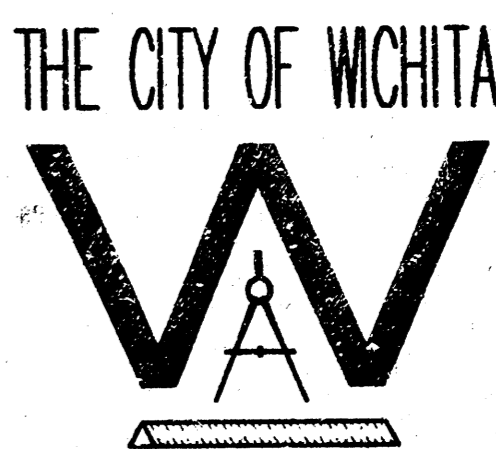
SECTION A-A  
MUD RING



SECTION A-A

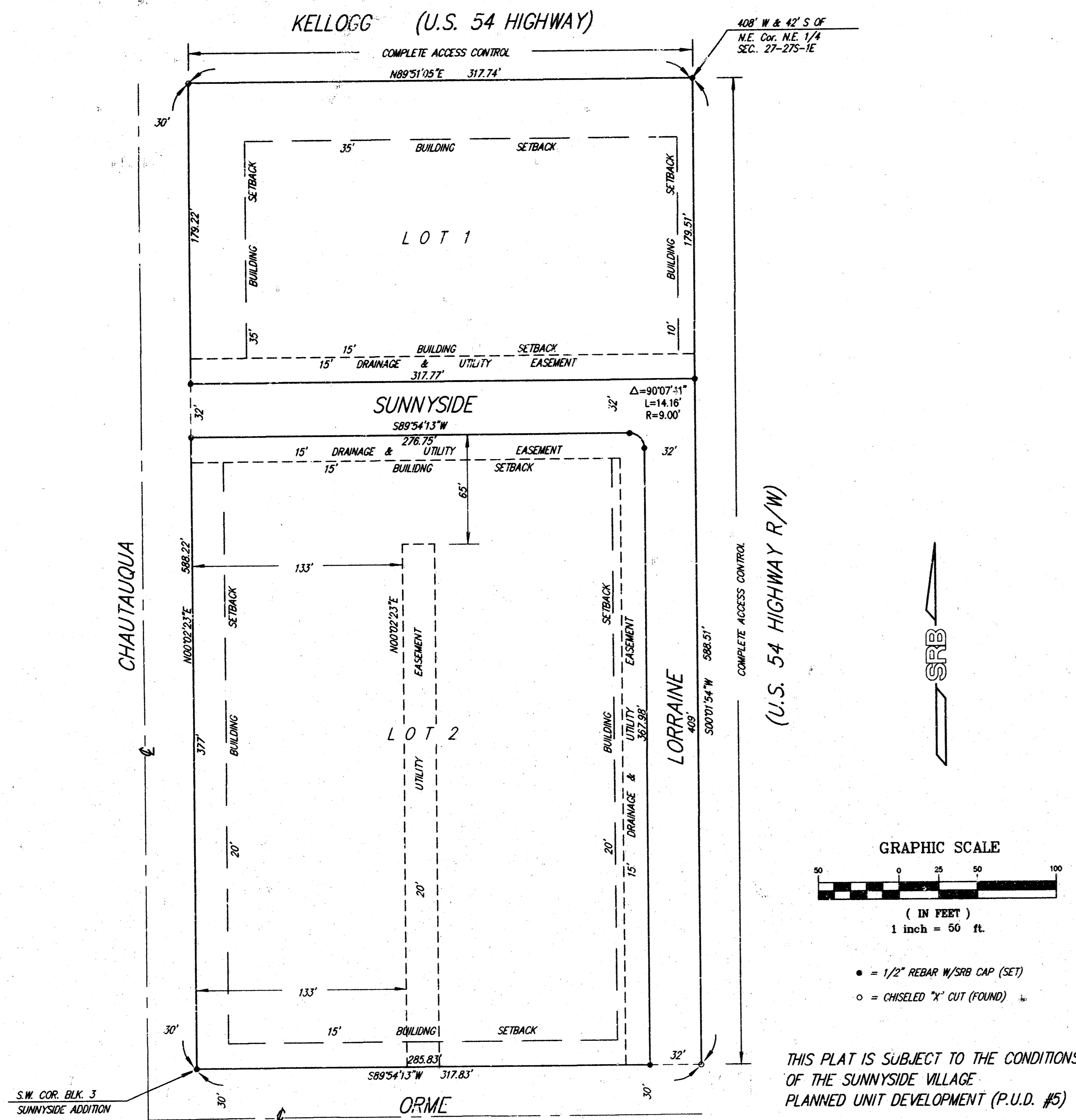
## GENERAL NOTES

1. MANHOLE CASTINGS SHALL BE MANUFACTURED USING GOOD QUALITY GRAY IRON CONFORMING TO CLASS 30 OF A.S.T.M. DESIGNATION A-48. DIMENSIONS AND WEIGHTS SHOWN ON THE DETAILED DRAWINGS SHALL BE CONSIDERED AS MINIMUM REQUIREMENTS AND ANY DEVIATIONS FROM THE DIMENSIONS SHOWN MUST BE SPECIFICALLY APPROVED. THE FINISHED CASTINGS SHALL BE OF UNIFORM QUALITY, FREE FROM BLOWHOLES, POROSITY, HARD SPOTS, SHRINKAGE DISTORTIONS OR OTHER DEFECTS.
2. MANHOLE CASTINGS SHALL WEIGH A MINIMUM OF 180 POUNDS ON THE SOLID COVER AND 240 POUNDS ON THE MANHOLE RING. THIS IS A TOTAL OF 420 POUNDS ON A RING AND COVER SET. CASTINGS WEIGHING LESS THAN THE MINIMUM SPECIFICATIONS WILL NOT BE ACCEPTED.
3. MANHOLE CASTINGS SHALL BE MANUFACTURED SUCH THAT A COVER MANUFACTURED BY ANY ONE FOUNDRY WILL FIT INTERCHANGEABLY INTO A FRAME MANUFACTURED BY ANOTHER FOUNDRY AND STILL MEET ALLOWABLE CLEARANCES AND NON-ROCKING REQUIREMENTS. THIS WILL REQUIRE MANUFACTURING OF THE MATCHING FACES ON THE COVER AND THE FRAME TO CLOSE TOLERANCES.
4. THE OUTSIDE CIRCUMFERENCE OF THE VERTICAL FACE OF THE COVER AND THE INSIDE CIRCUMFERENCE OF THE VERTICAL FACE IN THE FRAME RECESS SHALL BE MANUFACTURED TO TOLERANCES SUCH THAT THE CLEARANCE BETWEEN THE COVER AND FRAME WILL NOT EXCEED 1/8" AT ANY POINT AROUND THE CIRCUMFERENCE OF THE COVER. THE SEATING SURFACES BETWEEN THE COVER AND FRAME SHALL BE MACHINED SUCH THAT THESE SEATING SURFACES SHALL MAKE FULL CONTACT FOR THEIR FULL CIRCUMFERENCE TO PRECLUDE THE COVER FROM ROCKING IN THE FRAME.
5. THE MANHOLE FRAME AND COVER SHALL BE MARKED WITH LETTERING INDICATING THE NAME OF THE MANUFACTURER AND THE YEAR WHEN THE COVER OR FRAME WAS CAST. THE COVER SHALL BE FURTHER IDENTIFIED WITH REGARDS TO OWNERSHIP USING LETTERS AT LEAST 1 INCH IN HEIGHT. THIS IDENTIFICATION SHALL BE "CITY OF WICHITA SEWER DEPARTMENT". THE WORD DEPARTMENT MAY BE ABBREVIATED. THE TEXTURE OF THE TOP SURFACE OF THE COVER SHALL BE MANUFACTURED IN A CHECKERED PATTERN DESIGN AS INDICATED ON THE DRAWINGS. SMOOTH BLOCKOUTS SHALL BE UTILIZED TO HIGHLIGHT THE LETTERING ON THE COVER SURFACE. THE TOTAL AREA OF SMOOTH SURFACE BLOCKOUT SHALL NOT EXCEED THE AREA AS INDICATED ON THE DRAWING. POSITIONING OF SMOOTH BLOCKOUTS AND LETTERING MAY VARY FROM THAT SHOWN ON THE DETAILED DRAWING.

 <p>THE CITY OF WICHITA</p> <p>CITY ENGINEER'S OFFICE CITY HALL - SEVENTH FLOOR 455 NORTH MAIN STREET WICHITA, KANSAS 67202 (316) 268-4500 (316) 268-4114 FAX</p>	<b>MANHOLE FRAME AND COVER</b>	
	M. E. LINDEBAK P.E. - CITY ENGINEER	
	PROJECT NUMBER 468-82850	INDEX CODE 743792
	DATE MAR 96	SHEET 4 OF 5

# SUNNYSIDE VILLAGE

WICHITA, SEDGWICK COUNTY, KANSAS



State of Kansas) SS  
Sedgwick County)

We, Savoy, Ruggles & Bohm, P.A., Surveyors in aforesaid county and state do hereby certify that, under the supervision of the undersigned, we have surveyed and platted "SUNNYSIDE VILLAGE", Wichita, Sedgwick County, Kansas and that the accompanying plat is a true and correct exhibit of the property surveyed, described as follows:

Lots 1 through 48 except the North 12 Feet of Lot 1 and Lot 2, Block 2, Sunnyside Addition to Wichita, Sedgwick County, Kansas  
All being situated in the N.E. 1/4 of Sec. 27, TWP 27S-R-1-E

All Public easements and dedications being vacated by virtue of K.S.A. 12-512(b).

Savoy, Ruggles & Bohm, P.A.

Date \_\_\_\_\_

Mark A. Savoy RLS #788  
Surveyor

Know all men by these presents that we, the undersigned have caused the land described in the surveyor's certificate to be platted into Lots and Streets to be known as "SUNNYSIDE VILLAGE", Wichita, Sedgwick County, Kansas. The utility easement is hereby granted as indicated for the construction and maintenance of all public utilities. The drainage and utility easements are hereby granted as indicated for drainage purposes and for the construction and maintenance of all public utilities. The Streets are hereby dedicated to and for the use of the public. Access control is hereby granted to the appropriate governing body as indicated on the face of the plat.

Sunnyside Village LLC.

Willard Ebersole  
President

State of Kansas) SS  
Sedgwick County)

The foregoing instrument acknowledged before me, this \_\_\_\_\_ day of \_\_\_\_\_ 1999, by Willard Ebersole, President of Sunnyside Village LLC on behalf of the LLC.

\_\_\_\_\_  
Notary Public

My App't. Exp. \_\_\_\_\_

This plat of "SUNNYSIDE VILLAGE", Wichita, Sedgwick County, Kansas, has been submitted to and approved by the Wichita-Sedgwick County Metropolitan Area Planning Commission, Wichita, Kansas.

Dated this \_\_\_\_\_ day of \_\_\_\_\_, 1998.

Wichita-Sedgwick County Metropolitan Area Planning Commission

Richard E. Lopez  
Chairman

Marvin S. Krout  
Secretary

This plat approved and all dedications shown hereon, accepted by the City Council of the City of Wichita, Kansas, this \_\_\_\_\_ day of \_\_\_\_\_, 1999.

Bob Knight  
Mayor

Pat Burnett  
City Clerk

Entered on transfer record this \_\_\_\_\_ day of \_\_\_\_\_, 1999.

James Alford  
County Clerk

State of Kansas) SS  
Sedgwick County)

This is to certify that this plat has been filed for record in the office of the Register of Deeds, this \_\_\_\_\_ day of \_\_\_\_\_, 1999, at \_\_\_\_\_ o'clock \_\_\_\_\_ M. and is duly recorded.

Bill Meek  
Register of Deeds

Linda Kizzire  
Deputy

<b>SUNNYSIDE VILLAGE ADDITION-PLAT LATERAL 10, DISTRICT 1, SS NO. 12 WICHITA, KANSAS</b>			
<b>SRB</b>		924 NORTH MAIN WICHITA, KANSAS 67203 http://www.telat.com/~srb	
		316-264-8008 FAX 264-4621 E-mail: srb@telat.com	
<b>SAVOY, RUGGLES &amp; BOHM, P.A. ENGINEERING &amp; SURVEYING</b>			
PROJECT NUMBER <b>468-82850 (743792)</b>			
DESIGN	DRAWN	UTILITY	REVIEW
CMB	MWS		05/21/99
			REVISED
			18-15-01-15