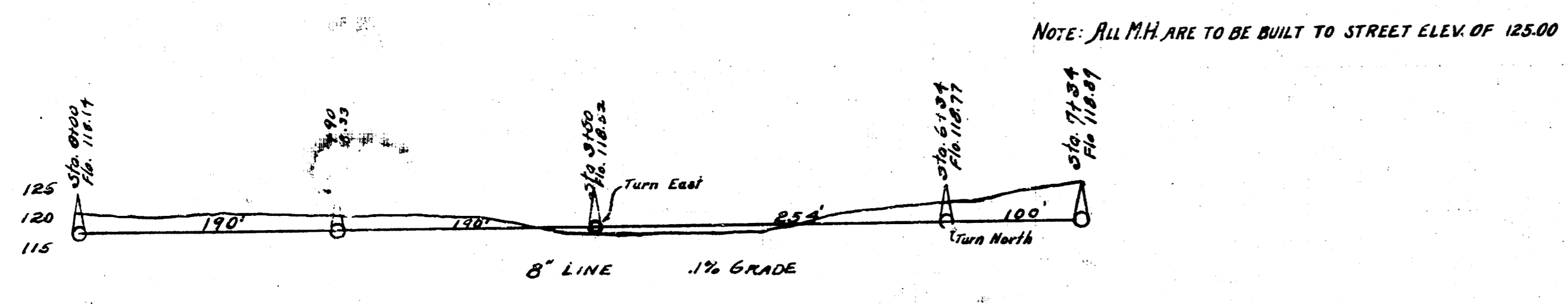
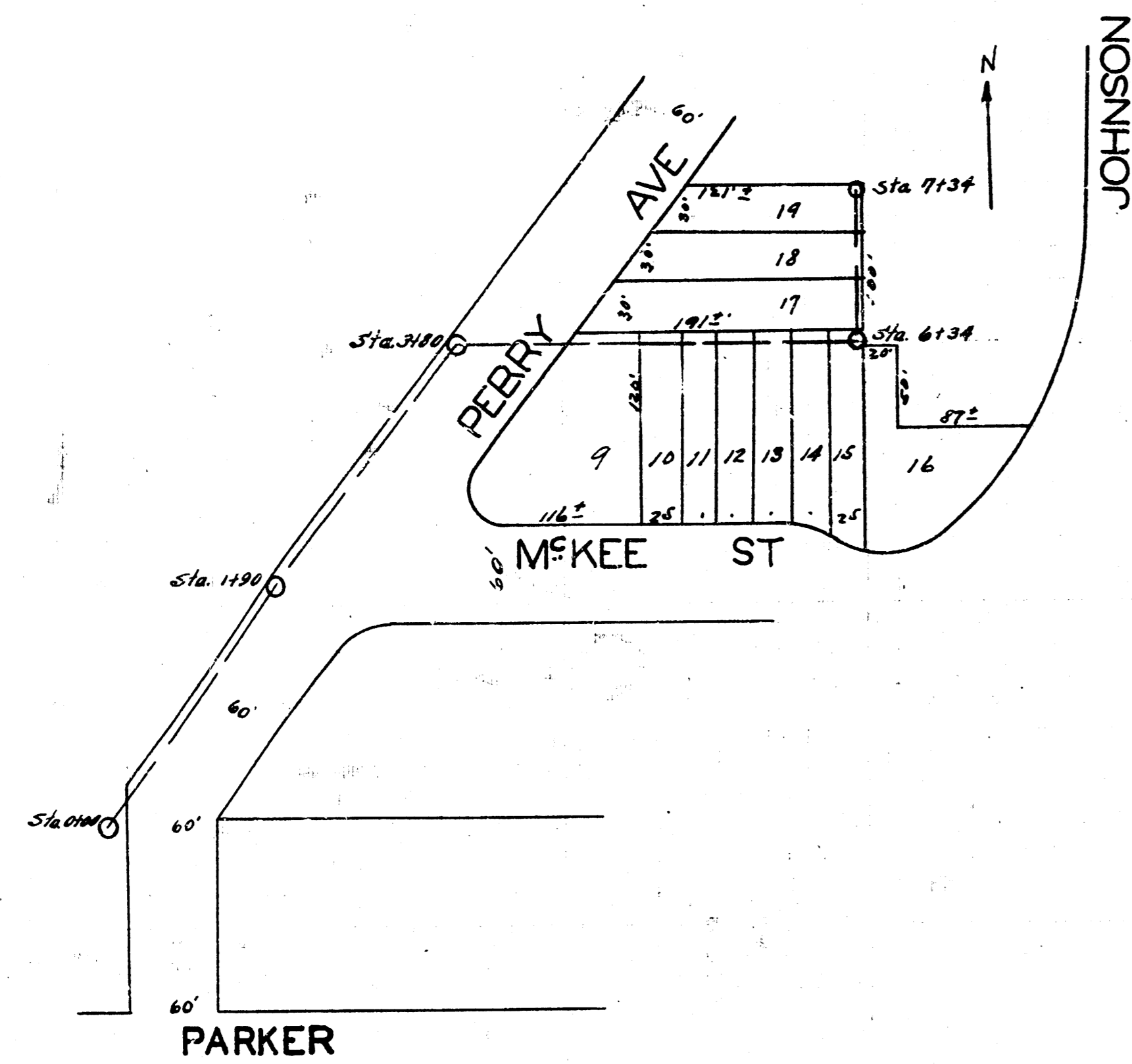


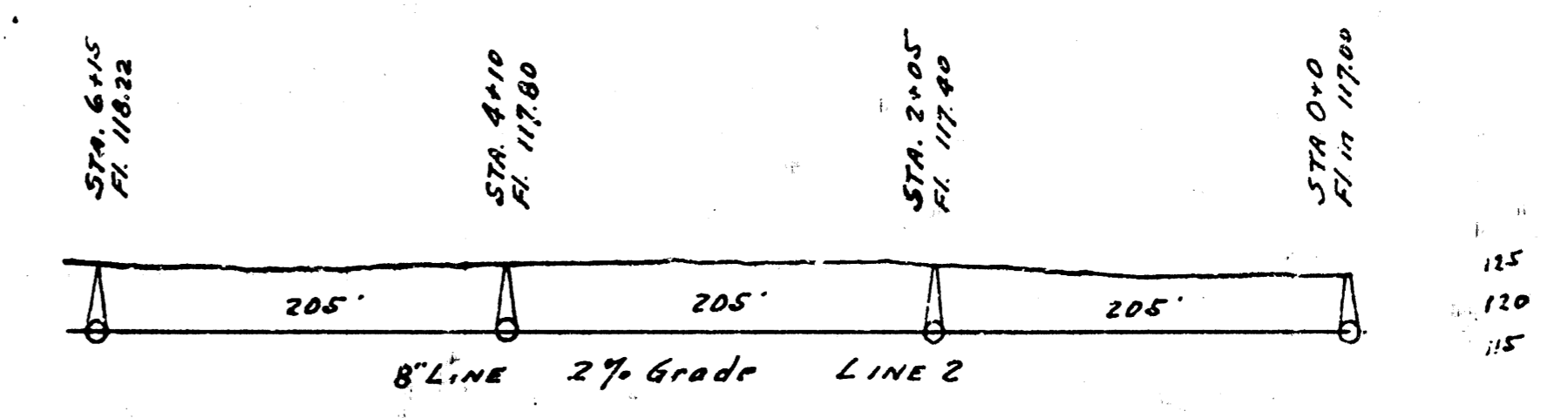
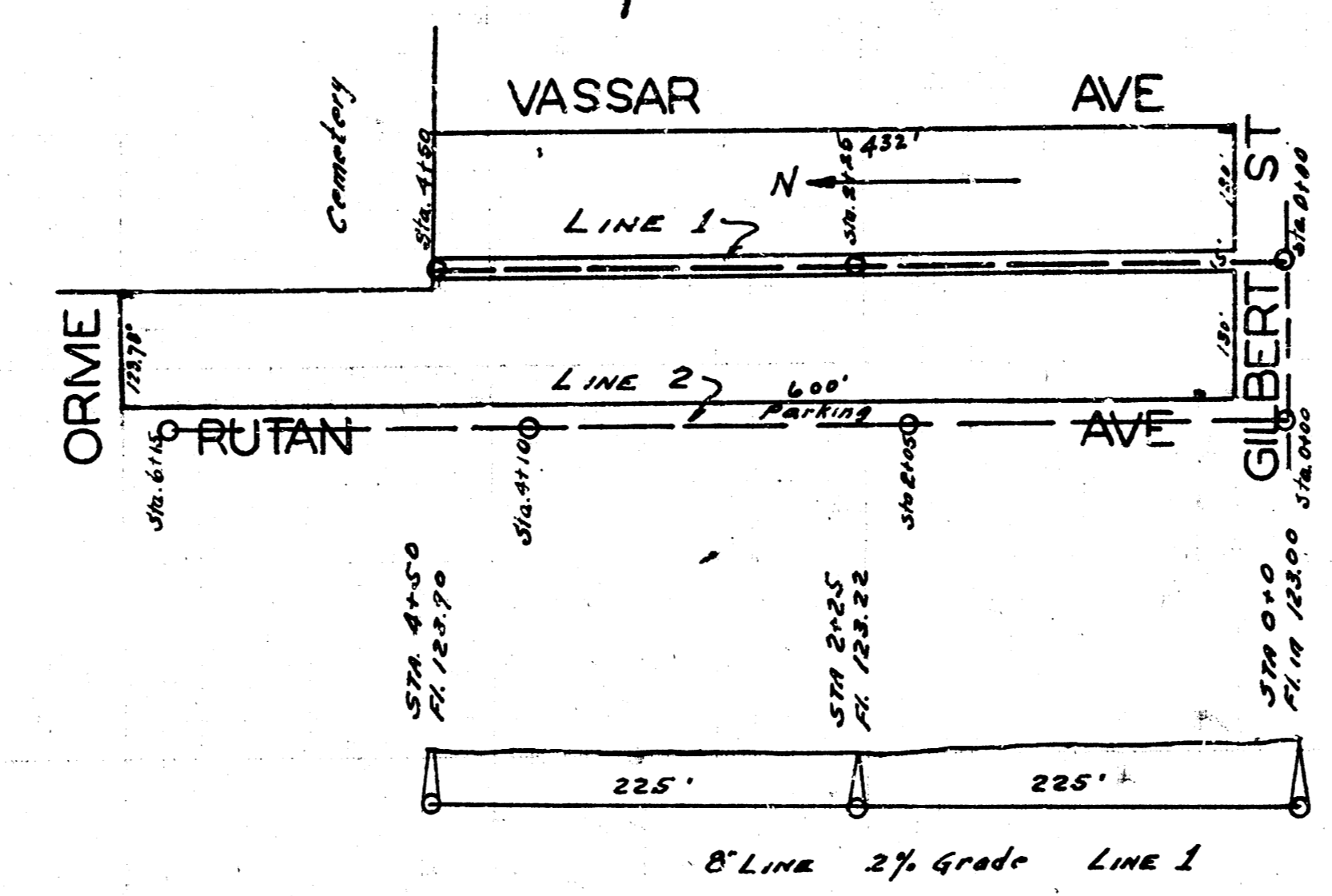
LAT. M, DIST. R, S.S. 20.
SHEET 2



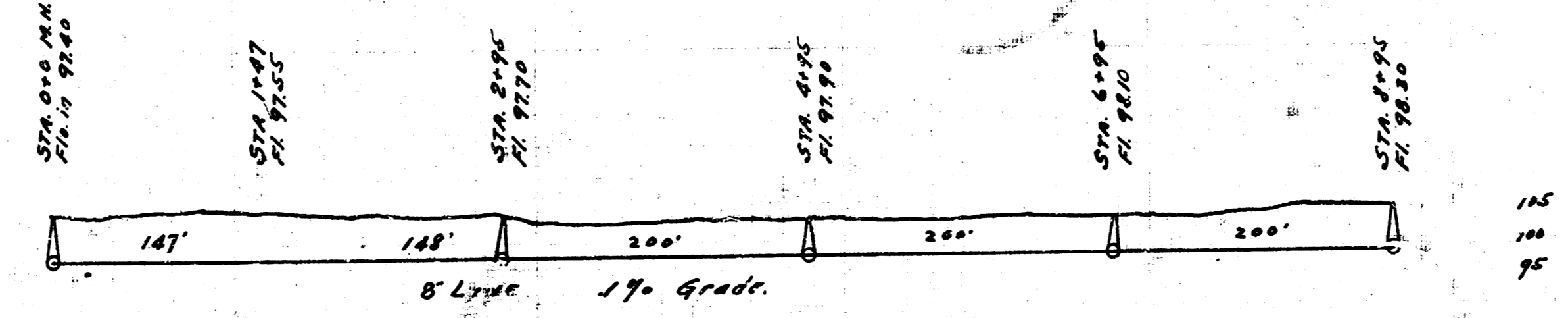
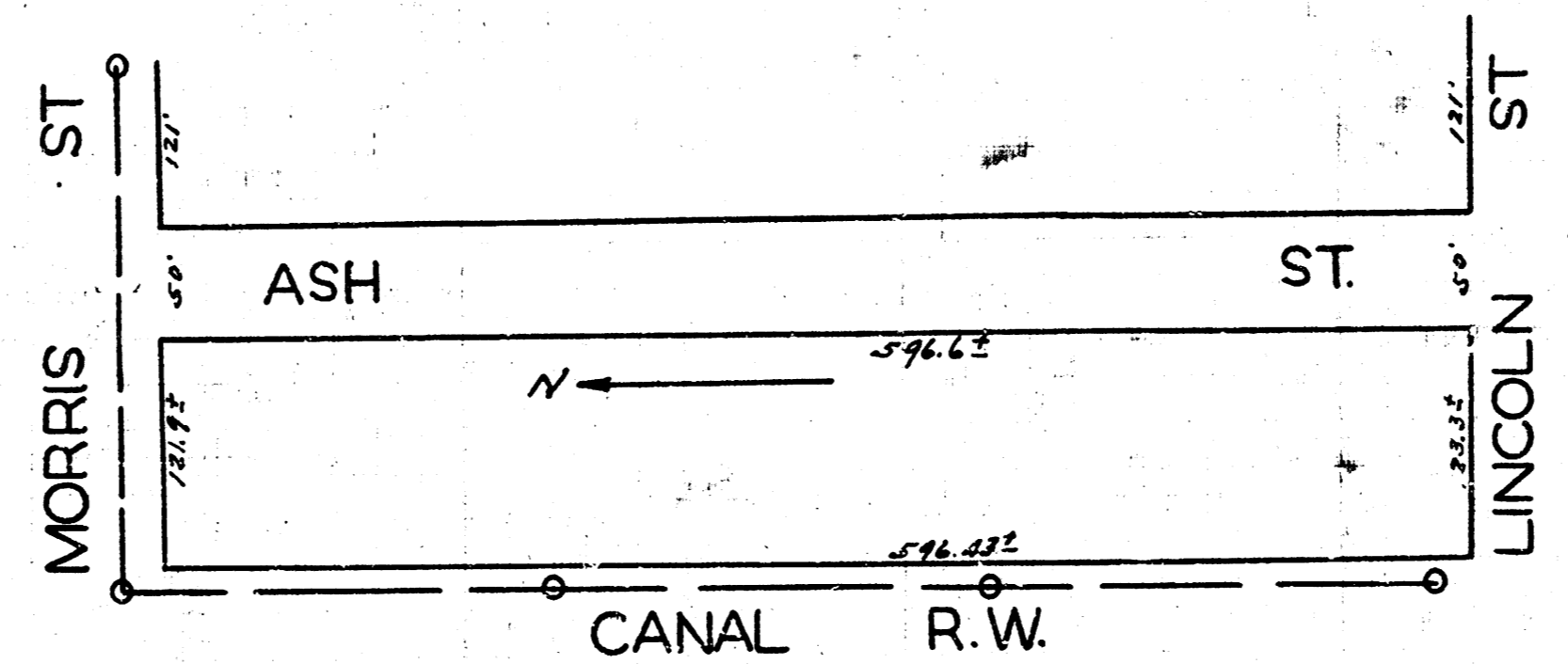
B.M. Elev. 120.22 - Top of iron N.S. of Garland and E. of 14th
121.68 - N. side of run. 1' P.M. on W.S. of Tracy & 114' N. of Parker

NOTE: All M.H. ARE TO BE BUILT TO STREET ELEV. OF 125.00

LAT. G, DIST. 6, S.S. 12.



B.M. Elev. 122.18 P in Pollock F.A. W. W. N.W. of Rutan + Orme



B.M. Elev. 103.47 + on c& N. of C.S. N. of Bldg on W.S. Madison.

LAT. A, DIST. 5, S.S. 12.