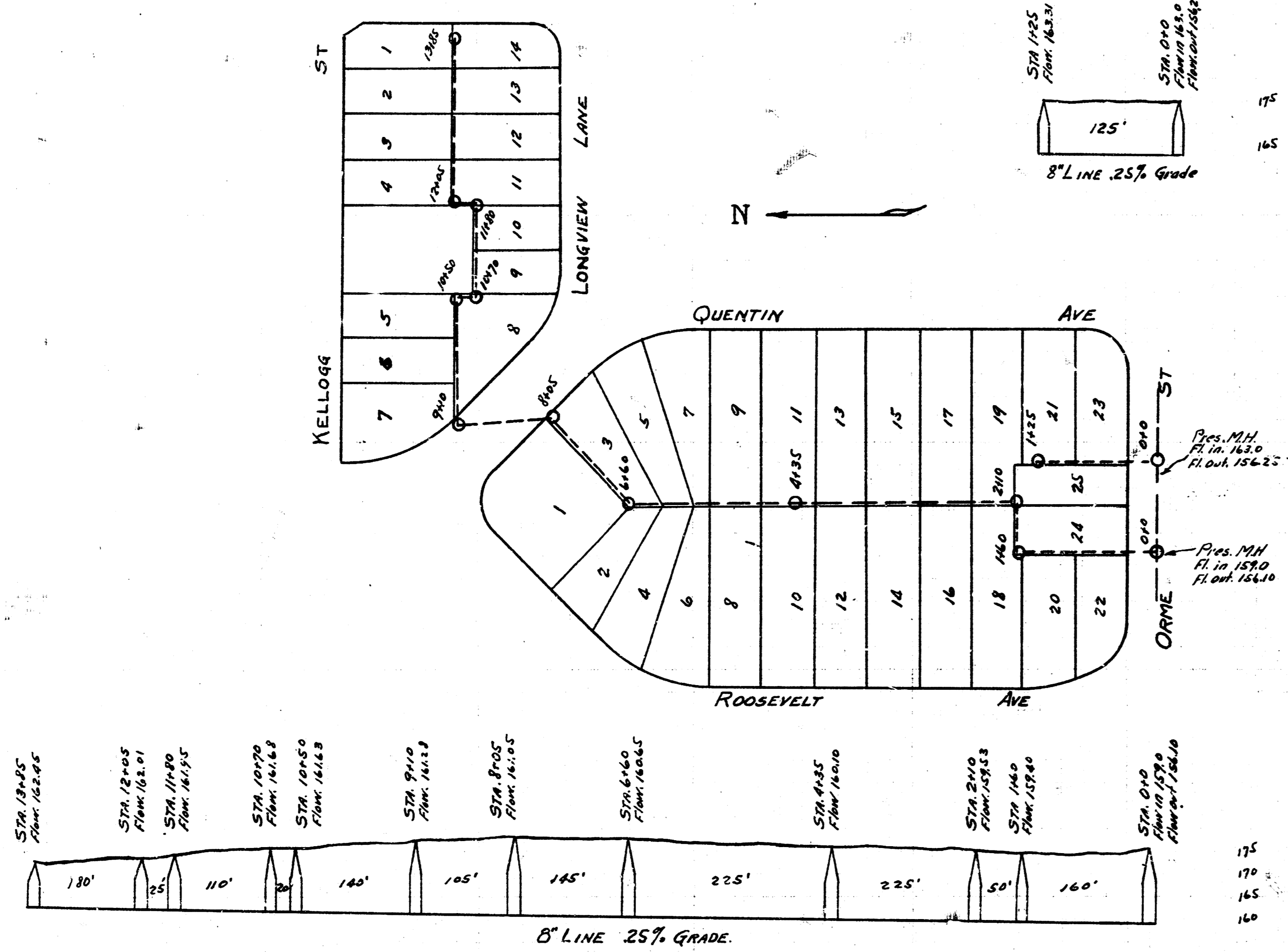


LAT. E, DIST. 6, S.S. 12.



BM. 175.41 Top of Radius 1199 N.E. Corner, 1423 Ave. E.  
 BM. 154.52 Top of Radius from N.E. Cor. 1415, 1610 Ave.  
 BM. 162.11 Top of 1100, 5th cor. 1414, 1610 Ave.

