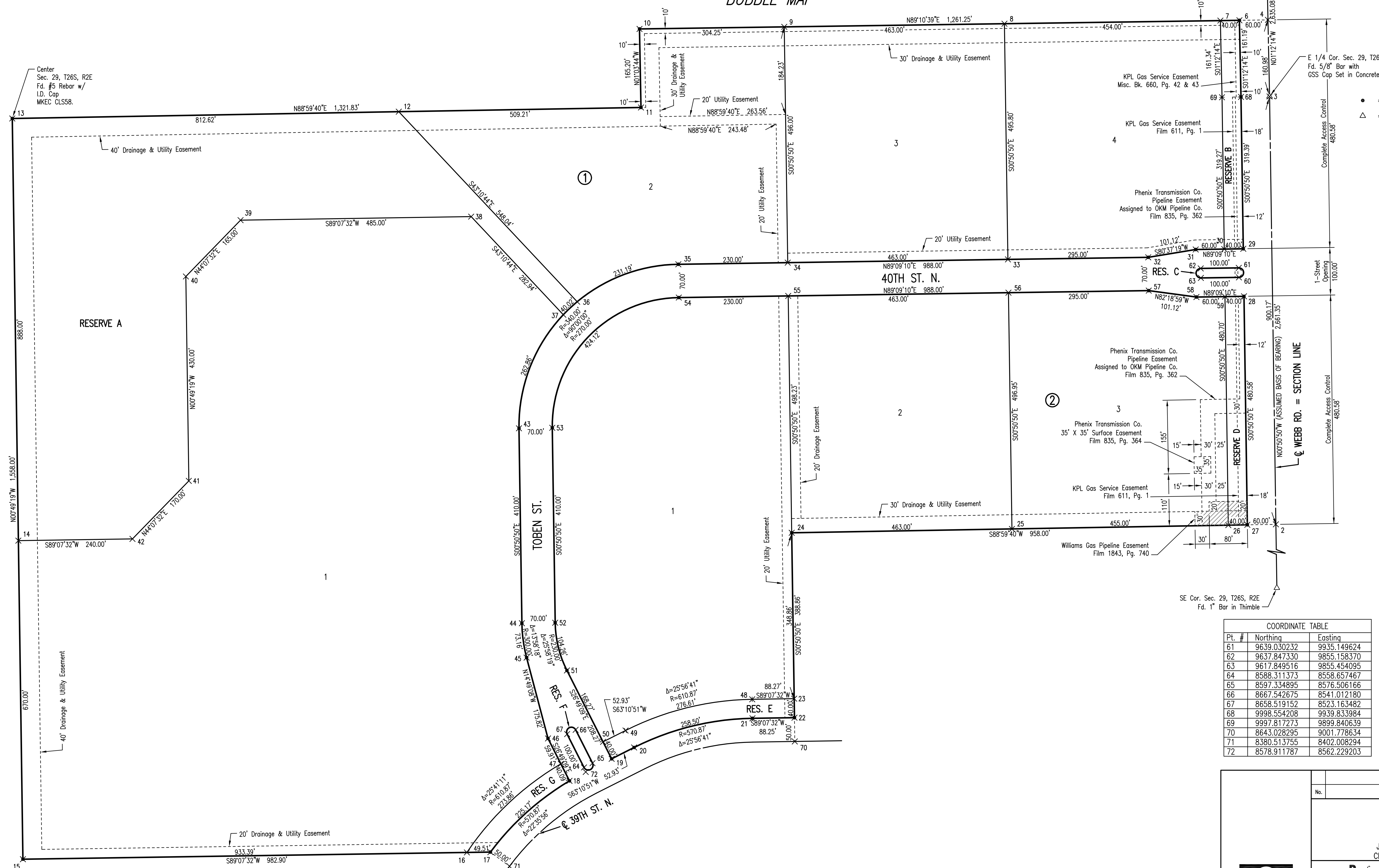


# WEBB BUSINESS PARK

## AN ADDITION TO WICHITA, SEDGWICK COUNTY, KANSAS

### BUBBLE MAP



NE Cor. Sec. 29, T26S, R2E  
Fd. 5/8" Bar with  
GSS Cap Set in Concrete.

E 1/4 Cor. Sec. 29, T26S, R2E  
Fd. 5/8" Bar with  
GSS Cap Set in Concrete.

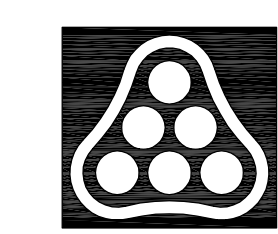
SCALE: 1" = 100'

● = 1/2" REBAR W/PEC CAP UNLESS OTHERWISE NOTED  
△ = SECTION CORNER

COORDINATE TABLE		
Pt. #	Northing	Easting
1	7338.548122	10039.176565
2	9099.705566	10013.132754
3	9999.607175	9999.825103
4	10160.552631	9996.442662
5	12634.105443	9944.458301
6	10159.691369	9936.447514
7	10159.117195	9896.450748
8	10152.600523	9442.501973
9	10145.954656	8979.553517
10	10141.587400	8675.332200
11	9976.413360	8678.395066
12	9967.477035	8169.262452
13	9953.216095	7356.768566
14	9065.304985	7369.507091
15	8395.373644	7379.118342
16	8409.618448	8312.400884
17	8410.374018	8361.903872
18	8560.152964	8528.071933
19	8606.457589	8616.715324
20	8630.336840	8663.948937
21	8691.676021	8912.799598
22	8693.022835	9001.039320
23	8733.018466	9000.447869
24	9081.840323	8995.289528
25	9089.965637	9458.216106
26	9097.950624	9913.147772
27	9098.652601	9953.141765
28	9579.184654	9946.035707
29	9679.173722	9944.557079
30	9678.582271	9904.561452
31	9677.695094	9844.568012
32	9661.218106	9744.800738
33	9656.856154	9449.832988
34	9650.010165	8986.887492
35	9646.609320	8756.912636
36	9567.837645	8544.272378
37	9540.466484	8515.103566
38	9746.793515	8321.492310
39	9739.391764	7836.548793
40	9620.952152	7721.670343
41	9190.996398	7727.838755
42	9068.967707	7609.479140
43	9301.619156	8421.977140
44	8891.663978	8428.039515
45	8819.370031	8437.985110
46	8649.396458	8482.954323
47	8595.928251	8509.985511
48	8731.671363	8912.189144
49	8666.034237	8645.901893
50	9639.030232	9935.149624
51	9637.847330	9855.158370
52	9617.849516	9855.454095
53	8588.311373	8558.657467
54	8597.334895	8576.506166
55	8667.542675	8541.012180
56	8658.519152	8523.163482
57	9998.554208	9939.833984
58	9997.817273	9899.840639
59	8643.028295	9001.778634
60	8380.513755	8402.008294
61	9639.030232	9935.149624
62	9637.847330	9855.158370
63	9617.849516	9855.454095
64	8588.311373	8558.657467
65	8597.334895	8576.506166
66	8667.542675	8541.012180
67	8658.519152	8523.163482
68	9998.554208	9939.833984
69	9997.817273	9899.840639
70	8643.028295	9001.778634
71	8380.513755	8402.008294
72	8578.911787	8562.229203

COORDINATE TABLE		
Pt. #	Northing	Easting
1	7338.548122	10039.176565
2	9099.705566	10013.132754
3	9999.607175	9999.825103
4	10160.552631	9996.442662
5	12634.105443	9944.458301
6	10159.691369	9936.447514
7	10159.117195	9896.450748
8	10152.600523	9442.501973
9	10145.954656	8979.553517
10	10141.587400	8675.332200
11	9976.413360	8678.395066
12	9967.477035	8169.262452
13	9953.216095	7356.768566
14	9065.304985	7369.507091
15	8395.373644	7379.118342
16	8409.618448	8312.400884
17	8410.374018	8361.903872
18	8560.152964	8528.071933
19	8606.457589	8616.715324
20	8630.336840	8663.948937
21	8691.676021	8912.799598
22	8693.022835	9001.039320
23	8733.018466	9000.447869
24	9081.840323	8995.289528
25	9089.965637	9458.216106
26	9097.950624	9913.147772
27	9098.652601	9953.141765
28	9579.184654	9946.035707
29	9679.173722	9944.557079
30	9678.582271	9904.561452
31	9677.695094	9844.568012
32	9661.218106	9744.800738
33	9656.856154	9449.832988
34	9650.010165	8986.887492
35	9646.609320	8756.912636
36	9567.837645	8544.272378
37	9540.466484	8515.103566
38	9746.793515	8321.492310
39	9739.391764	7836.548793
40	9620.952152	7721.670343
41	9190.996398	7727.838755
42	9068.967707	7609.479140
43	9301.619156	8421.977140
44	8891.663978	8428.039515
45	8819.370031	8437.985110
46	8649.396458	8482.954323
47	8595.928251	8509.985511
48	8731.671363	8912.189144
49	8666.034237	8645.901893
50	9639.030232	9935.149624
51	9637.847330	9855.158370
52	9617.849516	9855.454095
53	8588.311373	8558.657467
54	8597.334895	8576.506166
55	8667.542675	8541.012180
56	8658.519152	8523.163482
57	9998.554208	9939.833984
58	9997.817273	9899.840639
59	8643.028295	9001.778634
60	8380.513755	8402.008294
61	9639.030232	9935.149624
62	9637.847330	9855.158370
63	9617.849516	9855.454095
64	8588.311373	8558.657467
65	8597.334895	8576.506166
66	8667.542675	8541.012180
67	8658.519152	8523.163482
68	9998.554208	9939.833984
69	9997.817273	9899.840639
70	8643.028295	9001.778634
71	8380.513755	8402.008294
72	8578.911787	8562.229203

Scaled 03-19-2008 10:52:38 AM by BJS  
 Plot Scale 1:100  
 03-19-2008 3:19:48 PM  
 G:\2007\07593\003\07593-003-C-FINAL.PLAT



No.	Revision	By	Date
WEBB BUSINESS PARK STORM WATER DRAIN NO. 337 <b>PLAT</b> JAMES L. ARMOUR, P.E. - CITY ENGINEER CITY OF WICHITA PROJECT NO. 468-84431 <b>Professional Engineering Consultants, P.A.</b> 303 S. TOPKA • WICHITA, KANSAS 67202 316-262-2691 • FAX 316-262-3003			
Designed by	BMM	Job No.	35-07593-003
Drawn by	BJS, TAT	Date	June 2007
			Sheet 3 of 29