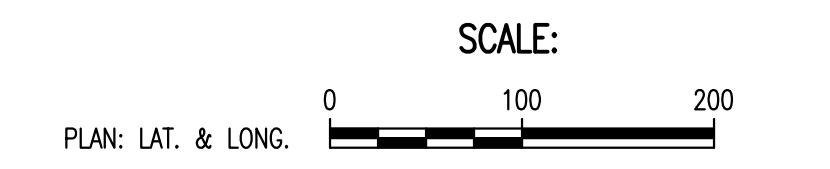
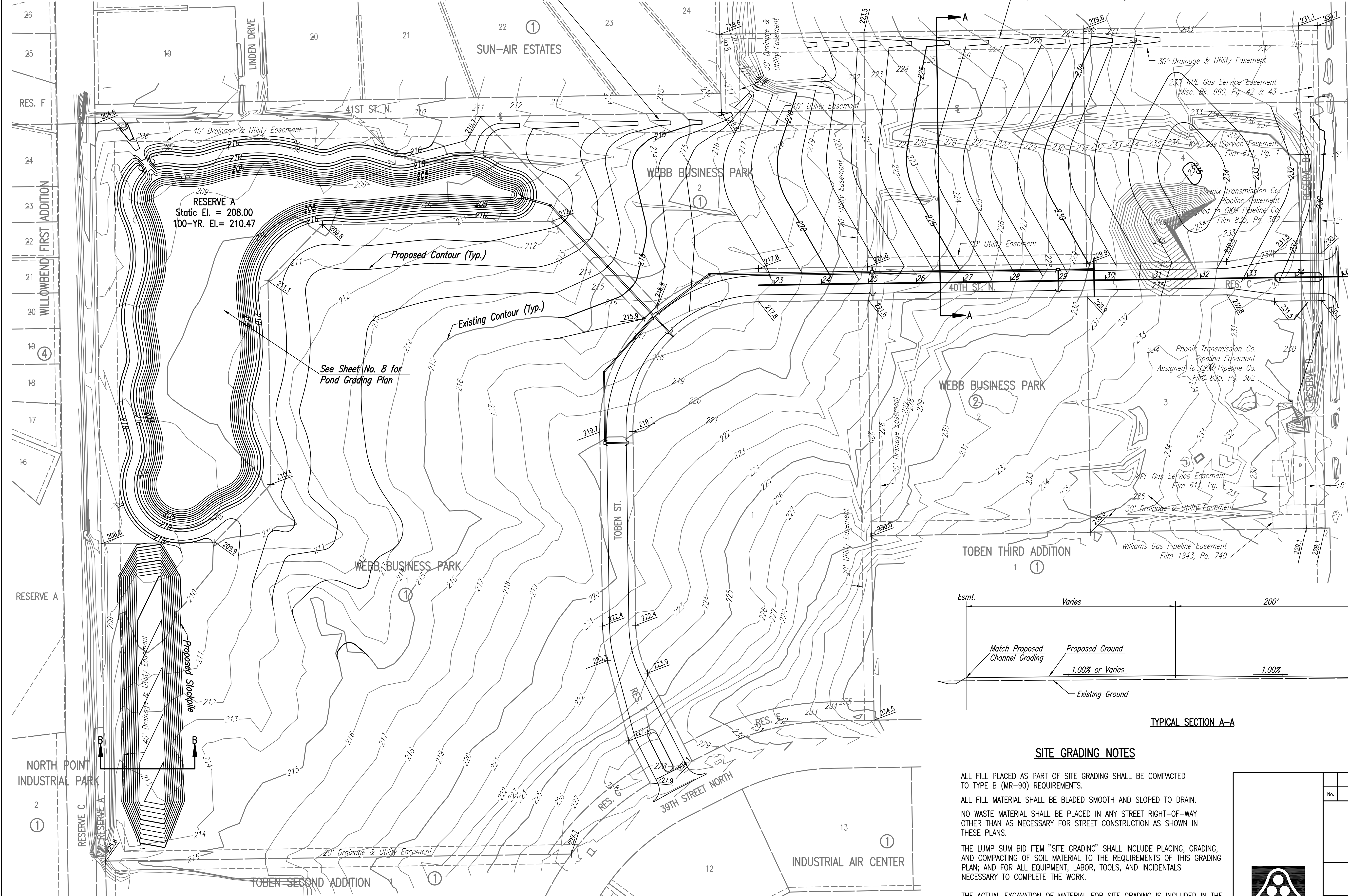


WEBB BUSINESS PARK

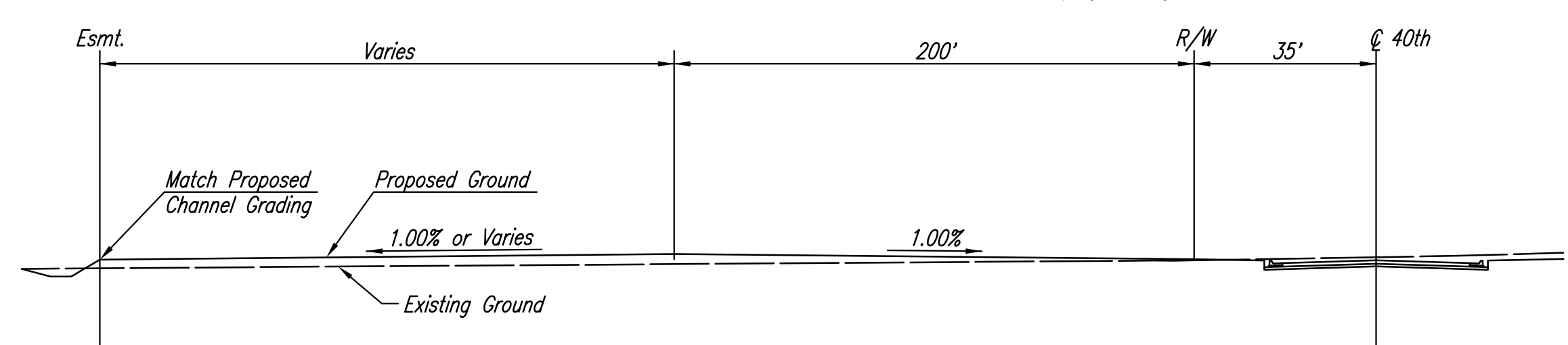
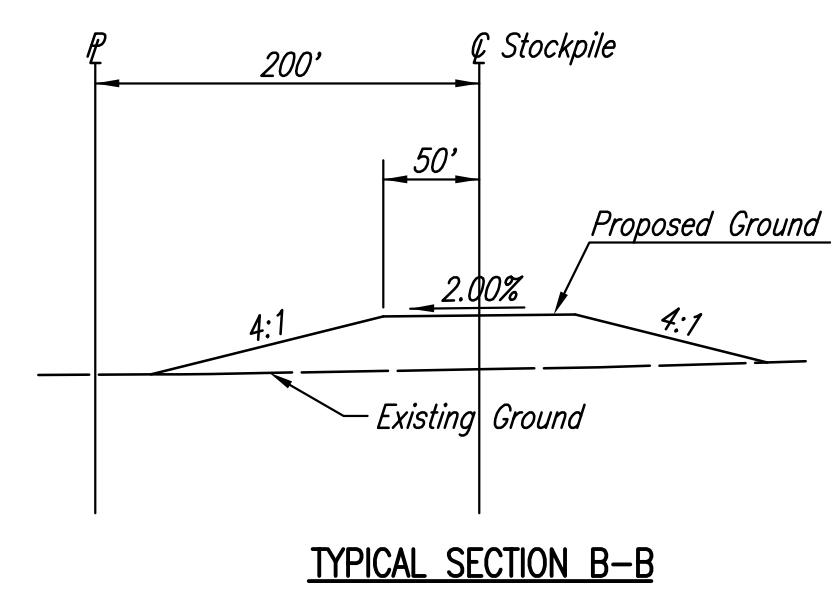
AN ADDITION TO WICHITA, SEDGWICK COUNTY, KANSAS

See Sheet No. 12 for
Prop. Channel No. 2 Grading

See Sheet No. 11 for
Prop. Channel No. 1 Grading



- LEGEND**
- SPOT ELEVATION (DIRT GRADE)
 - HIGH POINT ELEVATION
 - MATCH EXISTING ELEVATION
 - PROPOSED CONTOUR
 - EXISTING CONTOUR
 - CONTOUR INTERVAL: 1 FOOT



SITE GRADING NOTES

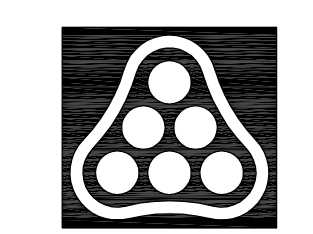
ALL FILL PLACED AS PART OF SITE GRADING SHALL BE COMPACTED TO TYPE B (MR-90) REQUIREMENTS.

ALL FILL MATERIAL SHALL BE BLADED SMOOTH AND SLOPED TO DRAIN.

NO WASTE MATERIAL SHALL BE PLACED IN ANY STREET RIGHT-OF-WAY OTHER THAN AS NECESSARY FOR STREET CONSTRUCTION AS SHOWN IN THESE PLANS.

THE LUMP SUM BID ITEM "SITE GRADING" SHALL INCLUDE PLACING, GRADING, AND COMPACTING OF SOIL MATERIAL TO THE REQUIREMENTS OF THIS GRADING PLAN; AND FOR ALL EQUIPMENT, LABOR, TOOLS, AND INCIDENTALS NECESSARY TO COMPLETE THE WORK.

THE ACTUAL EXCAVATION OF MATERIAL FOR SITE GRADING IS INCLUDED IN THE BID ITEM "UNCLASSIFIED EXCAVATION".



No.	Revision	By	Date
WEBB BUSINESS PARK STORM WATER DRAIN NO. 337 SITE GRADING PLAN JAMES L. ARMOUR, P.E. - CITY ENGINEER CITY OF WICHITA PROJECT NO. 468-84431 Professional Engineering Consultants, P.A. 303 S. TOPKA • WICHITA, KANSAS 67202 316-262-2691 • FAX 316-262-3003			
Designed by	BMM	Job No.	35-07593-003
Drawn by	BJS, TAT	Date	June 2007
			Sheet 7 of 29

Scaled 03-19-2008 11:46:28 AM by BJS
 Plot Scale 1:100 03-19-2008 3:26:05 PM
 Q:\2007\07593\003\07593-003-C-SITE GRADING PLAN