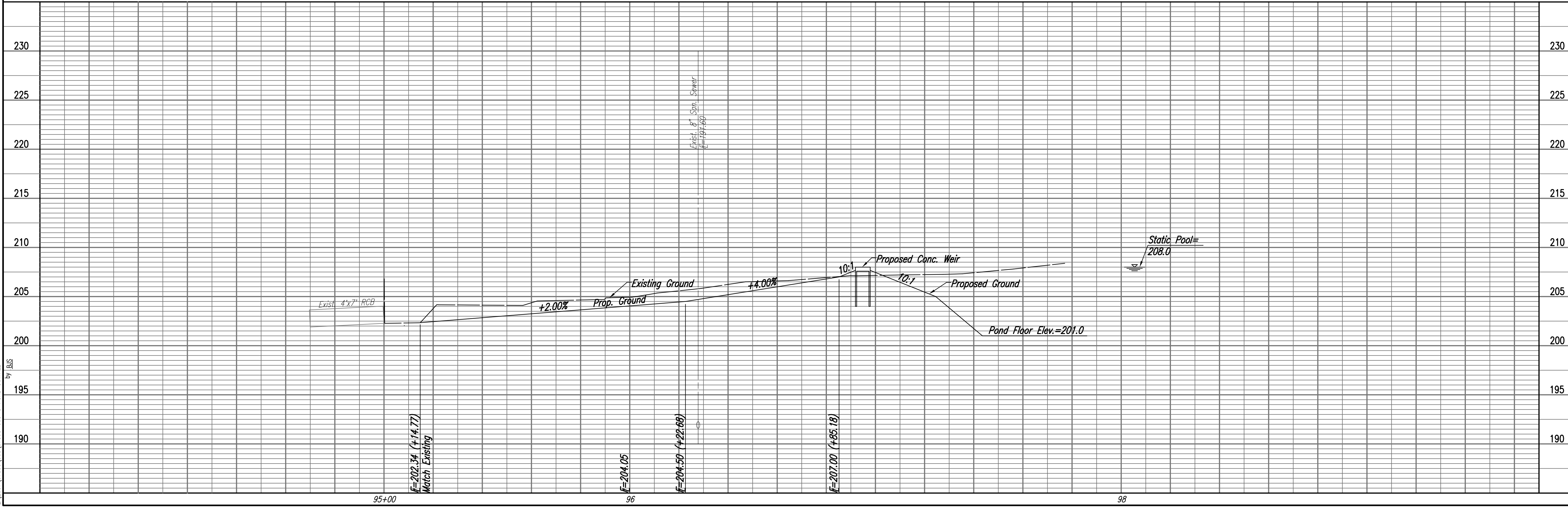


PLAN	CHECKED	BY	DATE
	CHECKED		

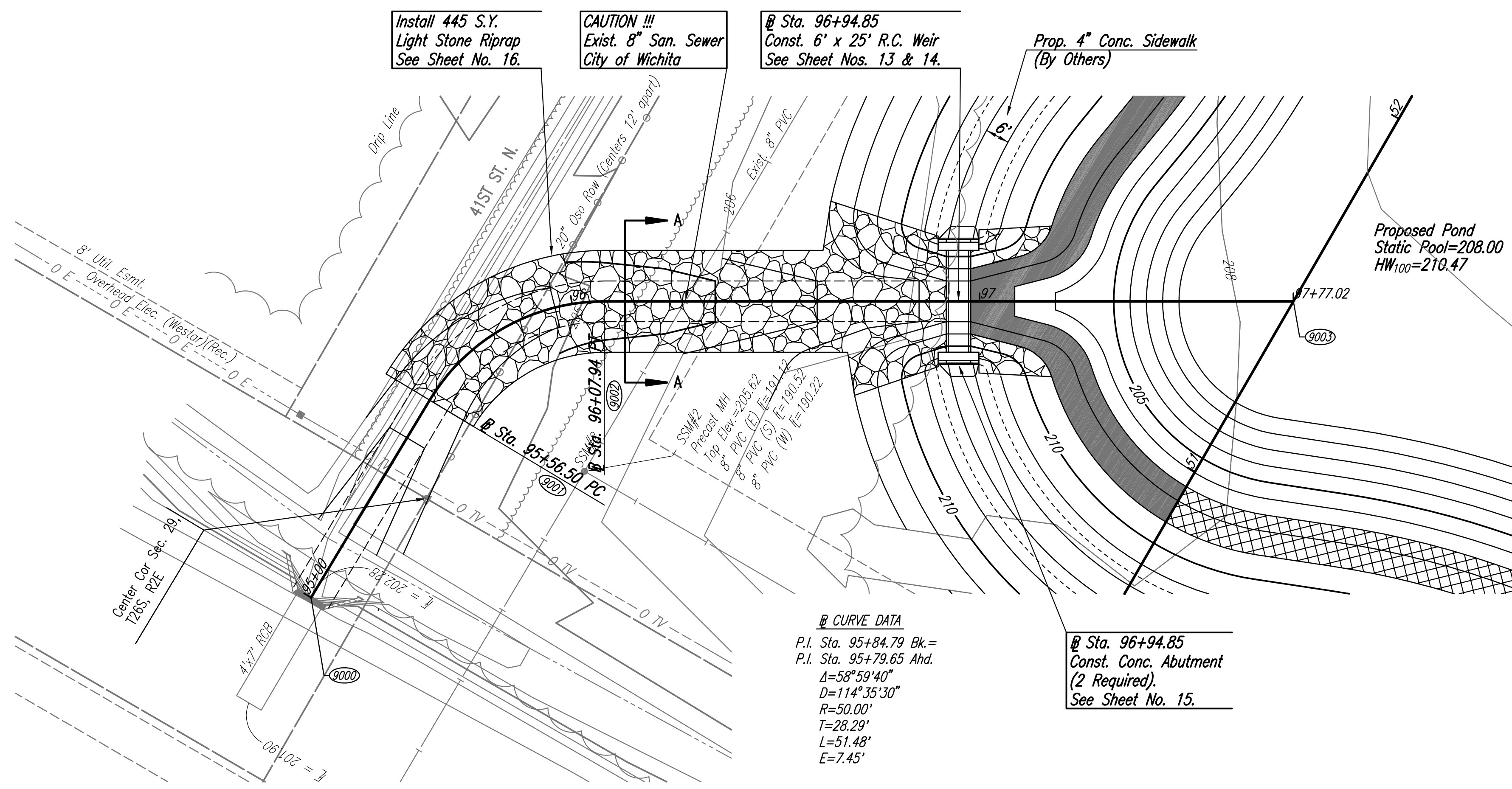
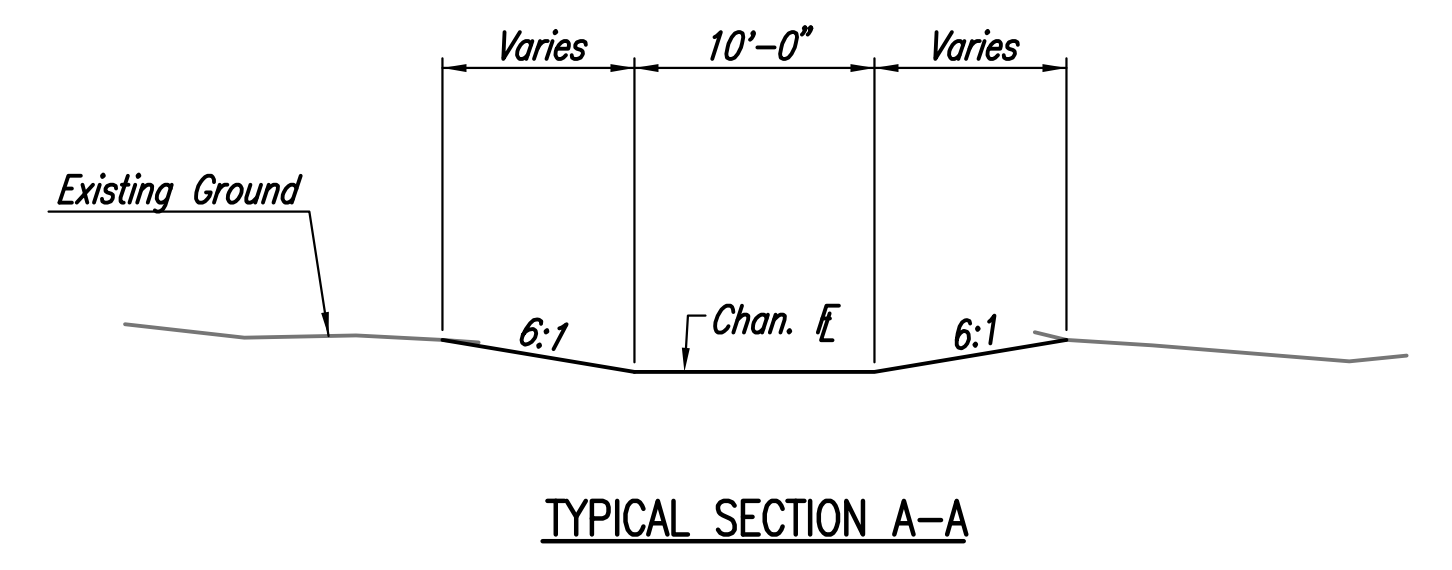
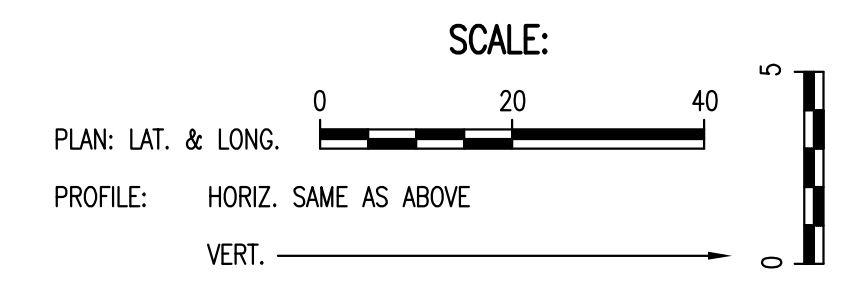
PROFILE	CHECKED	BY	DATE
	CHECKED		

Saved: 03-20-2008 7:32:58 AM by BUS
 Plot Scale
 03/20/2007 07:59:00 003:0705500003:03:40MM OUTFALL



COORDINATE LIST		
POINT	NORTH	EAST
9000	9,964.9696	7,321.3761
9001	9,964.9696	7,377.8800
9002	9,940.7693	7,420.7096
9003	9,795.8425	7,507.8096

9000 = COORDINATE POINT NO.
 SEE SHEET NO. 3 FOR PLAT COORDINATES



@ CURVE DATA
 P.I. Sta. 95+84.79 Bk.=
 P.I. Sta. 95+79.65 Ahd.
 $\Delta=58^{\circ}59'40''$
 $D=114^{\circ}35'30''$
 $R=50.00'$
 $T=28.29'$
 $L=51.48'$
 $E=7.45'$

@ Sta. 96+94.85
 Const. Conc. Abutment
 (2 Required).
 See Sheet No. 15.

POND OUTFALL
 WEBB BUSINESS PARK
 STORM WATER DRAIN NO.

Professional Engineering Consultants, P.A.
 303 S. TORRENS, WICHITA, KANSAS 67202
 316-262-2091 • FAX 316-262-3003

Designed By: BMM
 Drawn By: BUS, FAT

Job No.: 35-07593-003
 Date: JUNE 2007

James L. Armour, P.E. - CITY ENGINEER
 CITY OF WICHITA PROJECT NO. 468-XXXX

Sheet 10 of 29