

PAVING STREETS IN COUNTRY HOLLOW ADDITION PHASE 2

AN ADDITION TO THE CITY OF WICHITA
SEDGWICK COUNTY, KANSAS
JAMES L. ARMOUR, P.E. - CITY ENGINEER

GENERAL NOTES

- UNLESS SHOWN OR STATED OTHERWISE ON THESE DRAWINGS, MATERIALS AND CONSTRUCTION SHALL BE IN ACCORDANCE WITH CITY OF WICHITA CONCRETE PAVEMENT AND ASPHALTIC CONCRETE PAVEMENT SPECIFICATIONS.
- CONTRACTOR WILL BE REQUIRED TO PROVIDE A MINIMUM ADVANCE NOTICE OF SEVENTY-TWO (72) HOURS TO UTILITY COMPANIES PRIOR TO STARTING ANY EXCAVATION AS FOLLOWS:
KANSAS ONE-CALL 1-800-344-7233
OR 687-2470 (LOCAL WICHITA)
THE CONTRACTOR MUST NOTIFY THE FOLLOWING IN CASE OF AN EMERGENCY:
SBC (TELEPHONE) 800-870-8390
COX COMMUNICATIONS (CABLE) 262-0661
WESTAR (ELECTRIC) 383-8600
KANSAS GAS SERVICE (GAS) 832-3101
CITY OF WICHITA WATER & SEWER MAINT. 262-6000
AQUILA (GAS) 800-303-0357
- THE CONTRACTOR SHALL BE RESPONSIBLE FOR PRESERVING PROPERTY IRONS. THE CONTRACTOR WILL BE REQUIRED TO RE-ESTABLISH ANY PROPERTY IRONS WHICH ARE DAMAGED OR DESTROYED BY HIS CONSTRUCTION OPERATIONS. SUCH IRONS SHALL BE RE-ESTABLISHED BY A LICENSED LAND SURVEYOR IN ACCORDANCE WITH STATE LAWS.
- EXISTING UTILITIES AND THEIR LOCATIONS, AS SHOWN ON THE PLANS REPRESENT THE BEST INFORMATION OBTAINABLE FOR DESIGN. LOCATION INFORMATION HAS BEEN OBTAINED FROM THE VARIOUS UTILITY COMPANIES AND IS EITHER FROM COMPANY RECORD DRAWINGS OR COMPANY PROVIDED FIELD LOCATIONS. THE PLAN LOCATIONS SHOWN ARE NOT GUARANTEED. ADDITIONAL EXISTING UTILITIES MAY ALSO BE ENCOUNTERED.
- RUBBLE FROM THE REMOVAL OF MISCELLANEOUS STRUCTURES AND EXCESS EXCAVATION WHICH IS TO BE WASTED SHALL BE DISPOSED OF ON SITES TO BE PROVIDED BY THE CONTRACTOR. THESE SITES SHALL BE APPROVED BY THE ENGINEER AS TO SUITABILITY, APPEARANCE AND SITE LOCATION. LOCATIONS THAT, IN THE OPINION OF THE ENGINEER, WILL LEAVE AN UNSIGHTLY APPEARANCE WILL NOT BE APPROVED. ALL DISPOSAL SITES MUST BE APPROVED BY THE KANSAS DEPARTMENT OF HEALTH AND ENVIRONMENT. MATERIAL EITHER STOCKPILED OR DISPOSED OF IN A FLOOD PLAIN WOULD REQUIRE A KANSAS STATE BOARD OF AGRICULTURE PERMIT. ANY MATERIAL DUMPED IN WATERS OF THE UNITED STATES OR WETLANDS IS SUBJECT TO U.S. CORPS OF ENGINEERS PERMITTING REGULATIONS. ANY MATERIAL BURIED OR STOCKPILED BEYOND APPROVED CONSTRUCTION LIMITS WOULD REQUIRE ADDITIONAL ARCHAEOLOGICAL INVESTIGATIONS UNLESS BURIED IN A PREVIOUSLY APPROVED BORROW LOCATION.
- THIS PROJECT INCLUDES A CERTAIN AMOUNT OF ROLL TYPE CURB CONSTRUCTION. ROLL CURBS SHALL BE DEPRESSED THROUGH ALL DRIVEWAY OPENINGS WHEN SUCH DRIVES ARE CONSTRUCTED AS A PART OF THE PROJECT. NO MORE THAN 2 DRIVES 20 FEET IN WIDTH OR EQUIVALENT COMBINATIONS THEREOF ARE TO BE CONSTRUCTED WITH THIS PROJECT.
- TRANSITION CURB FROM FULL HEIGHT COMBINATION CURB AND GUTTER TO ROLL TYPE COMBINATION CURB AND GUTTER IS TO BE PAID AS BID FOR LINEAL FEET COMBINED CURB AND GUTTER (3 5/8" ROLL).
- A SAW CUT OF AT LEAST ONE-HALF THE DEPTH OF THE EXISTING SURFACE COURSE OR ONE-FOURTH THE DEPTH OF THE EXISTING TOTAL PAVEMENT THICKNESS SHALL BE PROVIDED AT LOCATIONS WHERE PROPOSED CONSTRUCTION ADJUTS AN EXISTING SURFACE OR PAVEMENT FOR WHICH PARTIAL REMOVAL OF THAT SURFACE OR PAVEMENT IS REQUIRED. SAW JOINT TO FACILITATE REMOVAL WITHIN THREE (3) FEET OF EXISTING JOINTS WILL NOT BE PERMITTED AND FOR SUCH INSTANCES THE LIMITS OF REMOVAL SHALL EXTEND TO THE EXISTING JOINT. SUCH SAW CUTS WILL NOT BE PAID FOR DIRECTLY AND THIS COST SHALL BE CONSIDERED AS SUBSIDIARY TO THE REMOVAL OF SURFACE OR PAVEMENT.
- CONTRACTOR SHALL RESEED AND MULCH ALL DISTURBED AREAS AS FOLLOWS:
BROME GRASS @ 200 LBS./ACRE
10-20-10 @ 200 LBS./ACRE
COST SHALL BE CONSIDERED SUBSIDIARY TO PROJECT SEEDING.

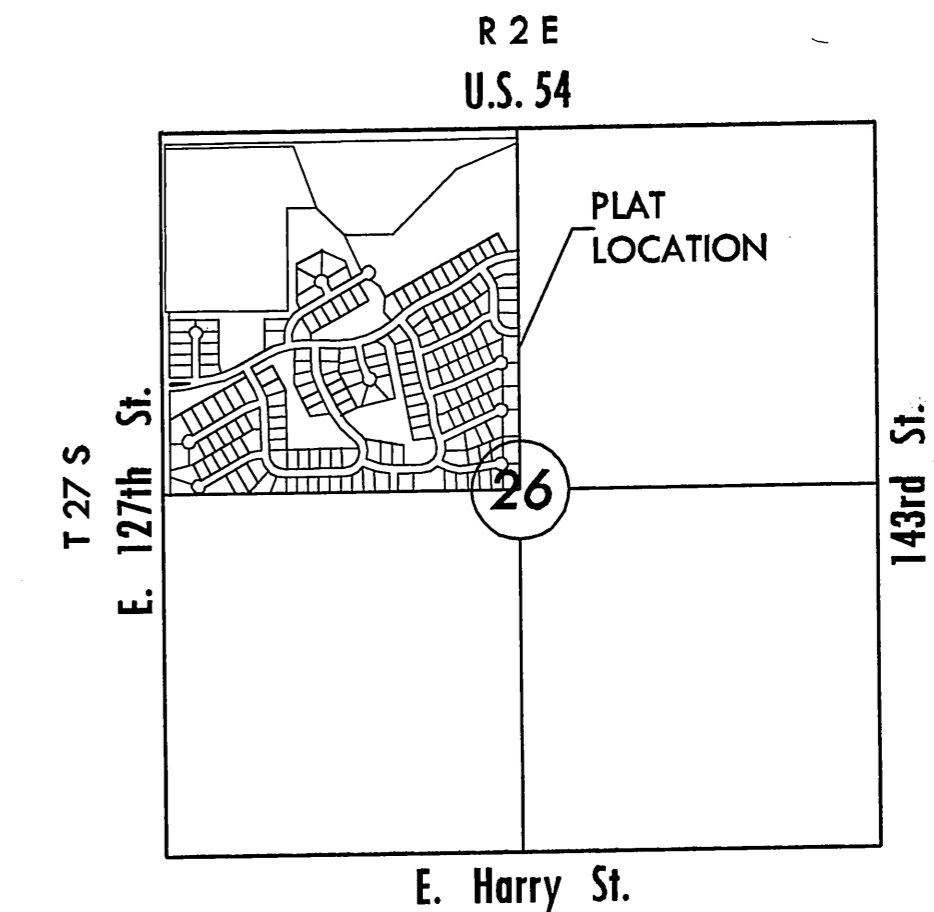
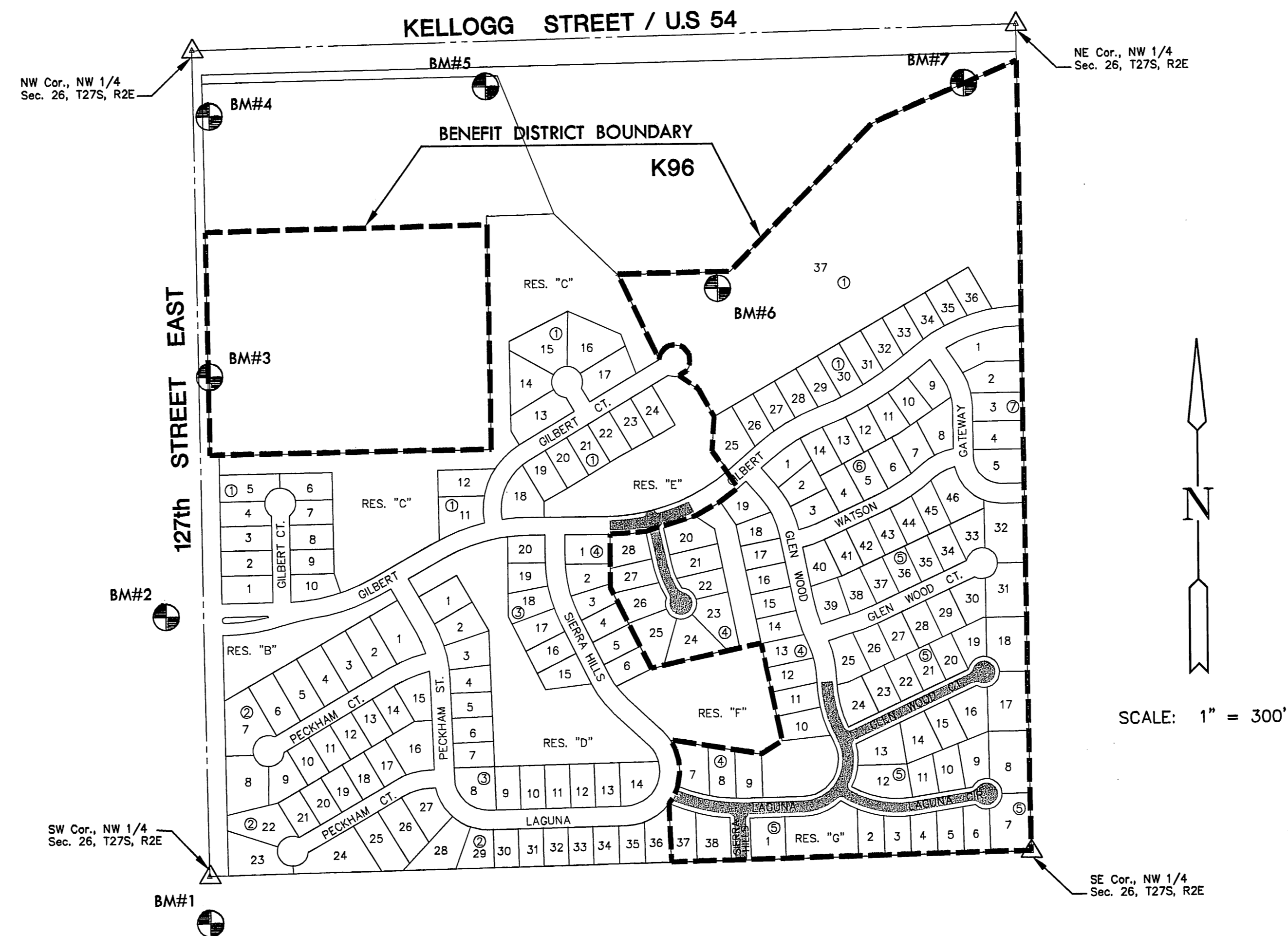
PROJECT LENGTH	
Gilbert	280 L.F.
Gilbert Ct.	250 L.F.
Laguna/Glenwood	922 L.F.
Sierra Hills	130 L.F.
Glen Wood Court	465 L.F.
Laguna Circle	454 L.F.
TOTAL	2501 L.F.

EARTHWORK SUMMARY	
EXCAVATION	2600 C.Y.
COMP. FILL (95%)	2770 C.Y.
LOOSE FILL	3300 C.Y.

* EXCESS CUT MATERIAL FROM EASEMENT GRADING SHALL BE USED TO BALANCE EARTHWORK.

LAGUNA/GLENWOOD: from the west line of Lot 7, Block 4 to the south line of Lot 12, Block 4;
SIERRA HILLS: from the southe line of Laguna to the south line of Lot 1, Block 5;
GLEN WOOD COURT: serving Lots 13 through 24, Block 5 from the east line of Glen Wood to and including the cul-de-sac;
GILBERT COURT: serving Lots 20 through 28, Block 4 from the south line of Gilbert to and including the cul-de-sac;
GILBERT: from the west line of Lot 28, Block 4 to the east line of Lot 20, Block 4.

PROJECT NO. 472-84351
OCA 766206



VICINITY MAP

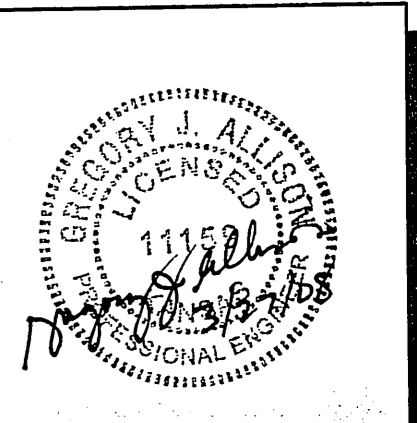
INDEX TO DRAWINGS

SHEET NO.	DESCRIPTION
1	TITLE SHEET
2-7	PAVING DETAILS
8	GILBERT
9	GILBERT COURT
10-11	LAGUNA/GLEN WOOD
12	LAGUNA CIRCLE
13	GLEN WOOD CT., SIERRA HILLS
14	EASEMENT GRADING
15	BUBBLE MAP
16-20	BMP DETAILS
21-30	CROSS SECTIONS
31-32	PLAT

BENCHMARKS

- BM #1 Railroad spike in South face of power pole, 25' +/- East and 70' +/- South of West Quarter Corner of Sec. 26, T 27 S, R 2 E.
Elev. = 1337.50 (NGVD)
- BM #2 Chiseled square on top of curb at East end of median island on Lincoln on West side of 127th Street East.
Elev. = 1349.55 (NGVD)
- BM #3 Railroad spike in Southwest face of power 4th pole South of Kellogg on East Side of 127th Street East, 973' South and 24' East of Northwest Corner Sec. 26, T 27 S, R 2 E.
Elev. = 1353.93 (NGVD)
- BM #4 Fence T-post at Northwest corner of property, 40' East of centerline 127th and 10' South of the South Kellogg right of way.
Elev. = 1360.81 (NGVD)
- BM #5 Fence T-post 10' South and 10' West of highway right of way corner, West side K-96 Interchange and South side Kellogg, 969' East and 122' South of Northwest corner Sec. 26, T 27 S, R 2 E.
Elev. = 1346.25 (NGVD)
- BM #6 Fence T-post 10' South and 10' West of highway right of way corner, East Side of K-96 Interchange and South side of Kellogg, 1696' East and 770' South of the Northwest corner Sec. 26, T 27 S, R 2 E.
Elev. = 1342.08 (NGVD)
- BM #7 Fence T-post 4' South of South Kellogg right of way fence, 145' West-Southwest of the Northeast property corner, 135' West and 176' South of the North Quarter corner of Sec. 26, T 27 S, R 2 E.
Elev. = 1326.40 (NGVD)

MKEC
ENGINEERING
CONSULTANTS, INC.
411 N. WEBB ROAD
WICHITA, KS. 67206
316-684-9600



PAVING PLANS
COUNTRY HOLLOW
PHASE 2

TITLE SHEET
SHEET TITLE
472-84084
PROJECT NUMBER

DFL / KKL / GJA
DESIGNED / DRAWN / CHECKED

ISSUED
March 2008

REVISED

SHEET NO.
1 of 32