

GENERAL NOTES

- UNLESS SHOWN OR STATED OTHERWISE ON THESE DRAWINGS, MATERIALS AND CONSTRUCTION SHALL BE IN ACCORDANCE WITH CITY OF WICHITA CONCRETE PAVEMENT AND ASPHALTIC CONCRETE PAVEMENT SPECIFICATIONS.
- CONTRACTOR WILL BE REQUIRED TO PROVIDE A MINIMUM ADVANCE NOTICE OF SEVENTY-TWO (72) HOURS TO UTILITY COMPANIES PRIOR TO STARTING ANY EXCAVATION AS FOLLOWS:
 KANSAS ONE-CALL 1-800-344-7233
 OR 687-2470 (LOCAL WICHITA)
 THE CONTRACTOR MUST NOTIFY THE FOLLOWING IN CASE OF AN EMERGENCY:
 SBC (TELEPHONE) 800-870-8390
 COX COMMUNICATIONS (CABLE) 262-0661
 WESTAR (ELECTRIC) 383-8600
 KANSAS GAS SERVICE (GAS) 832-3101
 CITY OF WICHITA WATER & SEWER MAINT. 262-6000
 AQUILA (GAS) 800-303-0357
- THE CONTRACTOR SHALL BE RESPONSIBLE FOR PRESERVING PROPERTY IRONS. THE CONTRACTOR WILL BE REQUIRED TO RE-ESTABLISH ANY PROPERTY IRONS WHICH ARE DAMAGED OR DESTROYED BY HIS CONSTRUCTION OPERATIONS. SUCH IRONS SHALL BE RE-ESTABLISHED BY A LICENSED LAND SURVEYOR IN ACCORDANCE WITH STATE LAWS.
- EXISTING UTILITIES AND THEIR LOCATIONS, AS SHOWN ON THE PLANS REPRESENT THE BEST INFORMATION OBTAINABLE FOR DESIGN. LOCATION INFORMATION HAS BEEN OBTAINED FROM THE VARIOUS UTILITY COMPANIES AND IS EITHER FROM COMPANY RECORD DRAWINGS OR COMPANY PROVIDED FIELD LOCATIONS. THE PLAN LOCATIONS SHOWN ARE NOT GUARANTEED. ADDITIONAL EXISTING UTILITIES MAY ALSO BE ENCOUNTERED.
- RUBBLE FROM THE REMOVAL OF MISCELLANEOUS STRUCTURES AND EXCESS EXCAVATION WHICH IS TO BE WASTED SHALL BE DISPOSED OF ON SITES TO BE PROVIDED BY THE CONTRACTOR. THESE SITES SHALL BE APPROVED BY THE ENGINEER AS TO SUITABILITY, APPEARANCE AND SITE LOCATION. LOCATIONS THAT, IN THE OPINION OF THE ENGINEER, WILL LEAVE AN UNSIGHTLY APPEARANCE WILL NOT BE APPROVED. ALL DISPOSAL SITES MUST BE APPROVED BY THE KANSAS DEPARTMENT OF HEALTH AND ENVIRONMENT. MATERIAL EITHER STOCKPILED OR DISPOSED OF IN A FLOOD PLAIN WOULD REQUIRE A KANSAS STATE BOARD OF AGRICULTURE PERMIT. ANY MATERIAL DUMPED IN WATERS OF THE UNITED STATES OR WETLANDS IS SUBJECT TO U.S. CORPS OF ENGINEERS PERMITTING REGULATIONS. ANY MATERIAL BURIED OR STOCKPILED BEYOND APPROVED CONSTRUCTION LIMITS WOULD REQUIRE ADDITIONAL ARCHAEOLOGICAL INVESTIGATIONS UNLESS BURIED IN A PREVIOUSLY APPROVED BORROW LOCATION.
- THIS PROJECT INCLUDES A CERTAIN AMOUNT OF ROLL TYPE CURB CONSTRUCTION. ROLL CURBS SHALL BE DEPRESSED THROUGH ALL DRIVEWAY OPENINGS WHEN SUCH DRIVES ARE CONSTRUCTED AS A PART OF THE PROJECT. NO MORE THAN 2 DRIVES 20 FEET IN WIDTH OR EQUIVALENT COMBINATIONS THEREOF ARE TO BE CONSTRUCTED WITH THIS PROJECT.
- TRANSITION CURB FROM FULL HEIGHT COMBINATION CURB AND GUTTER TO ROLL TYPE COMBINATION CURB AND GUTTER IS TO BE PAID AS BID FOR LINEAL FEET COMBINED CURB AND GUTTER (3 5/8" ROLL).
- A SAW CUT OF AT LEAST ONE-HALF THE DEPTH OF THE EXISTING SURFACE COURSES OR ONE-FOURTH THE DEPTH OF THE EXISTING TOTAL PAVEMENT THICKNESS SHALL BE PROVIDED AT LOCATIONS WHERE PROPOSED CONSTRUCTION ABUTS AN EXISTING SURFACE OR PAVEMENT FOR WHICH PARTIAL REMOVAL OF THAT SURFACE OR PAVEMENT IS REQUIRED. SAW JOINT TO FACILITATE REMOVAL WITHIN THREE (3) FEET OF EXISTING JOINTS WILL NOT BE PERMITTED AND FOR SUCH INSTANCES THE LIMITS OF REMOVAL SHALL EXTEND TO THE EXISTING JOINT. SUCH SAW CUTS WILL NOT BE PAID FOR DIRECTLY AND THIS COST SHALL BE CONSIDERED AS SUBSIDIARY TO THE REMOVAL OF SURFACE OR PAVEMENT.
- CONTRACTOR SHALL SEED AND MULCH ALL DISTURBED AREAS WITH PERENNIAL RYE GRASS AT A RATE OF 200 POUNDS PER ACRE. COST SHALL BE CONSIDERED SUBSIDIARY TO PROJECT SEEDING.

PROJECT LENGTH	
24TH ST	1160 L.F.
Chemsford	180 L.F.
Ridgehurst	655 L.F.
Graystone Cir.	465 L.F.
Graystone	540 L.F.
TOTAL	3000 L.F.

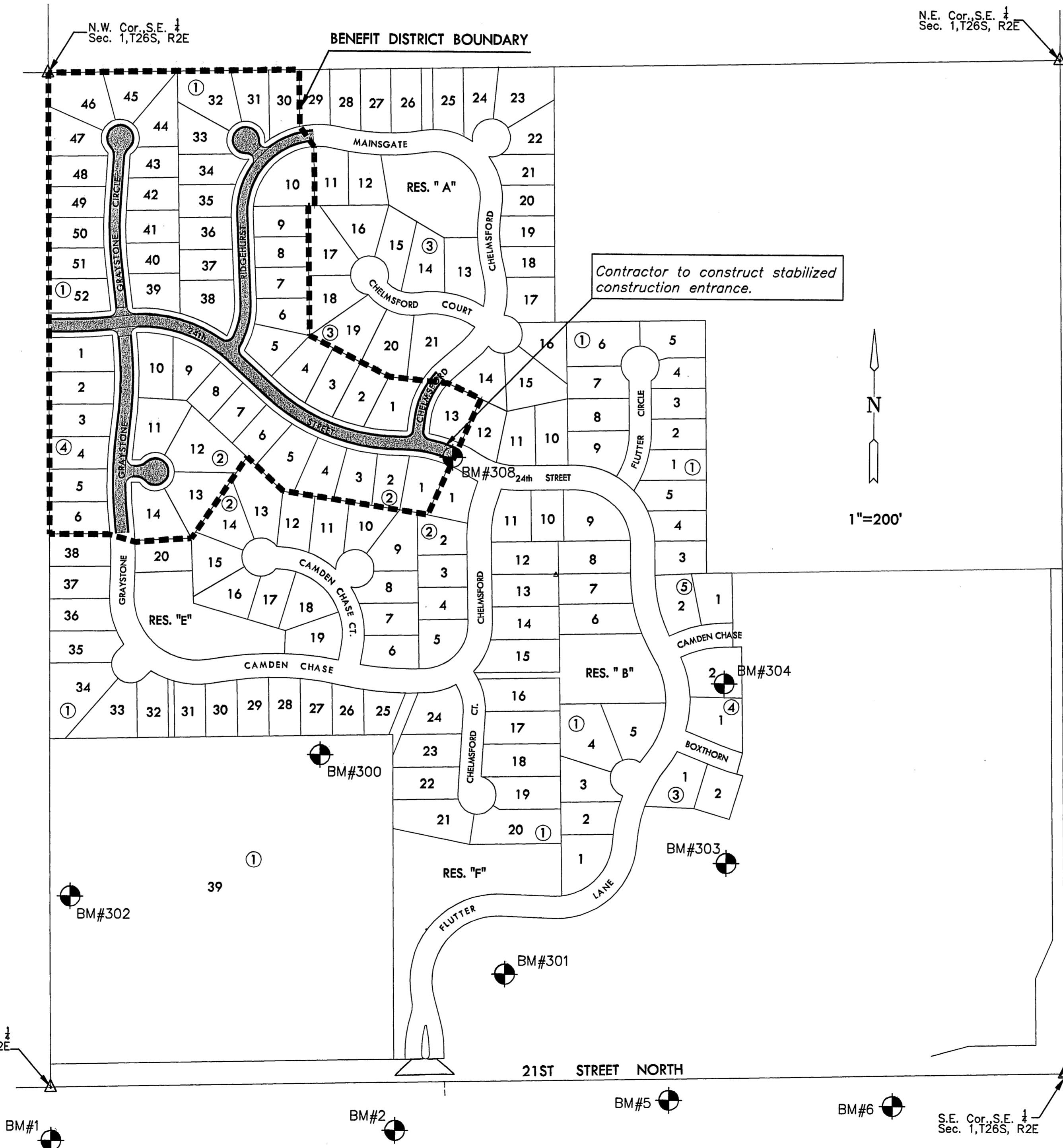
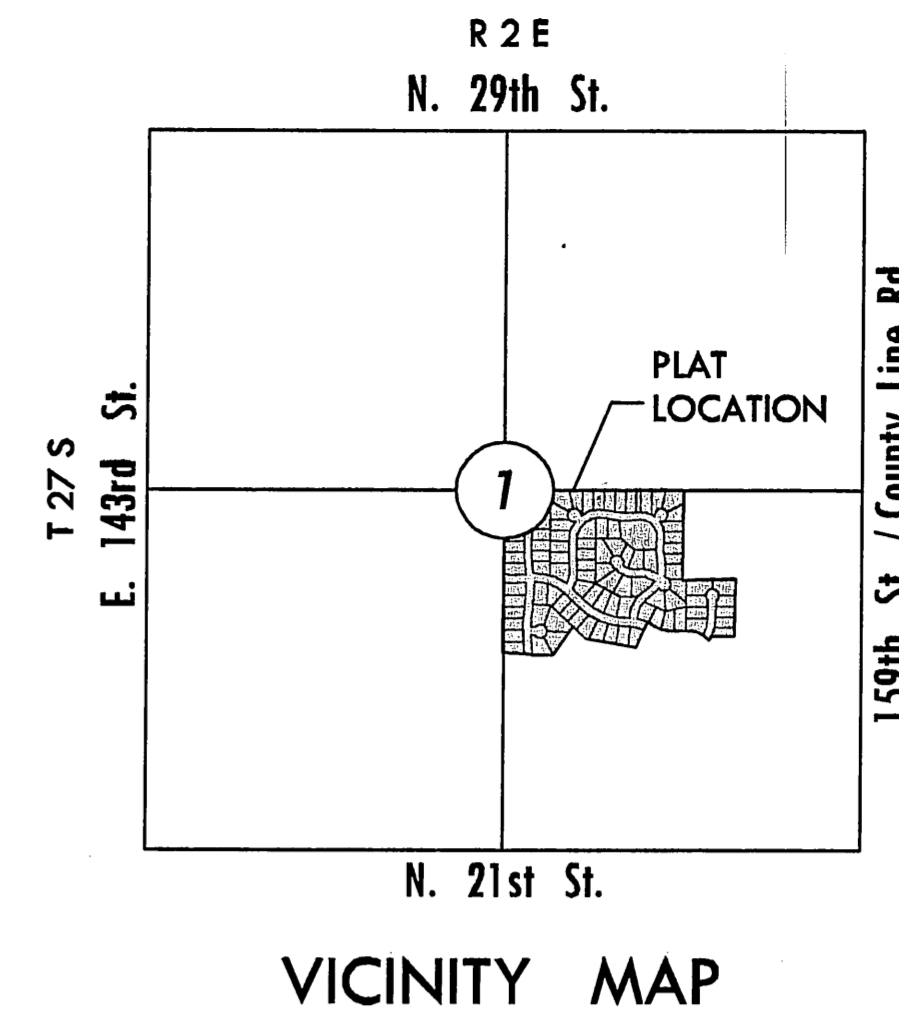
EARTHWORK SUMMARY	
EXCAVATION	3000 C.Y.
LOOSE FILL (90%)	2900 C.Y.

PAVING IN MONARCH LANDING SECOND ADDITION

AN ADDITION TO THE CITY OF WICHITA
 SEDGWICK COUNTY, KANSAS
 JAMES L. ARMOUR, P.E., CITY ENGINEER

24th STREET: FROM THE WEST LINE OF MONARCH LANDING SECOND ADD. TO THE EAST LINE OF LOT 1, BLK. 2;
CHELMSFORD: FROM THE NORTH LINE OF 24th STREET TO THE NORTH LINE OF LOT 13, BLK. 1;
RIDGEHURST/RIDGEHURST CT: FROM THE NORTH LINE OF 24th STREET TO THE EAST LINE OF LOT 10, BLK. 3;
GRAYSTONE/GRAYSTONE COURT: FROM THE SOUTH LINE OF LOT 6, BLK. 4 TO THE SOUTH LINE OF 24TH STREET;
GRAYSTONE CIRCLE: SERVING LOTS 39 THROUGH 52, BLOCK 1, FROM THE NORTH LINE OF 24th STREET TO AND INCLUDING THE CUL-DE-SAC.

PROJECT NO. 472-84612
OCA 766202



INDEX TO DRAWINGS

SHEET NO.	DESCRIPTION
1	TITLE SHEET
2-8	PAVING DETAILS
9-11	24TH ST
12-13	RIDGEHURST
14	GRAYSTONE CIR
15-16	GRAYSTONE
17	BUBBLE MAP
18-22	BMP DETAILS
23-33	CROSS SECTIONS
34	PLAT

BENCHMARKS

- BM #1 Railroad spike in north side of power pole, 48' South of the South Quarter Corner of Sec. 1, T27S, R2E. Elev. = 1364.78 NGVD 29.
- BM #2 Railroad spike in north side of power pole, 924' East and 50' South of the South Quarter Corner of Sec. 1, T27S, R2E. Elev. = 1372.64 NGVD 29.
- BM #5 Railroad spike in north side of power pole, 1040' West and 51' South of the Southeast corner of Section 1, Township 27 South, Range 2 East. Elev. = 1368.50 NGVD 29.
- BM #6 Chiseled square on top of south curb of 21st Street North, 454' East of centerline of 159th Street East. Elev. = 1372.64 NGVD 29.
- BM #300 Top of fence T-post 6" below ground, 206' West and 21' South of the northeast corner of Lot 39, Block 1, Monarch Landing. Elev. = 1371.15 NGVD 29.
- BM #301 Top of fence T-post 6" below ground, 180' South and 213' West of the southwest corner of Lot 1, Block 1, Monarch Landing. Elev. = 1369.69 NGVD 29.
- BM #302 Top of fence T-post 6" below ground, 413' North and 85' East of the southwest corner of Lot 39, Block 1, Monarch Landing. Elev. = 1367.80 NGVD 29.
- BM #303 Top of fence T-post 6" below ground, 148' South and 20' West of the southeast corner of Lot 2, Block 3, Monarch Landing. Elev. = 1369.74 NGVD 29.
- BM #304 Top of fence T-post 6" below ground, 82' East and 37' North of the southwest corner of Lot 2, Block 4, Monarch Landing. Elev. = 1372.90 NGVD 29.
- BM #308 Top of fence T-post 6" below ground, 8' NNE of the northwest corner of Lot 1, Block 2, Monarch Landing. Elev. = 1375.29 NGVD 29.

MKEC
 ENGINEERING
 CONSULTANTS, INC.
 411 N. WEBB ROAD
 WICHITA, K.S. 67206
 316-684-9600

GREGORY J. ALLISON
 LICENSED SURVEYOR
 11159
 PROFESSIONAL SEAL

PAVING PLANS
MONARCH LANDING SECOND ADD.
PHASE 1

TITLE SHEET
 SHEET TITLE
472-84612
 PROJECT NUMBER

DFL MKK GJA
 DESIGNED DRAWN CHECKED

ISSUED
 March 2008

REVISED

SHEET NO.
1 of 34

PLOTTER: PLOTX, March 28, 2008 @ 10:27AM

J:\CIVIL\06201\07165\PAV\PAV_07165_LT.DWG