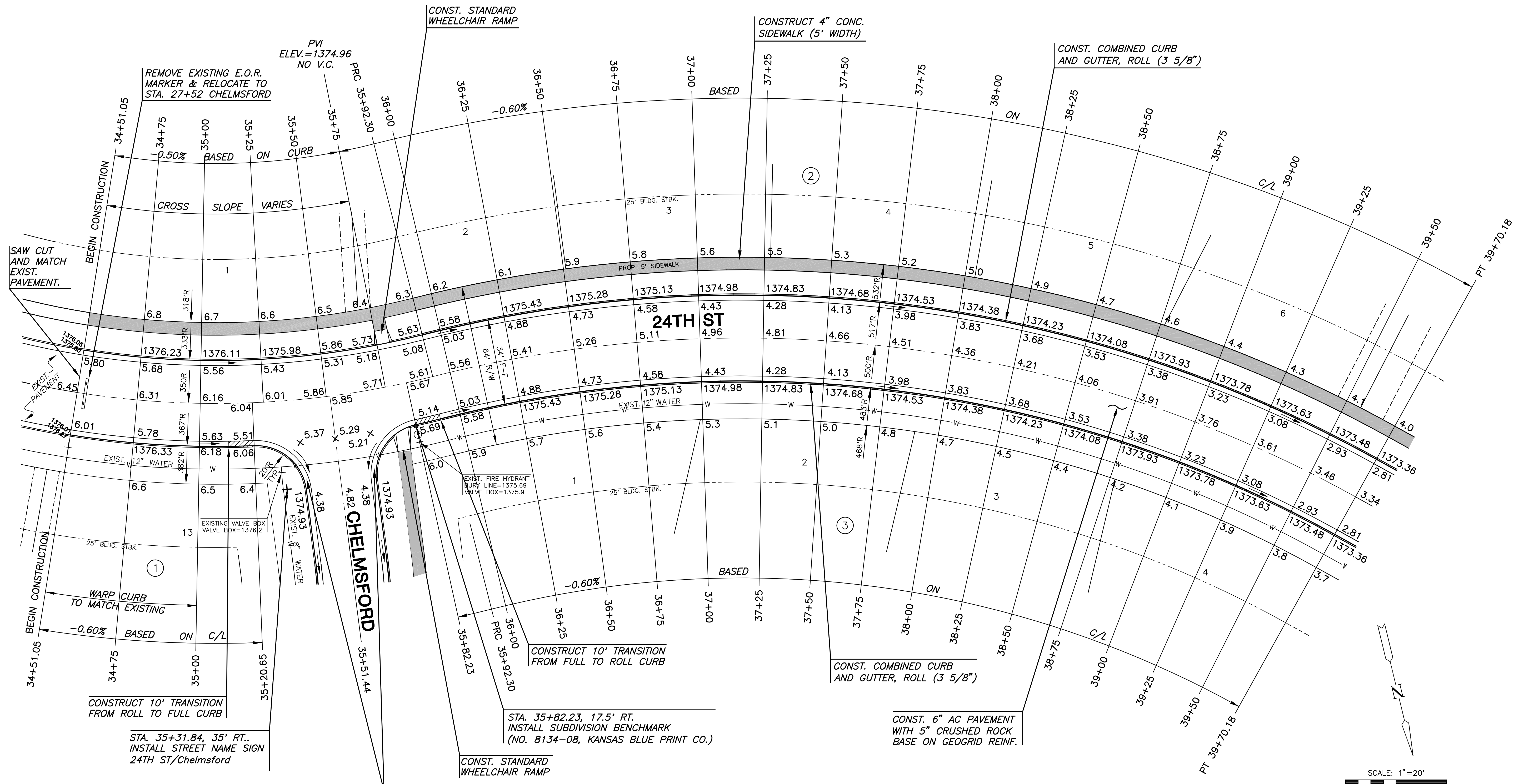


PAVING PLANS
MONARCH LANDING SECOND ADD.
PHASE 1



24TH ST
SHEET TITLE
472-84612
PROJECT NUMBER

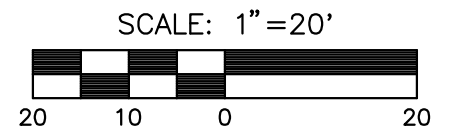
DFL
DESIGN BY
MK
DRAWN BY
GJA
CHECKED BY

ISSUED
March 2008
REVISED

SHEET NO.
9 of 34

SUBDIVISION BENCH MARKS				
NO.	STREET AND STATION	FROM CL	DESCRIPTION	ELEVATIONS
1	24TH STREET, STA. 35+82.23	17.5' RT	TOP OF CURB AT SW. END OF CURB RETURN OF VALLEY GUTTER	1375.69
2	24TH STREET, STA. 41+54.16	17.5' RT	TOP OF CURB AT NW. END OF CURB RETURN OF VALLEY GUTTER	1373.16
3	24TH STREET, STA. 44+51.16	17.5' RT	TOP OF CURB AT NW. END OF CURB RETURN OF VALLEY GUTTER	1373.08
4	RIDGEHURST, STA. 15+63.15	14.5' RT	TOP OF CURB AT NE. END OF CURB RETURN OF VALLEY GUTTER	1368.74
5	GRAYSTONE CIR., STA. 12+75	14.5' RT	TOP OF CURB AT N. END OF CURB INLET	1370.79
6	GRAYSTONE, STA. 13+57.85	17.5' RT	TOP OF CURB AT N. END OF CURB RETURN OF VALLEY GUTTER	1374.27

NOTE: CONTRACTOR SHALL INSTALL SUBDIVISION BENCH MARKS ("FLAT SURVEY MARKERS NO. 8134-08 3" TOP DIAMETER" PROVIDED BY KANSAS BLUE PRINT CO., INC.) COSTS TO BE CONSIDERED SUBSIDIARY TO CONSTRUCTION OF COMBINED CURB AND GUTTER.



LEGEND

—+— STREET SIGN & SIGN LOCATION
(SEE SIGN ASSEMBLY TABLE
FOR TYPE & STATION OF SIGN)

NOTE:
TOP OF CURB ELEVATIONS SHOWN
ARE FOR FULL CURB. CONSTRUCT
CURB AND GUTTER AS NOTED.

PLOTTED: Friday, March 28, 2008 @ 10:07AM

J:\CIVIL\06201\07165\PAV\BND5\07165_E1.DWG