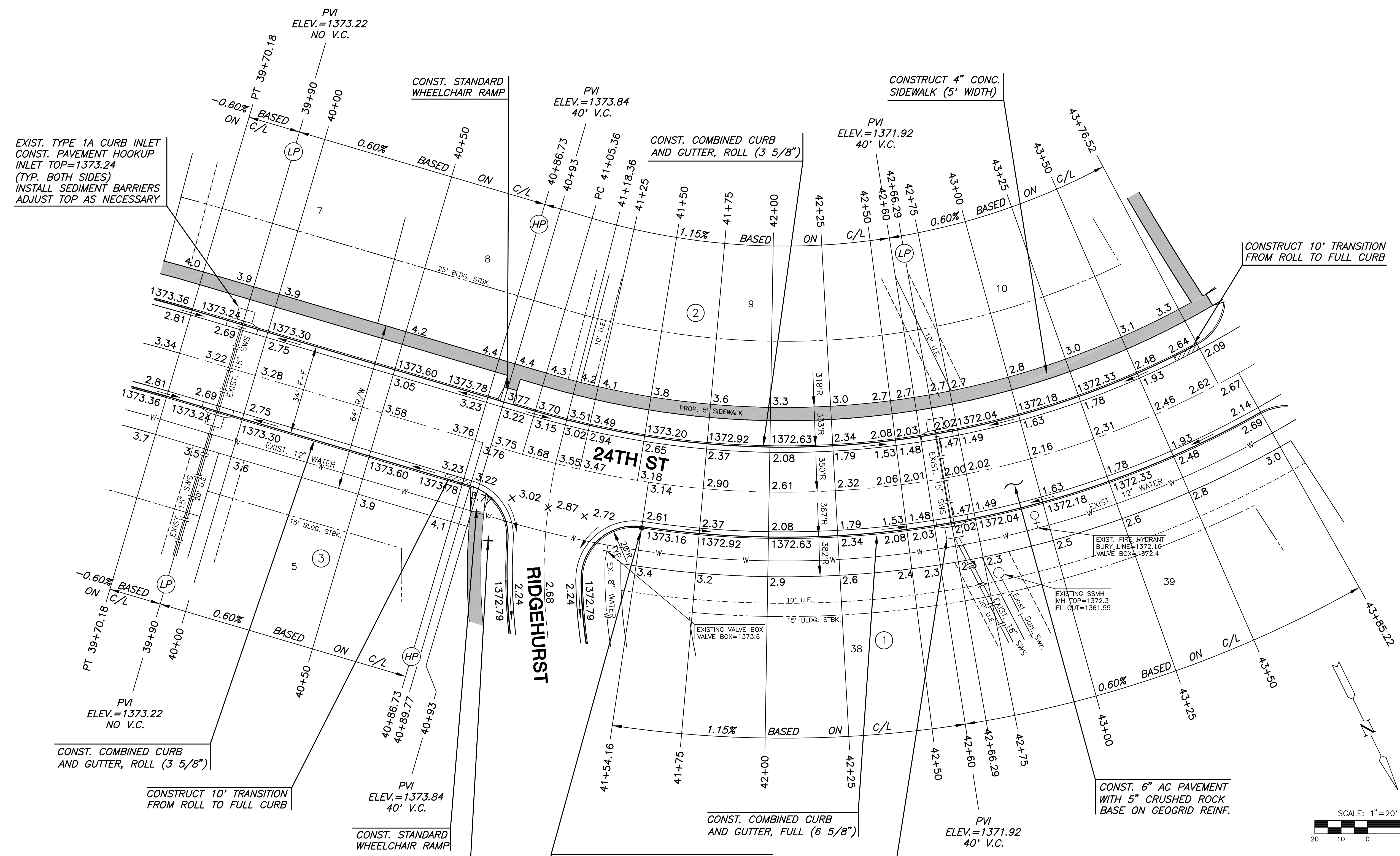


PAVING PLANS
MONARCH LANDING SECOND ADD.
PHASE 1



EXIST. TYPE 1A CURB INLET
CONST. PAVEMENT HOOKUP
INLET TOP=1373.24
(TYP. BOTH SIDES)
INSTALL SEDIMENT BARRIERS
ADJUST TOP AS NECESSARY

CONST. COMBINED CURB
AND GUTTER, ROLL (3 5/8")

CONSTRUCT 10' TRANSITION
FROM ROLL TO FULL CURB

PVI
ELEV.=1373.84
40' V.C.
CONST. STANDARD
WHEELCHAIR RAMP

STA. 41+02.15, 35' RT.
INSTALL SUBDIVISION BENCHMARK
24TH ST/Ridgehurst

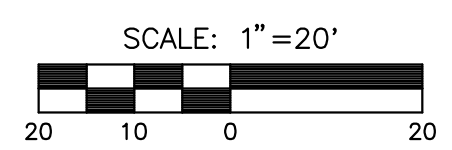
STA. 41+54.16, 17.5' RT.
INSTALL SUBDIVISION BENCHMARK
(NO. 8134-08, KANSAS BLUE PRINT CO.)

CONST. COMBINED CURB
AND GUTTER, FULL (6 5/8")

EXIST. TYPE 1A CURB INLET
CONST. PAVEMENT HOOKUP
INLET TOP=1372.02
(TYP. BOTH SIDES)
INSTALL SEDIMENT BARRIERS
ADJUST TOP AS NECESSARY

CONST. 6" AC PAVEMENT
WITH 5" CRUSHED ROCK
BASE ON GEOGRID REINF.

CONSTRUCT 10' TRANSITION
FROM ROLL TO FULL CURB



LEGEND

⊕ STREET SIGN & SIGN LOCATION
(SEE SIGN ASSEMBLY TABLE
FOR TYPE & STATION OF SIGN)

NOTE:
TOP OF CURB ELEVATIONS SHOWN
ARE FOR FULL CURB. CONSTRUCT
CURB AND GUTTER AS NOTED.

24TH ST
SHEET TITLE
472-84612
PROJECT NUMBER

DFL
DESIGN BY
MK
DRAWN BY
GJA
CHECKED BY

ISSUED
March 2008
REVISED

SHEET NO.
10 of 34