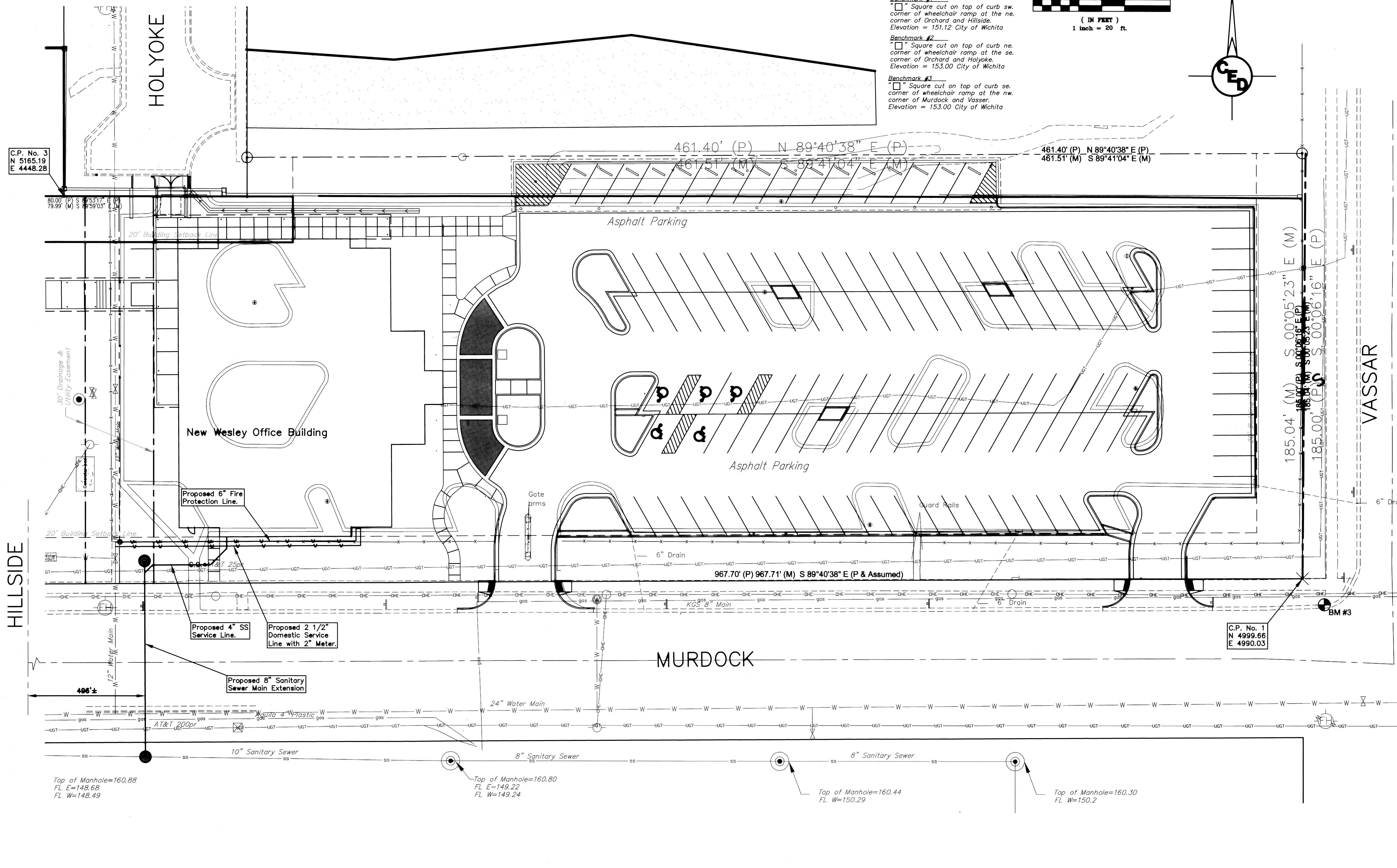


**Benchmark #1**  
 Square cut on top of curb sw. corner of wheelchair ramp at the ne. corner of Orchard and Hillside. Elevation = 151.12 City of Wichita

**Benchmark #2**  
 Square cut on top of curb ne. corner of wheelchair ramp at the se. corner of Orchard and Holyoke. Elevation = 153.00 City of Wichita

**Benchmark #3**  
 Square cut on top of curb se. corner of wheelchair ramp at the nw. corner of Murdock and Vassar. Elevation = 153.00 City of Wichita



C.P. No. 3  
 N 5165.19  
 E 4448.28

C.P. No. 1  
 N 4999.66  
 E 4990.03

**HORIZONTAL CONTROL POINTS**

C.P. NO. 1	N 4999.66 E 4990.03	"X" Cut (Found) in sidewalk (SE Cor. of Lot 1, Block 1)
C.P. NO. 2	N 4994.45 E 4022.33	"X" Cut (Found) in sidewalk (SW Cor. of Lot 1, Block 1)
C.P. NO. 3	N 5165.19 E 4448.28	5/8" Rebar w/RLS 1294 Cap (SW R/W Cor. of Holyoke, N. side of Lot.)

**SURVEY DISCLAIMER:**  
 TOPOGRAPHIC SURVEY USED IN PREPARING PLANS WAS PROVIDED BY ARROWHEAD LAND SURVEYING, 13110 E. MAPLE GROVE ROAD, MT. HOPE, KS 67108 (316-445-2221). ENGINEER DOES NOT GUARANTEE SURVEY ELEVATIONS FOR ACCURACY. CONTRACTOR SHALL VERIFY ELEVATIONS AND NOTIFY ENGINEER OF ANY DISCREPANCIES.

UTILITIES SHOWN REPRESENT THE BEST INFORMATION AVAILABLE FOR DESIGN. ADDITIONAL UTILITIES MAY BE PRESENT ON THIS PROJECT. THE CONTRACTOR SHALL BE RESPONSIBLE FOR DETERMINING THE EXACT LOCATION, DEPTH AND SIZE OF ALL UNDERGROUND UTILITIES PRIOR TO CONSTRUCTION. THE CONTRACTOR SHALL BE LIABLE FOR ANY DAMAGE CAUSED BY THE FAILURE TO DO SO.

C.O.W. PROJ. NO.: PPW (607853)	
<b>CERTIFIED ENGINEERING DESIGN, P.A.</b>	
	810 WEST DOUGLAS, SUITE C
	WICHITA, KANSAS 67203
	PH: (316) 262-8808 FAX: (316) 262-1669
SHEET C2.2	TOTAL C2.3

**SPANGENBERG PHILLIPS ARCHITECTURE**  
 121 N. Mead, Suite 201, Wichita, KS 67202  
 TEL: 316.267.4002 FAX: 316.267.1509  
 www.spangenbergphillips.com

**WESLEY MEDICAL CENTER  
 MEDICAL OFFICE BUILDING**

SITE PLAN  
 C2.2