

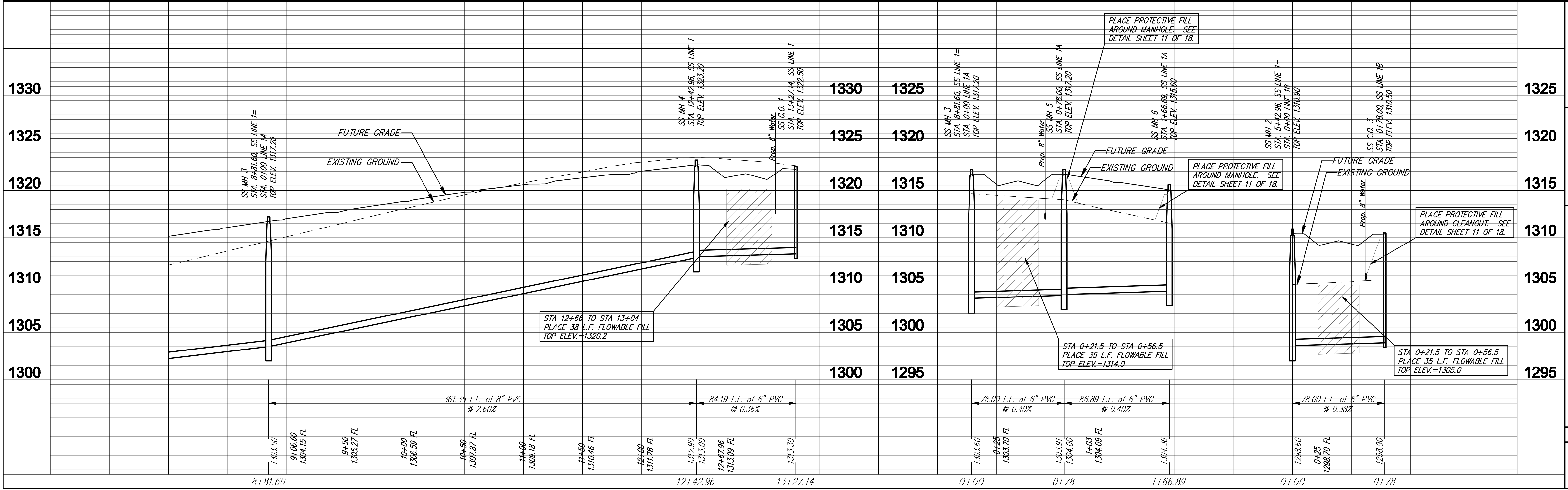
SEWER TO BE BACKFILLED WITH SAND AND FLUSHED AND VIBRATED PER CITY OF WICHITA STANDARD SPECIFICATIONS FROM STA. 8+82 TO STA. 12+43 LINE 1. SUITABILITY OF EXCAVATED SAND FOR USE AS BACKFILL WILL BE DETERMINED BY THE ENGINEER.

CAUTION: OVERHEAD ELECTRIC

SEWER SERVICE TABLE

NUMBER	TYPE	LOCATION			FOR INFORMATION ONLY	
		LOT NO.	BLOCK NO.	LINE NO.	STATION \ DIRECTION	APPROXIMATE LENGTH 4" PIPE
6	8" X 4" Tee Saddle	4	1	1	9+50	5' 10'
7	Manhole Stub	6	1	1	12+42.96/R	5' 10'
8	Manhole Stub	2	1	1	12+42.96/L	5' 10'
9	8" X 4" Double Wye	7	2	1	13+27.14/R	6' 10'
10	8" X 4" Double Wye	6	2	1	13+27.14/L	6' 10'
11	8" X 4" Double Wye	2	3	1B	0+78/R	5' 10'
12	8" X 4" Double Wye	3	3	1B	0+78/L	5' 10'

NOTE: Vertical Riser Pipe shall be extended to 2' minimum above ground water elevation and 4' maximum below proposed ground elevation.



**Ruebber & DeBorja, P.A.**  
 Engineering & Construction  
 1000 S. W. 10th St., Suite 200  
 Wichita, KS 67202  
 Phone: 316-261-1111  
 Fax: 316-261-1112  
 Email: info@ruebber.com

**PROJECT NUMBER:** 468-84480  
**DATE:** Jan. 23, 2008  
**PROJECT TITLE:** CAMBRIA ADDITION SANITARY SEWER WICHITA, KANSAS  
**SHEET:** 18 OF 18