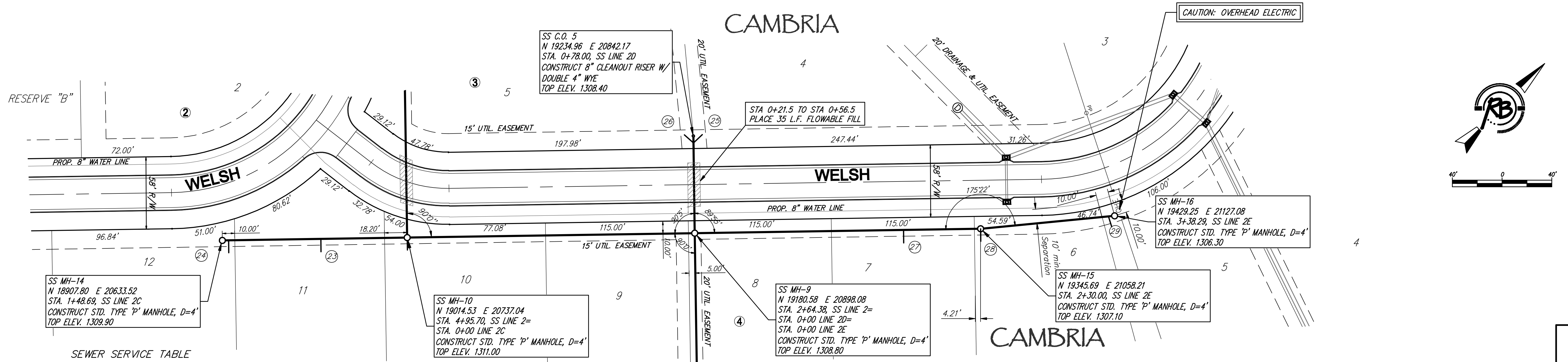


CAMBRIA

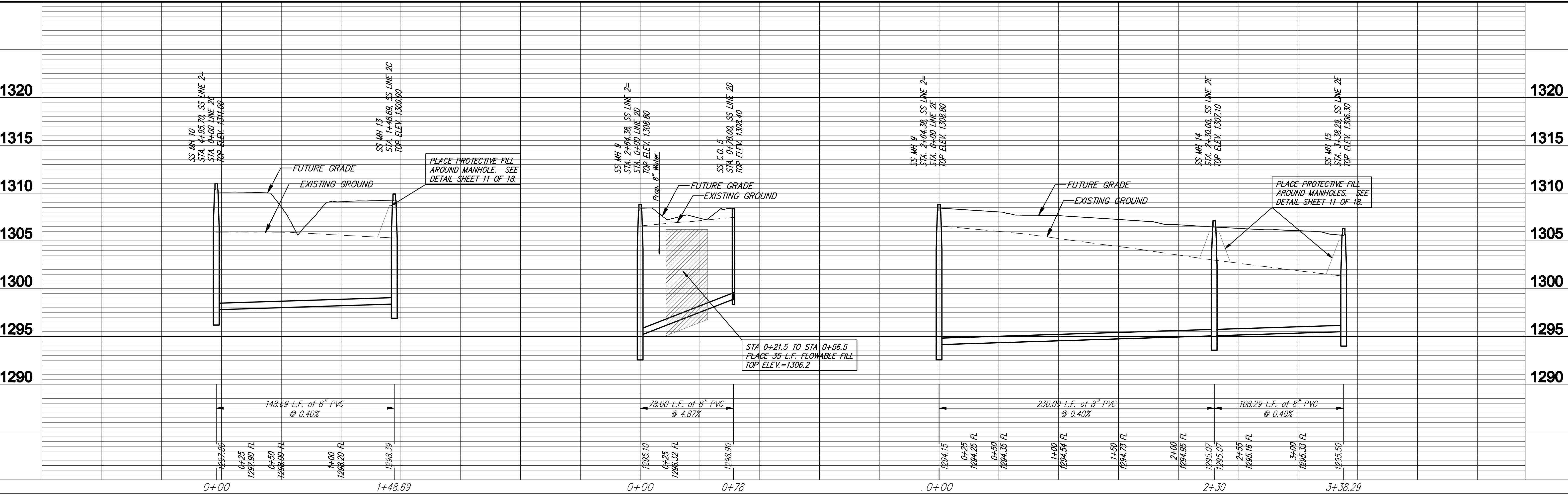
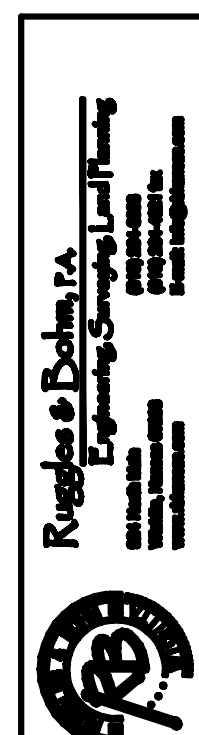


SEWER SERVICE TABLE

| NUMBER | TYPE | LOCATION | | | | FOR INFORMATION ONLY | |
|--------|--------------------|----------|-----------|----------|---------------------|----------------------------|----------|
| | | LOT NO. | BLOCK NO. | LINE NO. | STATION \ DIRECTION | APPROXIMATE LENGTH 4" PIPE | VERTICAL |
| 23 | 8" X 4" Saddle Tee | 11 | 4 | 2C | 0+69 | 6' | 10' |
| 24 | 8" X 4" Saddle Tee | 12 | 4 | 2C | 1+44 | 6' | 10' |
| 25 | 8" X 4" Double Wye | 4 | 3 | 2D | 0+78/R | 5' | 10' |
| 26 | 8" X 4" Double Wye | 5 | 3 | 2D | 0+78/L | 5' | 10' |
| 27 | 8" X 4" Saddle Tee | 7 | 4 | 2E | 1+68 | 8' | 10' |
| 28 | Manhole Stub | 6 | 4 | 2E | 2+30 | 6' | 10' |
| 29 | 8" X 4" Saddle Tee | 5 | 4 | 2E | 3+33 | 6' | 10' |

NOTE: Vertical Riser Pipe shall be extended to 2' minimum above ground water elevation and 4' maximum below proposed ground elevation.

SEWER TO BE BACKFILLED WITH SAND AND FLUSHED AND VIBRATED PER CTY OF WICHITA STANDARD SPECIFICATIONS FROM STA. 0+00 TO STA. 1+48 LINE 2C AND STA. 0+00 TO STA. 3+38 LINE 2E. SUITABILITY OF EXCAVATED SAND FOR USE AS BACKFILL WILL BE DETERMINED BY THE ENGINEER.



PROJECT NUMBER: 468-84480

DATE: Jan. 23, 2008

PROJECT TITLE: CAMBRIA ADDITION SANITARY SEWER WICHITA, KANSAS

06 Line 2c & 2d & 2ef

18