

SS MH-EXISTING C
N 18395.80 E 20212.20
STA. 0+00.00, SS LINE 3
CONSTRUCT STD. TYPE 'P' MANHOLE, D=4'
TOP ELEV. 1305.05

SS MH-18
N 18664.14 E 20241.80
STA. 2+73.84, SS LINE 3=
STA. 0+00, SS LINE 3A
CONSTRUCT STD. TYPE 'P' MANHOLE, D=4'
TOP ELEV. 1312.40

SS MH-17
N 18474.14 E 20242.06
STA. 0+83.84, SS LINE 3
CONSTRUCT STD. TYPE 'P' MANHOLE, D=4'
TOP ELEV. 1306.30

STA 3+02 TO STA 3+50
PLACE 35 L.F. FLOWABLE FILL
SS C.O. 6
N 18742.24 E 20312.83
STA. 3+79.40, SS LINE 3
CONSTRUCT 8" CLEANOUT RISER W/ 4" WYE
TOP ELEV. 1310.60

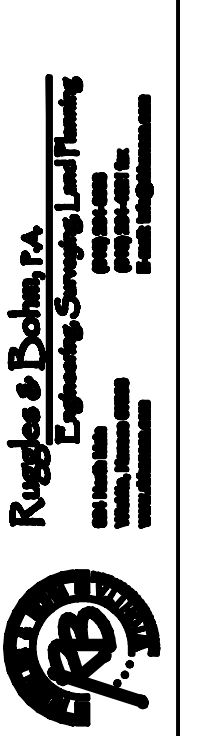
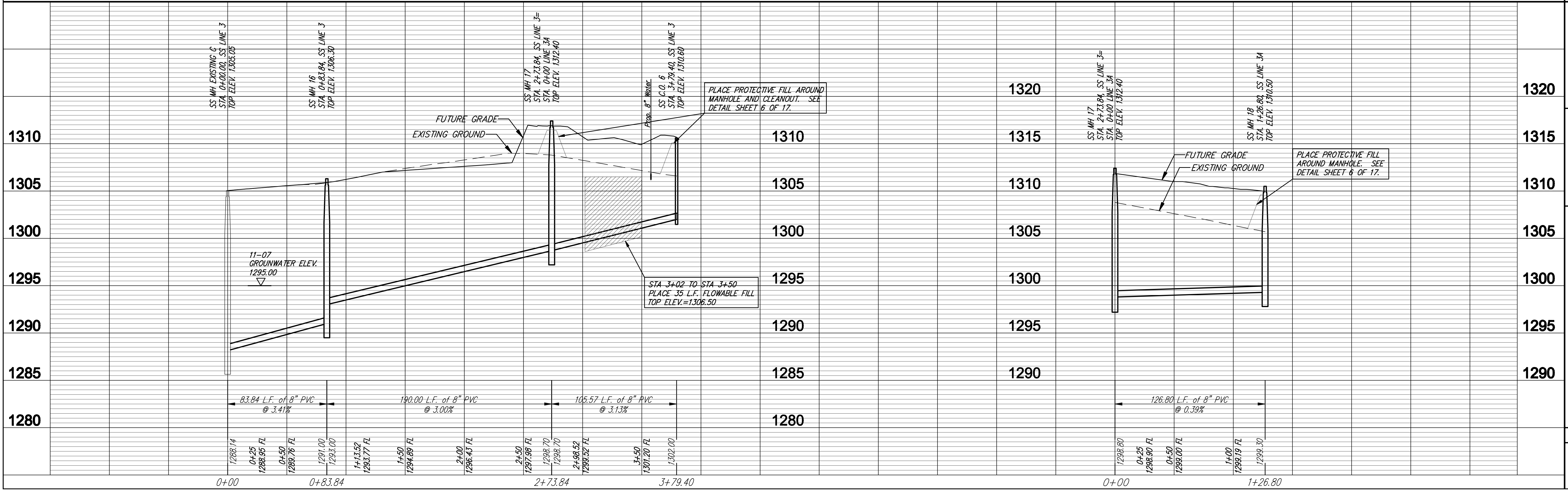
SS MH-19
N 18670.50 E 20368.44
STA. 1+26.80, SS LINE 3A
CONSTRUCT STD. TYPE 'P' MANHOLE, D=4'
TOP ELEV. 1310.50

SEWER TO BE BACKFILLED WITH SAND AND FLUSHED AND VIBRATED PER CTY OF WICHITA STANDARD SPECIFICATIONS FROM STA. 0+00 TO STA. 1+26.80 LINE 3A. SUITABILITY OF EXCAVATED SAND FOR USE AS BACKFILL WILL BE DETERMINED BY THE ENGINEER.

SEWER SERVICE TABLE

NUMBER	TYPE	LOCATION			FOR INFORMATION ONLY	
		LOT NO.	BLOCK NO.	LINE NO.	STATION\ DIRECTION	APPROXIMATE LENGTH 4" PIPE
30	8" X 4" Single Wye	1	2	3	3+79.40	6' 10'
31	8" X 4" Saddle Tee	13	4	3A	1+22	6' 10'

NOTE: Vertical Riser Pipe shall be extended to 2' minimum above ground water elevation and 4' maximum below proposed ground elevation.



PROJECT NUMBER: 468-84480
DATE: Jan. 23, 2008
DRAWN BY: ALEX
CHECKED BY: EJB

PROJECT NAME: CAMBRIA ADDITION SANITARY SEWER WICHITA, KANSAS
SHEET: 7 OF 18

PROJECT NUMBER: 468-84480
DATE: Jan. 23, 2008
DRAWN BY: ALEX
CHECKED BY: EJB