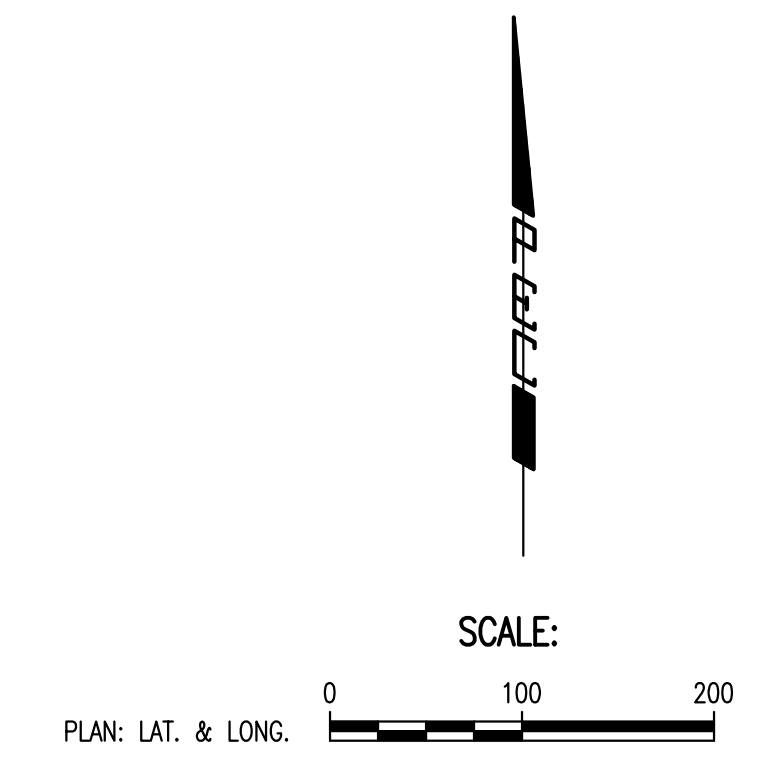
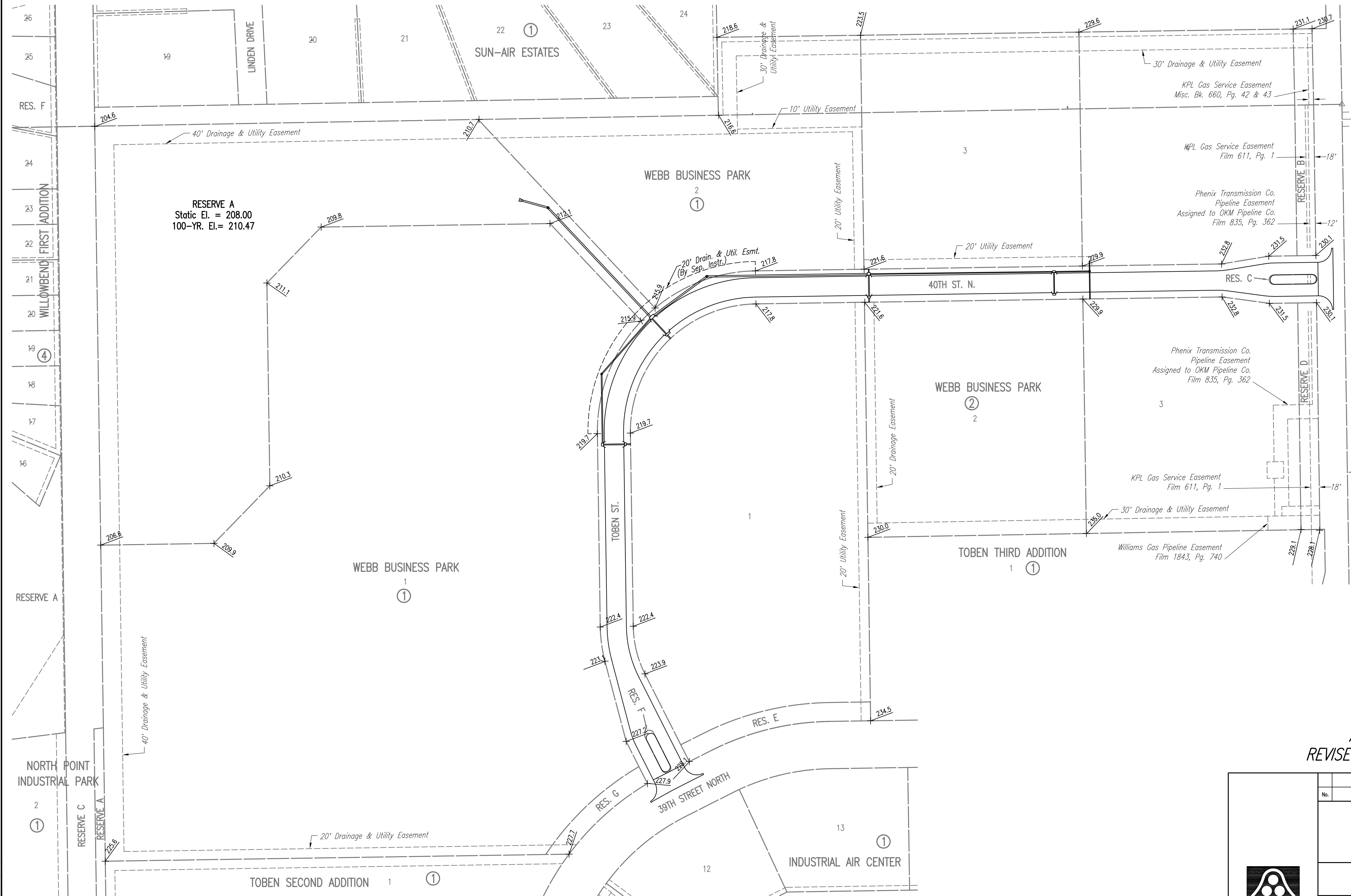


# WEBB BUSINESS PARK

AN ADDITION TO WICHITA, SEDGWICK COUNTY, KANSAS



Saved: 04-12-2008 9:45:50 AM by BJS  
 Plot Scale: 1:100 04-14-2008 7:38:27 AM  
 G:\2007\07593\000\07593-000-C-4-CORNER PLAN

AUGUST 17, 2007  
 REVISED: NOVEMBER 30, 2007

No.	Revision	By	Date
WEBB BUSINESS PARK PAVING AND INCIDENTAL DRAINAGE IMPROVEMENTS <b>4-CORNER PLAN</b> JAMES L. ARMOUR, P.E. - CITY ENGINEER CITY OF WICHITA PROJECT NO. 472-84611 <b>Professional Engineering Consultants, P.A.</b> 303 S. TOPEKA • WICHITA, KANSAS 67202 316-262-2691 • FAX 316-262-3003			
Designed by	BMM	Job No.	35-07593-000
Drawn by	BJS, TAT	Date	June 2007
			Sheet 6 of 46