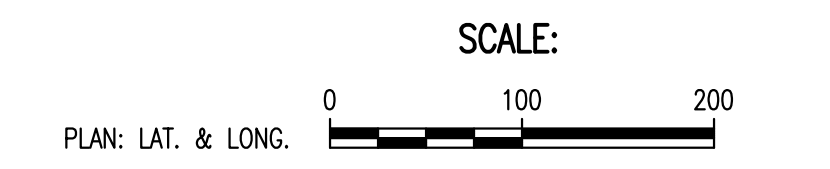
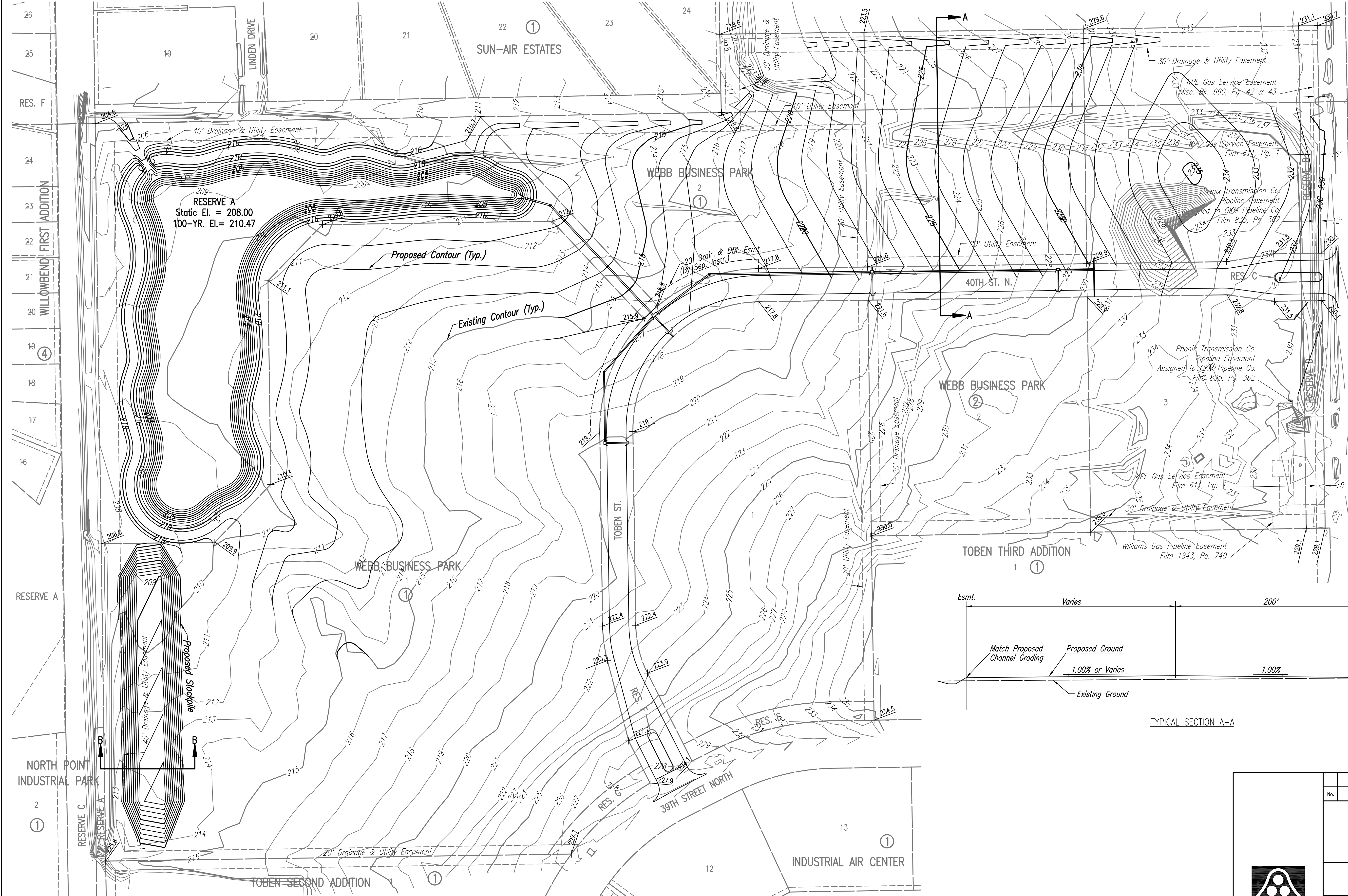
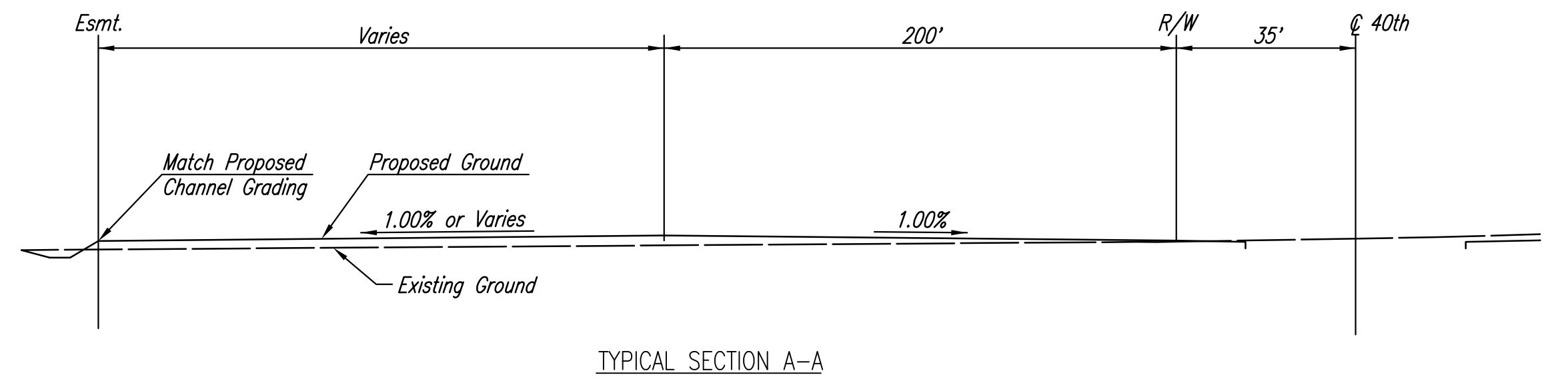
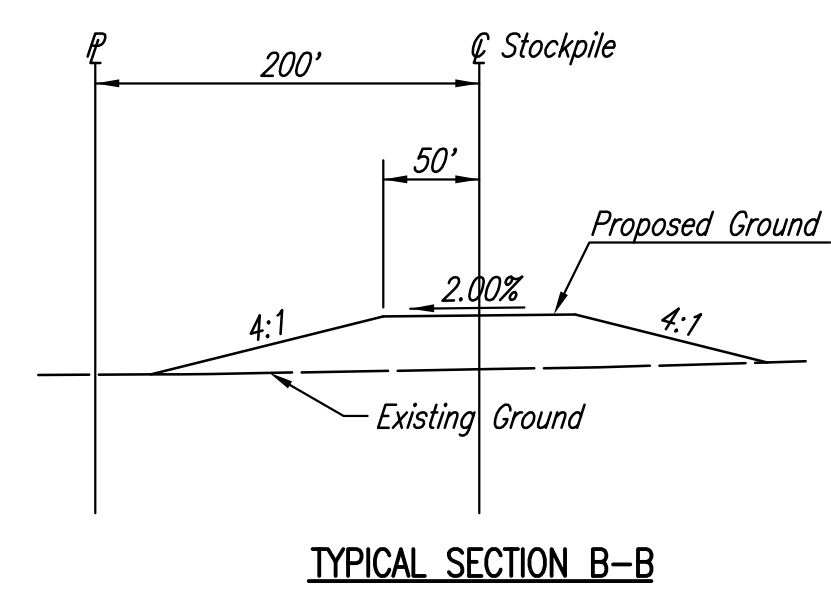


WEBB BUSINESS PARK

AN ADDITION TO WICHITA, SEDGWICK COUNTY, KANSAS



- LEGEND**
- SPOT ELEVATION (DIRT GRADE)
 - HIGH POINT ELEVATION
 - MATCH EXISTING ELEVATION
 - PROPOSED CONTOUR
 - EXISTING CONTOUR
 - CONTOUR INTERVAL: 1 FOOT



Scaled 04-14-2008 7:47:42 AM by BJS
 Plot Scale 1:100 04-14-2008 7:48:20 AM
 Q:\2007\07593\000\07593-000-C-SITE GRADING PLAN

No.	Revision	By	Date
WEBB BUSINESS PARK PAVING AND INCIDENTAL DRAINAGE IMPROVEMENTS SITE GRADING PLAN (FOR INFORMATION ONLY) JAMES L. ARMOUR, P.E. - CITY ENGINEER CITY OF WICHITA PROJECT NO. 472-84611 Professional Engineering Consultants, P.A. 303 S. TOPEKA • WICHITA, KANSAS 67202 316-262-2691 • FAX 316-262-3003			
Designed by	BMM	Job No.	35-07593-000
Drawn by	BJS, TAT	Date	June 2007
			Sheet 7 of 46