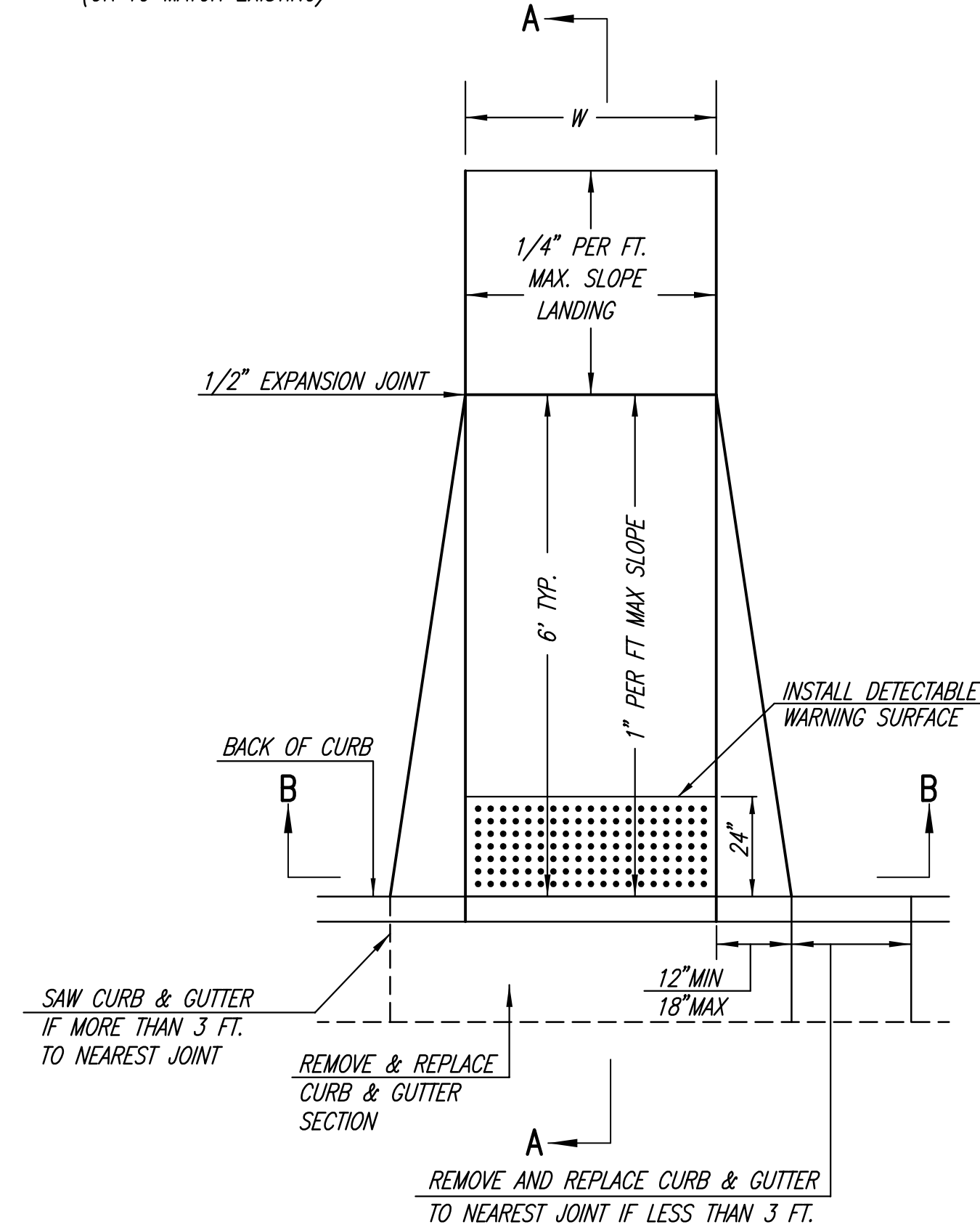
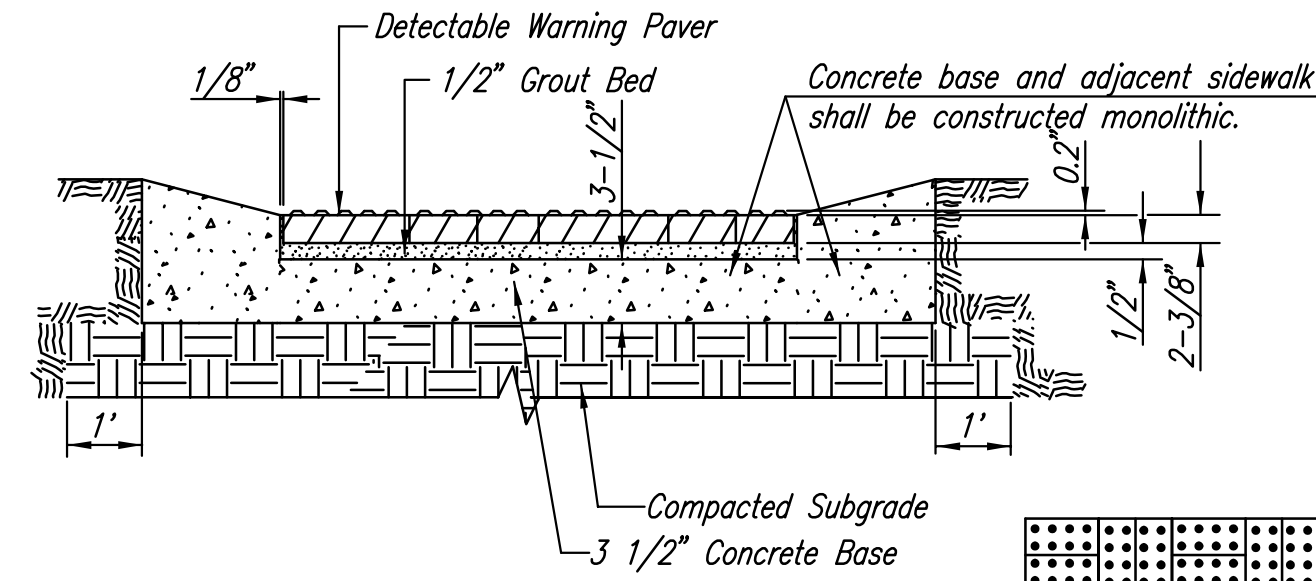


W= 4'0" FOR STANDARD RAMP  
 W= 5'0" FOR RAMPS AT SCHOOL CROSSWALKS  
 (OR TO MATCH EXISTING)



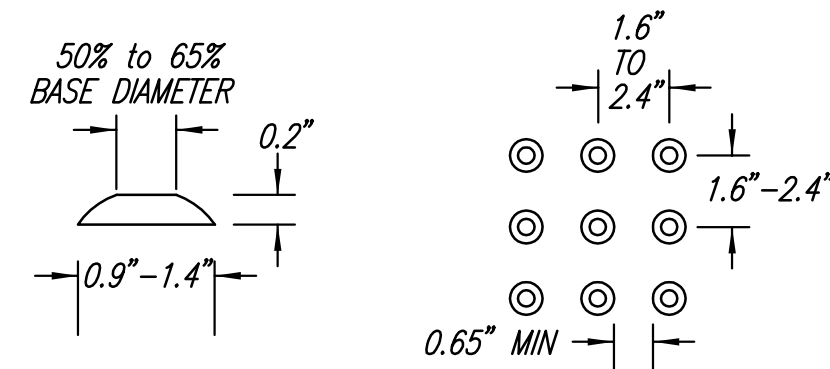
(TYPE A)  
 STANDARD WHEELCHAIR RAMP  
 WITH DETECTABLE WARNING  
 CONSTRUCTION DETAIL FOR STREETS  
 WITH COMBINED CURB & GUTTER



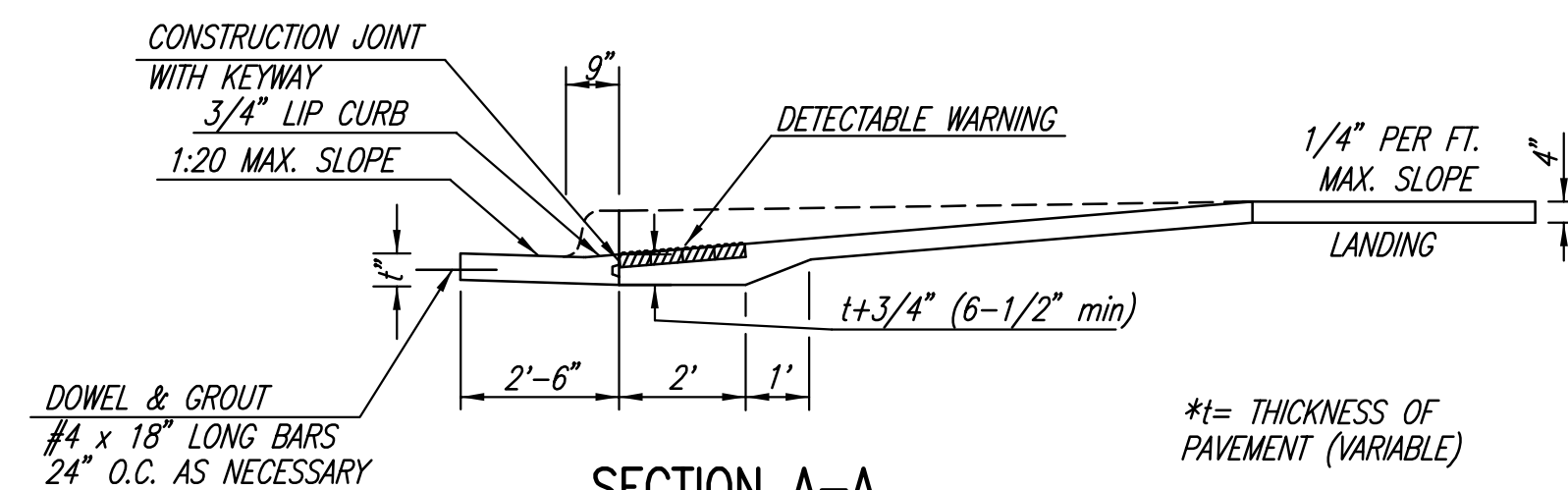
TYPICAL SECTION DETECTABLE WARNING PAVER

NOTE: RAMPS TO COMPLY WITH LATEST ADAAG GUIDELINES.  
 PAVESTONE DETECTABLE WARNING PAVERS (OR AN APPROVED EQUAL) SHALL  
 BE USED IN ALL WHEELCHAIR RAMPS. THE RED PAVER SHALL BE INSTALLED USING  
 A BASKET WEAVE/PARQUET PATTERN. OTHER PATTERNS MAY BE USED WITH APPROVAL OF  
 ENGINEER. SAND FILL JOINTS. ALIGN DOMES IN THE DIRECTION OF PEDESTRIAN TRAVEL.

SECTION B-B



DOMES DETAIL

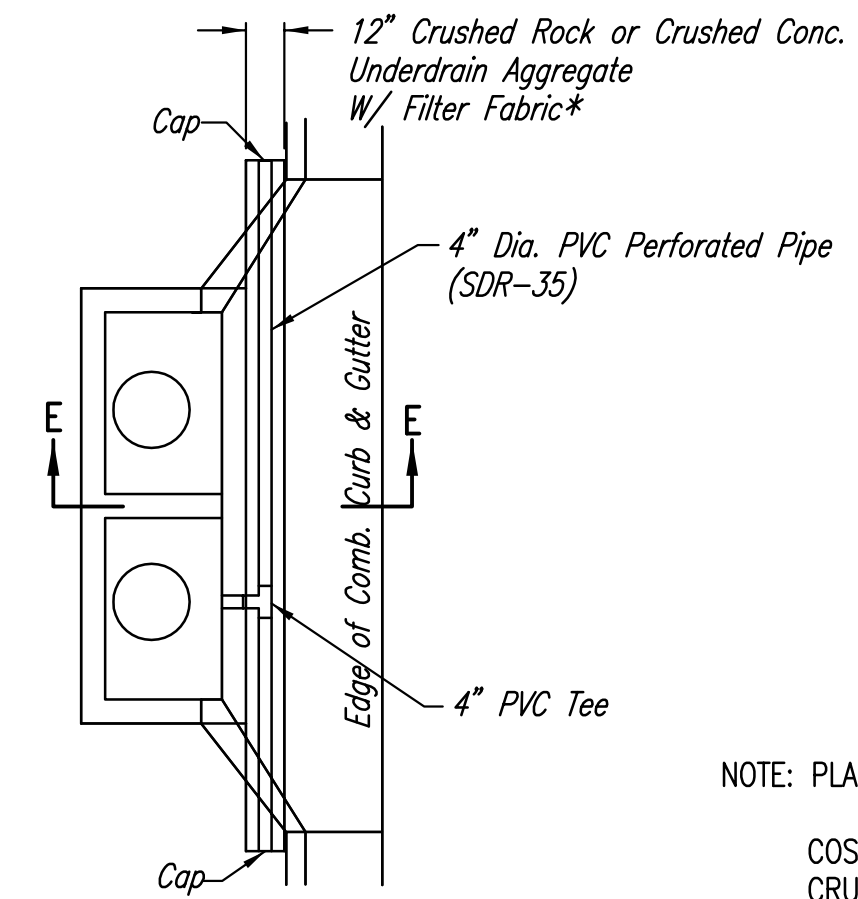


SECTION A-A

TYPICAL WHEELCHAIR RAMP DETAILS

\*t= THICKNESS OF  
 PAVEMENT (VARIABLE)

AUGUST 4, 2003



PLAN

\* UNDERDRAIN AGGREGATE  
 PERCENT OF AGGREGATE RETAINED

1"	0
3/4"	0-10
3/8"	45-80
#4	90-100
#8	95-100

ROCK QUALITY SHALL CONFORM TO THE REQUIREMENTS  
 SPECIFIED BY THE KDOT 1990 EDITION STANDARD  
 SPECIFICATION SUBSECTION 1102 FOR DURABILITY  
 CLASS I.

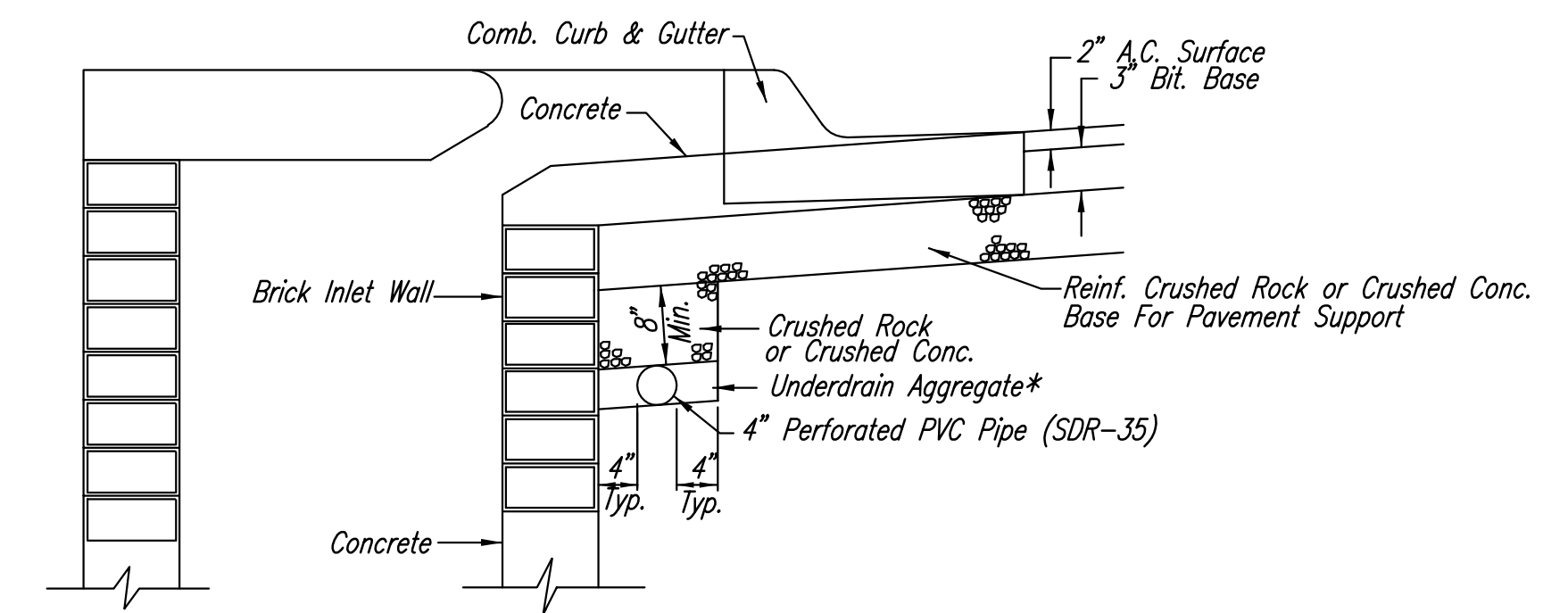
PAVEMENT UNDERDRAIN LOCATIONS

STREET	STATION	SIDE
40TH STREET NORTH	20+44.23	LT. & RT.

NOTE: PLACE 4" PVC PERFORATED PIPE AT ALL DRAINAGE SUMP LOCATIONS.

COST OF UNDERDRAIN SYSTEM TO BE INCIDENTAL TO THE REINFORCED  
 CRUSHED ROCK OR REINFORCED CRUSHED CONCRETE BASE.

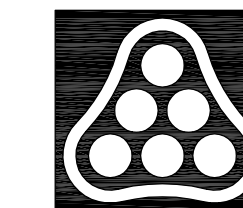
INLET TYPE MAY VARY FROM THAT SHOWN.



SECTION E-E

PAVEMENT UNDERDRAIN DETAIL

Min. 16 Perforations Per Lin. Ft. @ 1/4" Dia.  
 Perforations To Be on Bottom Half



No.	Revision	By	Date
WEBB BUSINESS PARK PAVING AND INCIDENTAL DRAINAGE IMPROVEMENTS <b>MISCELLANEOUS PAVING DETAILS</b> JAMES L. ARMOUR, P.E. - CITY ENGINEER CITY OF WICHITA PROJECT NO. 472-84611 <b>Professional Engineering Consultants, P.A.</b> 303 S. TOPEKA • WICHITA, KANSAS 67202 316-262-2691 • FAX 316-262-3003			
Designed by	BMM	Job No.	35-07593-000
Drawn by	BJS, TAT	Date	June 2007
			Sheet 14 of 46