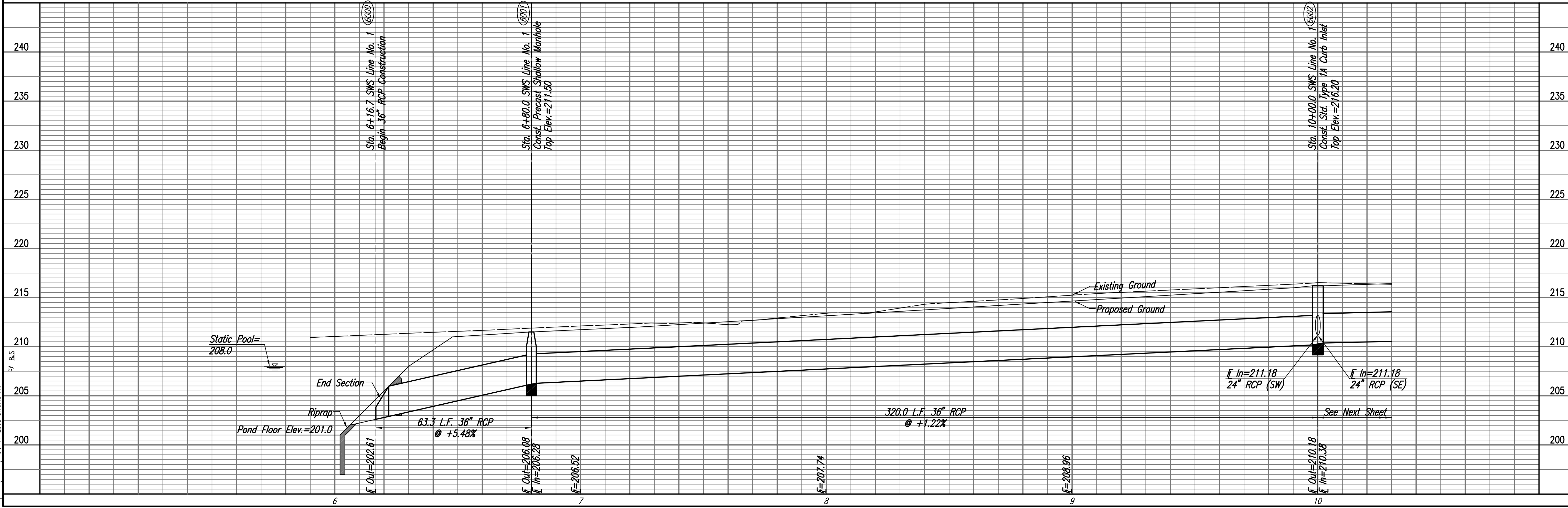


| | | | |
|------|---------|----|------|
| PLAN | CHECKED | BY | DATE |
| | CHECKED | | |

| | | | |
|---------|---------|----|------|
| PROFILE | CHECKED | BY | DATE |
| | CHECKED | | |

Saved: 04-12-2008 10:30:20 AM by BUS
 Plot Scale
 04/2007 075549000A01842000 8065WSJAME 1-1



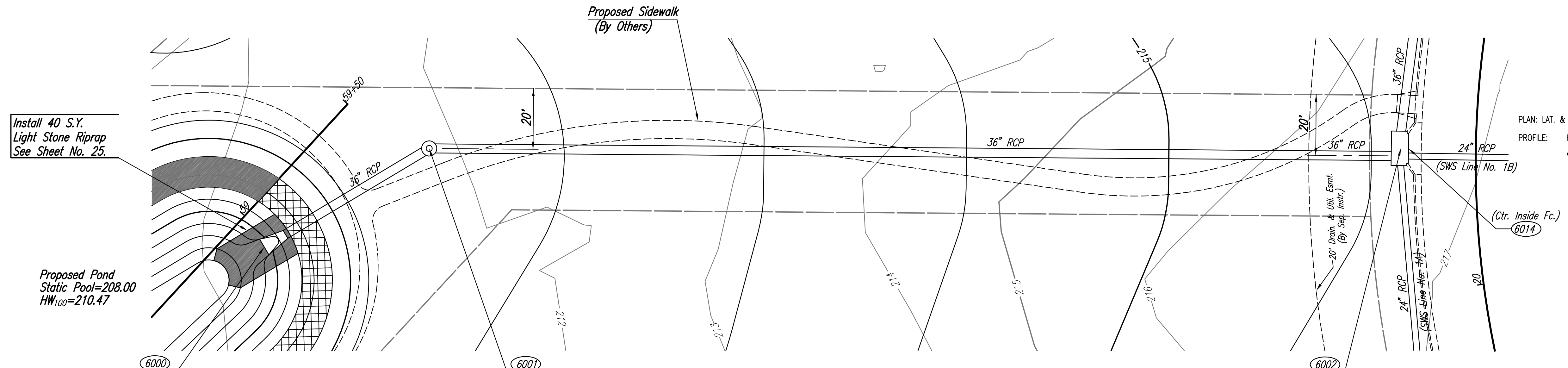
Install 40 S.Y.
 Light Stone Riprap
 See Sheet No. 25.

Proposed Pond
 Static Pool=208.00
 HW₁₀₀=210.47

Sta. 6+16.7 SWS Line No. 1
 Begin 36" RCP Construction
 Install 63.3 L.F. 36" RCP (SE)
 (Including End Section)

Sta. 6+80.0 SWS Line No. 1
 Const. Precast Shallow Manhole
 Dia.=5'-0"
 Top Elev.=211.50
 Install 320.0 L.F. 36" RCP (E)
 See Sheet No. 23.

Sta. 10+00.0 SWS Line No. 1=
 Sta. 25+00.0 SWS Line No. 1A=
 Sta. 30+00.0 SWS Line No. 1B=
 @ 40th St. N. Sta. 20+44.23, 24.67' Lt.
 Std. Type 1A Curb Inlet
 L=10'-0", W=5'-0"
 Top Elev.=216.20



SCALE:
 0 20 40 5

PLAN: LAT. & LONG.
 PROFILE: HORIZ. SAME AS ABOVE
 VERT. ↓

| COORDINATE LIST | | |
|-----------------|------------|------------|
| POINT | NORTH | EAST |
| 6000 | 9,797.3019 | 8,256.4216 |
| 6001 | 9,780.3850 | 8,317.3976 |
| 6002 | 9,548.7525 | 8,538.1832 |
| 6014 | 9,546.9163 | 8,539.8800 |

6000 = COORDINATE POINT NO.
 SEE SHEET NO. 3 FOR PLAT COORDINATES